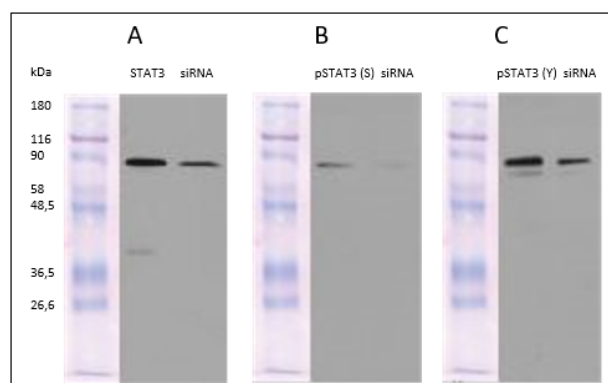


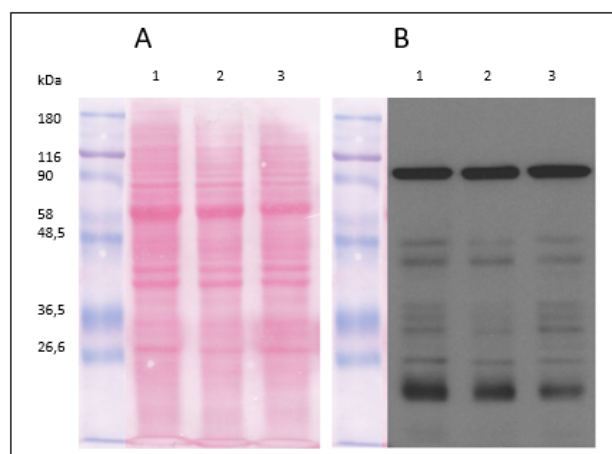
# Supplementary Information for: The Circadian Rhythms of STAT3 in the Rat Pineal Gland and Its Involvement in Arylalkylamine-N-acetyltransferase Regulation

Simona Moravcová, Eva Filipovská, Veronika Spišská, Irena Svobodová, Jiří Novotný, Zdeňka Bendová\*

\*Zdeňka Bendová (zdenka.bendova@natur.cuni.cz)



**Figure S1.** The original western blots of STAT3 (A) and its phosphorylated forms (B, C) after transfection of pinealocytes with *Stat3* siRNA.



**Figure S2.** The original western blot of TLR4 receptor in three randomly selected pinealocytes cultures. Protein transferred to nitrocellulose membrane were first stained with Ponceau S (A) and then TLR4 was detected with specific antibodies (B).