

Effect of grinding on tremolite-asbestos and anthophyllite-asbestos

Andrea Bloise ^{1*}, Robert Kusiorowski² and Alessandro F. Gualtieri³.

¹Department of Biology, Ecology and Earth Sciences, University of Calabria, I-87036 Arcavacata di Rende, CS, Italy

²Institute of Ceramics and Building Materials, Refractory Materials Division in Gliwice, ul. Toszecka 99, 44-100 Gliwice, Poland

³Department of Chemical and Geological Sciences. University of Modena and Reggio Emilia, I-41125 Modena, Italy;

* Correspondence: andrea.bloise@unical.it; Tel.: +39 0984 493588

This file includes the supporting information of the paper entitled: “Effect of grinding on tremolite-asbestos and anthophyllite-asbestos”.

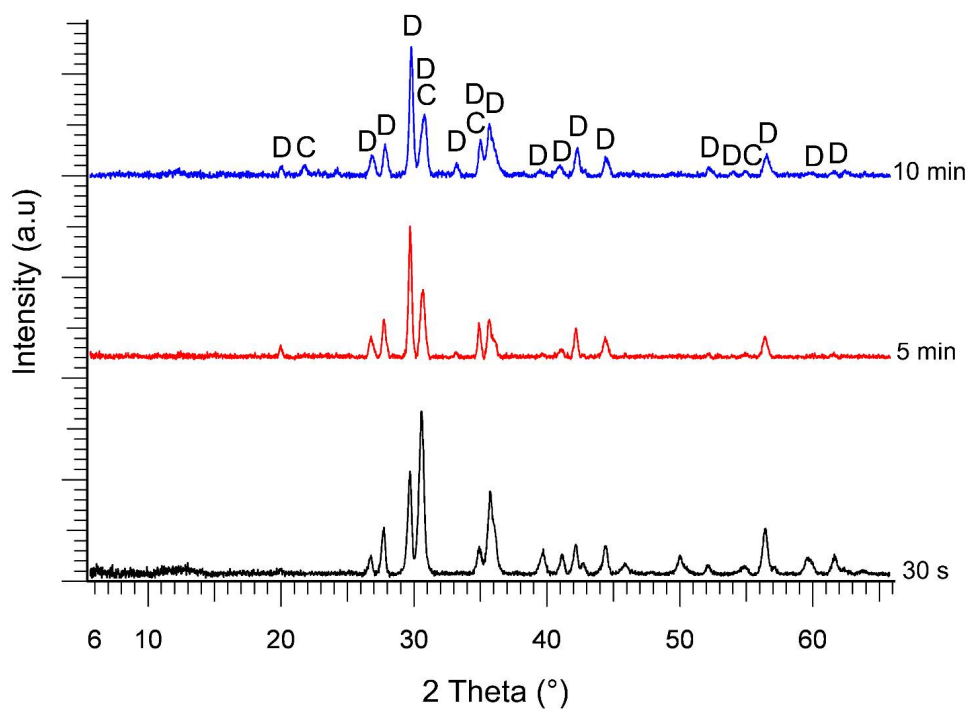


Figure S1. XRPD patterns after the heating at 1100 °C of tremolite asbestos ground for 30s, 5 and 10 min. Newly formed phases: D = diopside, C = cristobalite.

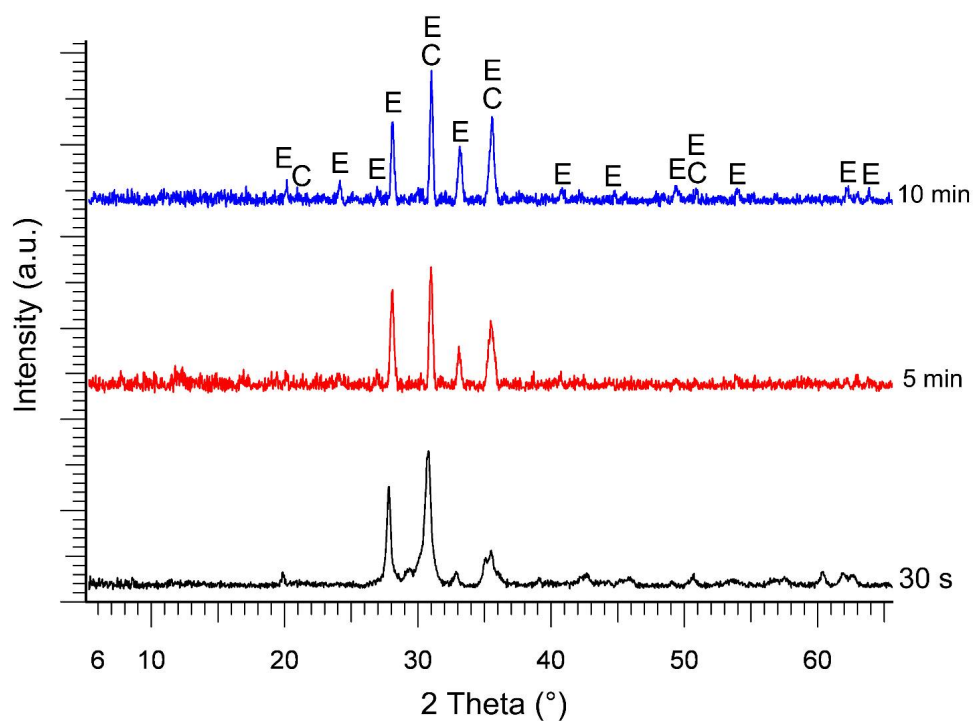


Figure S2. XRPD patterns after the heating at 1100 °C of anthophyllite asbestos ground for 30s, 5 and 10 min. Newly formed phases: E = enstatite, C = cristobalite.