

Supplementary Materials: Interplay of Multiple Sediment Routing Systems Revealed by Combined Sandstone Petrography and Heavy Mineral Analysis (HMA) in the South Pyrenean Foreland Basin

Xavier Coll, Marta Roigé, David Gómez-Gras*, Antonio Teixell, Salvador Boya and Narcís Mestres

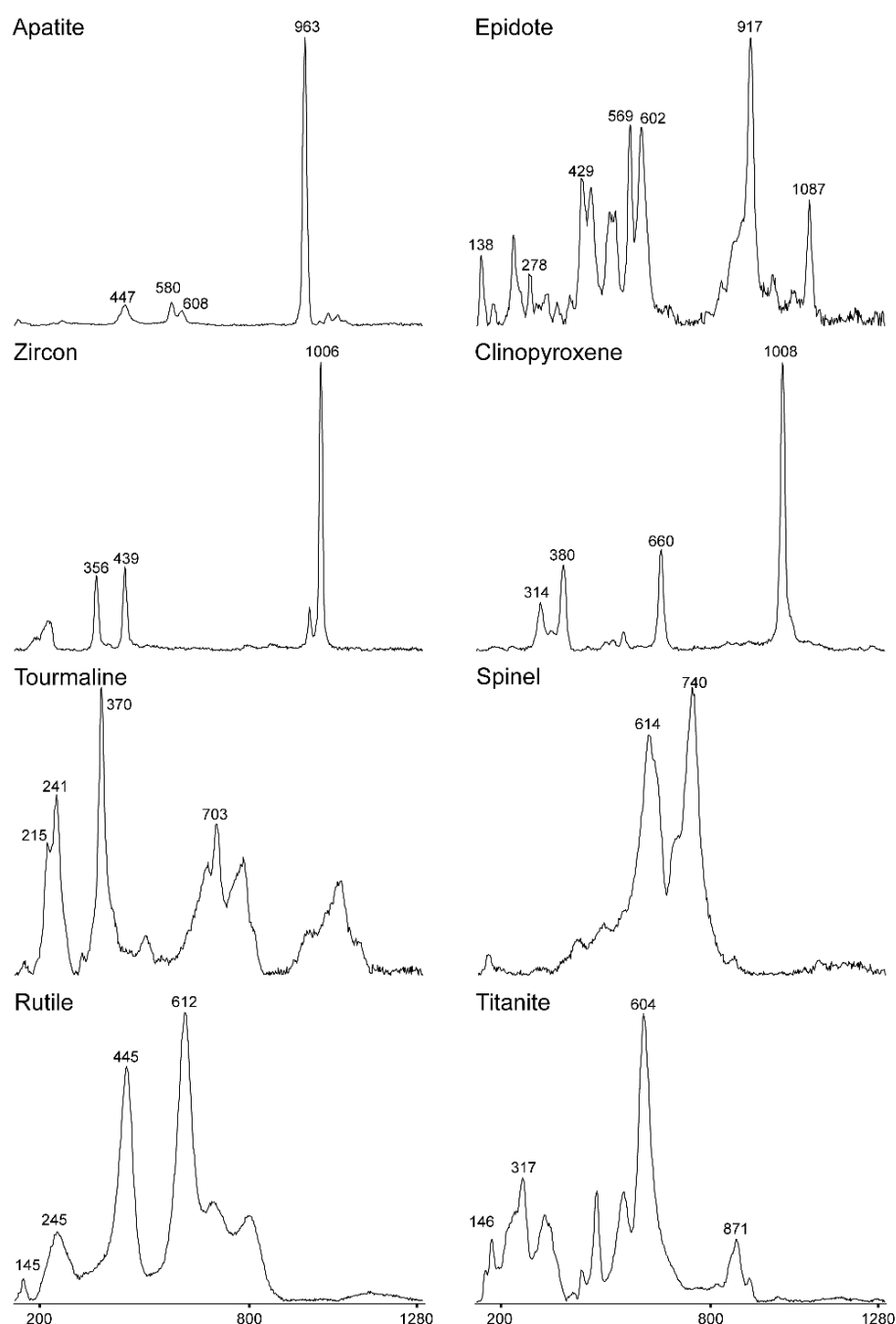


Figure S1. Representative Raman spectra of heavy minerals from the late Eocene–Miocene Jaca basin (1).

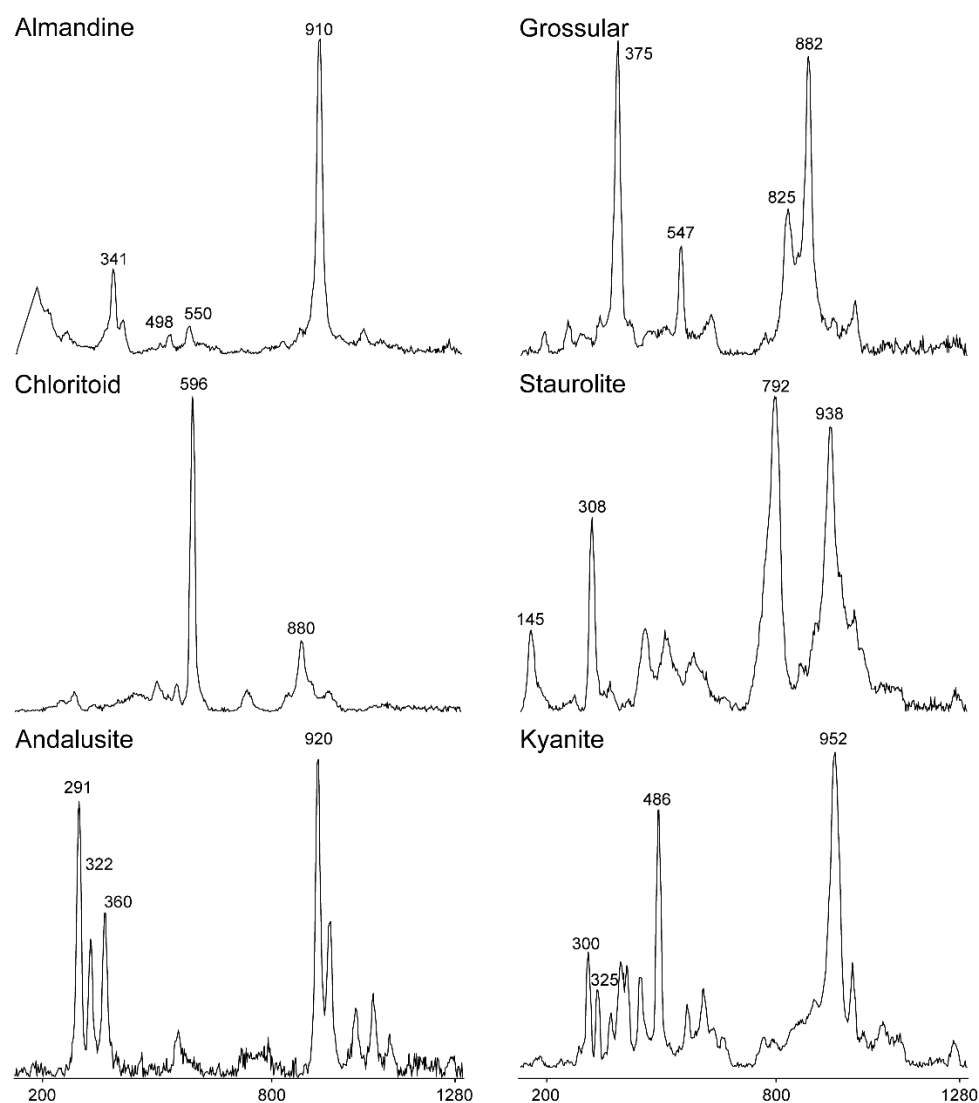


Figure S2. Representative Raman spectra of heavy minerals from the late Eocene–Miocene Jaca basin (2).

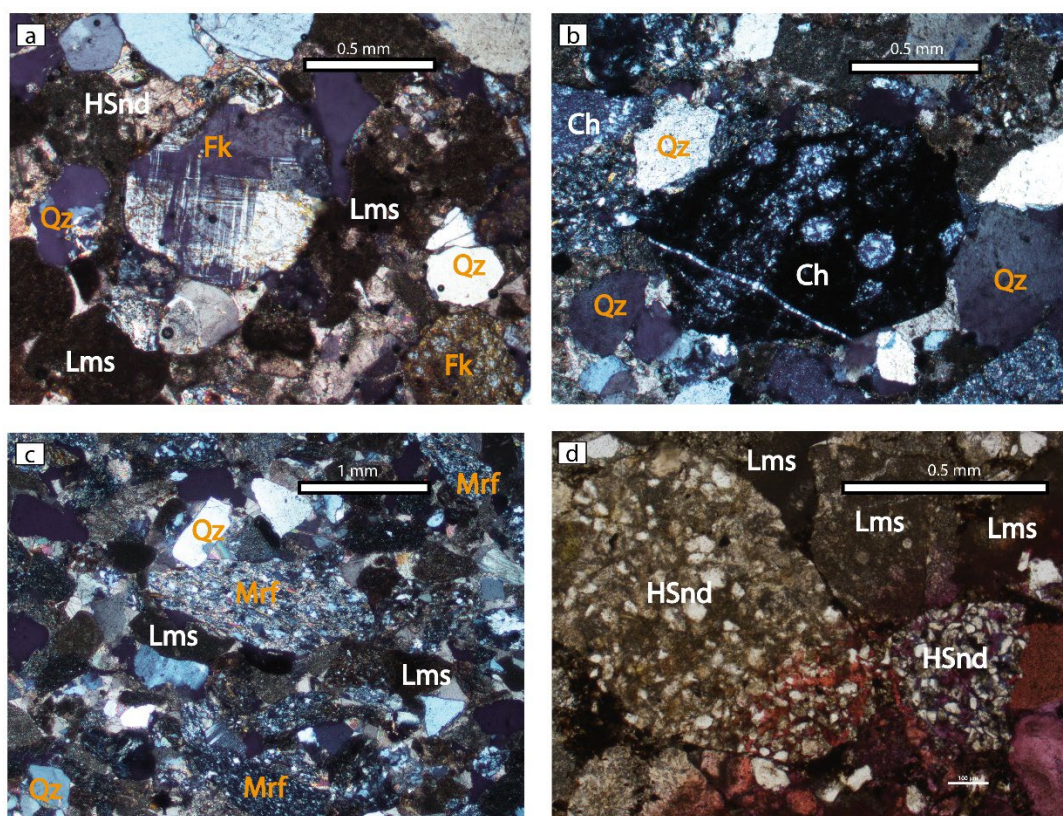


Figure S3. Optical photomicrographs of distinct extrabasinal grains.

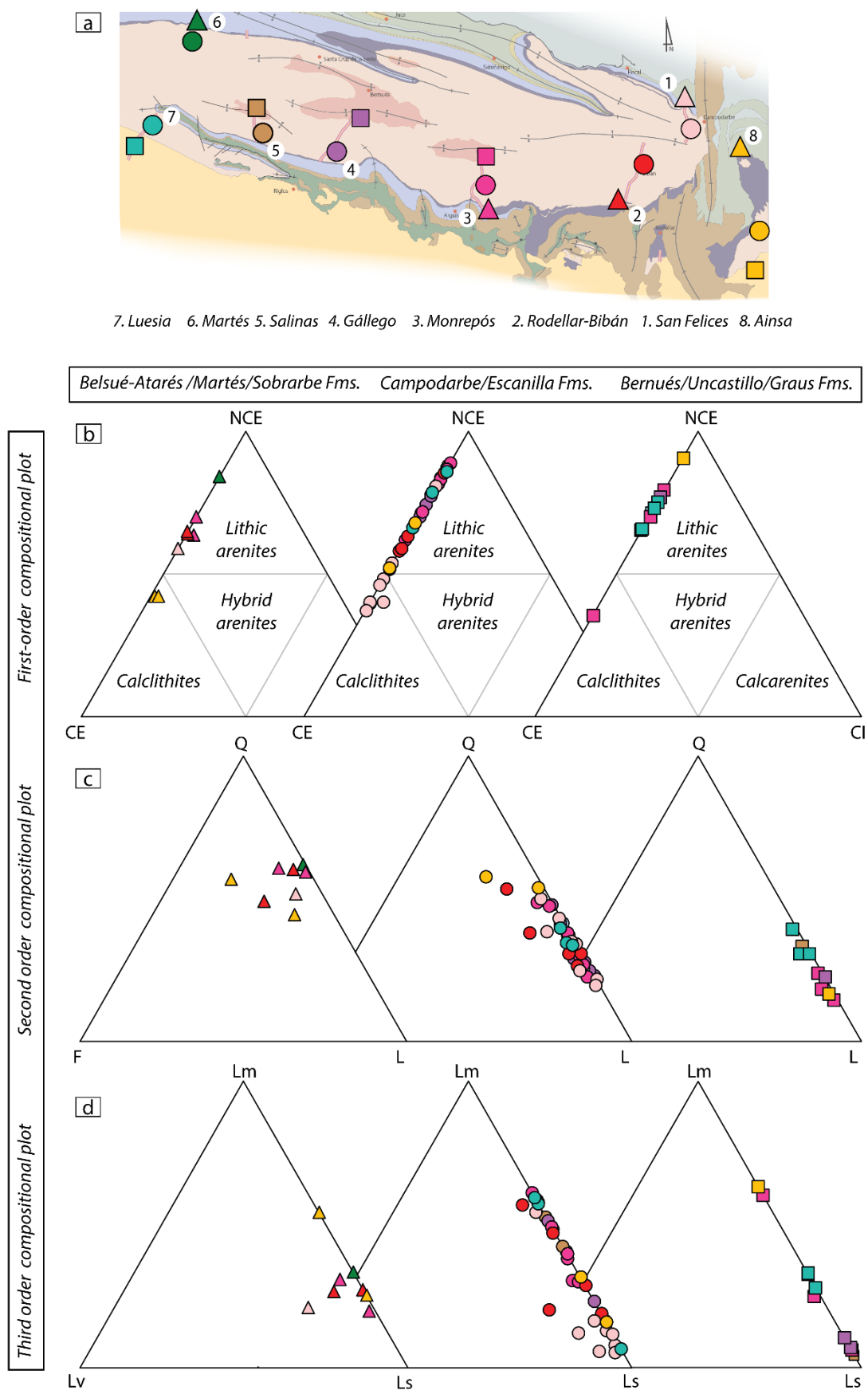


Figure S4. Compositional plots for all the analyzed samples.

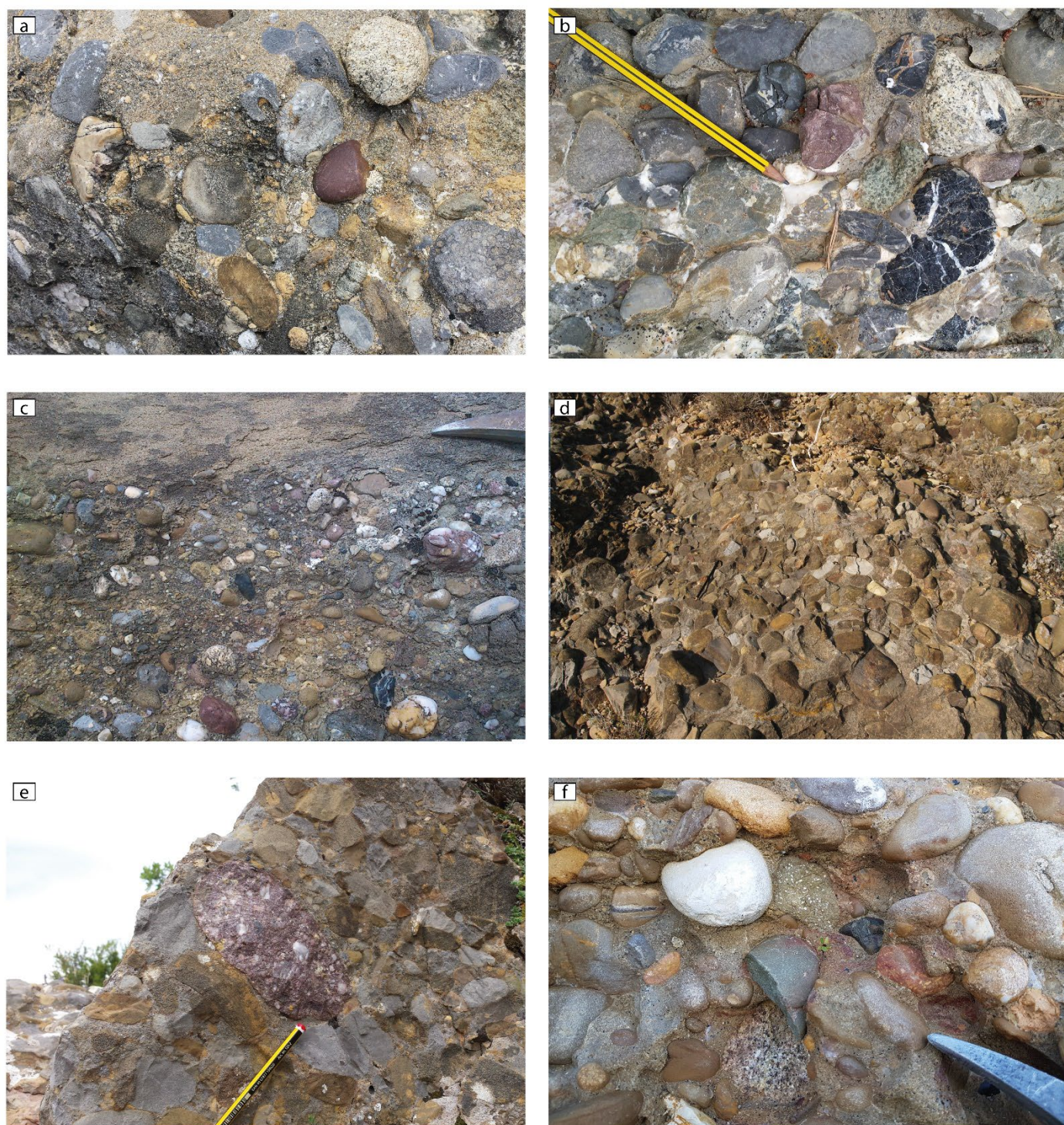


Figure S5. Images of the appearance of each of the described petrofacies in the conglomerate-sized deposits.

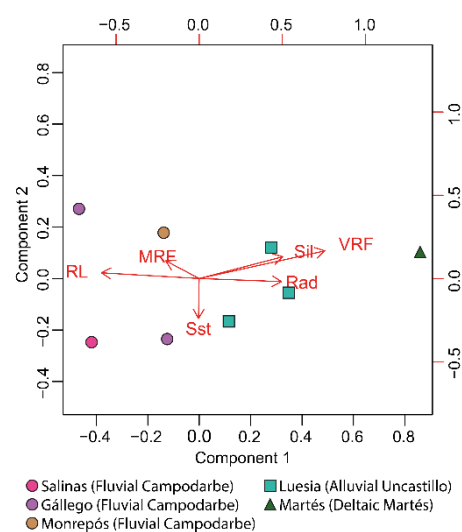


Figure S6. Biplot of the two sub-groups of the MLC petrofacies.

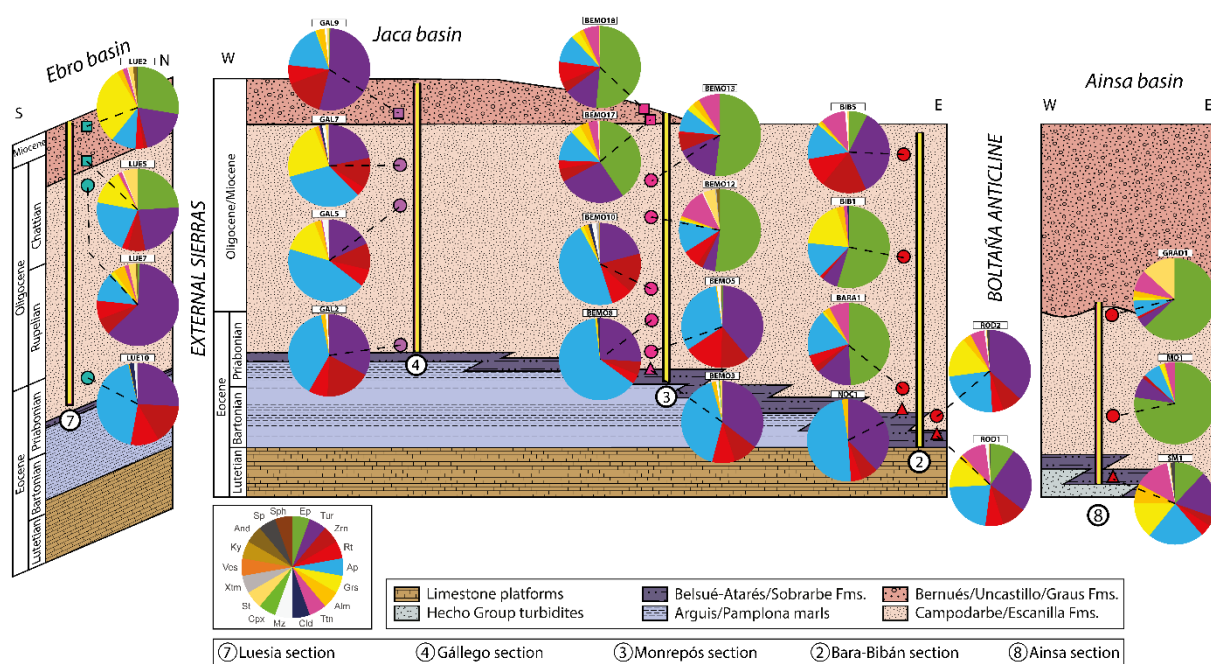


Figure S7. Heavy-mineral percentage pie charts for all the analyzed samples in a general stratigraphic cross-section sketch.