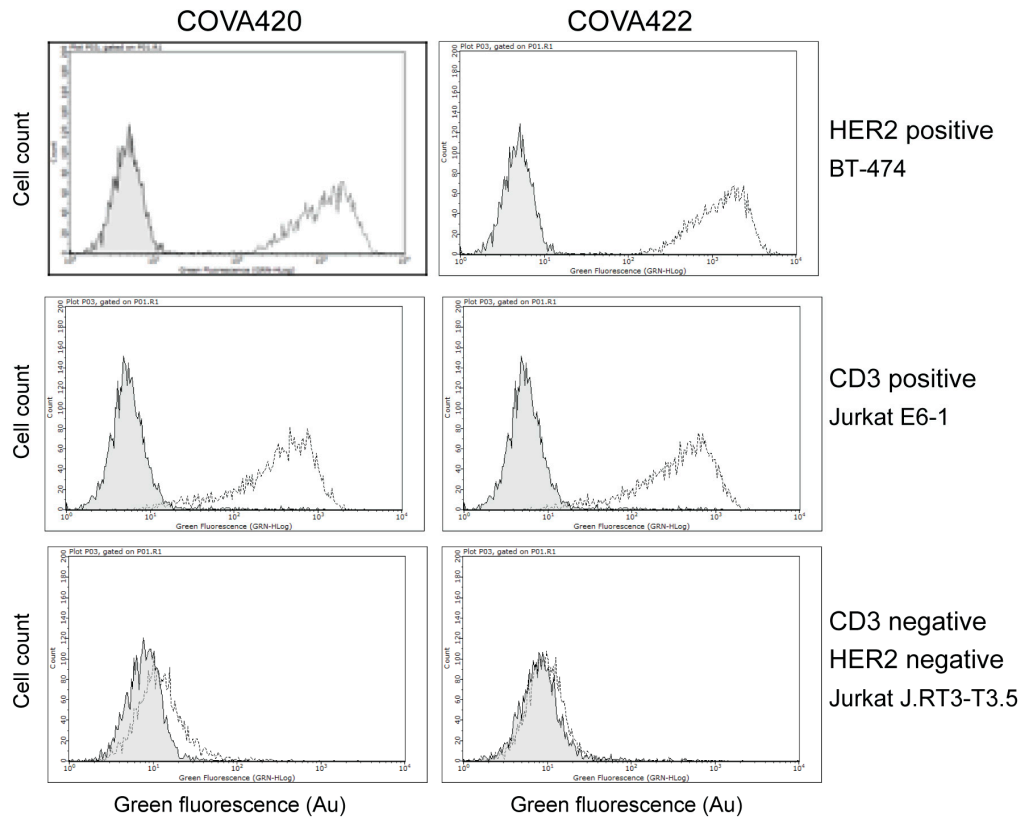
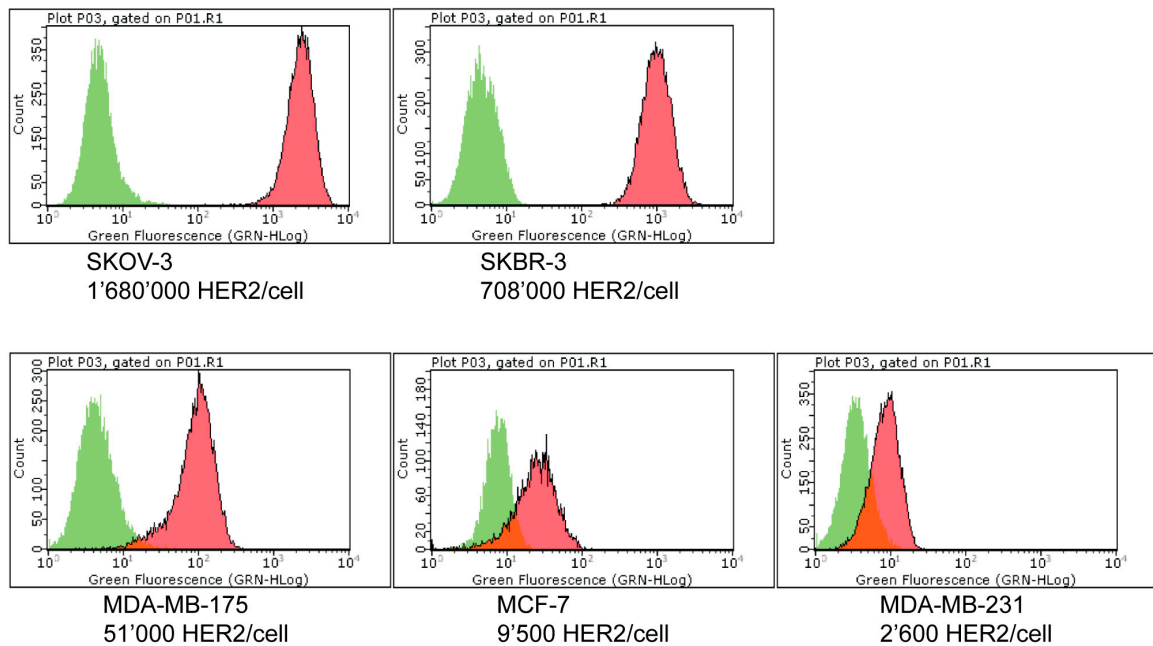


## Supplementary Materials



**Figure S1.** FACS histograms of COVA420 and COVA422 on HER2 and CD3 positive cells. Clear histograms represent the signal obtained with COVA420 (left column) or COVA422 (right column), dark filled histograms represent the isotype control stained samples.



**Figure S2.** HER2 expression levels were quantified via flow cytometry based on the commercially available QIFIKIT® reagents. The histograms represent anti-HER2 antibody-stained cells (red) and cells stained with secondary antibody only (green).