

Request for Questionnaire on "Study on Smart Zoos"

QR code information function

1. **Plants' QR code information ***

How often do you use the **Plants' QR code information** function?





Never use

1

2

3

4

5

Often use

2. **Plants' QR code information ***

How important do you think the **Plants' QR code information** is to the development of the smart zoo?

No need

1

2

3

4

5

Very important

3. Animals' QR code information *

How often do you use the **Animals' QR code information** function?





Never use

1

2

3

4

5

Often use

4. **Animals' QR code information ***

How important do you think the **Animals' QR code information** is to the development of the smart zoo?

No need

1

2

3

4

5

Very important

5. Media Reports' QR code information *

How often do you use the Media Reports' QR code information function?



Never use

1

☐

2

☐

3

☐

4

☐

5

☐

Often use

6. **Media Reports' QR code information ***

How important do you think the **Media Reports' QR code information** is to the development of the smart zoo?

No need

1

2

3

4

5

Very important

7. Questionnaire Research QR code information *

How often do you use the Questionnaire Research QR code information function?



Never use

1

2

3

4

5

Often use

8. **Questionnaire Research QR code information ***

How important do you think the **Questionnaire Research QR code information** is to the development of the smart zoo?

No need

1

2

3

4

5

Very important

9. **Artworks’ QR code information ***

How often do you use the **Artworks’ QR code information** function?



Never use

1

2

3

4

5

Often use

10. **Artworks' QR code information ***

How important do you think the **Artworks' QR code information** is to the development of the smart zoo?

No need

1

2

3

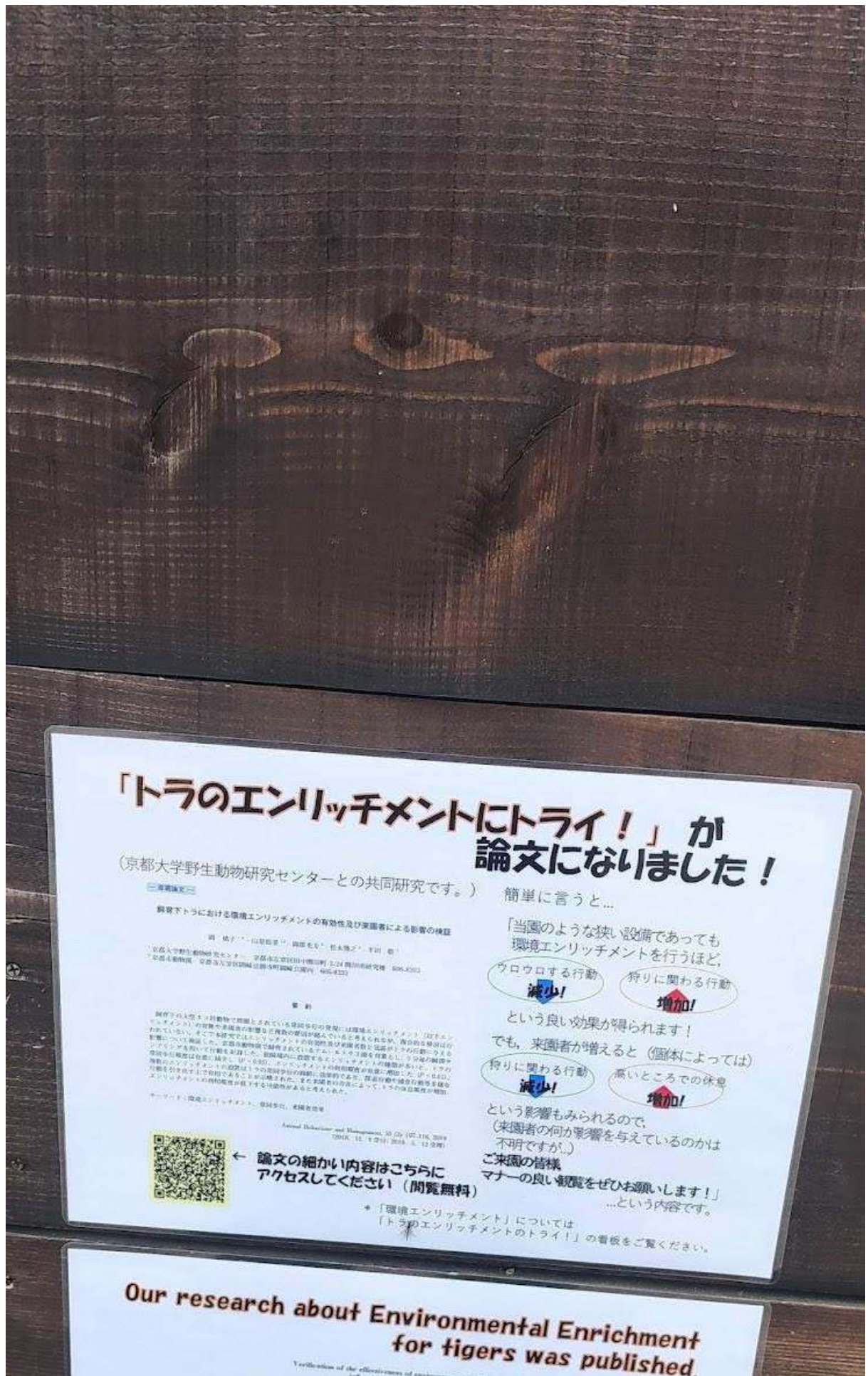
4

5

Very important

11. Academic Research QR code information *

How often do you use the Academic Research QR code information function?





Never use

1

☐

2

☐

3

☐

4

☐

5

☐

Often use

12. Academic Research QR code information *

How important do you think the Academic Research QR code information is to the development of the smart zoo?

No need

1

2

3

4

5

Very important

13. Events' QR code information *

How often do you use the Events' QR code information function?



Never use

☐

☐

☐

☐

☐

Often use

14. **Events’ QR code information ***

How important do you think the **Events’ QR code information** is to the development of the smart zoo?

No need

1

2

3

4

5

Very important

15. **Animal Education Science Videos QR code information ***

How often do you use the **Animal Education Science Videos QR code information** function?



Never use

Diagram illustrating five rows (1 to 5) with a horizontal line above and below each row, and a rounded rectangle in the center of each row.

Often use

16. **Animal Education Science Videos QR code information ***
How important do you think the **Animal Education Science Videos QR code information** is to the development of the smart zoo?

No need

1

2

3

4

5

Very important

17. Regional activities' QR code information *

How often do you use the Regional activities' QR code information function?



Never use

Often use

18. **Regional activities' QR code information ***

How important do you think the **Regional activities' QR code information** is to the development of the smart zoo?

No need

1

2

3

4

5

Very important

19. **Animal Education Science live QR code information ***How often do you use the **Animal Education Science live QR code information** function?

5. 少なくとも今後1年以上活動できる方
5. 自身でメーリングリストへの登録やアプリでの出欠登録等を行うことができる方

申込み・問合せ

1. 京都市動物園 (075-771-0210; 火～日曜日、9:00～17:00)
2. 参加を希望される方は、2023年2月25日(土)までに電話でお申し込みください。
3. 申込みの際に氏名、カナ、性別、年齢(高校生以下でないことの確認)、電話番号をお伝えください。
4. 多数のお申込みをいただいた場合、先着30名様とさせていただきます。
5. 他団体等でボランティア保険に加入済みの方は、当会活動でも使用可能か、予めご自身でご確認ください。
6. ボランティア保険に未加入の方は、当日当会を通じて保険に加入していただきます。
当日、保険代300円をお持ちください。支払方法は現金のみです。釣り銭のないようご注意ください。

動物園DEサイエンストーク
2023年3月5日(日)
13:30～14:30
レクチャールーム

Youtube Live 配信 

司会 わたなべ ちえ
(どうぶつたちの眠れない夜に)

動物園でサイエンスコミュニケーションをはじめよう!

—「ふれあい」をテーマに—
とざわ やまなし ゆみ
戸澤 あきつ、山梨 裕美
(帝京科学大学) (京都市動物園)

サイエンスコミュニケーションとは、科学のおもしろさや科学技術をめぐる課題を伝えて共に考えたり、科学をもとにしたコミュニケーションを通して社会の様々な課題を考えたりする活動です。社会課題に関して人々の間に共通理解をつくり、解決をはかるためにはますます重要だと考えられるようになっていきます。今回は、動物園の「ふれあい」を題材に、ワークショップ形式でサイエンスコミュニケーションにみんなでトライしてみたいと思います。

現在、京都市動物園では、動物のふれあいプログラムについて動物と人双方の視点から見直しを行っています。今回、過去5年の間にふれあいをめぐるヤギやテンジクネズミ、人を対象として実施した研究結果や動物園の取組をご紹介します。サイエンスコミュニケーションを通して、動物に関するさまざまな事柄を考える場を提供する「どうぶつたちの眠れない夜」のメンバーがコーディネートし、動物園と共同でヤギやテンジクネズミの研究を行っている帝京科学大学の研究者とともに動物の「ふれあい」について、参加者のみなさんとともに考えてみたいと思います。

イベントについては、動物園のウェブサイトやSNSから最新の情報をチェックしていただくようお願いいたします。
なお、当日の動物園の状況によっては、一部参加者を変更する場合がございます。
その場合は、あらかじめお知らせいたします。

参加される方は、動物園のウェブサイトやSNSから最新の情報をチェックしていただくようお願いいたします。
また、当日の動物園の状況によっては、一部参加者を変更する場合がございます。
その場合は、あらかじめお知らせいたします。

動物園のウェブサイトやSNSから最新の情報をチェックしていただくようお願いいたします。
また、当日の動物園の状況によっては、一部参加者を変更する場合がございます。
その場合は、あらかじめお知らせいたします。



Never use

1

2

3

4

5

Often use

20. **Animal Education Science live QR code information ***

How important do you think the **Animal Education Science live QR code information** is to the development of the smart zoo?

No need

1

2

3

4

5

Very important

21。 Animal protection organizations’ QR code information *

How often do you use the Animal protection organizations’ QR code information function?



Never use

1

2

3

4

5

Often use

22. **Animal protection organizations’ QR code information ***

How important do you think the **Animal protection organizations’ QR code information** is to the development of the smart zoo?

No need

1

2

3

4

5

Very important

Ecology System

23。

Ecological cycle systems *

How often do you use the Ecological cycle systems?



Never use

1

2

3

4

5

Often use

24. **Ecological cycle systems** *

How important do you think the **Ecological cycle systems** is to the development of the smart zoo.

No need

1

2

3

4

5

Very important

25. **Environmental sensors ***

How often do you use the **Environmental sensors** ?





Never use

1

2

3

4

5

Often use

26. **Environmental sensors** *

How important do you think the **Environmental sensors** is to the development of the smart zoo.

No need

1

2

3

4

5

Very important

27。 Automatic watering *

How often do you use the Automatic watering?



Never use

1 ☐

2 ☐

3 ☐

4 ☐

5 ☐

Often use

28. **Automatic watering** *

How important do you think the **Automatic watering** is to the development of the smart zoo.

No need

1

2

3

4

5

Very important

29. **Eco-energy (solar power) ***

How often do you use the **Eco-energy (solar power)**?





Never use

1

☐

2

☐

3

☐

4

☐

5

☐

Often use

30. **Eco-energy (solar power) ***

How important do you think the **Eco-energy (solar power)** is to the development of the smart zoo.

No need

1

2

3

4

5

Very important

31. Ecological energy use information *

How often do you use the Ecological energy use information?



Never use

Often use

32. **Ecological energy use information ***

How important do you think the **Ecological energy use information** is to the development of the smart zoo.

No need

1

2

3

4

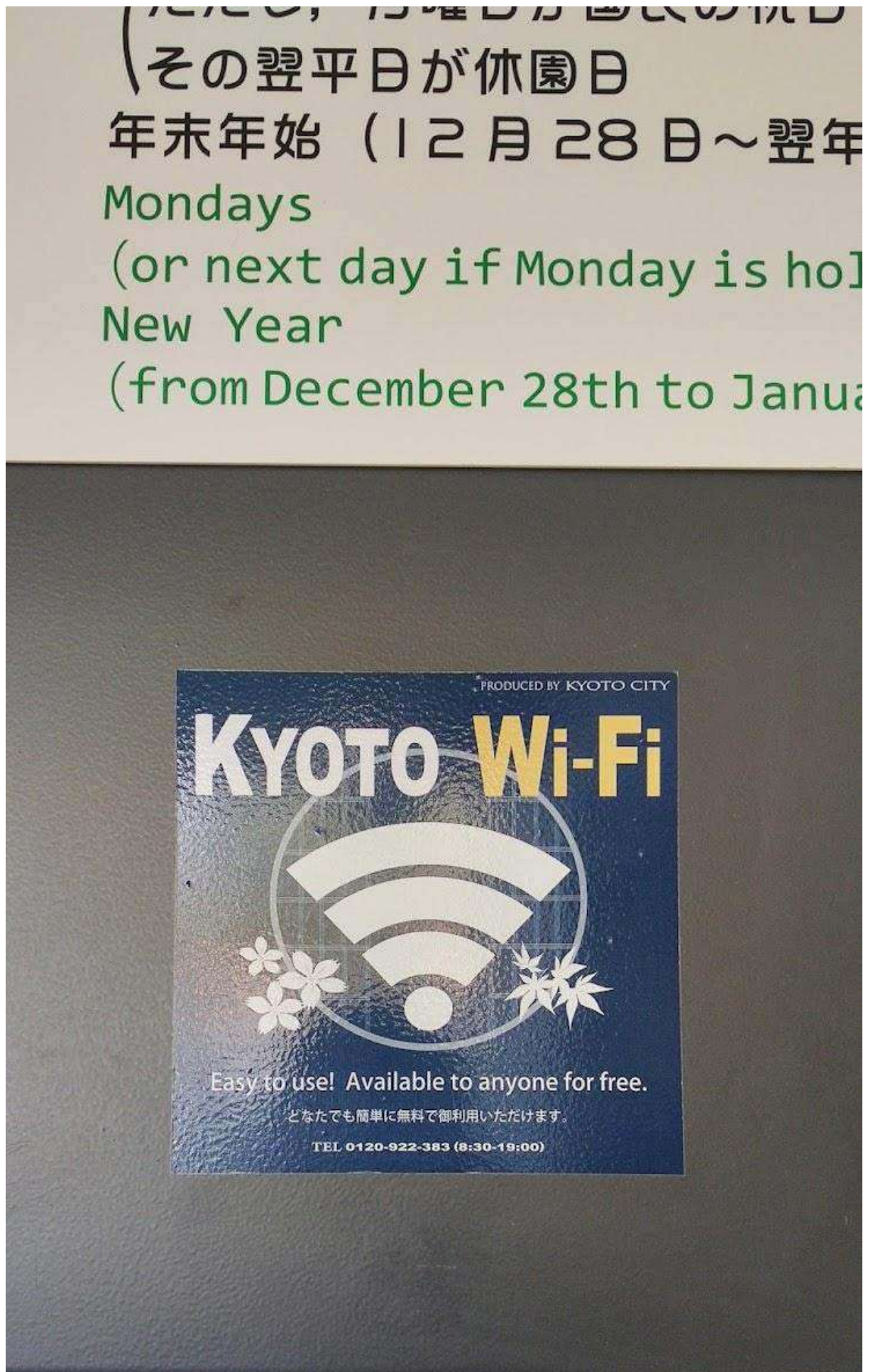
5

Very important

Functions within the zoo

33. **Free WIFI ***

How often do you use the Free WIFI?





Never use

1

2

3

4

5

Often use

34. **Free WIFI** *

How important do you think the Free WIFI is to the development of the smart zoo.

No need

1

2

3

4

5

Very important

35. Electronic ticket system *

How often do you use the Electronic ticket system?





Never use

1

2

3

4

5

Often use

36. **Electronic ticket system ***

How important do you think the **Electronic ticket system** is to the development of the smart zoo.

No need

1

2

3

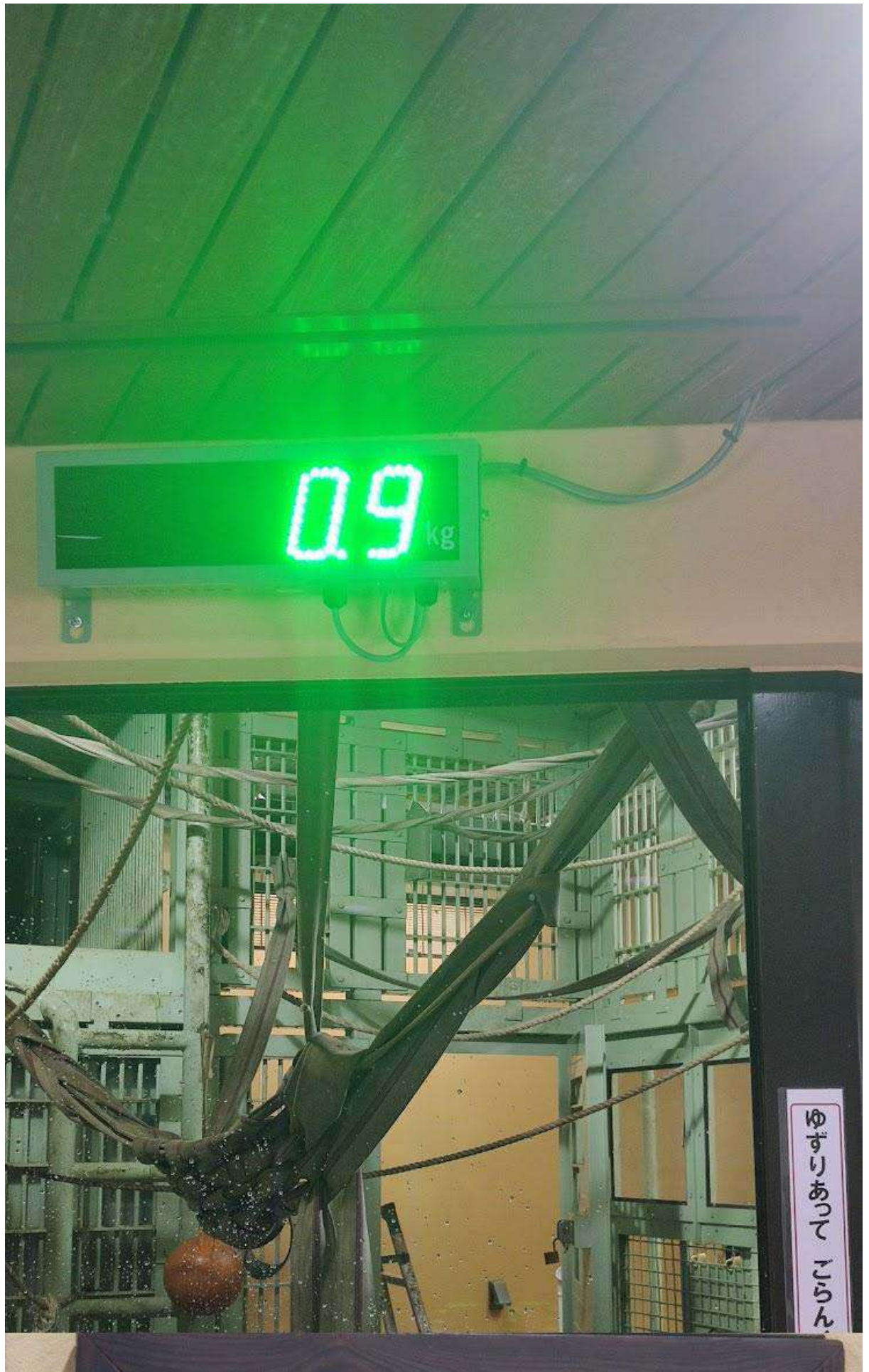
4

5

Very important

37. **Interactive animal education ***

How often do you use the **Interactive animal education**?





Never use

1

2

3

4

5

Often use

38. **Interactive animal education** *

How important do you think the **Interactive animal education** is to the development of the smart zoo.

No need

1

2

3

4

5

Very important

39。 **Animal state observation ***

How often do you use the Animal state observation?



Never use

1

☐

2

☐

3

☐

4

☐

5

☐

Often use

40. **Animal state observation ***

How important do you think the Animal state observation is to the development of the smart zoo.

No need

1

2

3

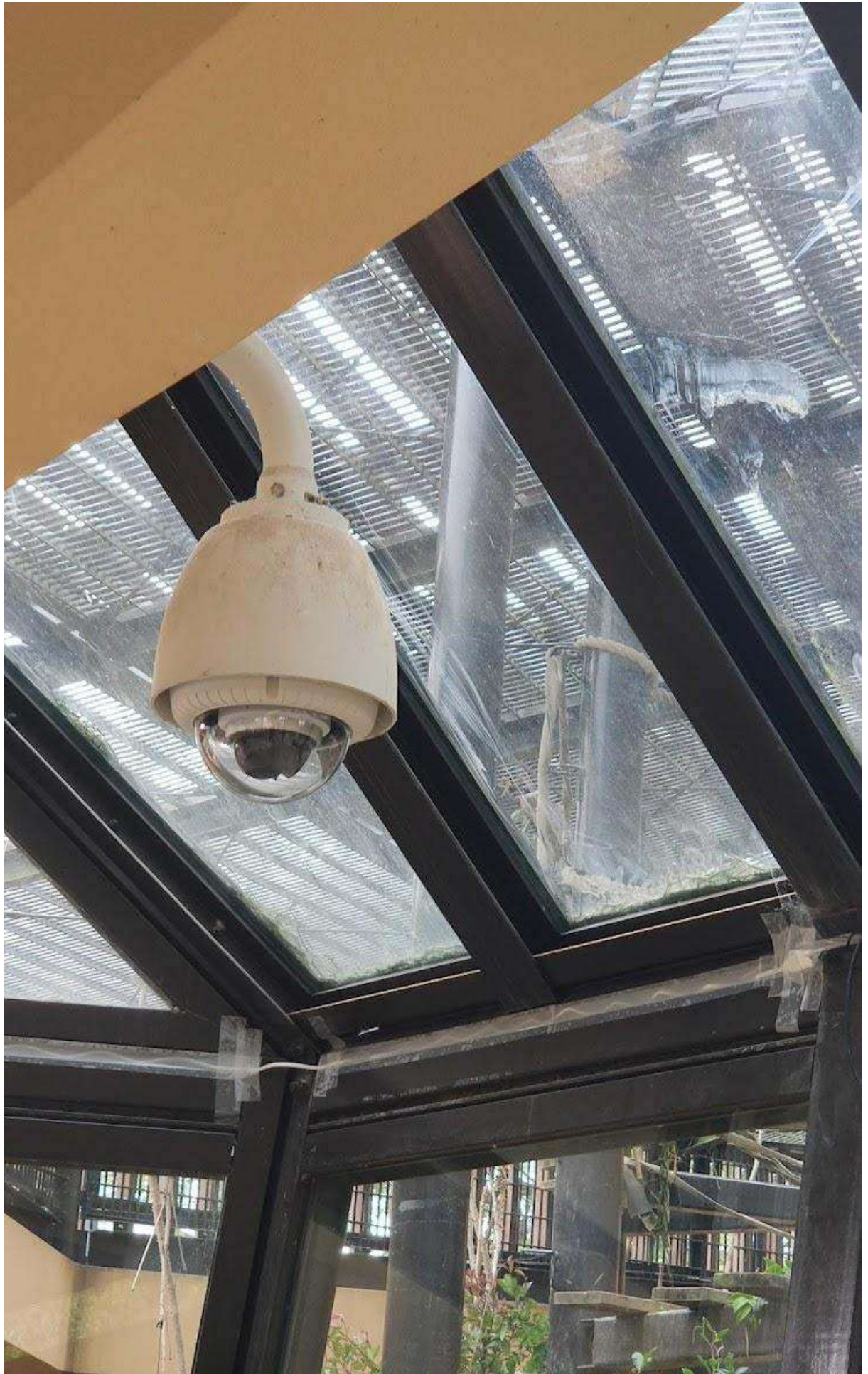
4

5

Very important

41. **Animal status detection (camera) ***

How often do you use the **Animal status detection (camera)**?





Never use

1

☐

2

☐

3

☐

4

☐

5

☐

Often use

42. **Animal status detection (camera) ***

How important do you think the **Animal status detection (camera)** is to the development of the smart zoo.

No need

1

2

3

4

5

Very important

43. **Electronic information screen ***

How often do you use the Electronic information screen?





Never use

1

2

3

4

5

Often use

44. **Electronic information screen ***

How important do you think the Electronic information screen is to the development of the smart zoo.

No need

1

2

3

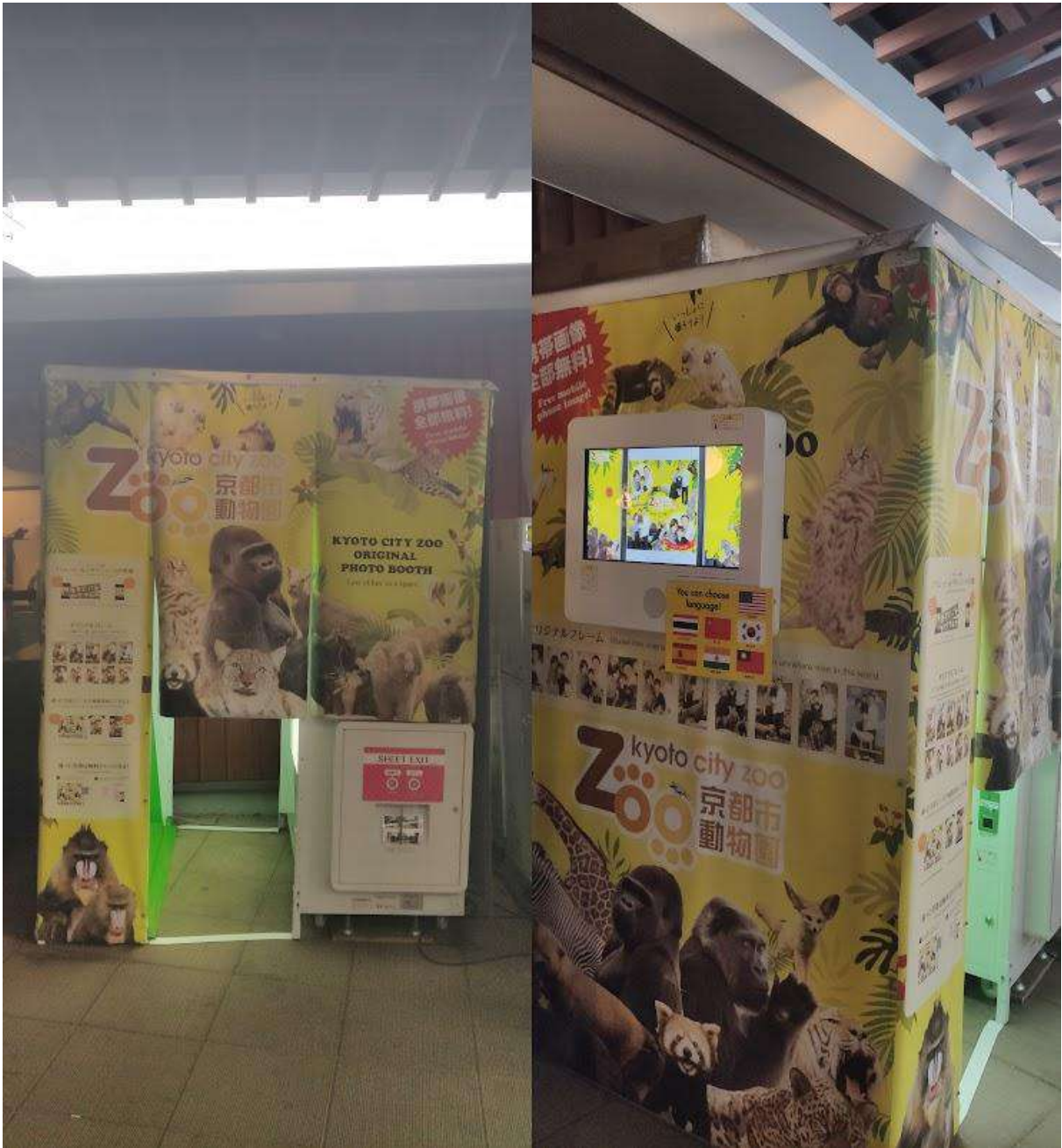
4

5

Very important

45. Smart souvenir vending (photos) *

How often do you use the Smart souvenir vending (photos)?



Never use

1

2

3

4

5

Often use

46。 **Smart souvenir vending (photos) ***

How important do you think the **Smart souvenir vending (photos)** is to the development of the smart zoo.

No need

1

2

3

4

5

Very important

Official website function

47. Official website function *

How often do you use the Official website function?



Never use

☐

1

☐

2

☐

3

☐

4

☐

5

☐

Often use

☐

48. **Official website function ***

How important do you think the **Official website function** is to the development of the smart zoo.

No need

1

2

3

4

5

Very important

49. **Tourism SNS ***How often do you use the **Tourism SNS**?



Never use

1

☐

2

☐

3

☐

4

☐

5

☐

Often use

50. **Tourism SNS ***

How important do you think the **Tourism SNS** to the development of the smart zoo.

No need

1

2

3

4

5

Very important

51.

Digital map *

How often do you use the Digital map?



Never use

1

2

3

4

5

Often use

52. **Digital map ***
How important do you think the **Digital map** to the development of the smart zoo.

No need

1

2

3

4

5

Very important

Opinions and requests

53. **Please let us know if you have any comments or ideas about smart zoos functions.**
-

Commonly used function

54. **What kind of function are you used to?**

- ☐ QR code information function
- ☐ Ecology System
- ☐ Functions within the zoo
- ☐ Official website function

Personal information

55. **Ages**

- ☐ under 20 years old
 - ☐ 21-30 years old
 - ☐ 31-50 years old
 - ☐ 51-60 years old
 - ☐ over 60 years old
-