

Supplementary Materials: Understanding Persistence to Avoid Underestimation of Collective Food Risk

Francesco Serinaldi and Chris G. Kilsby

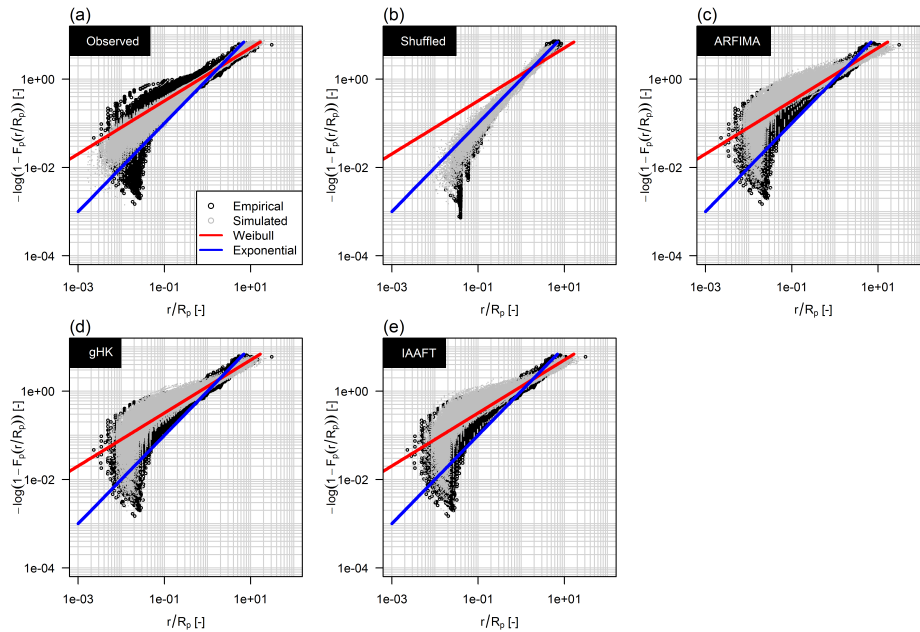


Figure S1. As for Figure 10, but for 98% threshold.

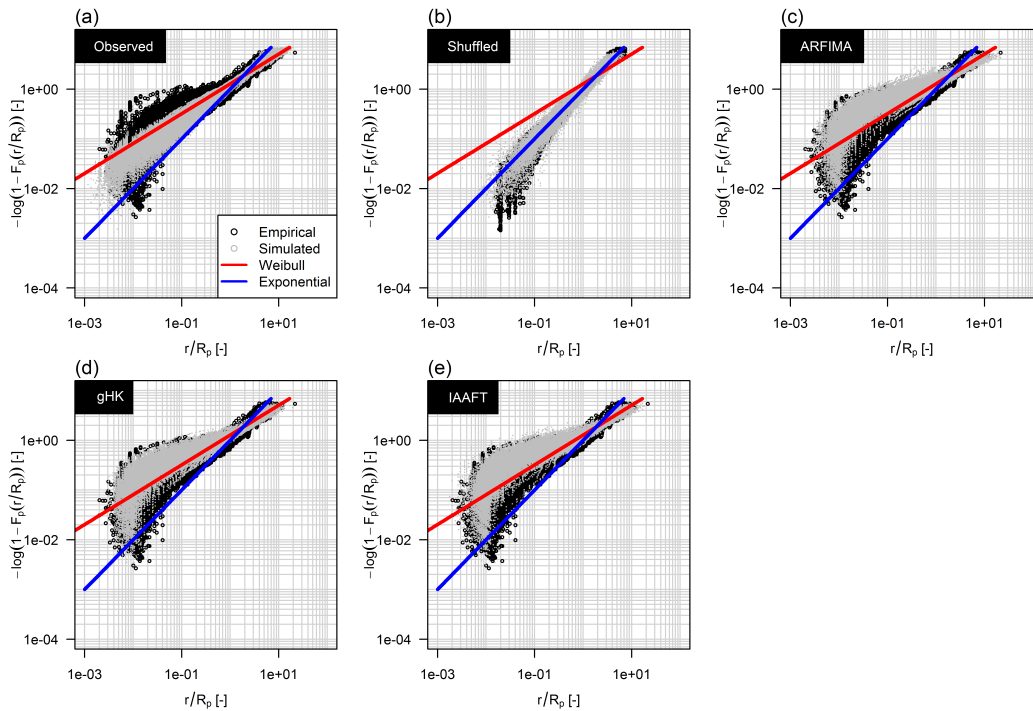


Figure S2. As for Figure 10, but for 99% threshold.

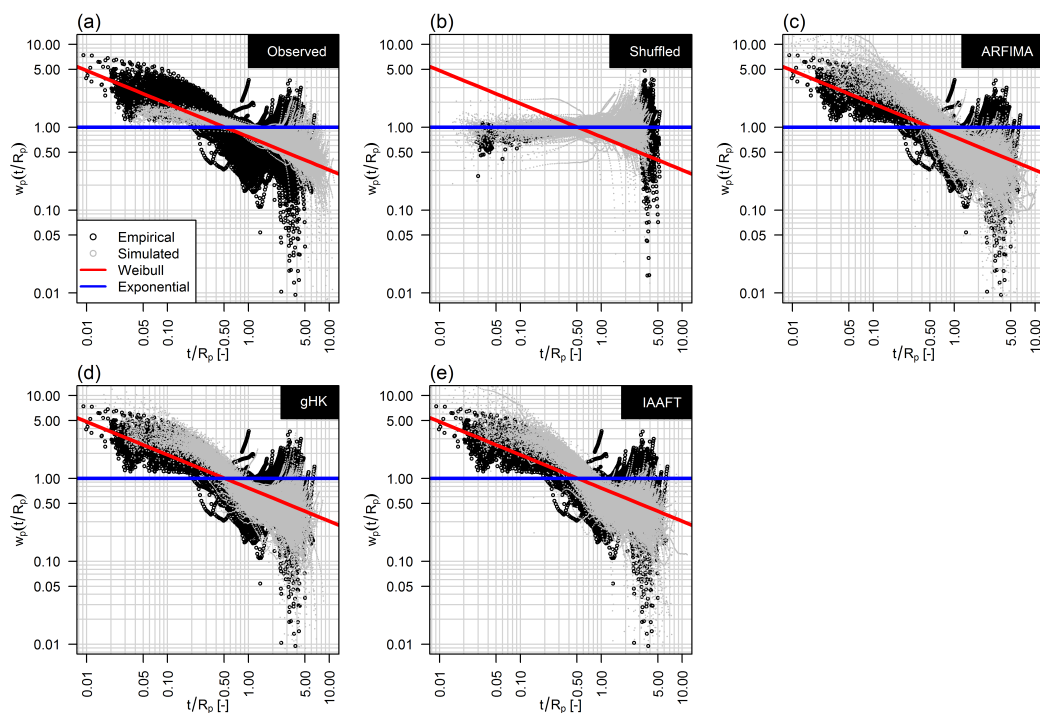


Figure S3. As for Figure 12, but for 98% threshold.

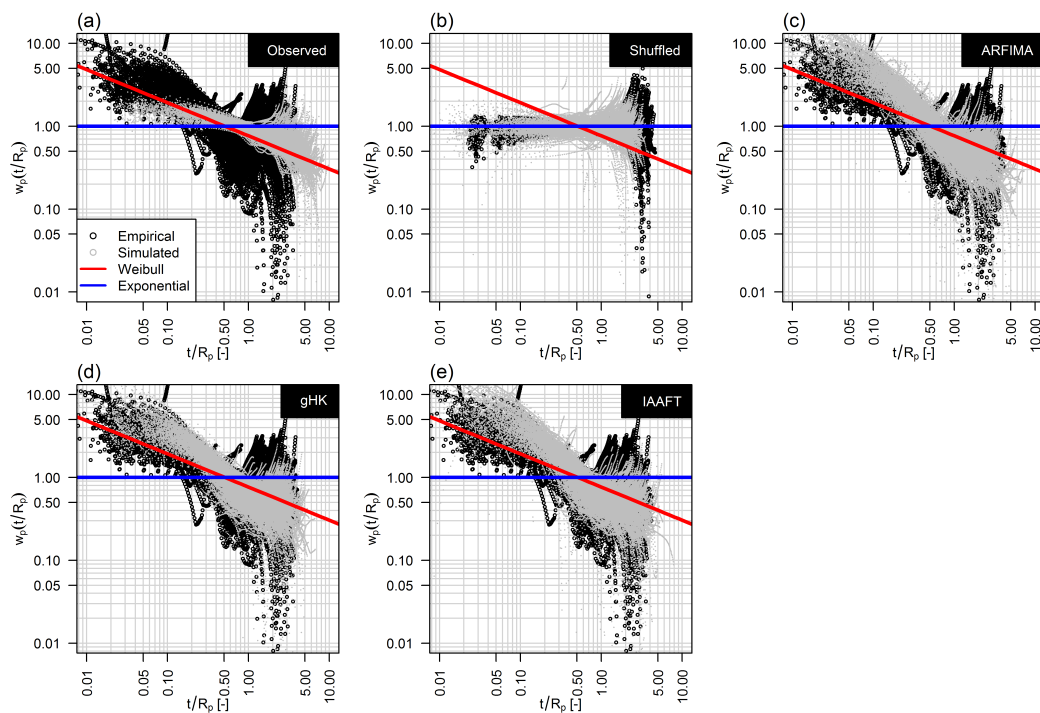


Figure S4. As for Figure 12, but for 99% threshold.

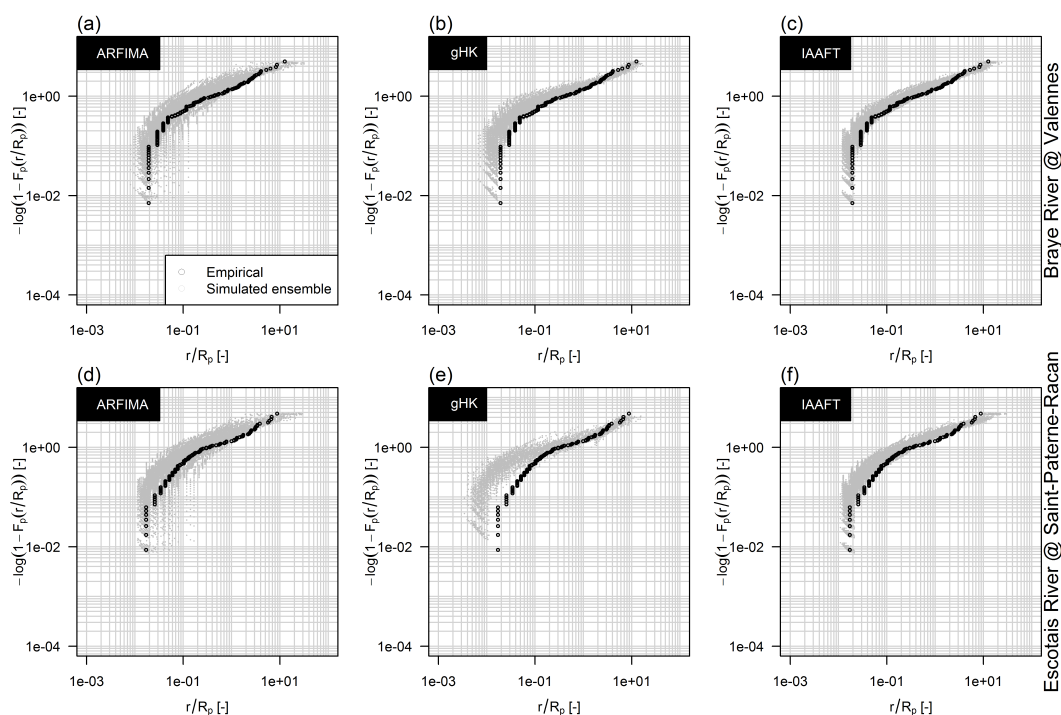


Figure S5. As for Figure 13, but for 98% threshold.

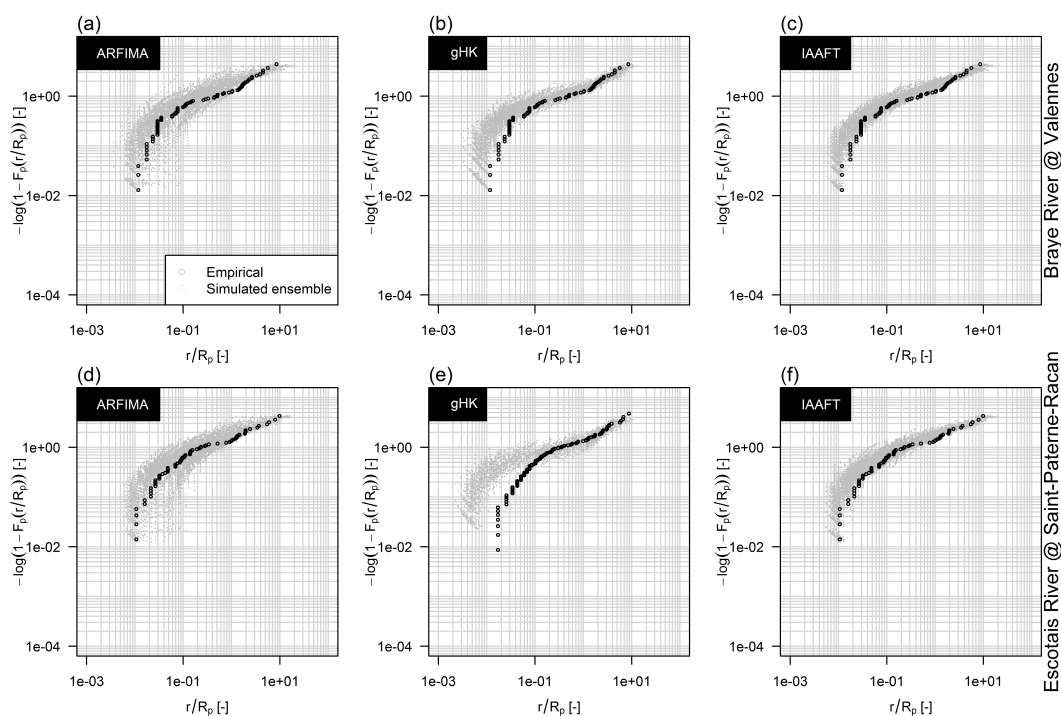


Figure S6. As for Figure 13, but for 99% threshold.

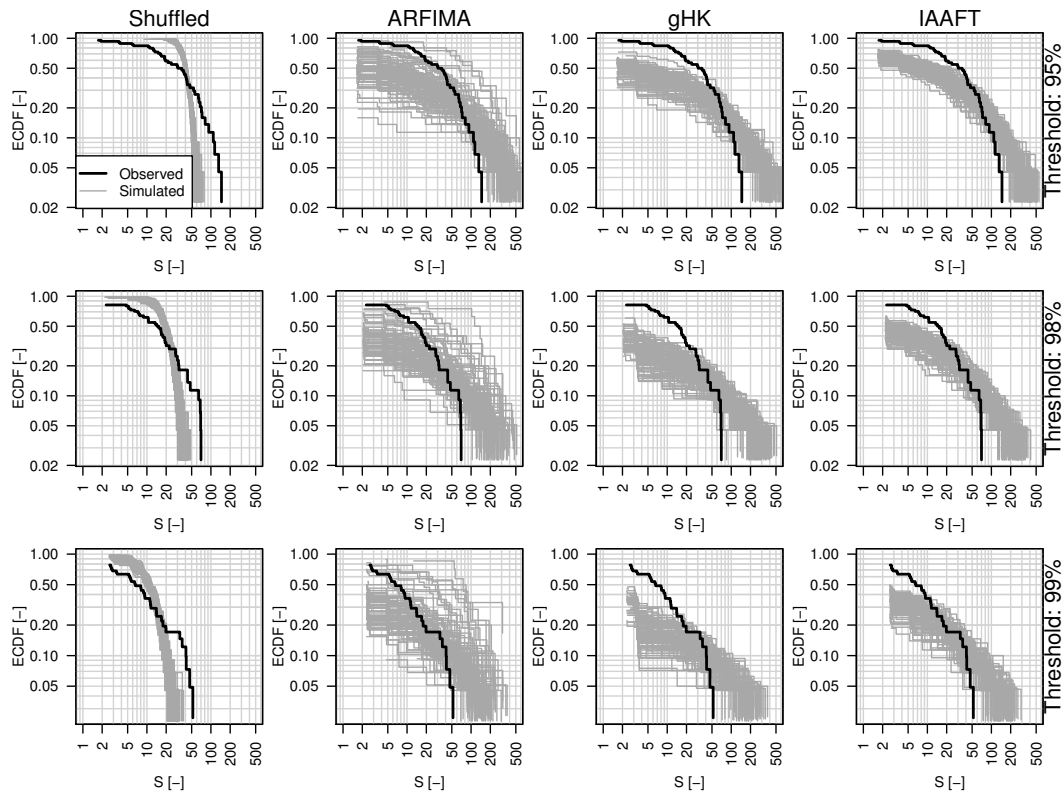


Figure S7. As for Figure 16, but for the Bray River.

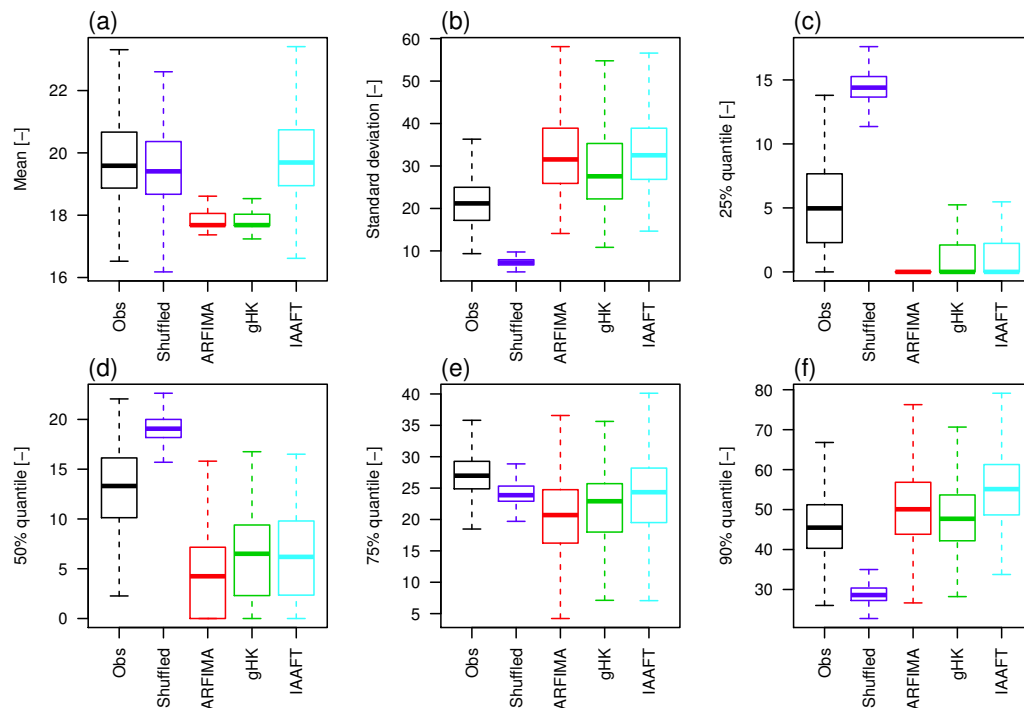


Figure S8. As for Figure 17, but for 98% threshold.

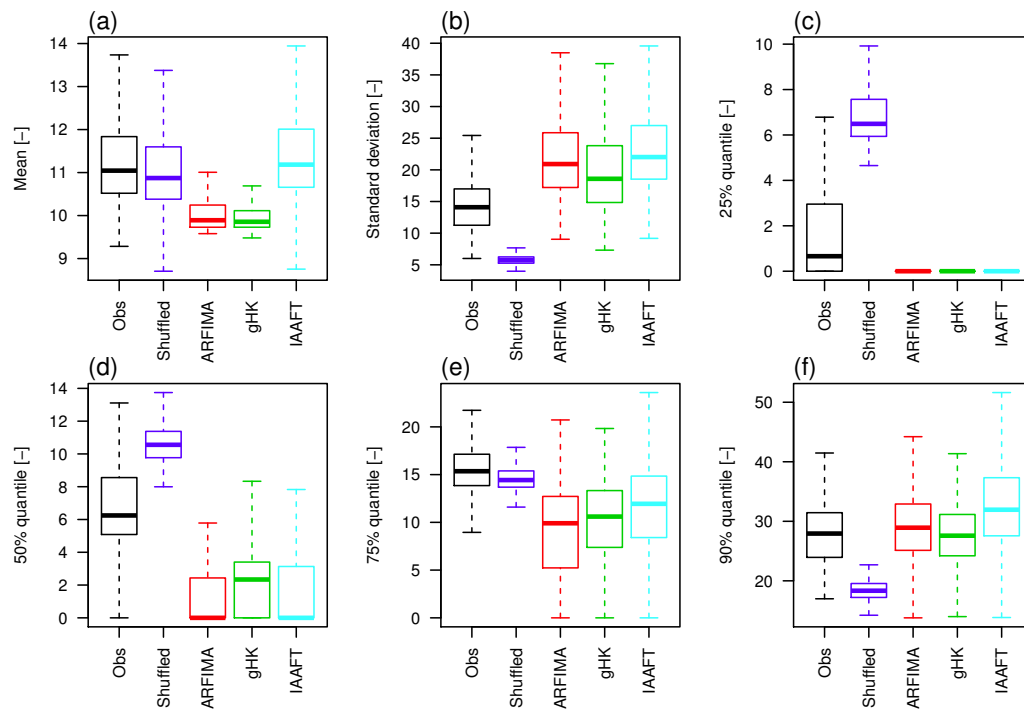


Figure S9. As for Figure 17, but for 99% threshold.

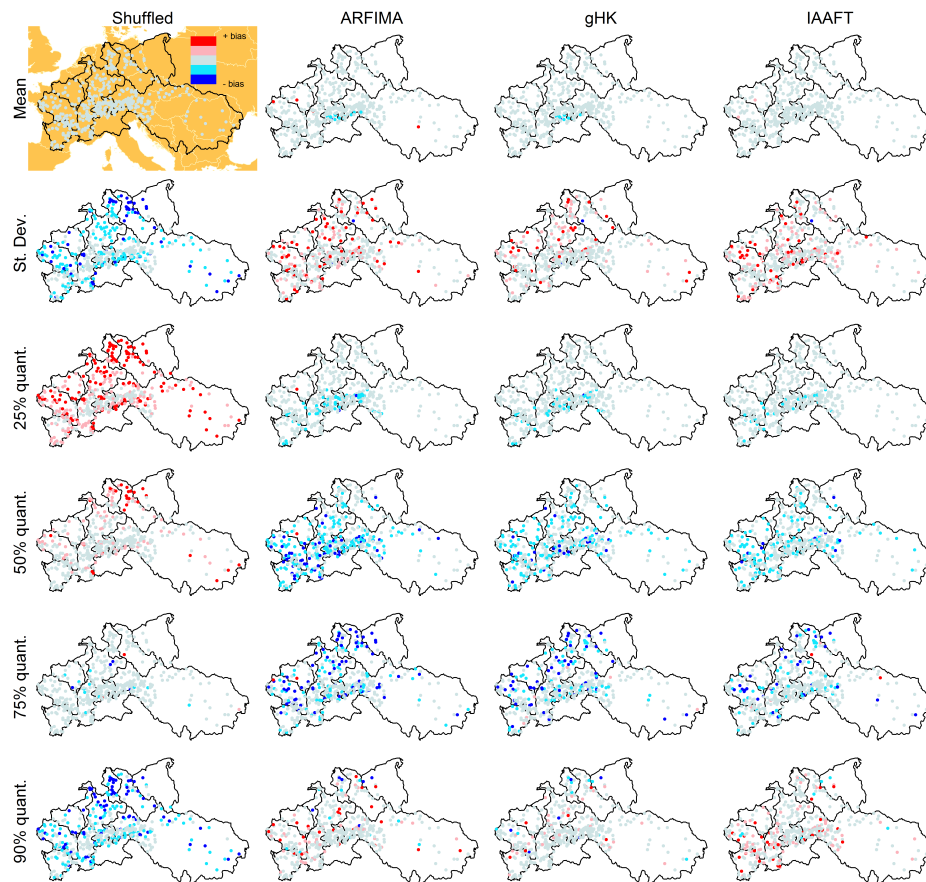


Figure S10. As for Figure 18, but for 98% threshold.

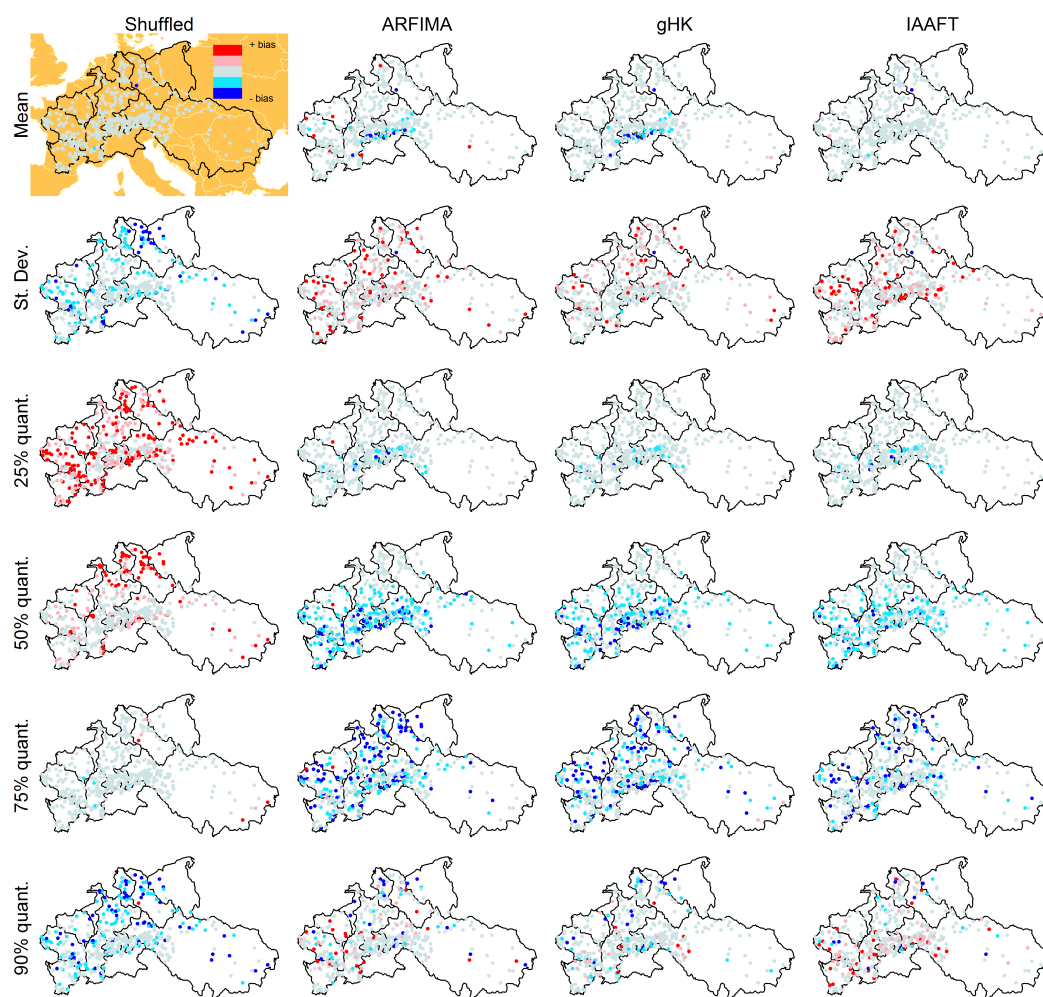


Figure S11. As for Figure 18, but for 99% threshold.