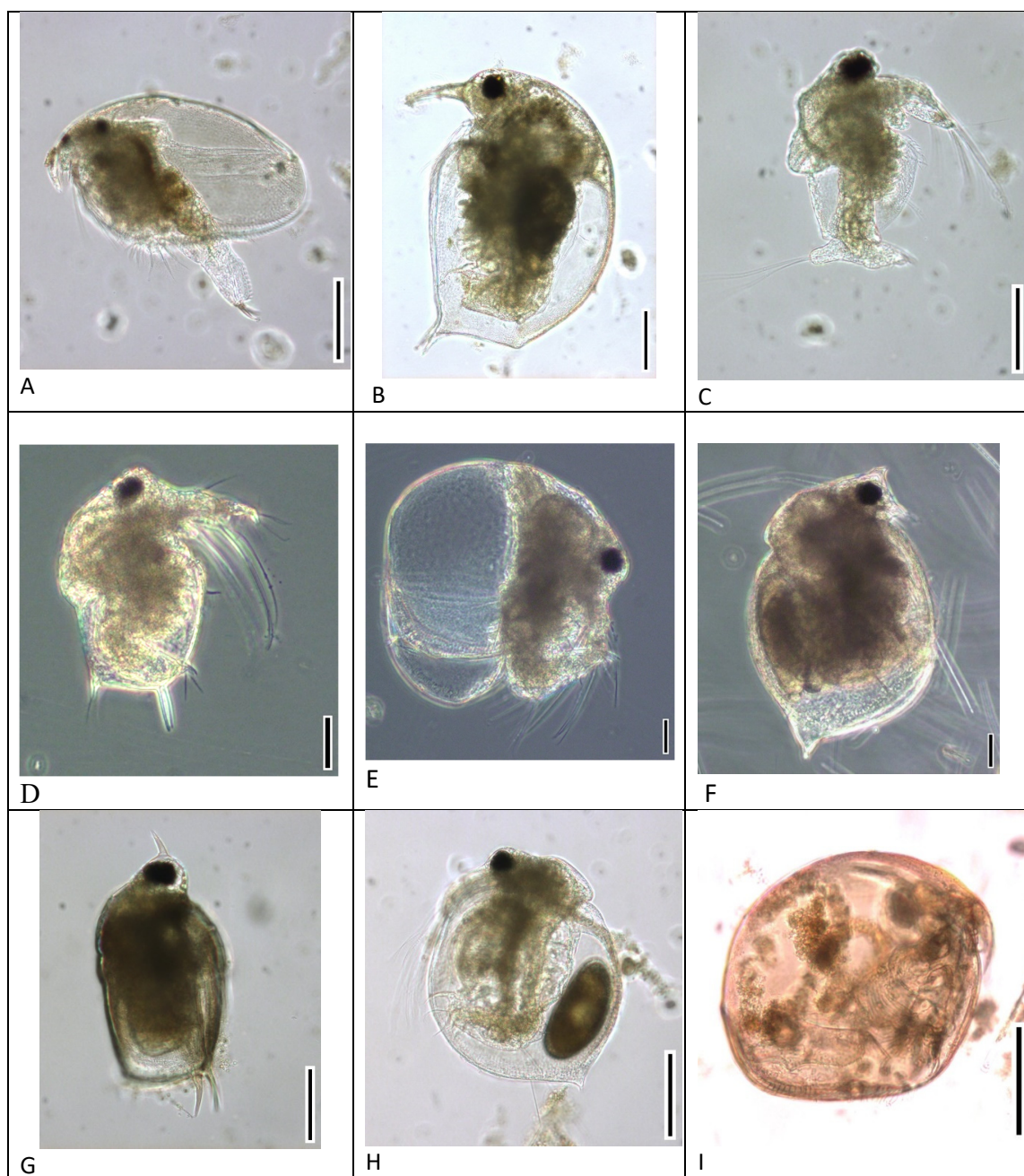
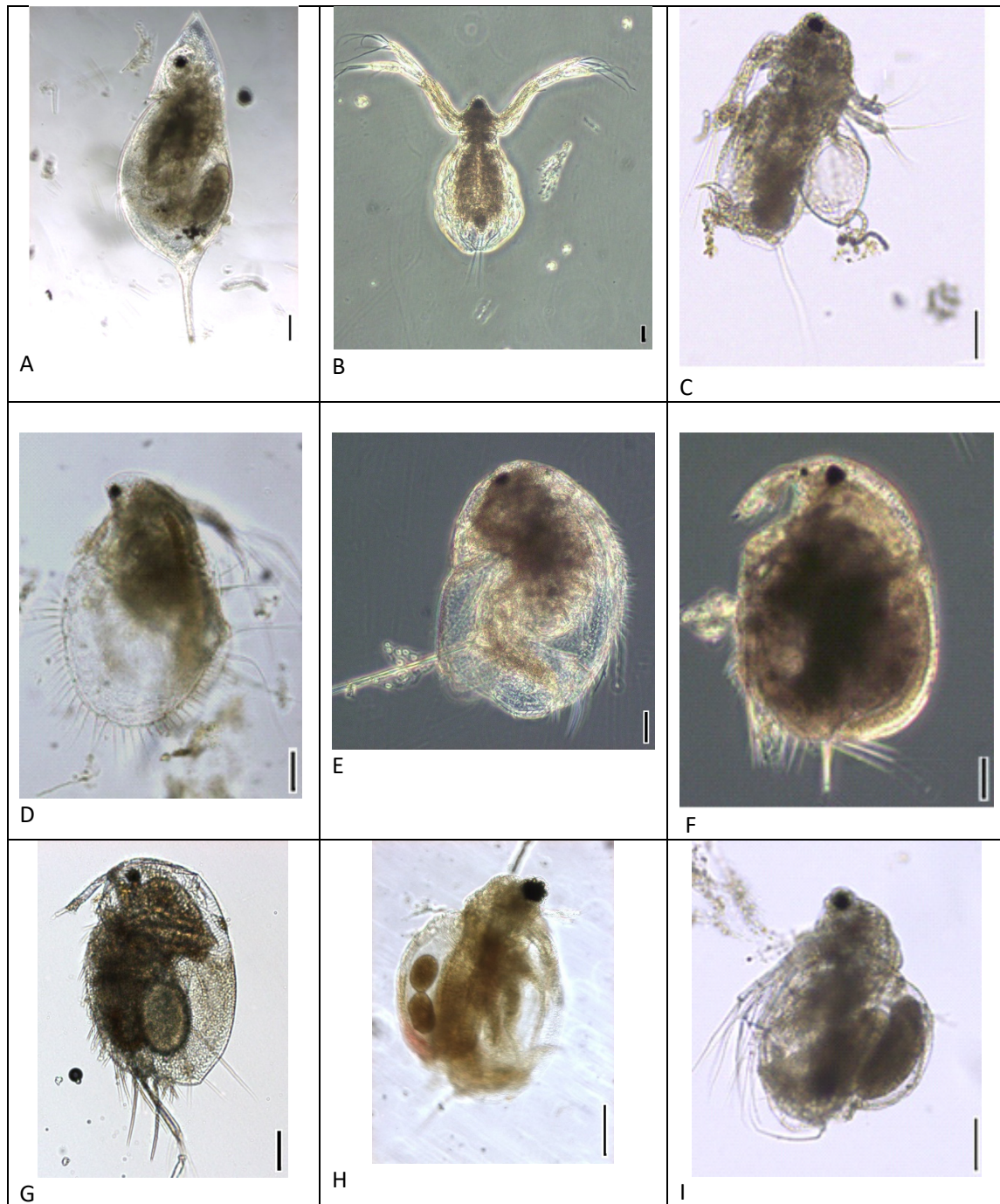


SUPPLEMENTARY FILE S1. photographic register of zooplankton species in the Napo and Pastaza floodplains.

Cladocera

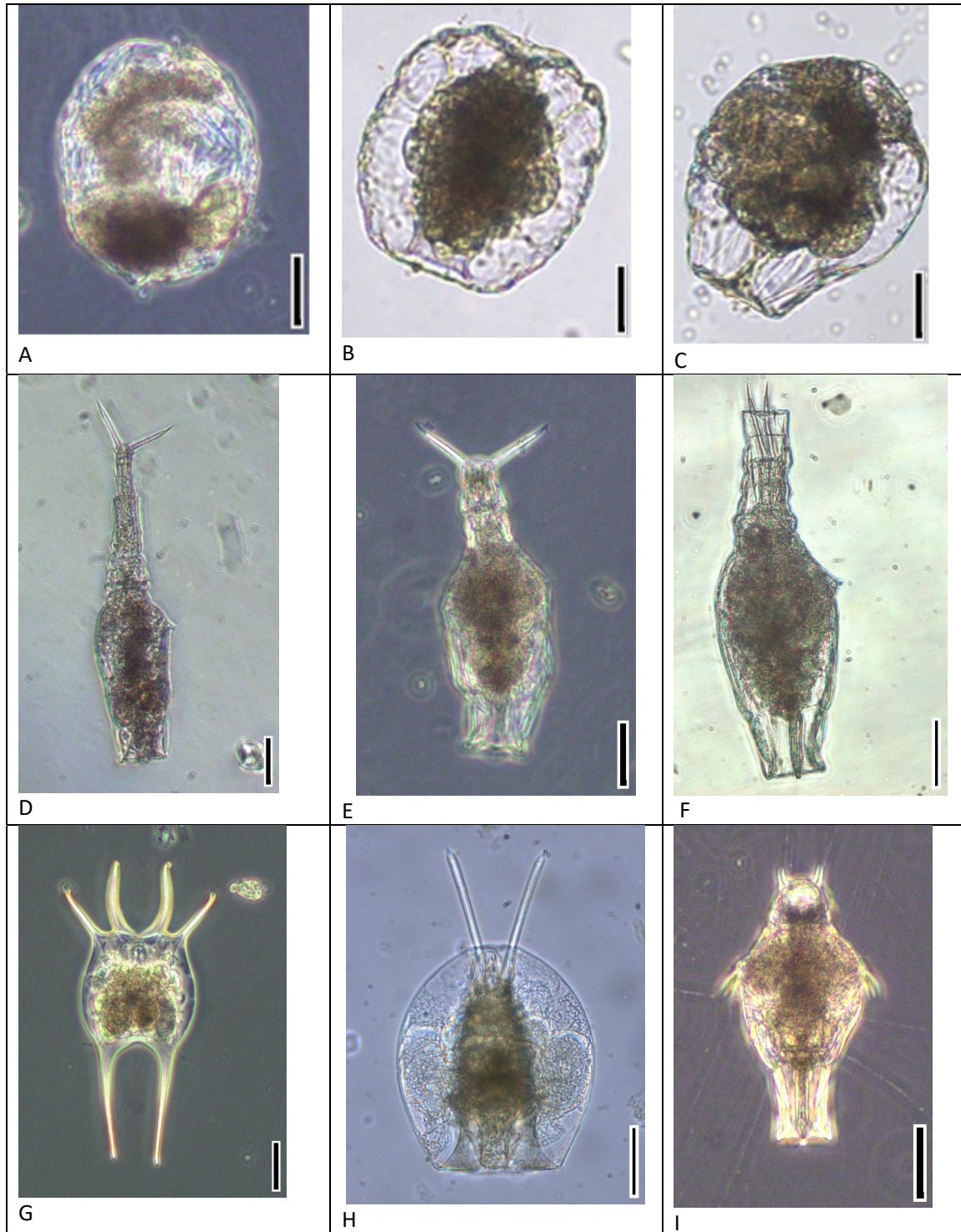


CLADOCERA. A. *Alonella dadayi*; B. *Bosmina hagmanni*; C. *Bosminopsis brandorffi*; D. *Bosminopsis deitersi*; E. *Bosminopsis* sp1; F. *Ceriodaphnia cornuta*; G. *Scapholeberis* sp1; H. *Ceriodaphnia* sp1; I. *Chydorus eurynotus*. Scale bar. A - I 100 μ m.

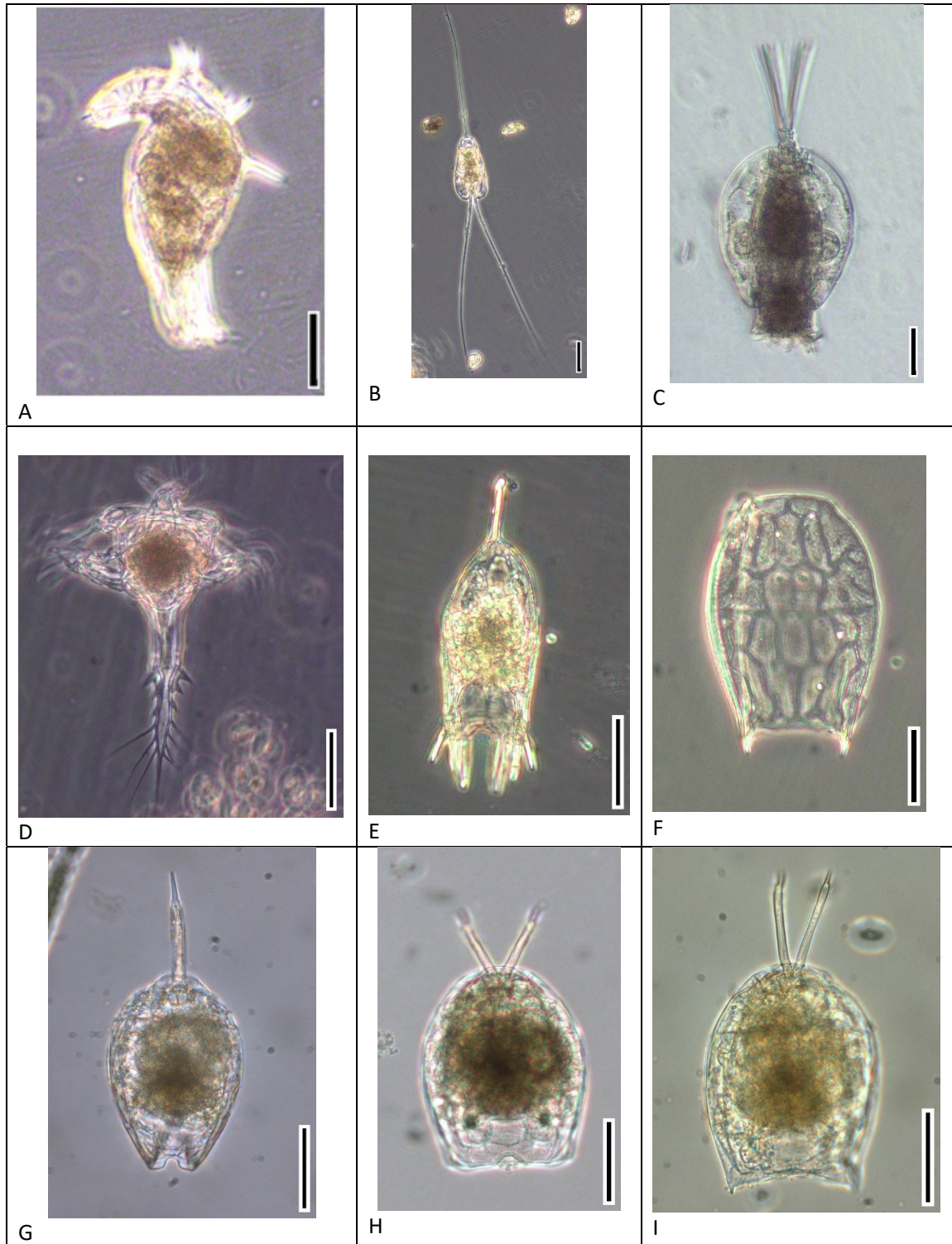


CLADOCERA. A. *Daphnia gessneri*; B. *Diaphanosoma polypinum*; C. *Diaphanosoma sp1*; D. *Ilyocryptus plumosus*; E. *Macrothrix sp1*; F. *Macrothrix sp2*; G. *Macrothrix sp3*; H. *Moina cf. Rostrata*; I. *Moina minuta*. Scale bar. A - I 100 μ m.

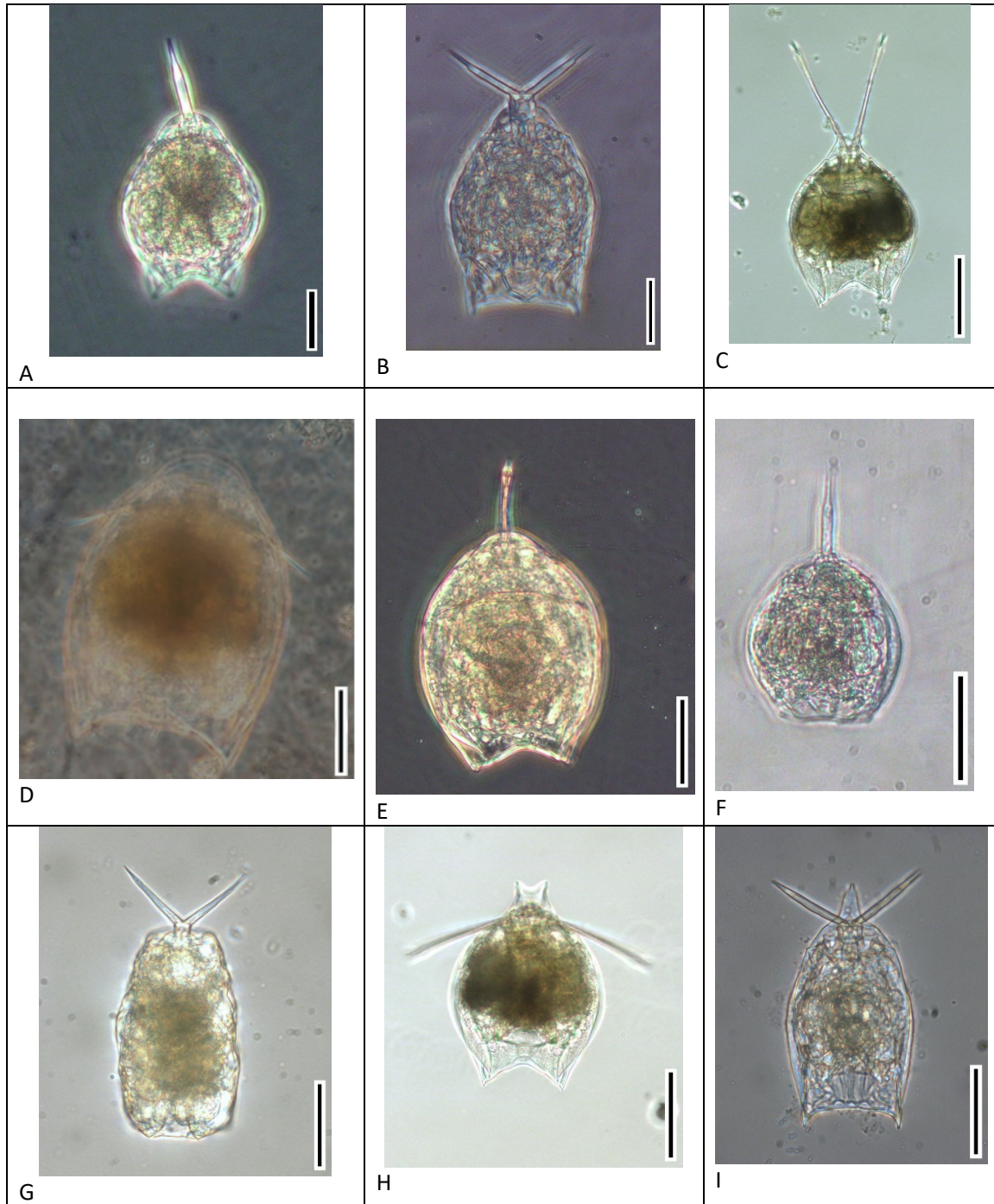
Rotifera



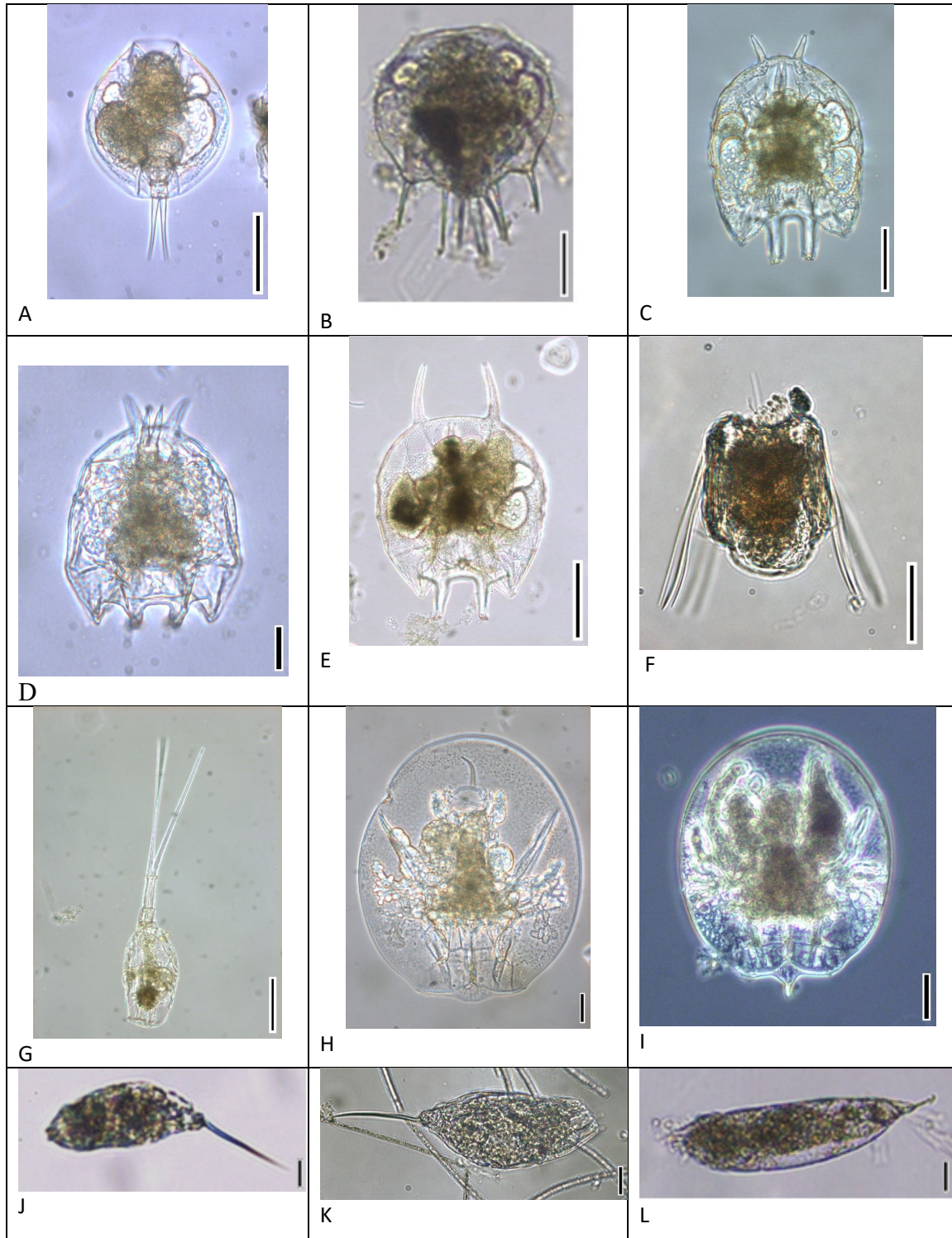
ROTIFERA. A. *Asplanchna* sp1; B. *Asplanchna* sp2; C. *Asplanchna* sp3; D. *Bdelloid* sp.1; E. *Bdelloid* sp.2; F. *Bdelloid* sp.3; G. *Brachionus zahniseri*; H. *Dipleuchlanis propatula*; I. *Dissotrocha* sp1. Scale bar. A, B, C, D, E, F, G, I. 100 μ m; H. 50 μ m.



ROTIFERA. A. *Dissotrocha* sp2; B. *Euchlanis* sp1; C. *Filinia pejleri*; D. *Hexarthra intermedia braziliensis*; E. *Keratella cochlearis*; F. *Keratella* sp 1; G. *Lecane bulla*; H. *Lecane* cf. *Elsa*; I. *Lecane curvicornis*. Scale bar. A, B, C, D, F. 100 μ m; E, G, H, I. 50 μ m.

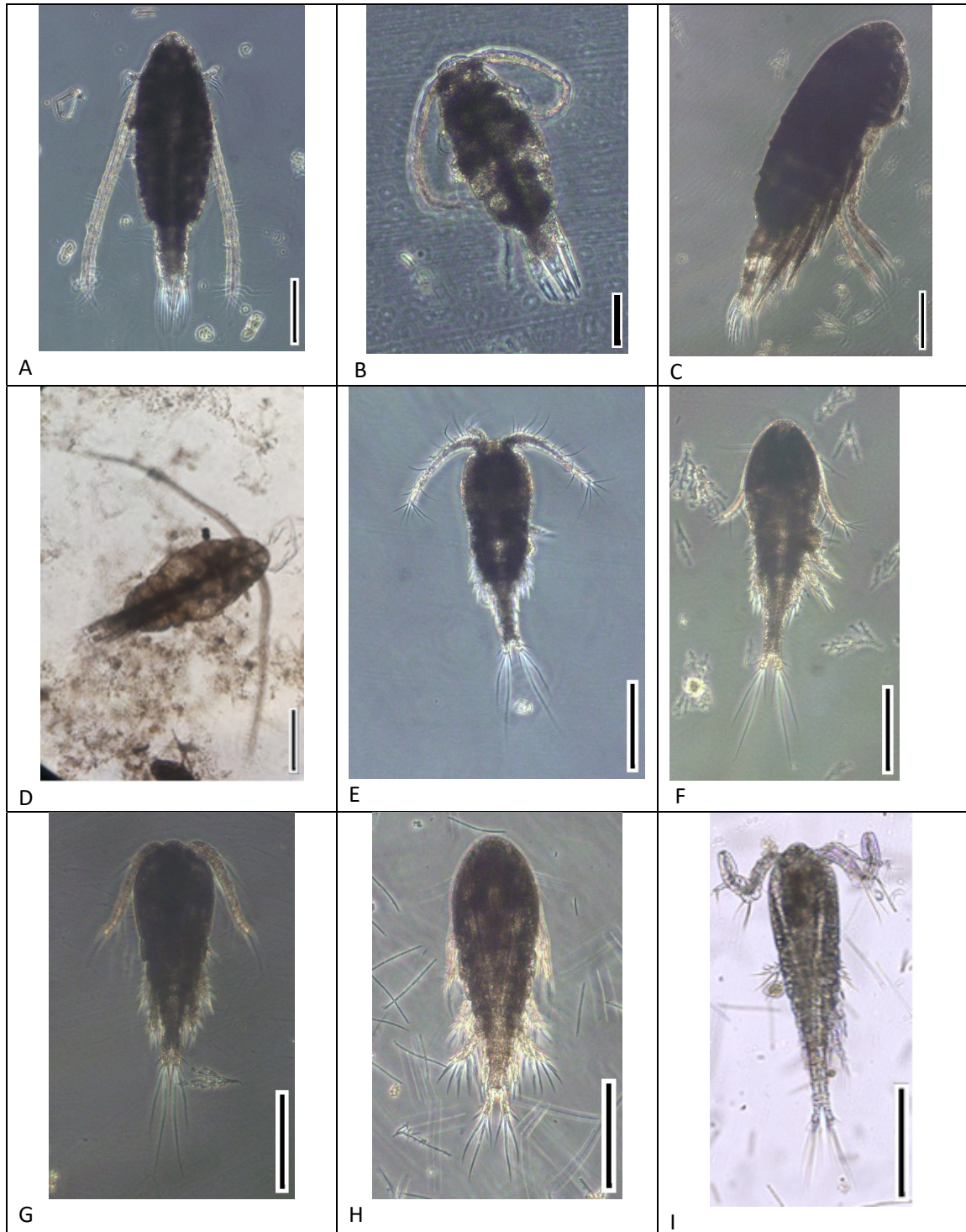


ROTIFERA. A. *Lecane hamata*; B. *Lecane cf tenuiseta*; C. *Lecane leontina*; D. *Lecane ludwigii*; E. *Lecane Monostyla sp1*; F. *Lecane Monostyla sp2*; G. *Lecane sp1*; H. *Lecane sp2*; I. *Lecane sp.*
Scale bar. A, B, G, I. 50 µm; C, D, E, F, H. 100 µm;

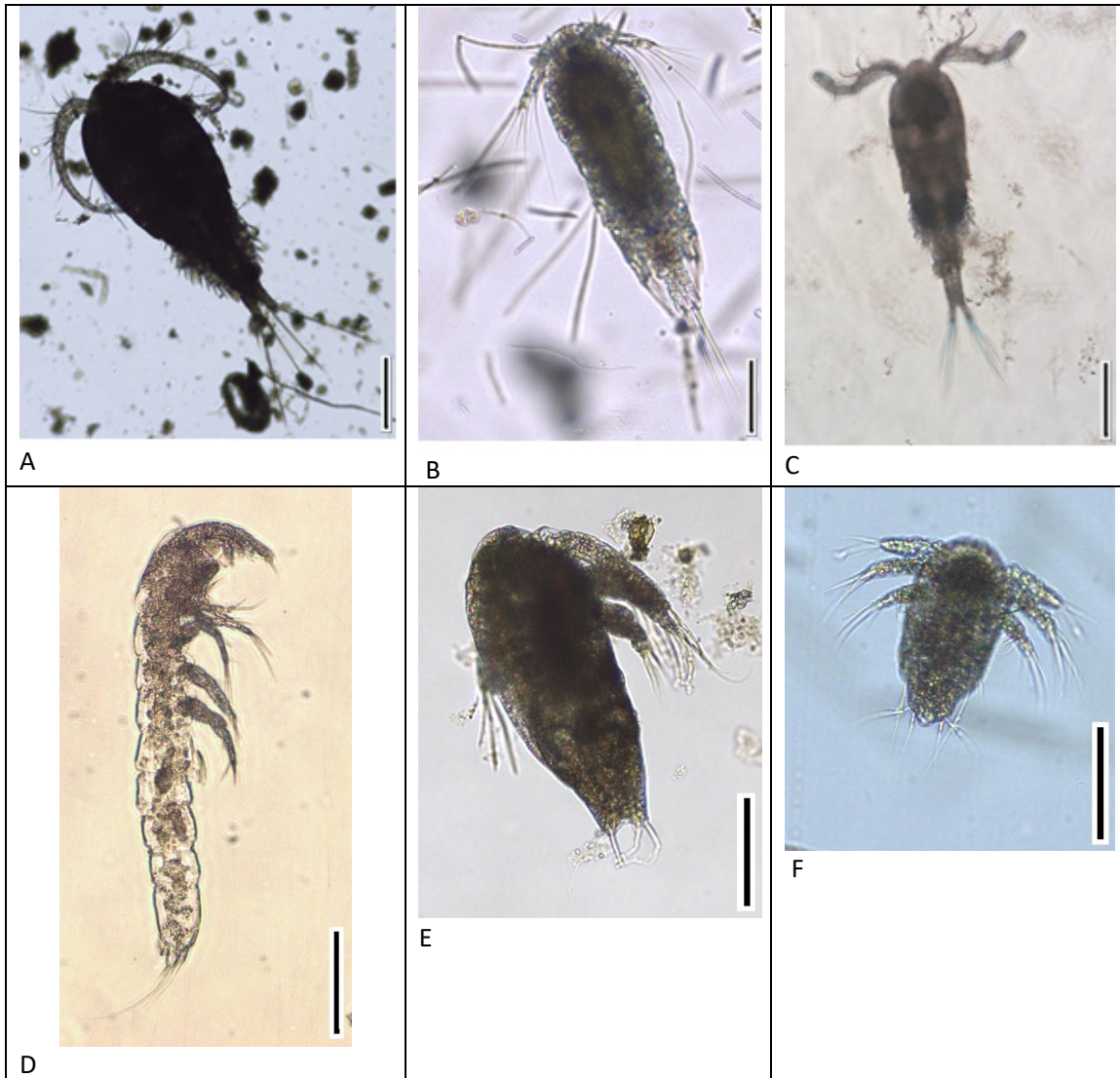


ROTIFERA. A. *Lepadella* sp1; B. *Macrochaetus altamirai*; C. *Platyias leloupi*; D. *Platyias quadricornis brevispinus*; E. *Platyias quadricornis quadricornis*; F. *Polyarthra remata*; G. *Scaridium longicauda*; H. *Testudinella haueriensis*; I. *Testudinella patina*; J- K. *Trichocerca* cf. *Pusilla*; L. *Trichocerca* sp1. Scale bar. A, B, C, E, F. 50 μ m; G, H, I. 100 μ m; D, J, K, L. 20 μ m.

Copepoda

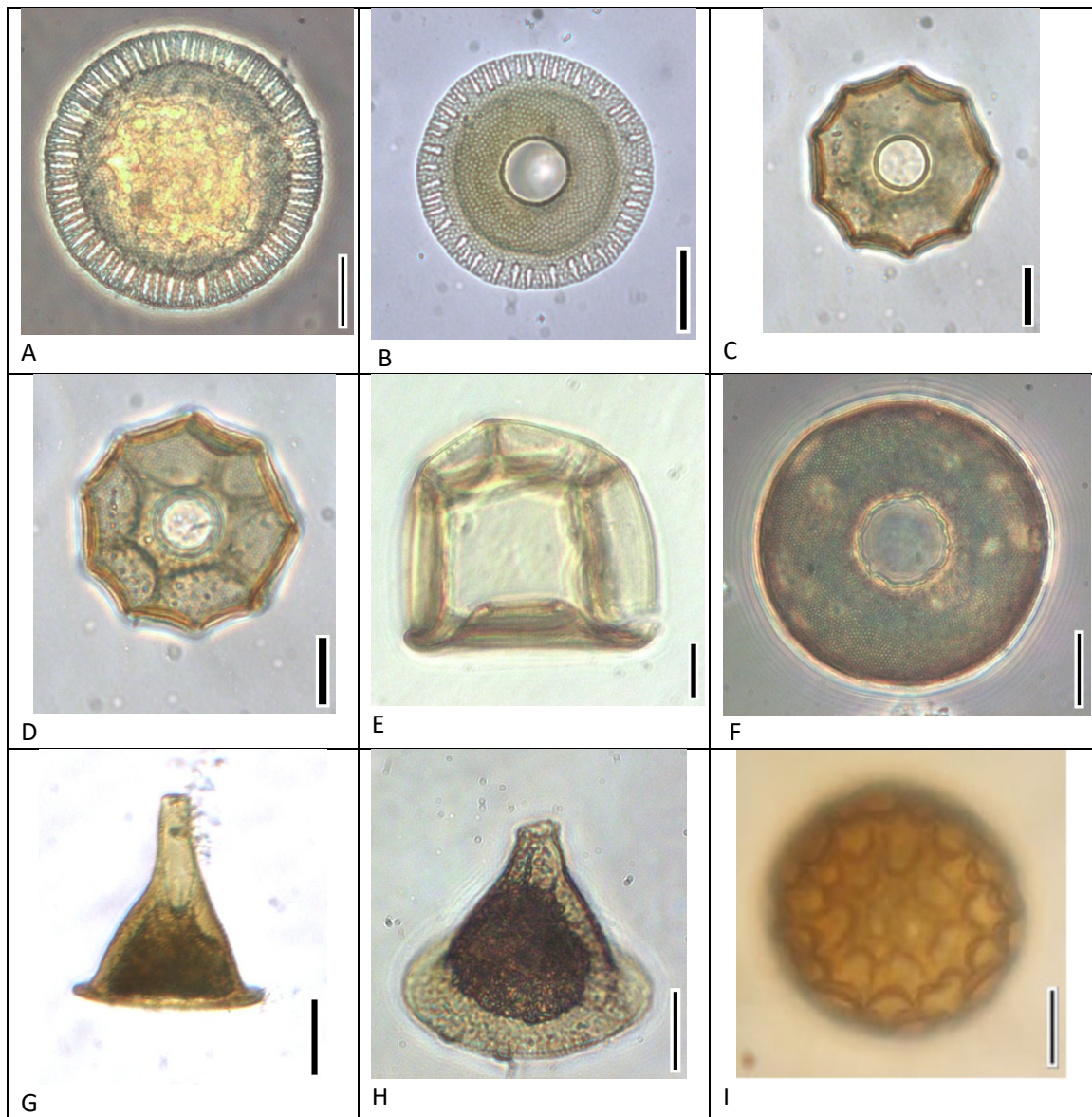


COPEPODA. A. *Copepoda Calanoidea* sp1; B. *Copepoda Calanoidea* sp2; C. *Copepoda Calanoidea* sp3; D. *Copepoda Calanoidea* sp4; E. *Copepoda Cyclopoidea* sp1; F. *Copepoda Cyclopoidea* sp2; G. *Copepoda Cyclopoidea* sp3; H. *Copepoda Cyclopoidea* sp4; I. *Copepoda Cyclopoidea* sp5. Scale bar. A, C, D, E, F, G, H, I. 500 μ m; B. 200 μ m.

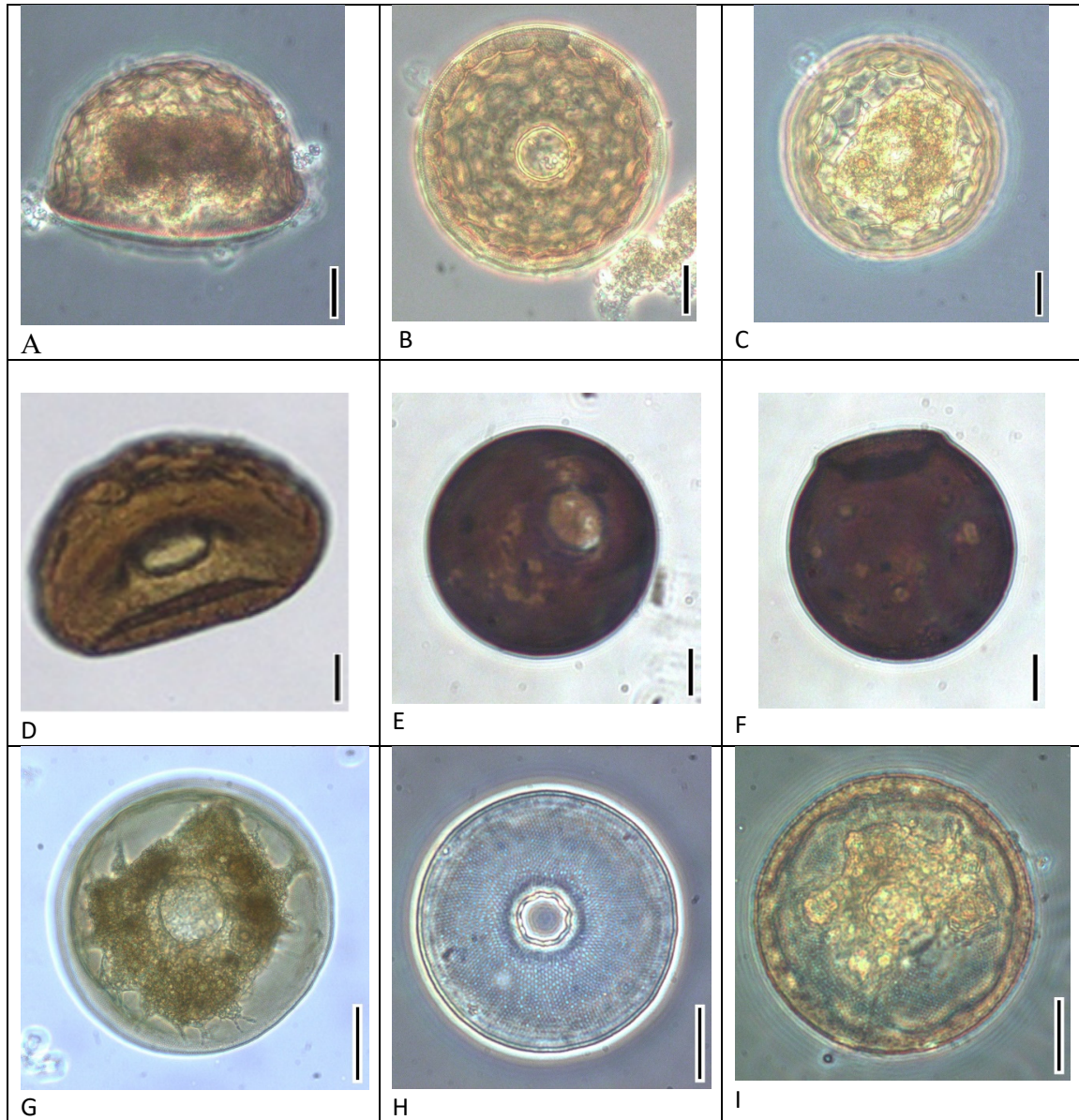


COPEPODA. A. *Copepoda Cyclopoidea* sp6; B. *Copepoda Cyclopoidea* sp7; C. *Copepoda Cyclopoidea* sp8; D. *Copepoda Herpaticioidea*; E-F. Nauplii. Scale bar. A, B, C. 500 μ m; D. 200 μ m; E, F. 100 μ m

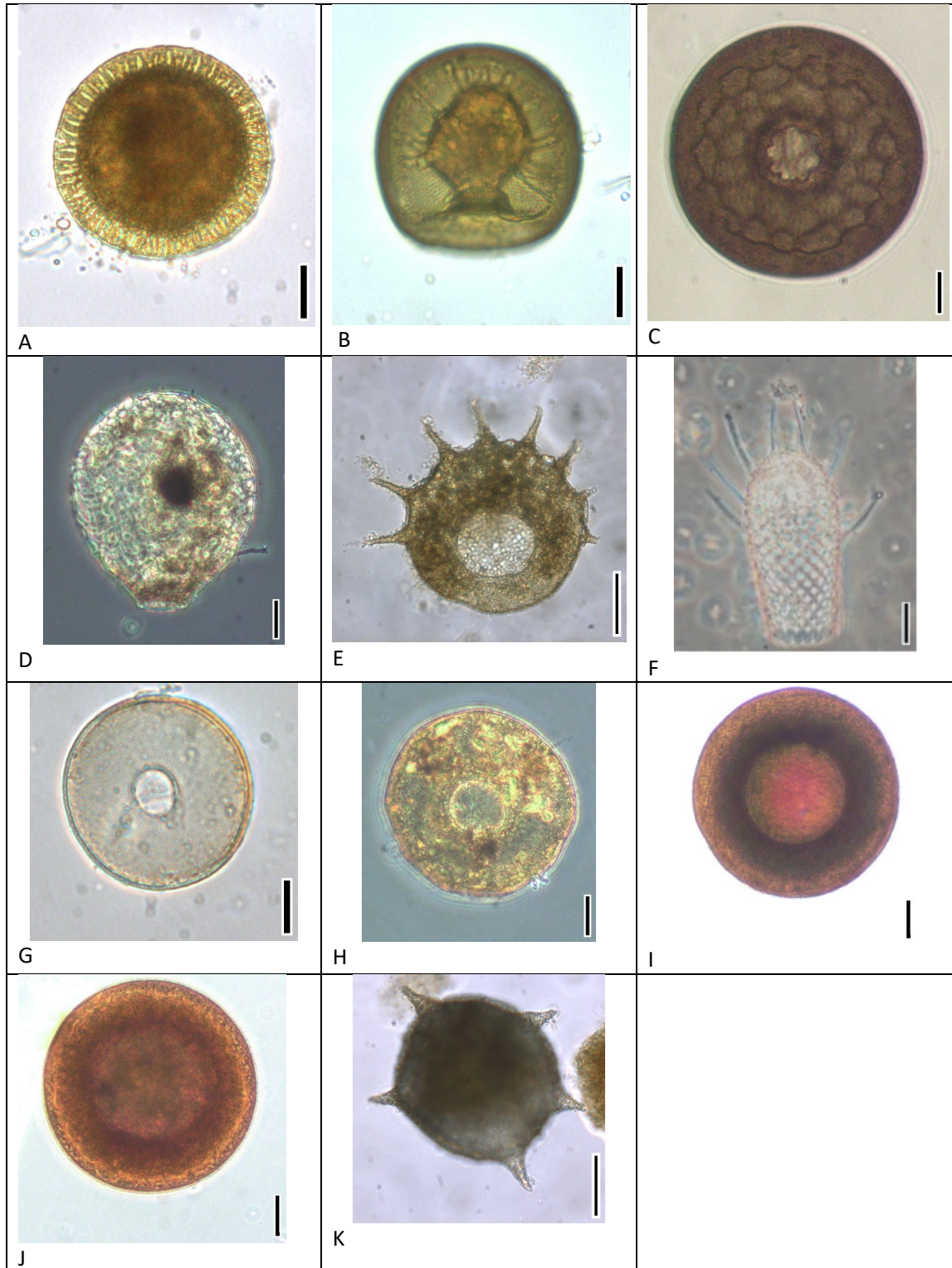
Amoebozoa



AMOEBOZOA. A-B. *Arcella brasiliensis*; C-D. *Arcella cf. Formosa*; E. *Arcella conica*; F. *Arcella crenulata*; G-H. *Arcella gandalfi*; I. *Arcella hemisphaerica*. Scale bar. A, B, E, F, G, H, I. 50 µm; C-D. 20 µm.



AMOEBOZOA. A-C. *Arcella gibbosa*; D. *Arcella cf intermedia*; E-F. *Arcella mitrata*; G; *Arcella vulgaris*; H. *Arcella sp1*; I. *Arcella sp2*. Scale bar. A - I. 50 μm .



AMOEBOZOA. A. *Arcella* sp3; B. *Arcella* sp4; C. *Arcella* sp5; D. *Argynnia dentistoma* var. *Lacustris*; E. *Centropyxis* cf *aculeata*; F. *Euglypha acanthophora*; G. *Galeripora arenaria*; H. *Galeripora* cf *arenaria*; I. *Galeripora megastoma*; J. *Galeripora* cf *megastoma*; K. *Netzelia* cf *corona*. Scale bar. A, B, G. 20 μ m; C, D, E, F, H, K. 50 μ m; I, J. 100 μ m