

Legend

Wells

- Lake
- River

Hydrology

- Lake
- River

Quaternary sediments

- Ap
- At
- Ax
- Cg
- Ed
- Go
- Gs
- Gx
- GxT
- L
- LGb
- LGd
- MGa
- MGb
- MGd
- O
- R
- Ri
- Rs
- Tc
- Tm

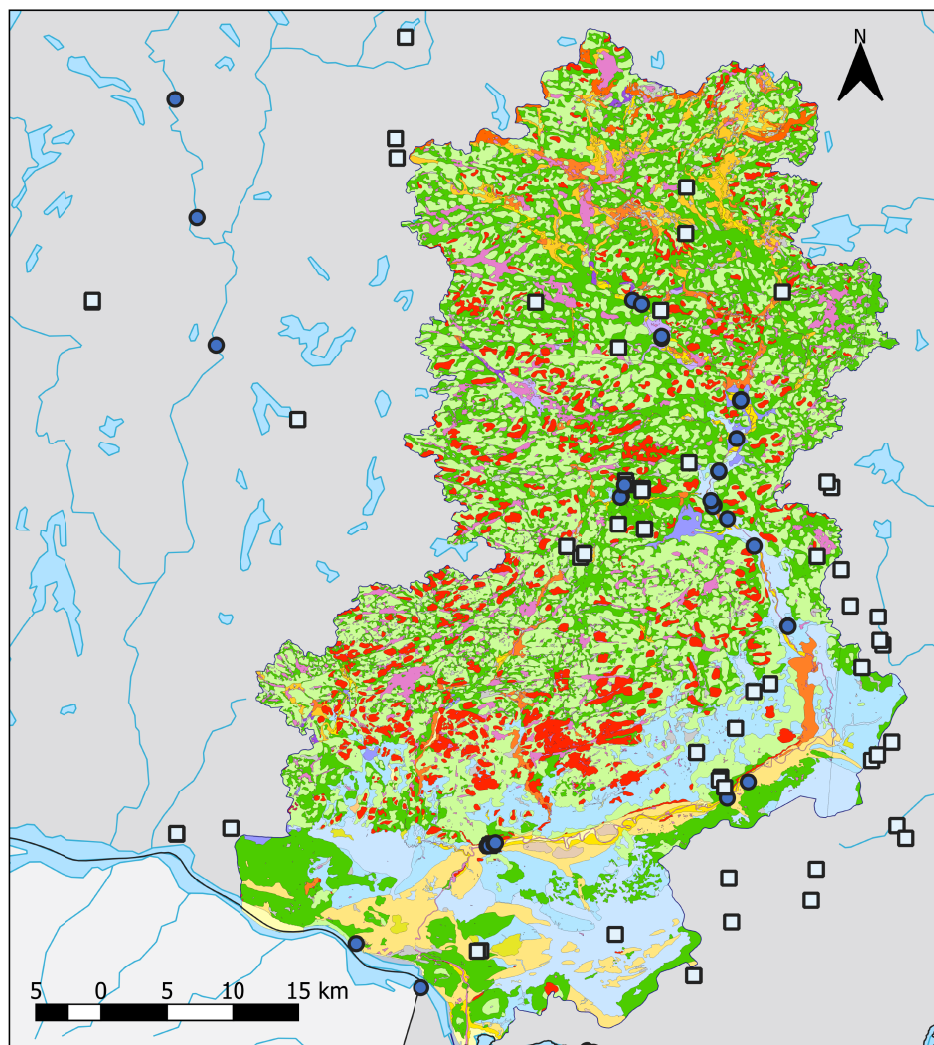


Figure S1: Map of Areas #1 (Laurentides) with quaternary geology and well distribution

Legend

Wells

- Lake
- River

Hydrology

- Lake
- River

Quaternary sediments

- Ap
- At
- Ax
- Cg
- Ed
- Gs
- Gx
- L
- Lb
- Ld
- LGb
- LGd
- MGa
- MGb
- MGd
- O
- R
- T
- Tc
- Tm
- Tr
- Trm
- Q

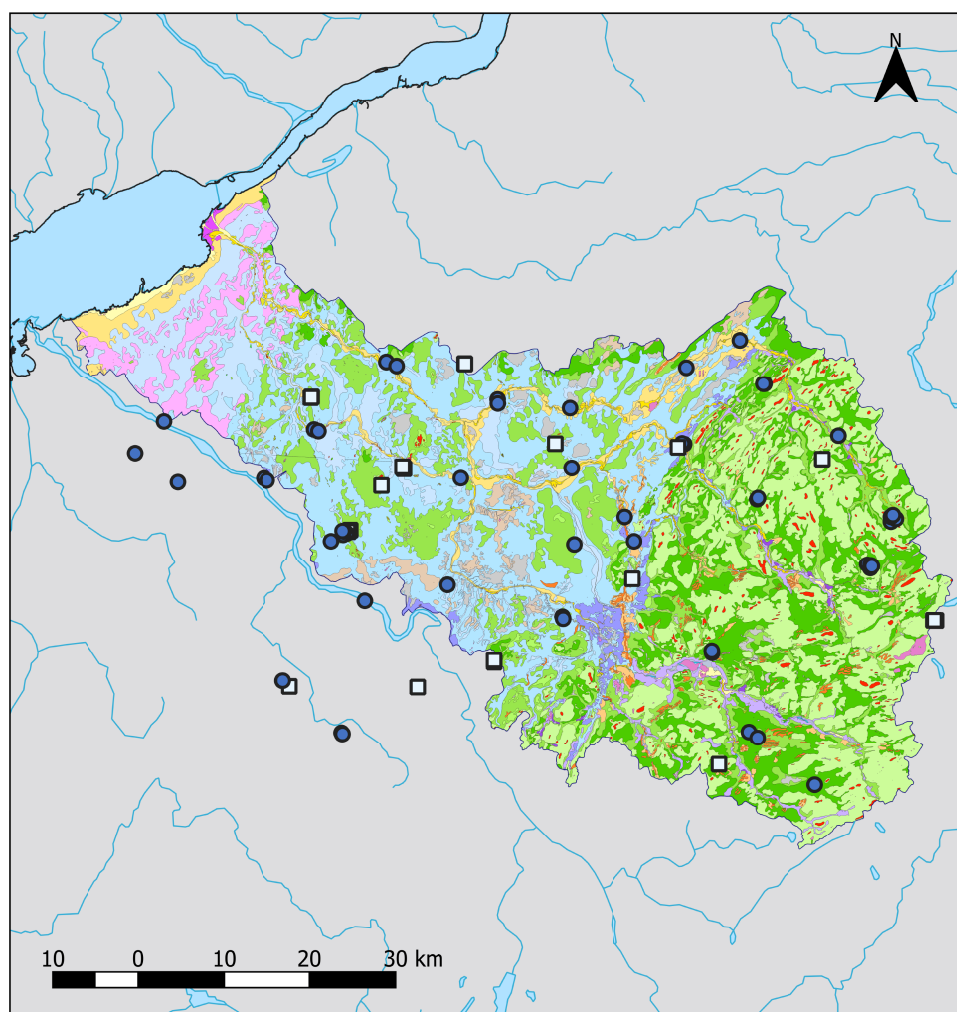


Figure S2: Map of Areas #2 (Nicolet) with quaternary geology and well distribution,

Legend

Wells

- Lake
- River

Hydrology

- Lake
- River

Quaternary sediments

- Ap
- At
- Ax
- Cg
- Ed
- Gs
- Gx
- L
- Ld
- MGa
- MGb
- MGd
- O
- R
- Ri
- Rs
- Tc
- Tm
- Tr
- Trm

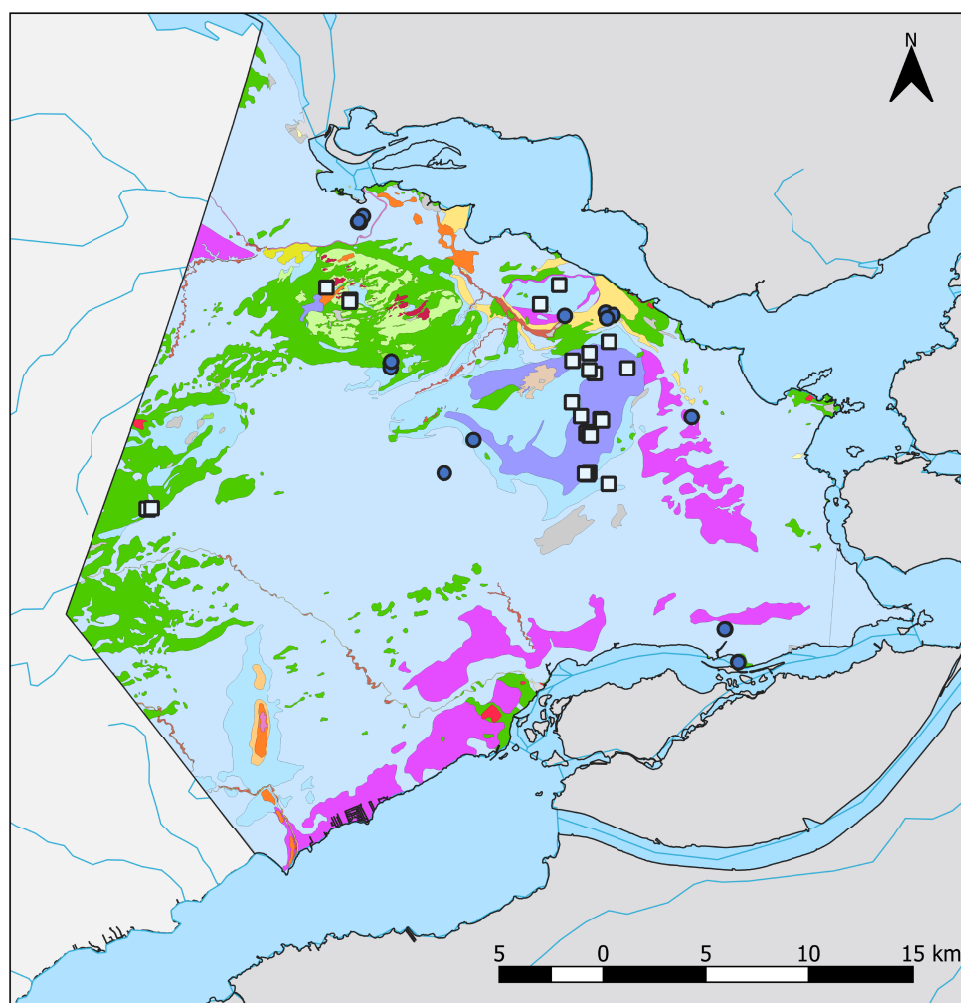


Figure S3: Map of Areas #3 (Vaudreuil Soulanges) with quaternary geology and well distribution

Table S1: Legend for the quaternary geology units in Figure S1, S2, S3.

CODE_DEPOT	DESCRIPTION
A	Undifferentiated alluvium
Trm	Alluvial fan
Ae	Old estuarine sediment
Ap	Active alluvium
At	River terrace's alluvium
Ax	Old river terrace's alluvium
C	Undifferentiated colluvium deposit
Ca	Avalanche deposit
Ce	Scree deposit
Cg	Landslide deposit
Cl	Stratified scree
Cr	Rocky glacier deposit
Ed	Eolian sediment
El	Loess
G	Undifferentiated proglacial sediment
Go	Sediment of subaerial proglacial spreading
Gs	Sediment of underwater proglacial spreading
Gx	Ice-contact sediment
GxT	Sediment of the frontal moraine
Gxi	Interlobate ice-contact sediment
L	Undifferentiated lacustrine sediment
LG	Undifferentiated glaciolacustrine sediment
LGa	Deep-water fine glaciolacustrine sediment
LGb	Coastal and pre-littoral glaciolacustrine sediment
LGd	Deltaic / prodeltaic glaciolacustrine sediment
La	Deep-water fine lacustrine sediment
Lb	Coastal and pre-littoral lacustrine sediment
Ld	Deltaic / prodeltaic lacustrine sediment
M	Undifferentiated marine sediment
MG	Undifferentiated glaciomarine sediment
MGa	Deep-water fine glaciomarine sediment
MGb	Coastal and pre-littoral glaciomarine sediment
MGd	Deltaic / prodeltaic glaciomarine sediment
MGi	Intertidal glaciomarine sediment
Ma	Deep-water fine marine sediment
Mb	Coastal and pre-littoral marine sediment
Md	Deltaic / prodeltaic marine sediment
Mi	Intertidal marine sediment
O	Undifferentiated organic sediment
Om	Swampland and swamp sediment
Ot	Peatland sediment
Q	Undifferentiated ancient quaternary formation
Qa	Altered ancient quaternary formation
Qf	Felsenmeer (blockfield)
R	Undifferentiated rock in place
Rd	Deformed metasedimentary and / or metavolcanic rock
Ri	Intrusive igneous rock

Rm	High grade metamorphic rock
Rs	Sedimentary and / or volcanic rocks
T	Undifferentiated till
Tc	Till on a generally continuous cover
Tf	Melt-out or ablation till
Tm	Till in thin, discontinuous cover
Tr	Till remodeled in continuous cover
Ac	Till remodeled in discontinuous cover