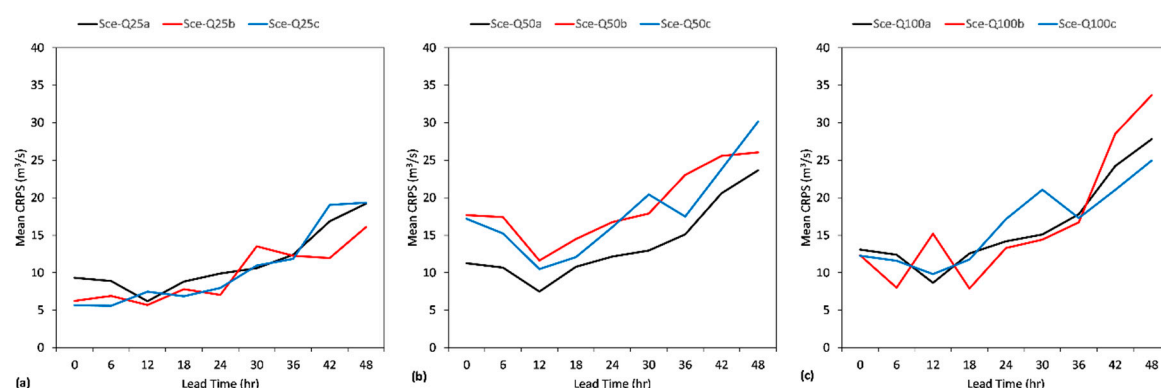
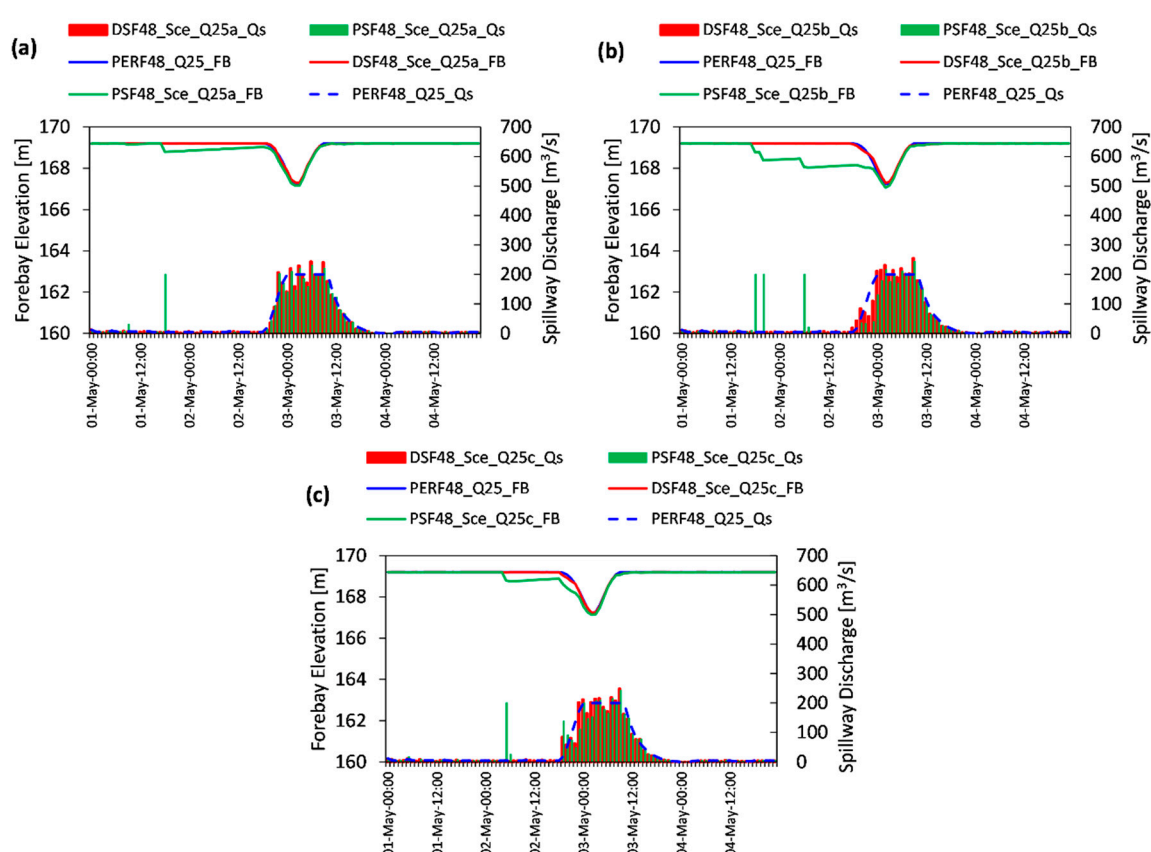


# Supplementary Materials: Real-Time Flood Control by Tree-Based Model Predictive Control Including Forecast Uncertainty: A Case Study Reservoir in Turkey

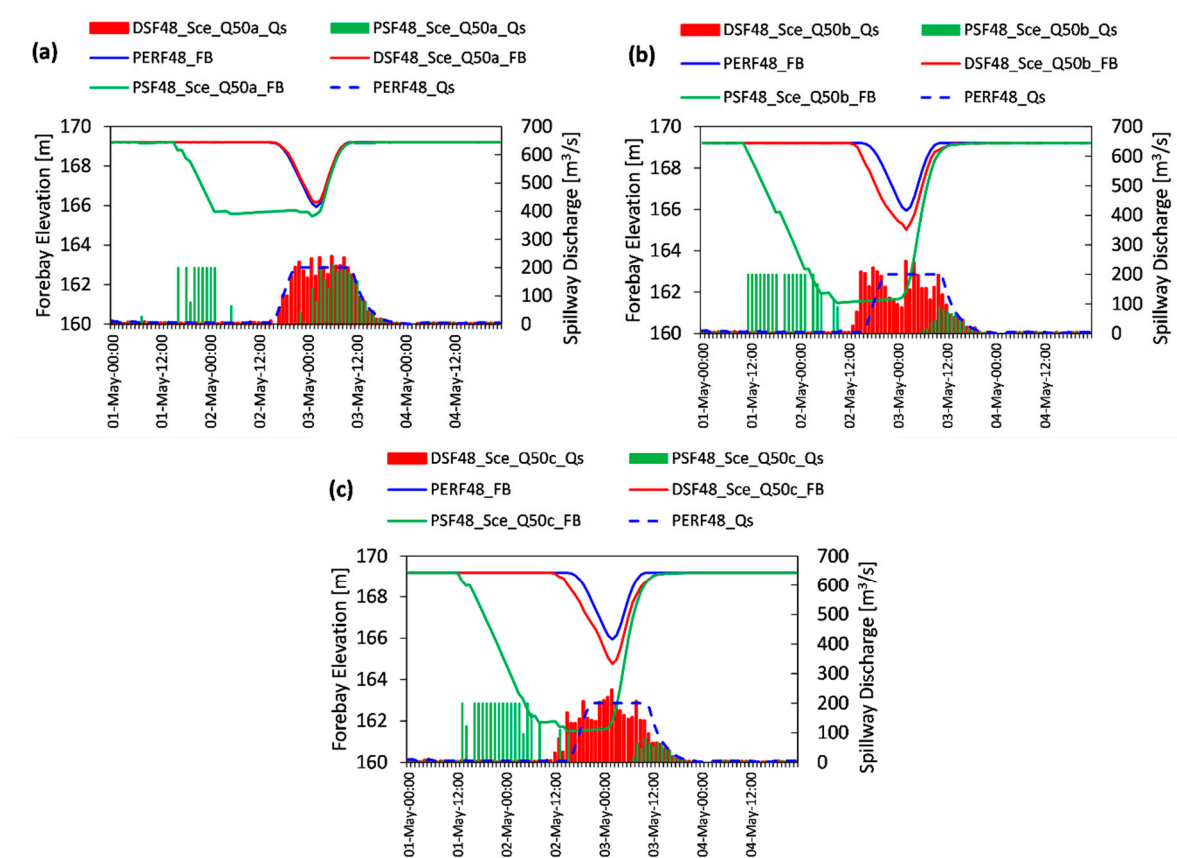
Gökçen Uysal, Rodolfo Alvarado-Montero, Dirk Schwanenberg and Aynur Şensoy



**Figure S1.** mean CRPS of ensemble scenarios: (a) Sce-Q25; (b) Sce-Q50; (c) Sce-Q100.



**Figure S2.** Comparison of deterministic (perfect and DSF) and stochastic (PSF) closed-loop MPC results with different forecast scenarios for Q25: (a) Sce-Q25a; (b) Sce-Q25b; (c) Sce-Q25c.



**Figure S3.** Comparison of deterministic (perfect and DSF) and stochastic (PSF) closed-loop MPC results with different forecast scenarios for  $Q_{50}$ : (a) Sce-Q50a; (b) Sce-Q50b; (c) Sce-Q50c.