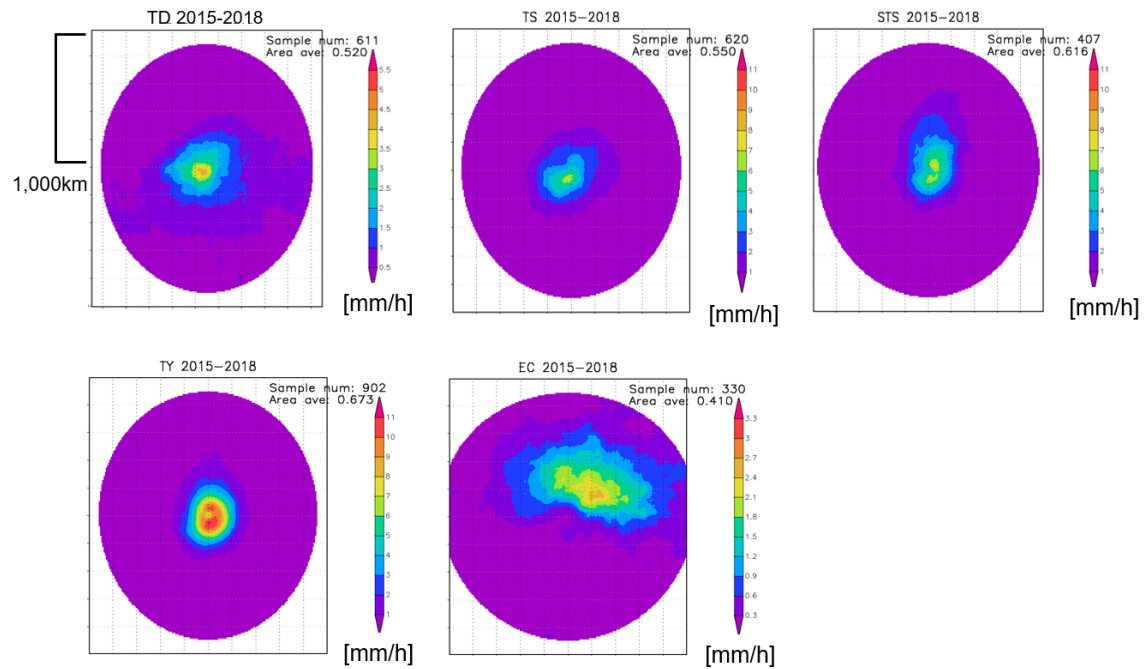


Supplementary Materials

Figure S1: TC precipitation composites.

Composited precipitation distribution (mm/h) for TD, TS, STS, TY and EC. The number of samples and areal mean precipitation are noted upper-right corner of each panel.



Source: Shirakawa, A. (2021)

Figure S2: Areal averaged hourly precipitation.

Areal averaged hourly precipitation (mm/h) from August 9th (00UTC) to August 10th (12UTC). a) Shimokita Peninsula (averaged over a white box shown in Fig.3a), b) Akagawa (shown in Fig.1c), c) Yagen (shown in Fig.1c) and d) Mutsu (shown in Fig.1d).

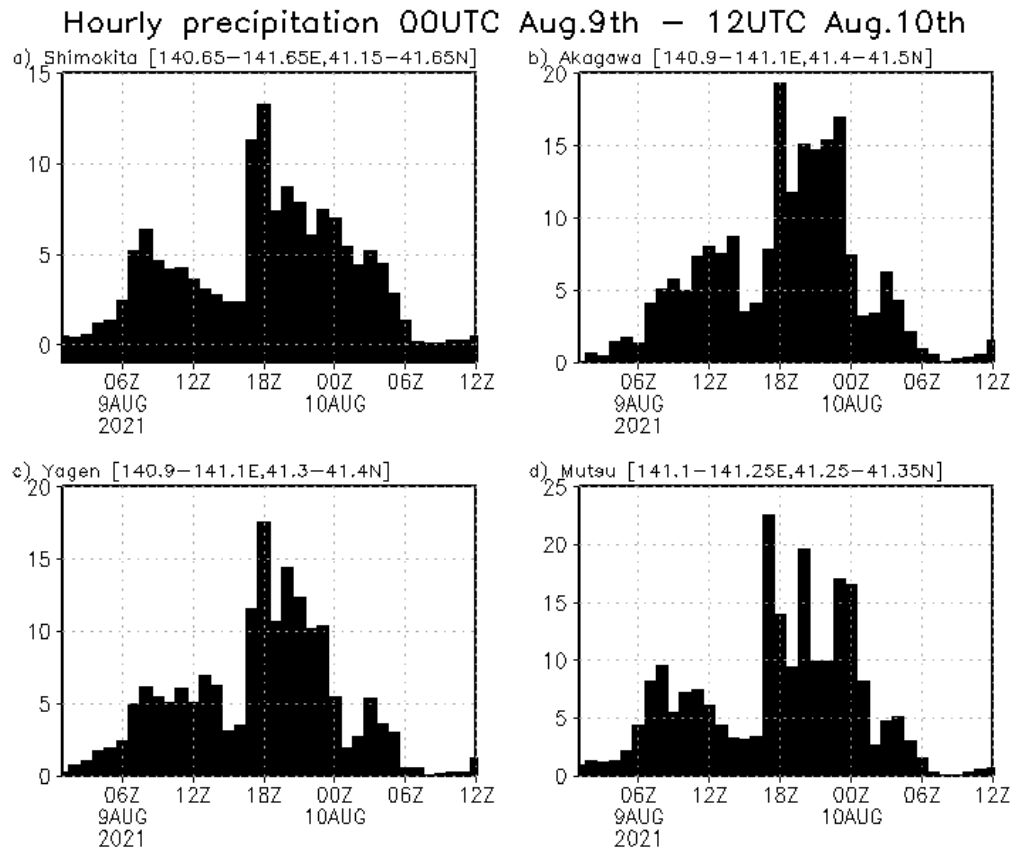


Figure S3: Wind and specific humidity from ERA5.

Wind (vector) and specific humidity (color) at 500 hPa, 700 hPa and 900 hPa for 9 UTC (Peak-1), 15 UTC and 18 UTC (Peak-2) of August 9th, 2021. Data are from ERA5.

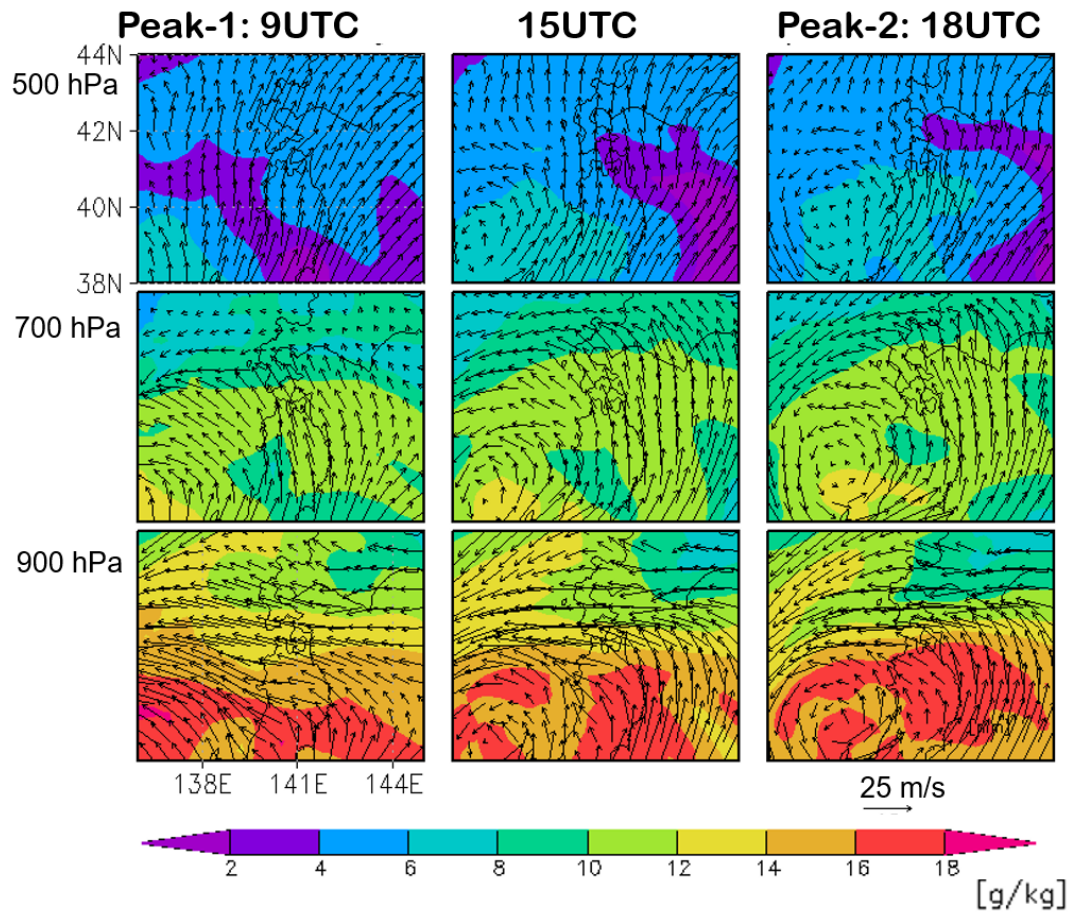


Figure S4: Wind and equivalent potential temperature from MSM.

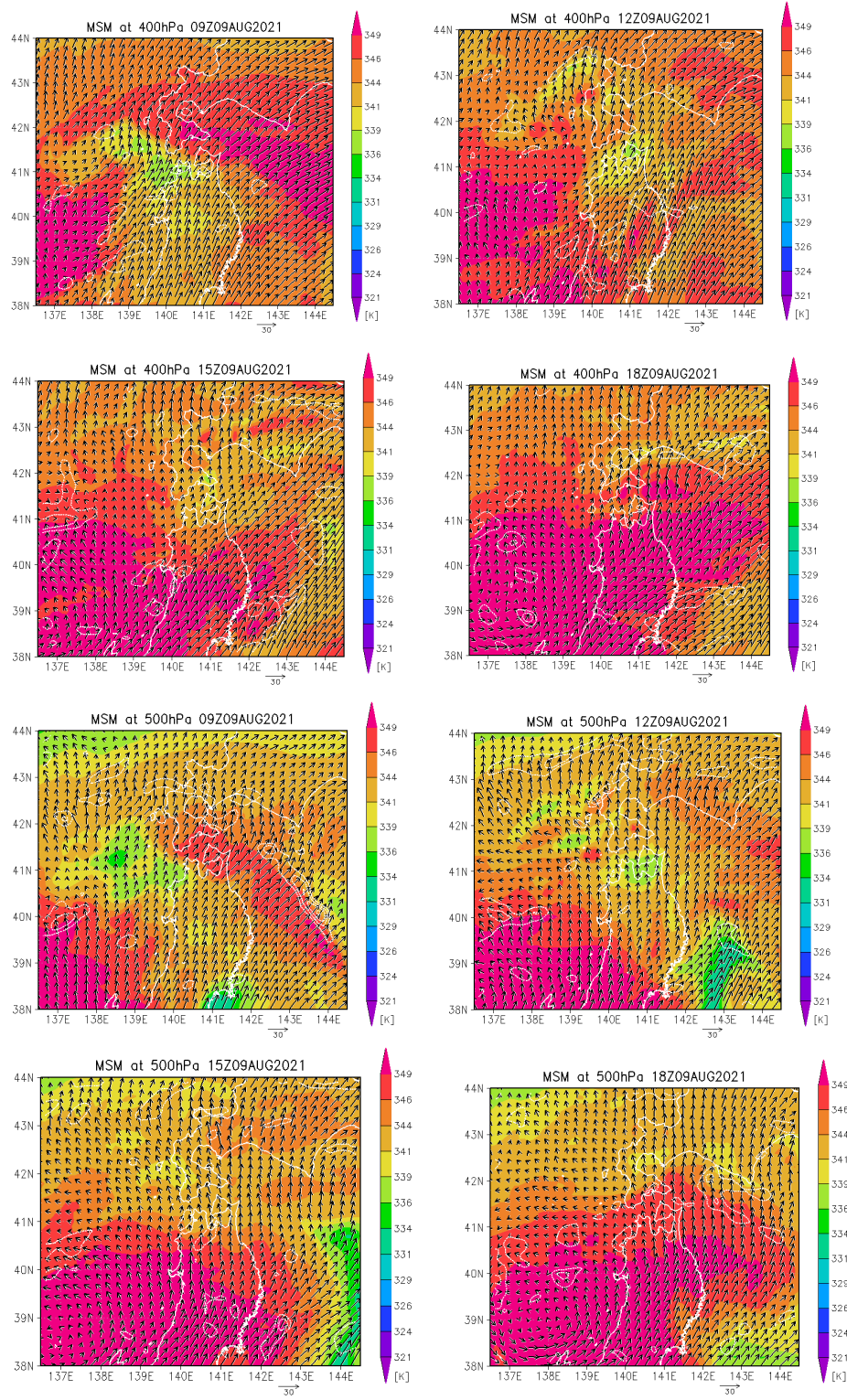


Figure S5 Vertical cross section of moisture flux and precipitation at intermittent time.

