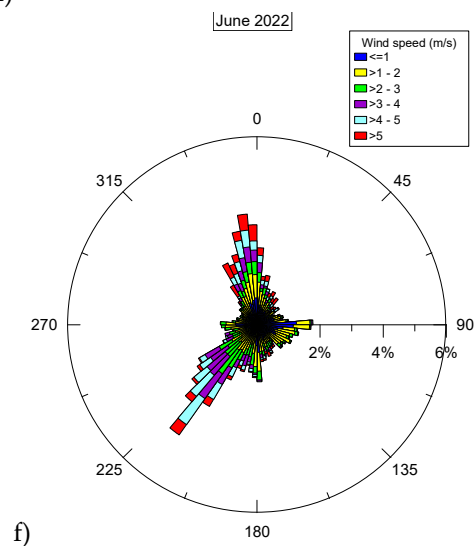
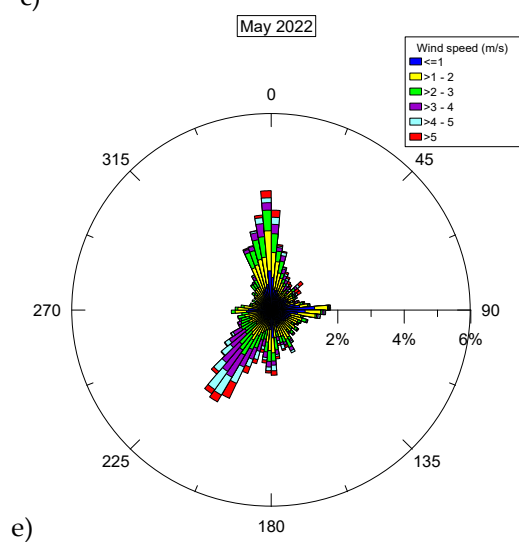
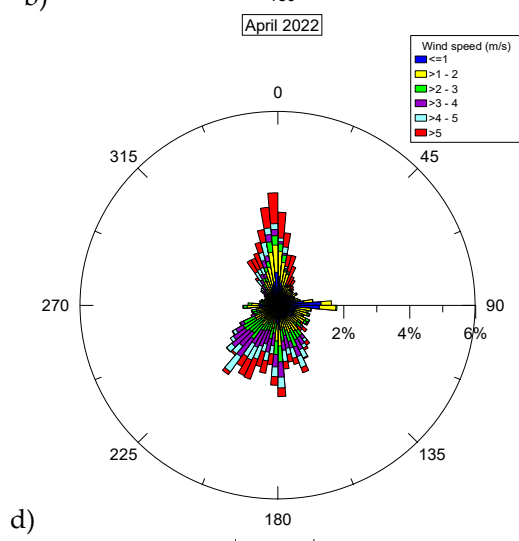
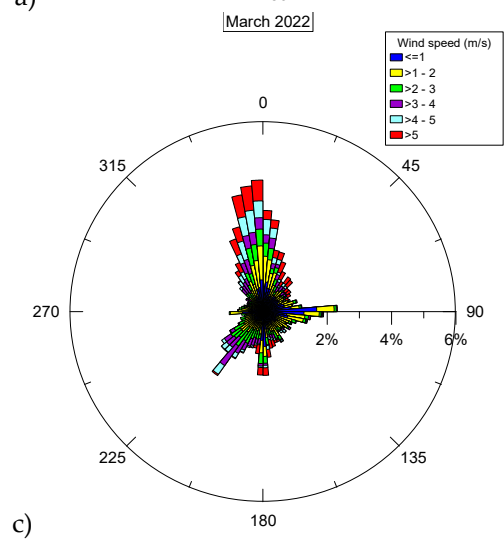
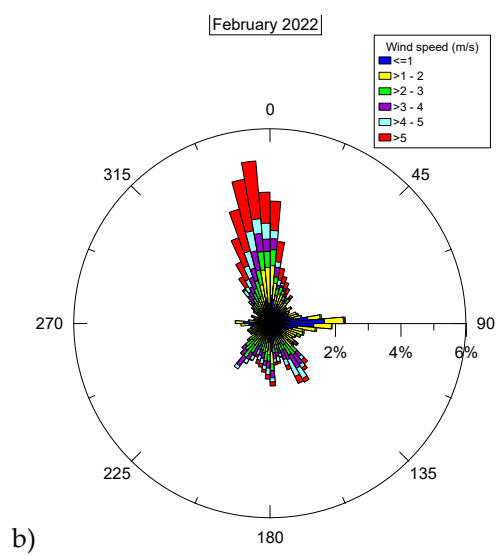
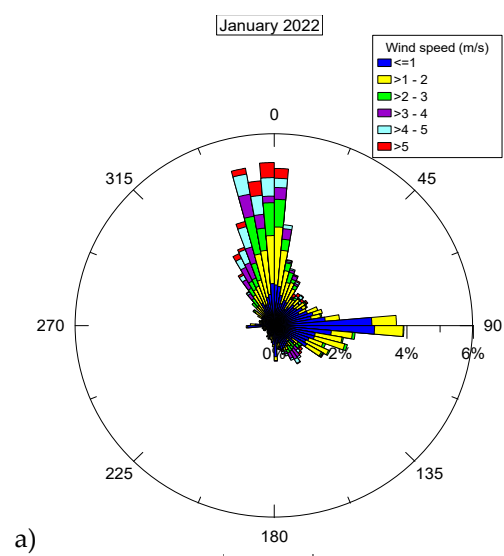


Supplementary Material



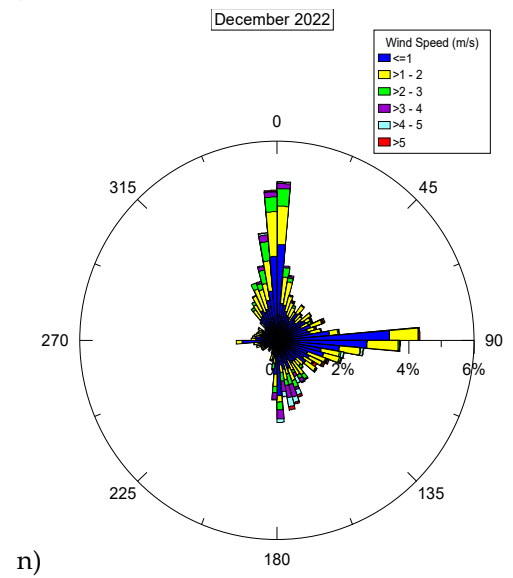
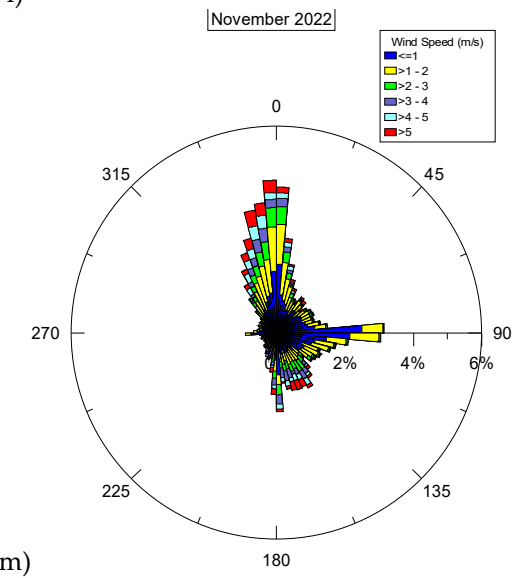
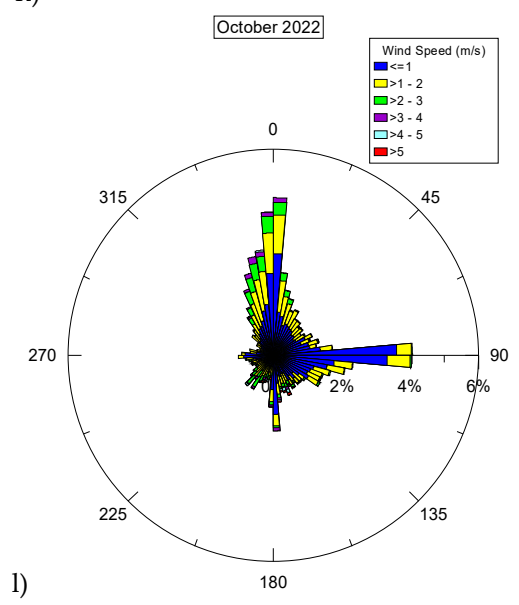
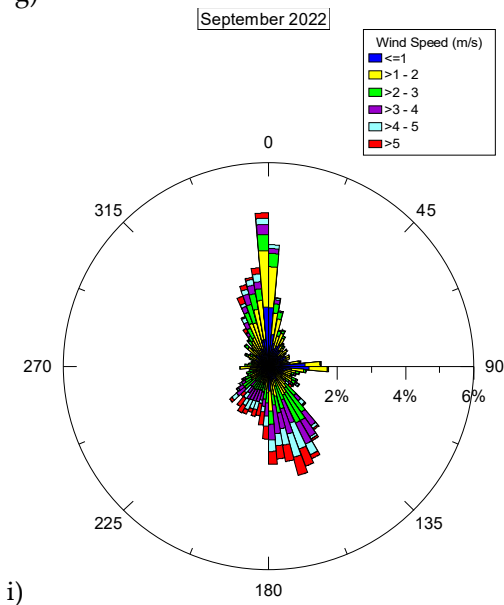
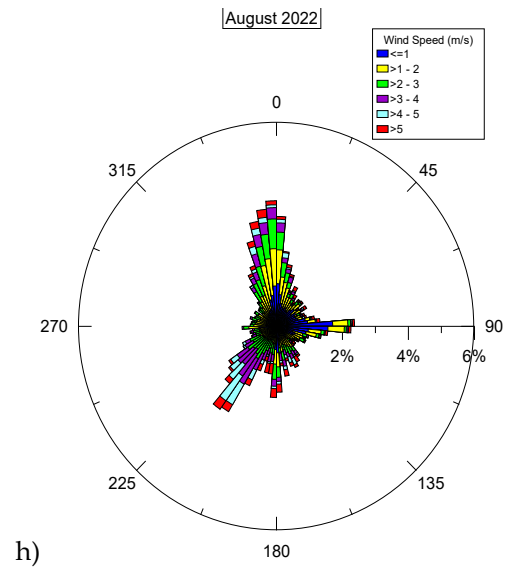
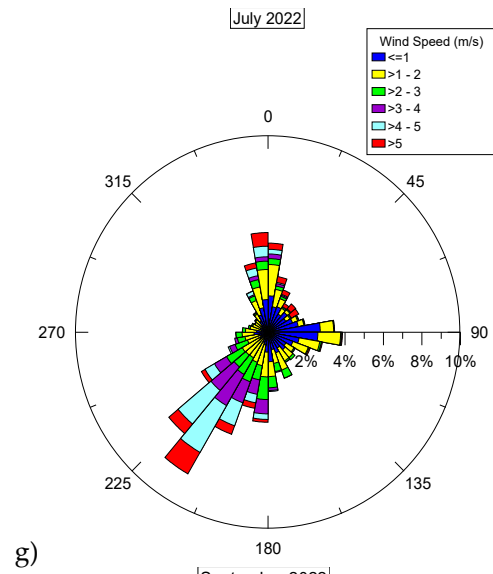


Figure S1. Wind roses of the period investigated plotted on a monthly basis.

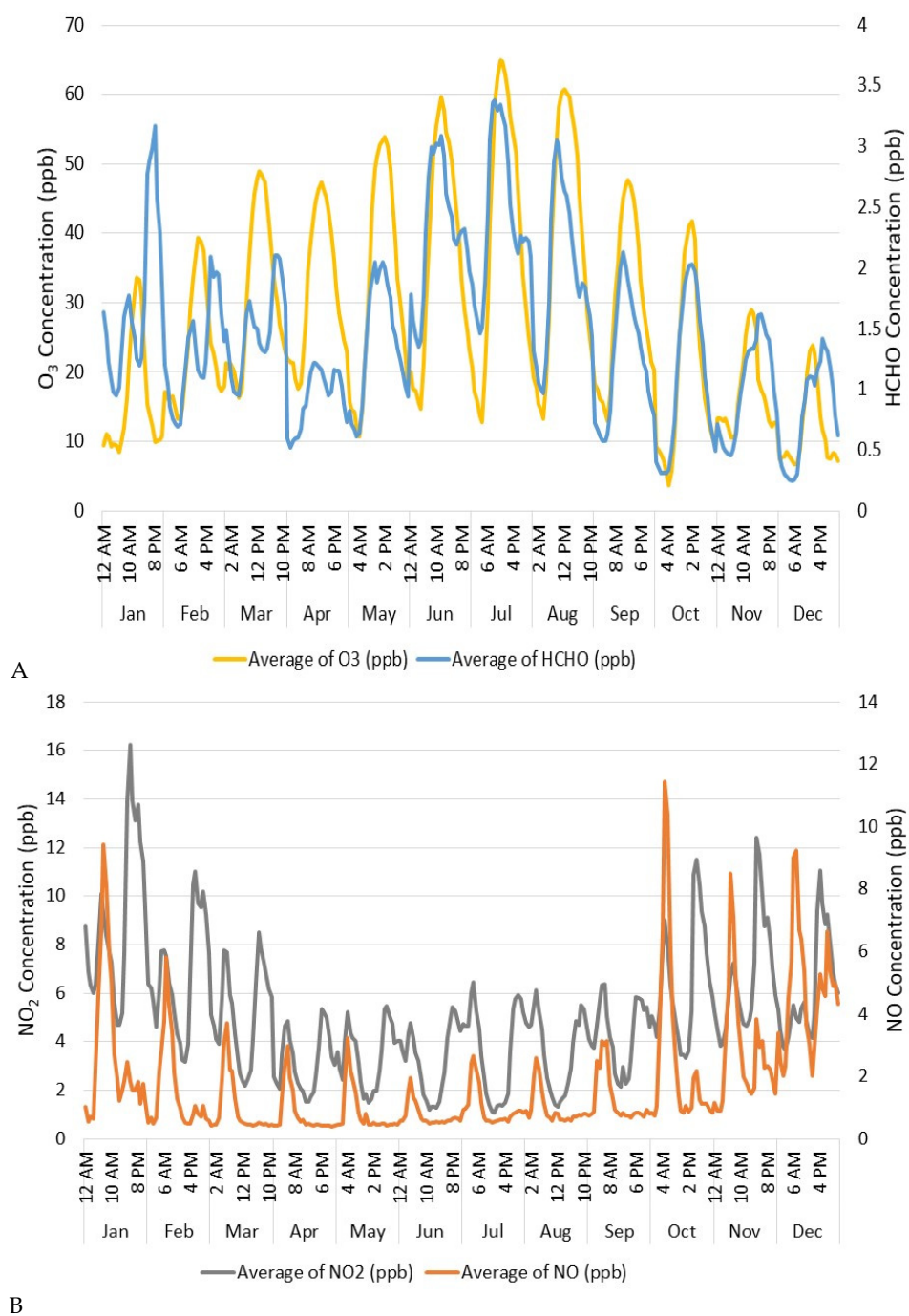
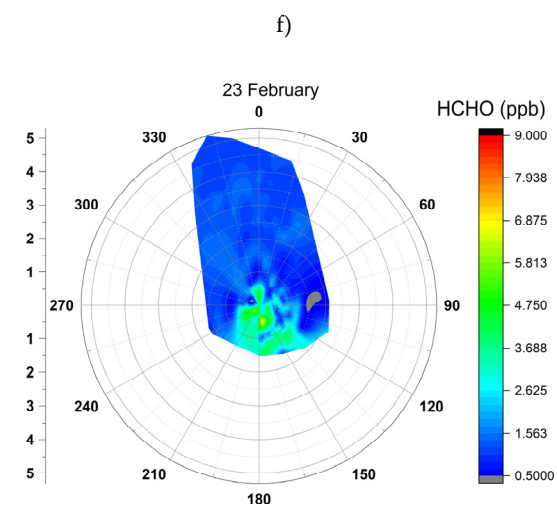
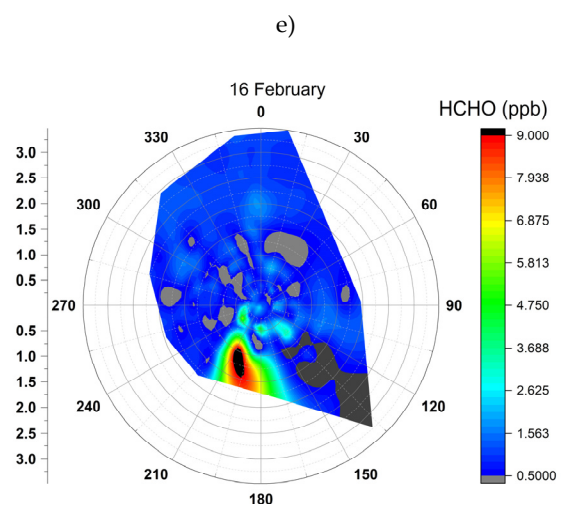
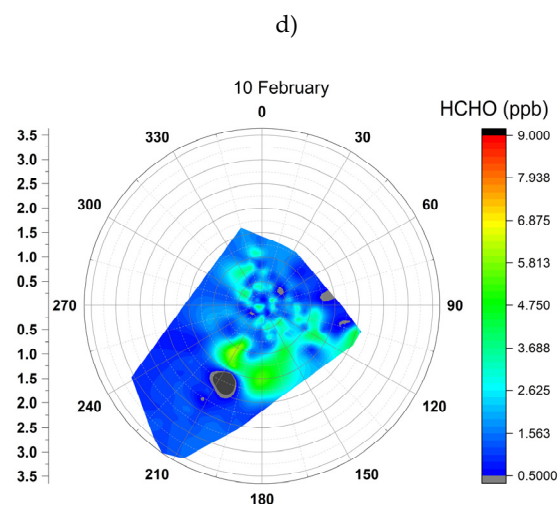
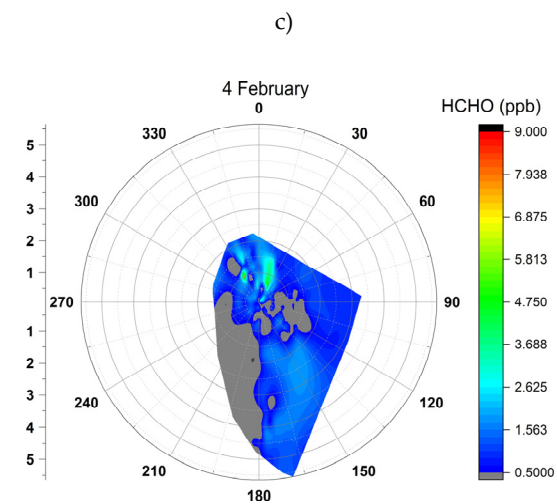
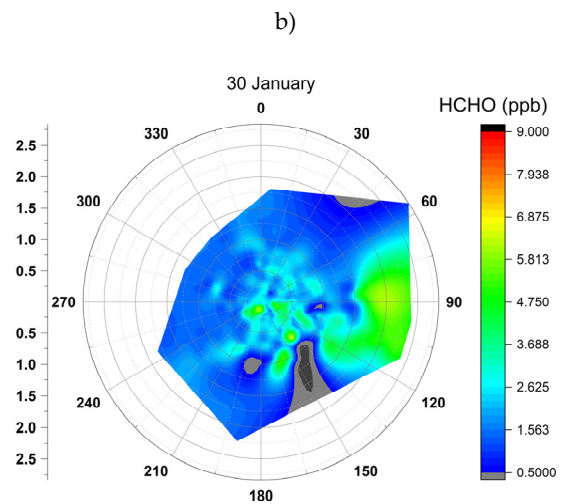
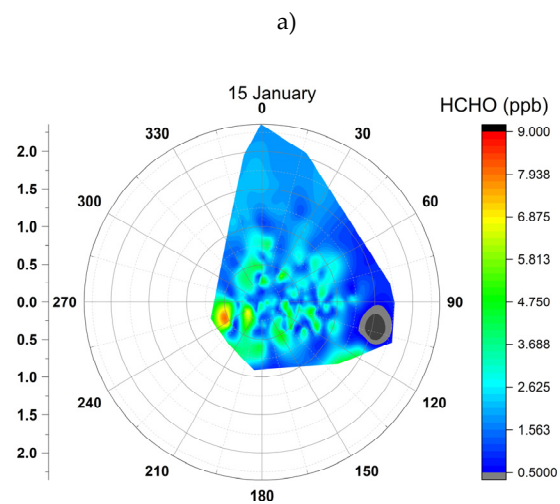
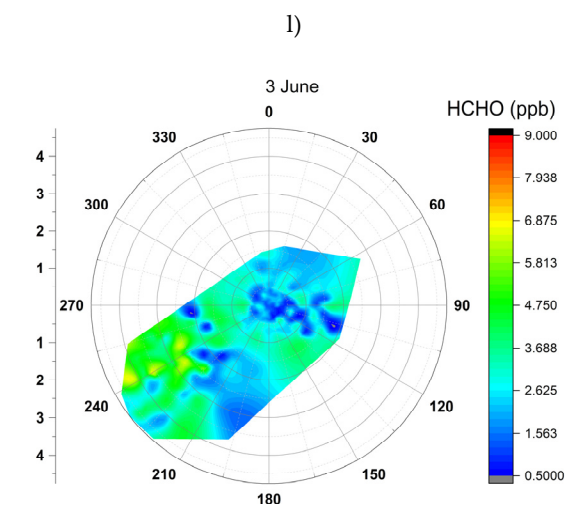
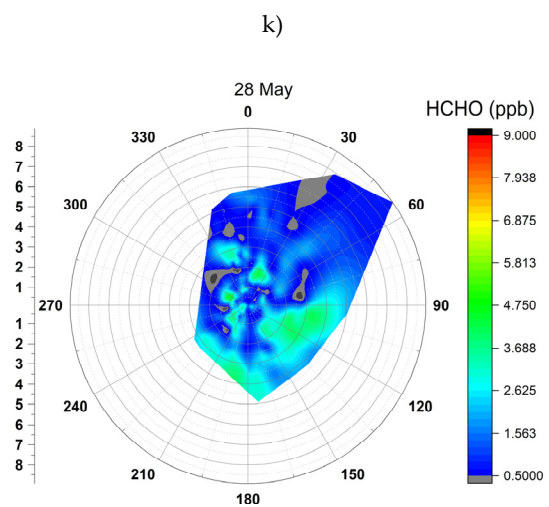
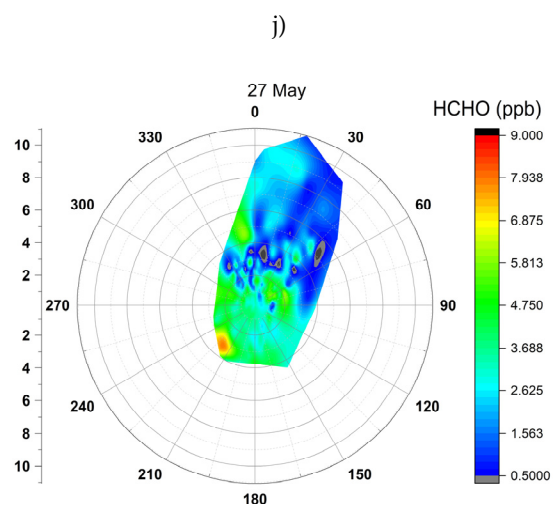
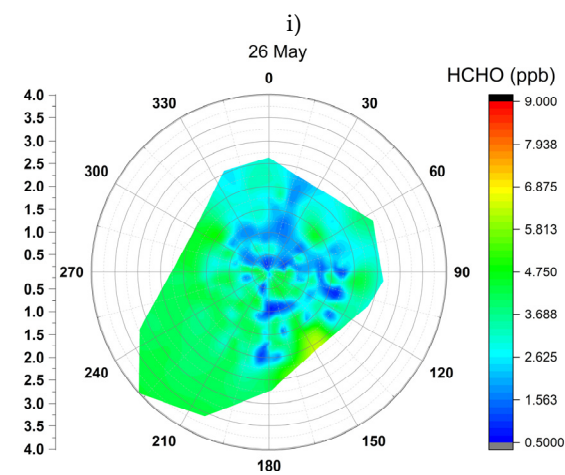
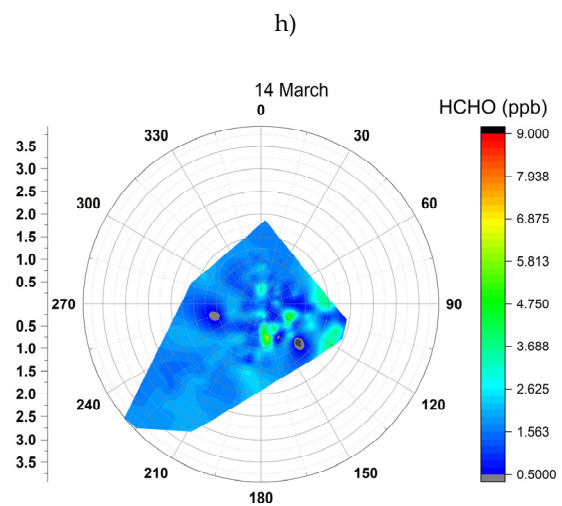
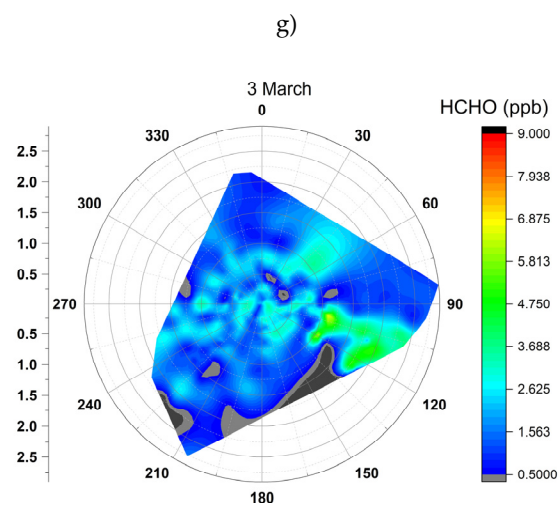
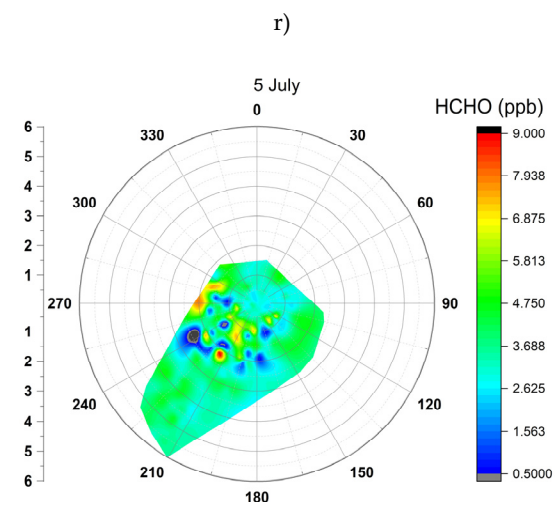
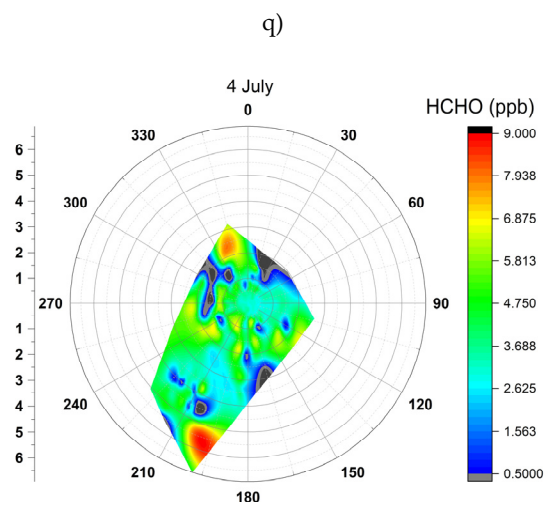
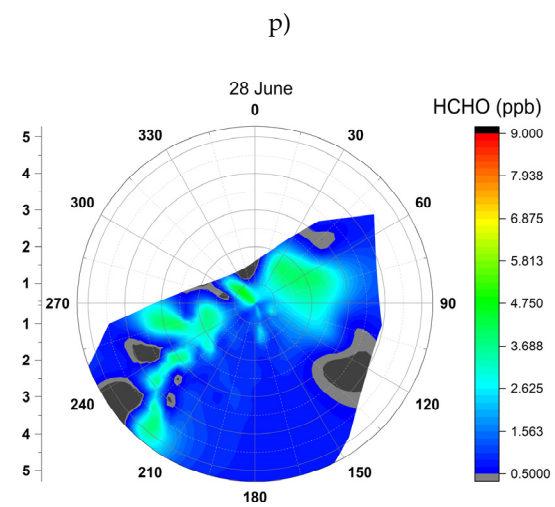
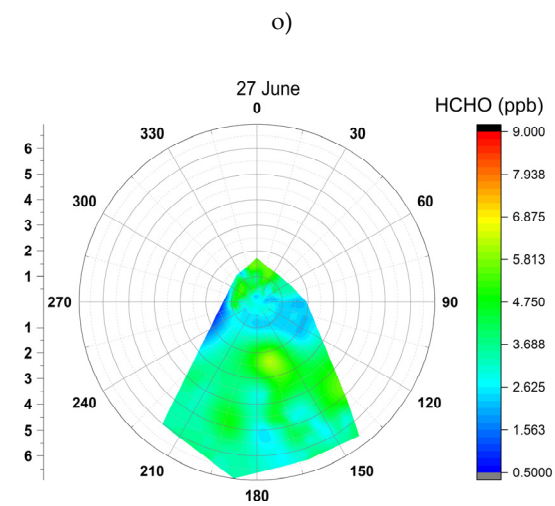
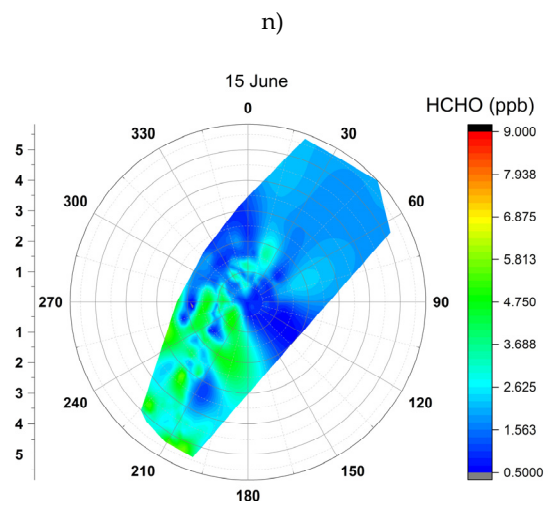
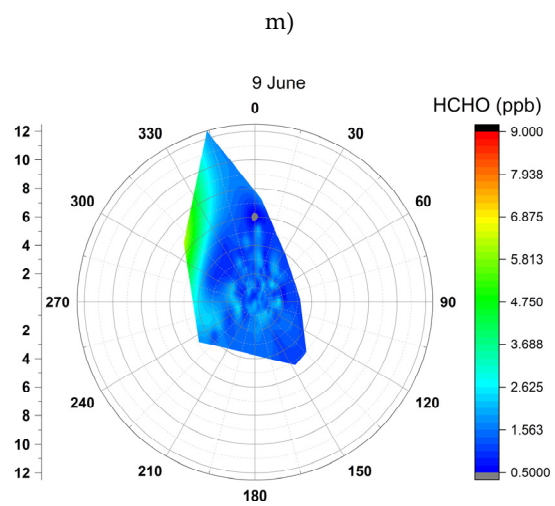
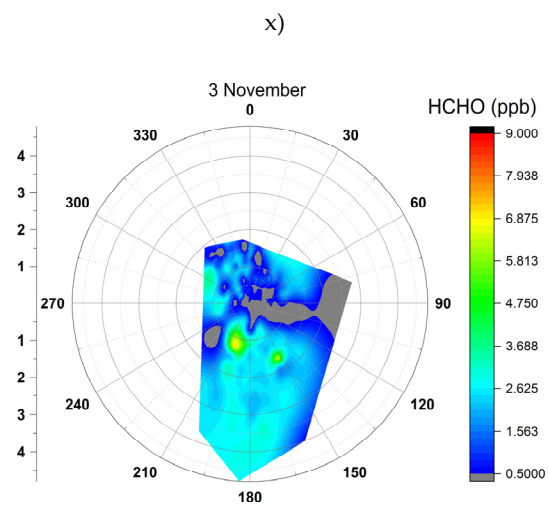
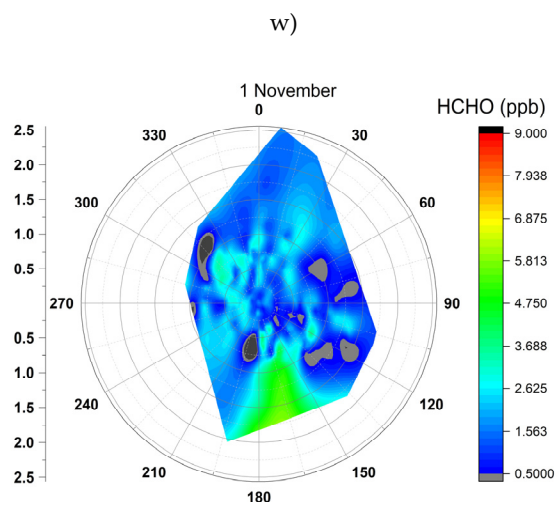
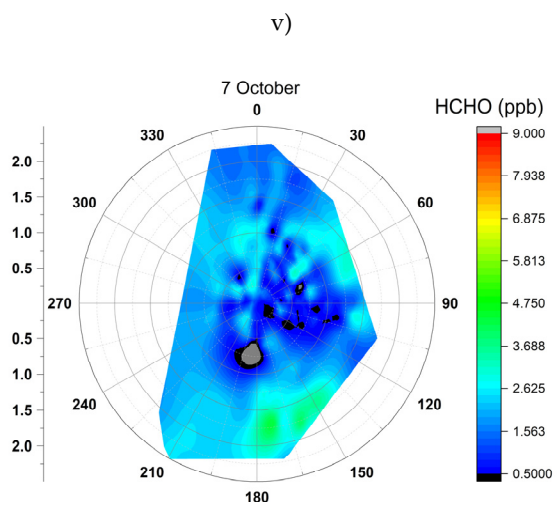
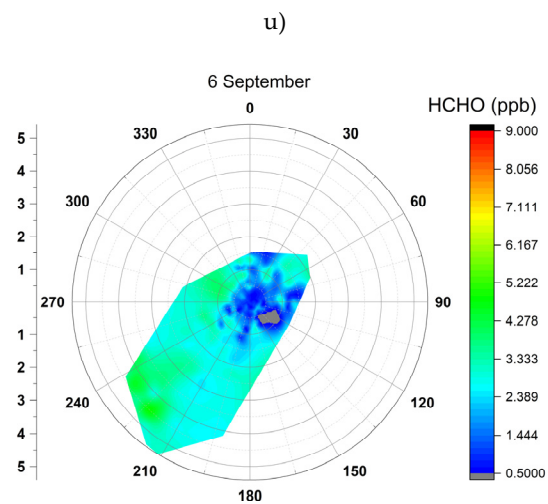
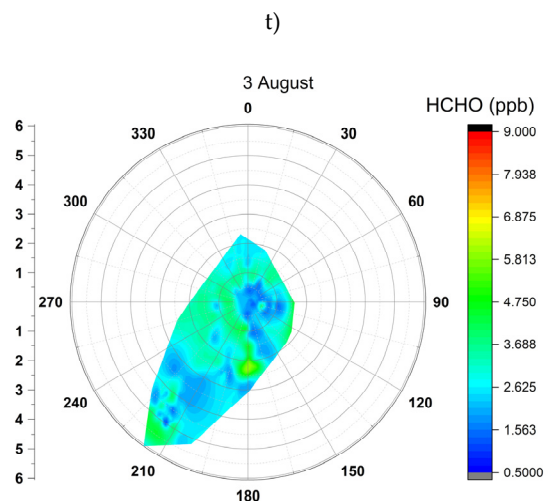
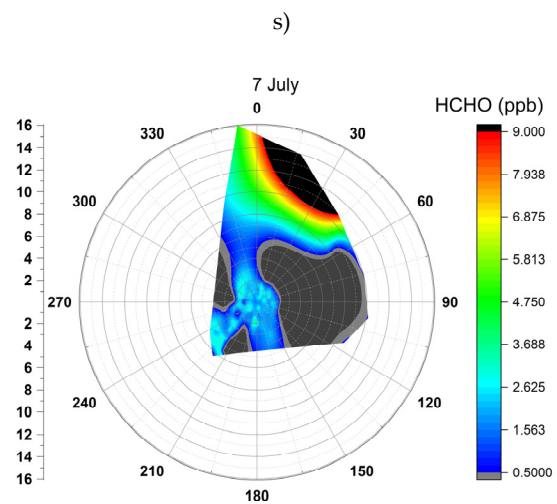


Figure S2. Diurnal variations of the pollutants measured monthly: above HCHO vs O_3 , below NO_2 vs NO.









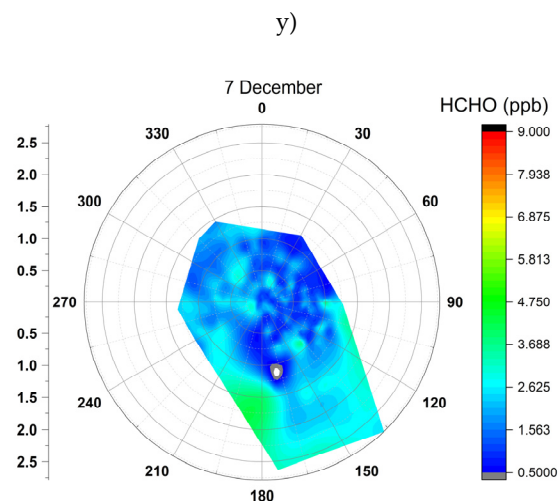
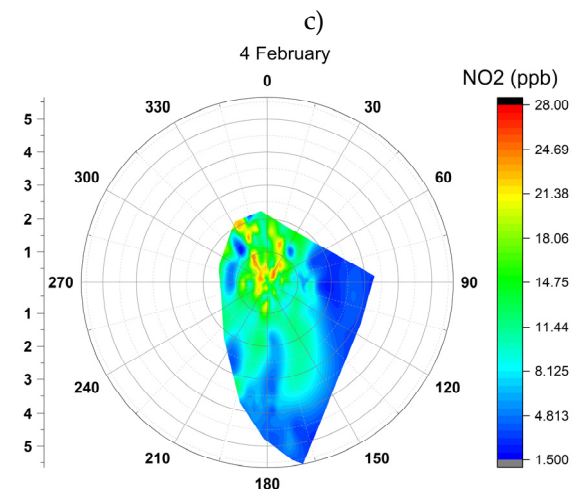
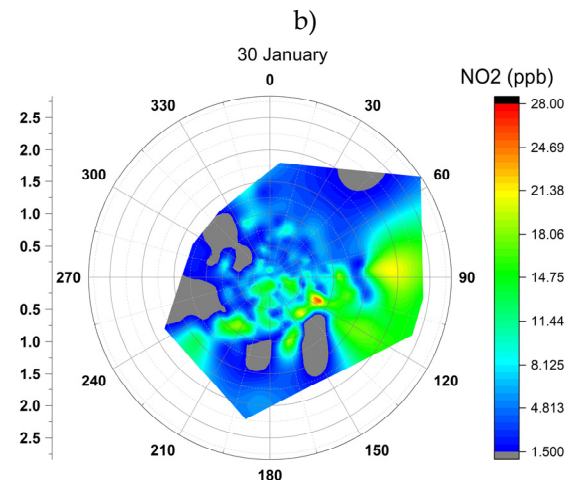
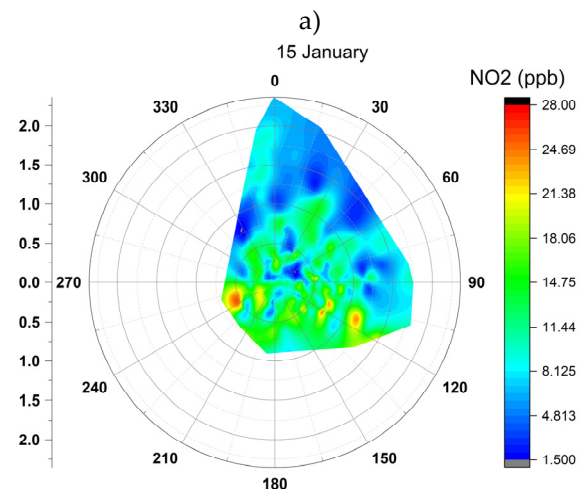
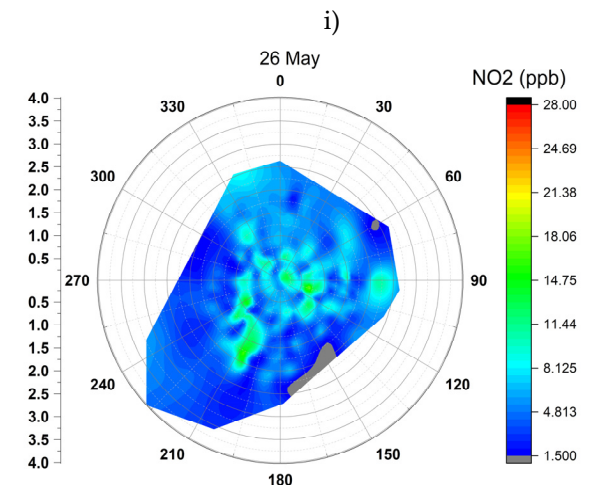
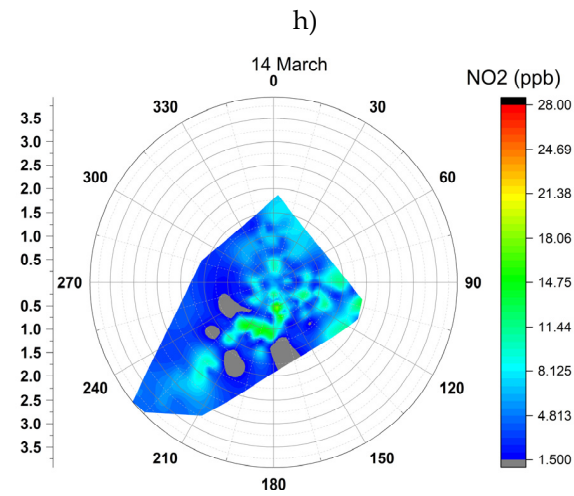
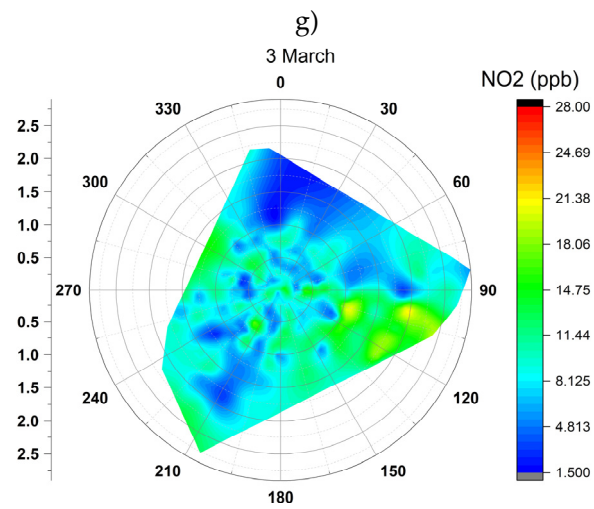
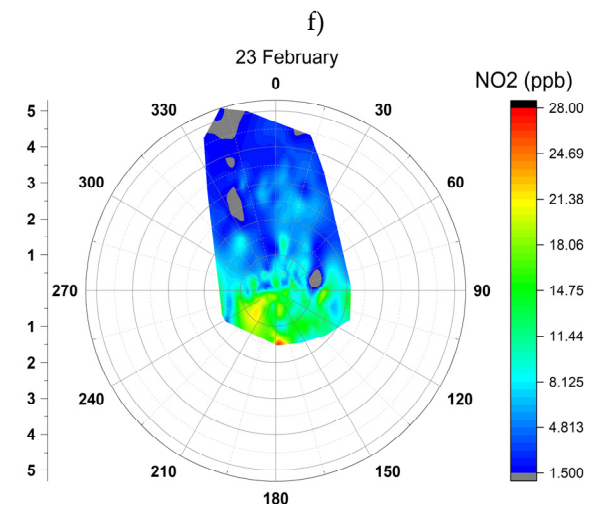
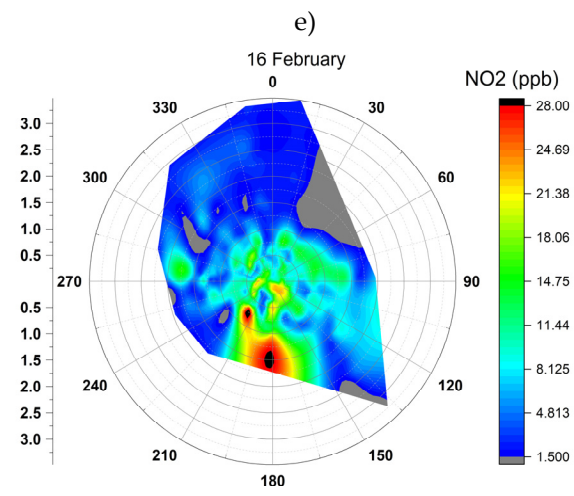
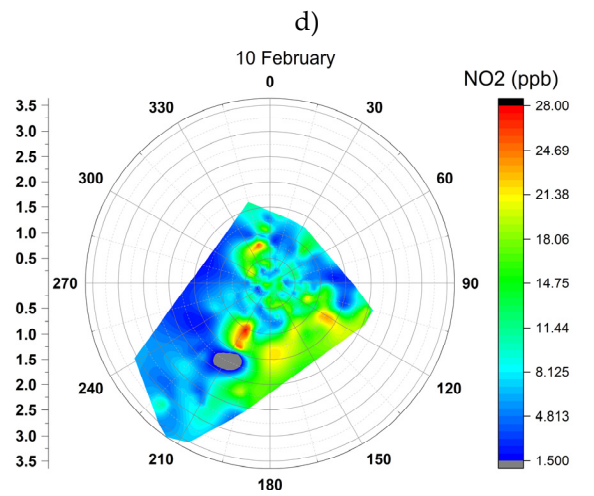
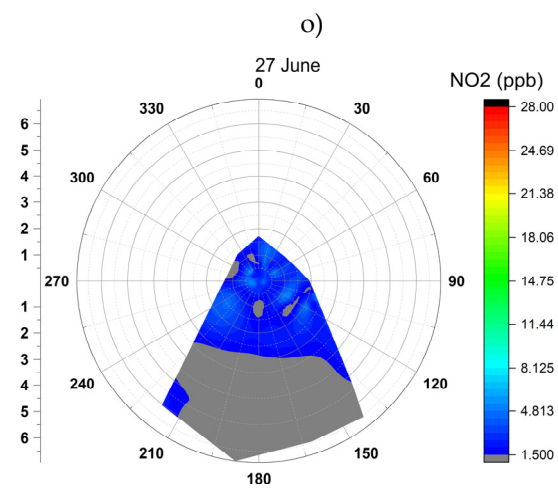
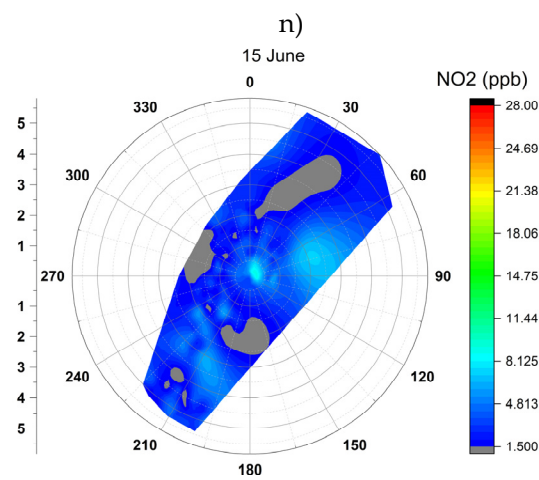
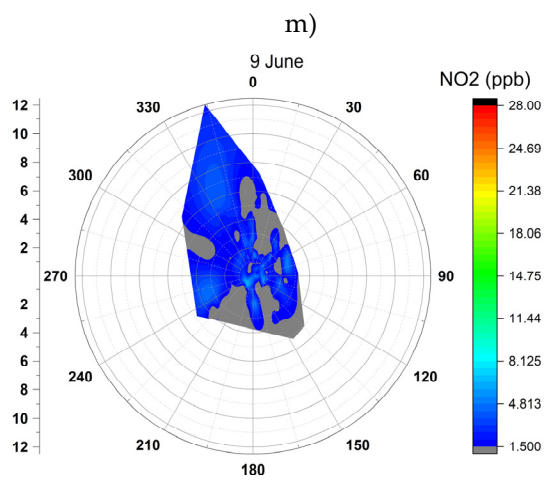
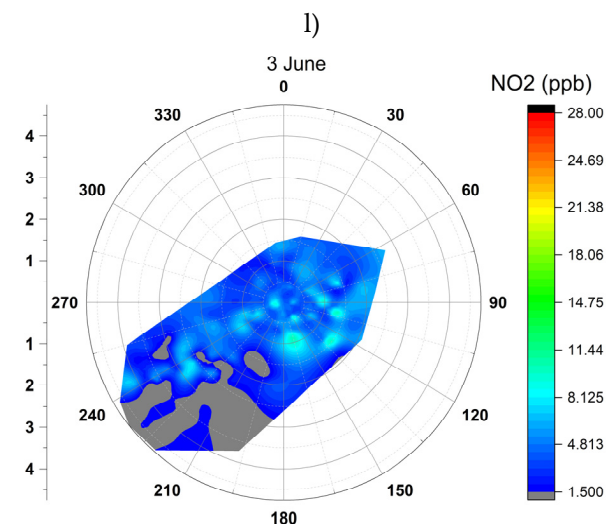
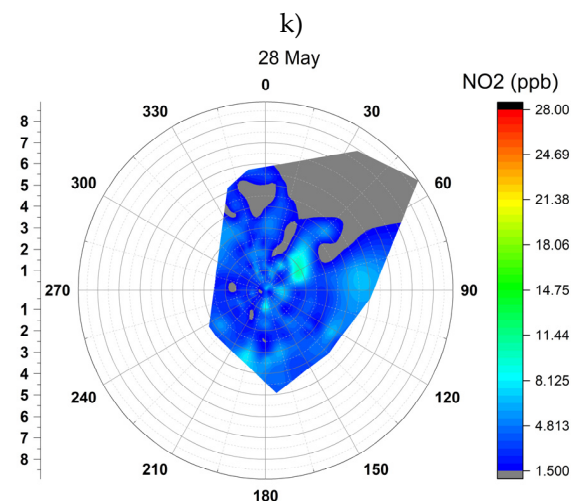
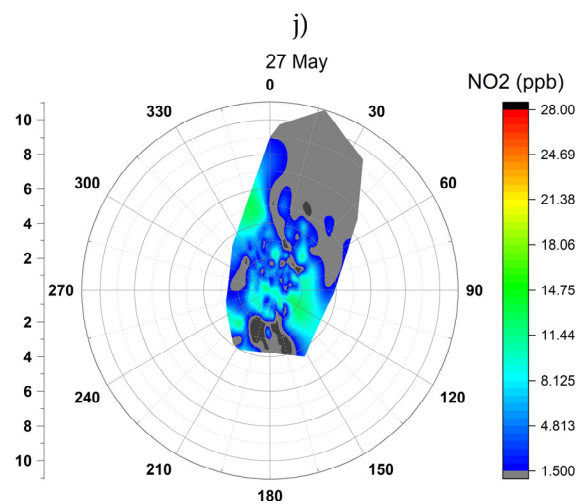
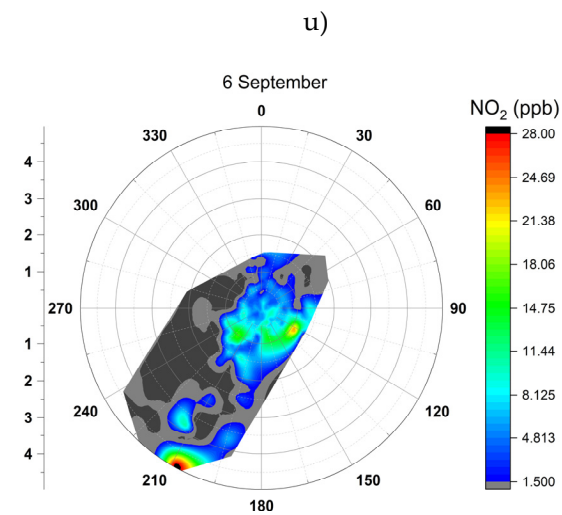
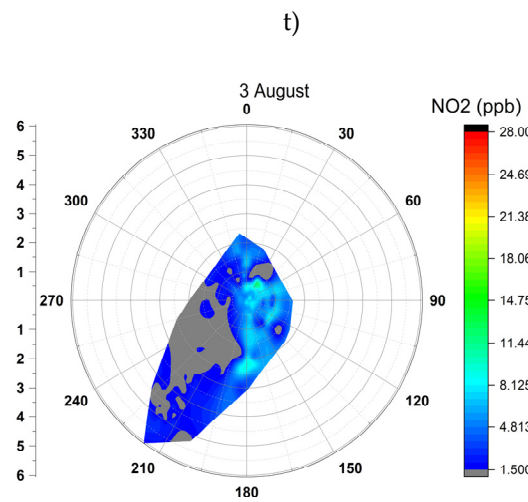
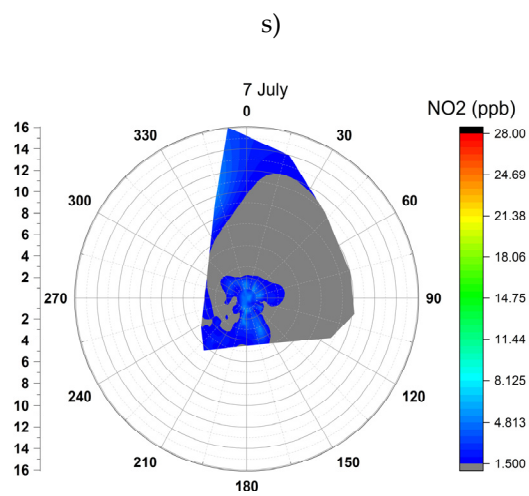
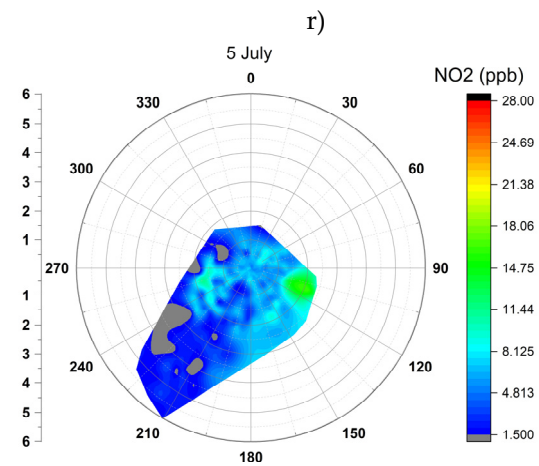
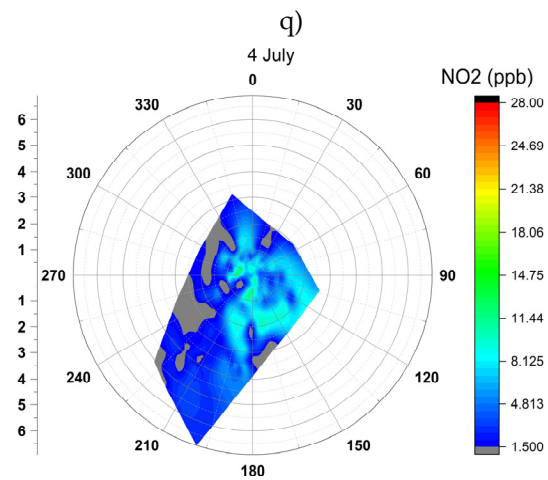
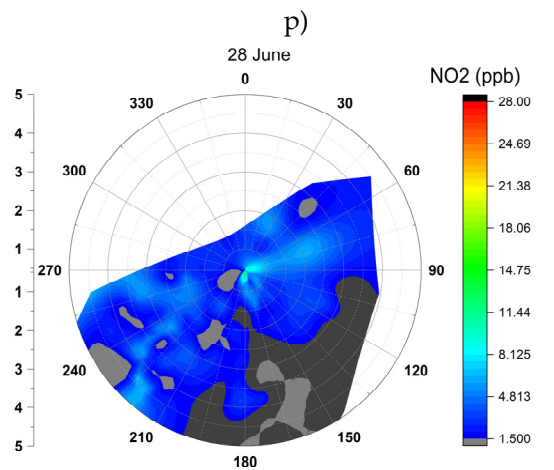


Figure S3. Bivariate polar plots of the days with HCHO peak occurrence vs wind data (on left axis windspeed in m/s).









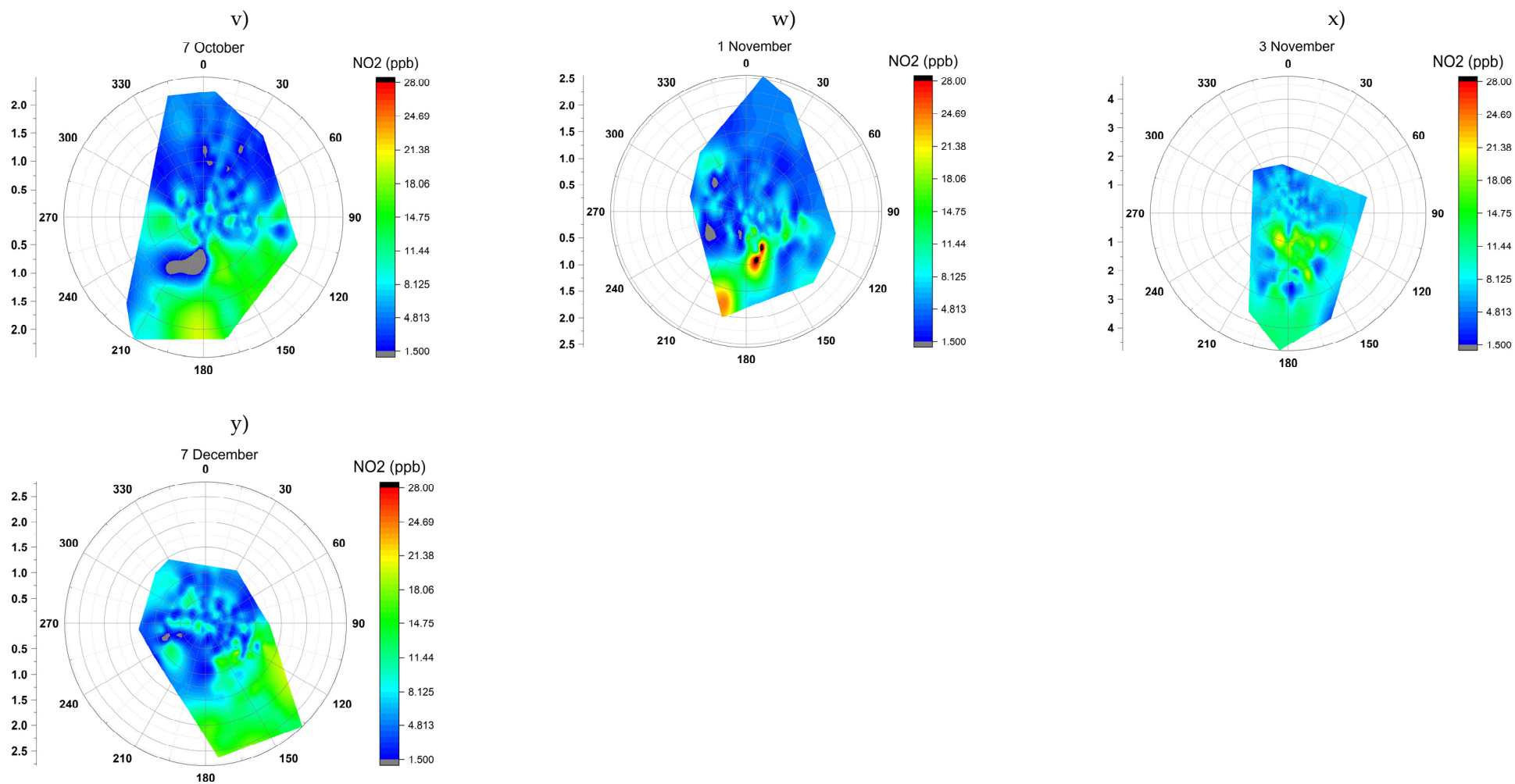


Figure S4. NO₂ Bivariate polar plots of the days with HCHO peak occurrence (on left axis windspeed in m/s).

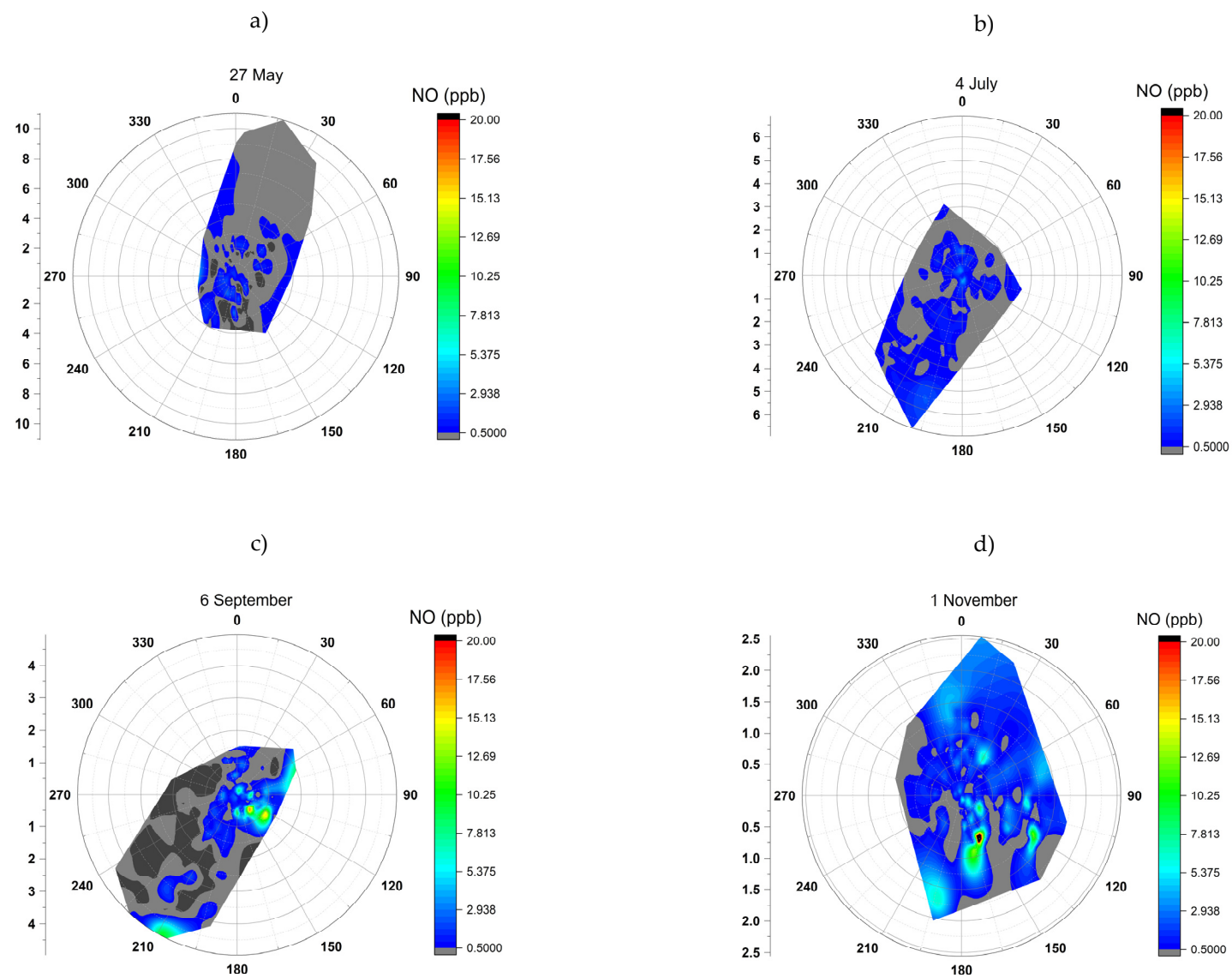


Figure S5. NO bivariate polar plots of some of the days with HCHO peak occurrence (on left axis windspeed in m/s) .

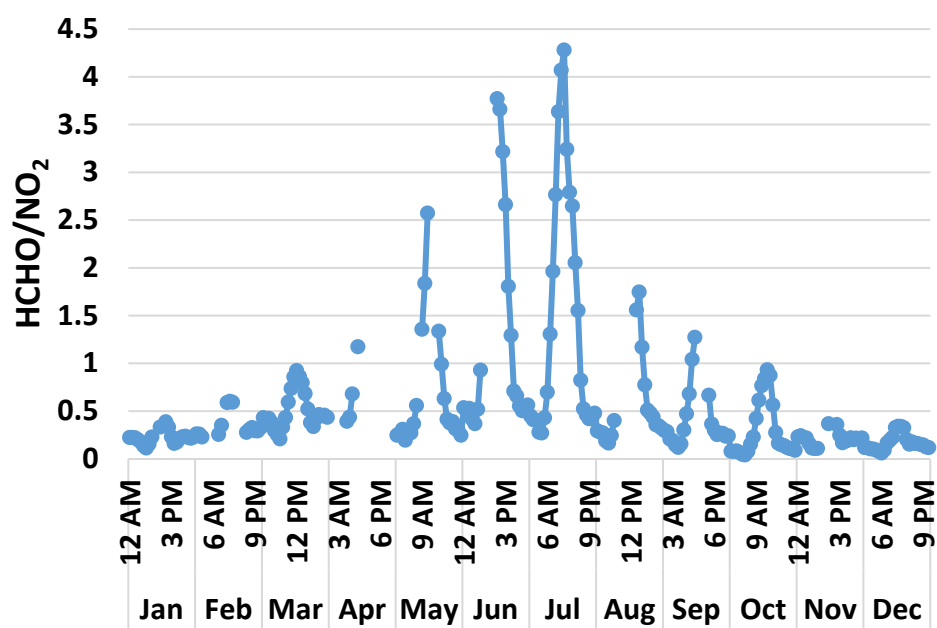


Figure S6. Trends of HCHO/NO₂ ratios hourly averages over the different months of the period investigated