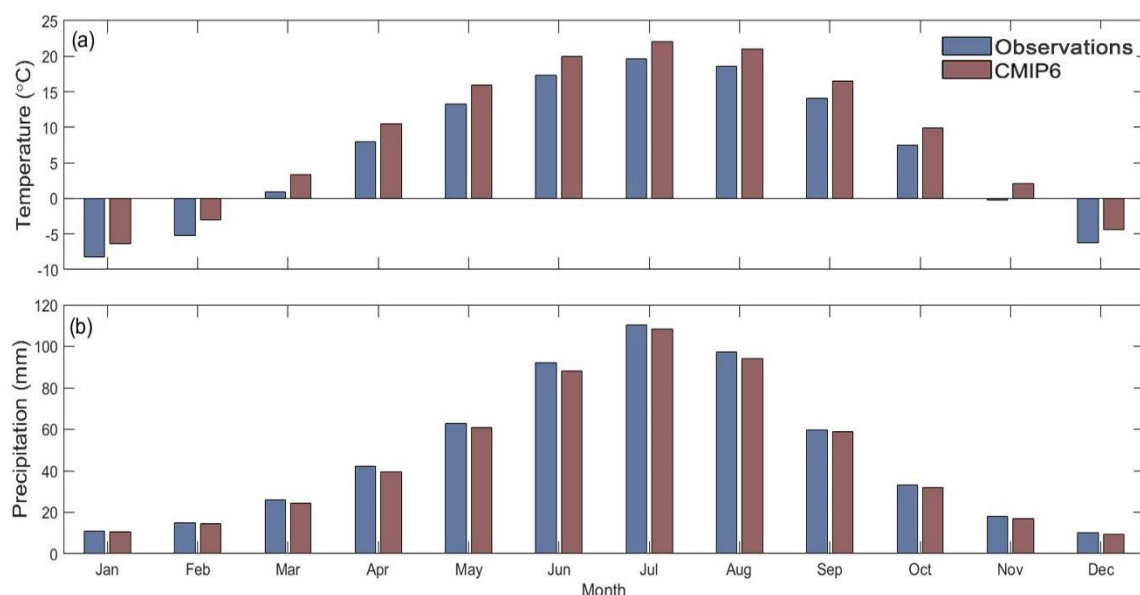
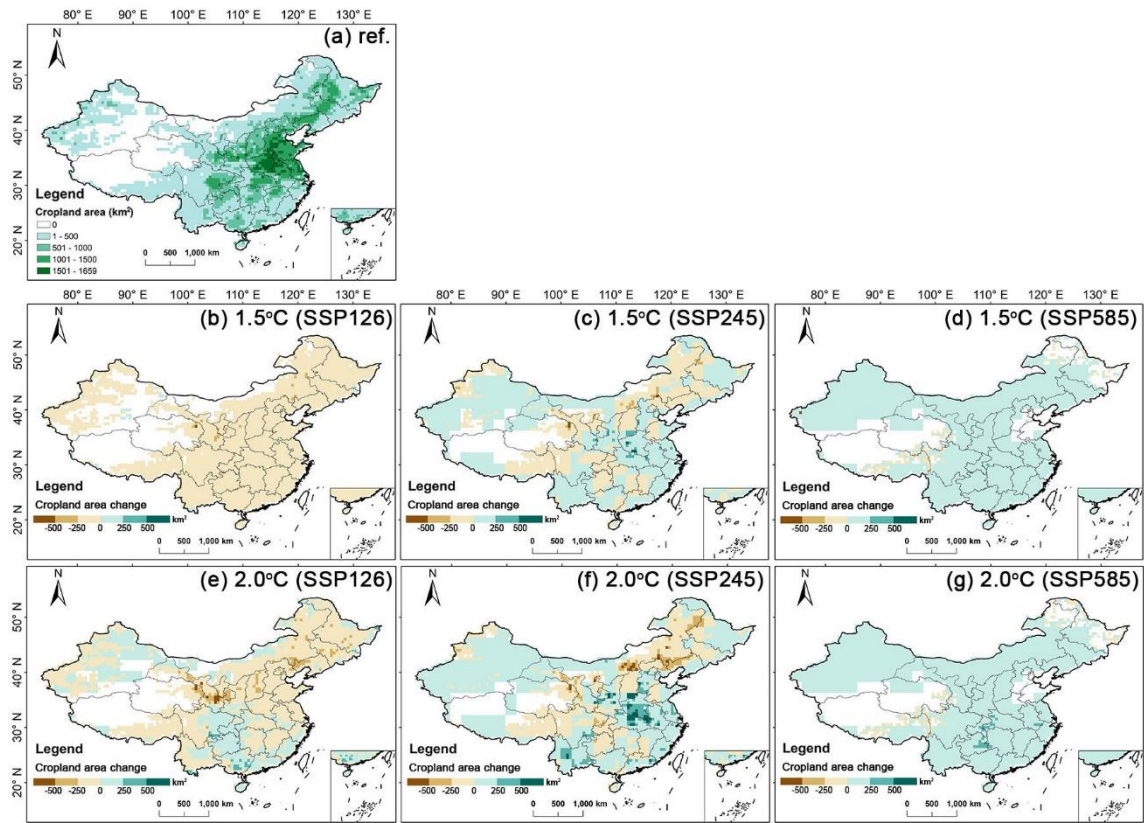


# Supplementary Materials: Increased Exposure of China's Cropland to Droughts under 1.5 °C and 2 °C Global Warming

Lijuan Miao <sup>1,\*</sup>, Jing Zhang <sup>1</sup>, Giri Raj Kattel <sup>1,2,3</sup> and Ran Liu <sup>1</sup>



**Figure S1.** Comparison of multi-year monthly average temperature (a) and total precipitation (b) over China based on climate observations and CMIP6 outputs for 1961-2014.



**Figure S2.** Spatial distribution of cropland area (km<sup>2</sup>) for the reference period (1995-2014) (a), the 1.5°C global warming period (b-d), and the 2°C global warming period (e-g).