

Supplementary Materials: An Application of the LCZ Approach In Surface Urban Heat Island Mapping in Sofia, Bulgaria

Stelian Dimitrov *, Anton Popov and Martin Iliev

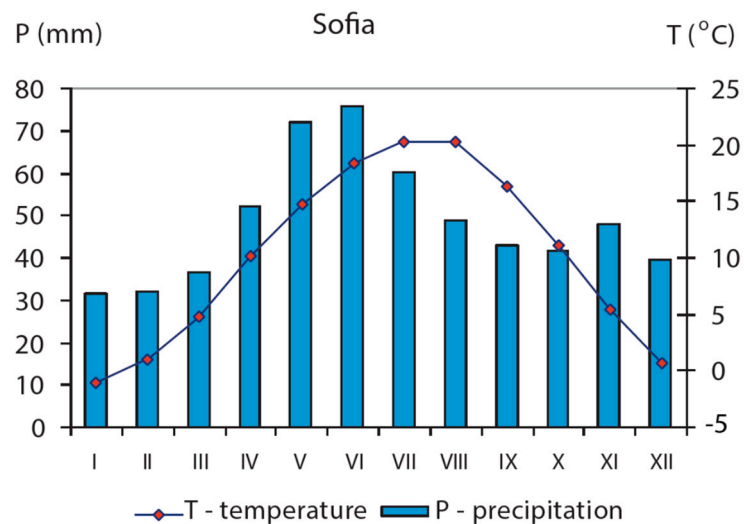


Figure S1. Climograph of monthly averages of climate data—temperature and precipitation in Sofia (1896–2018).

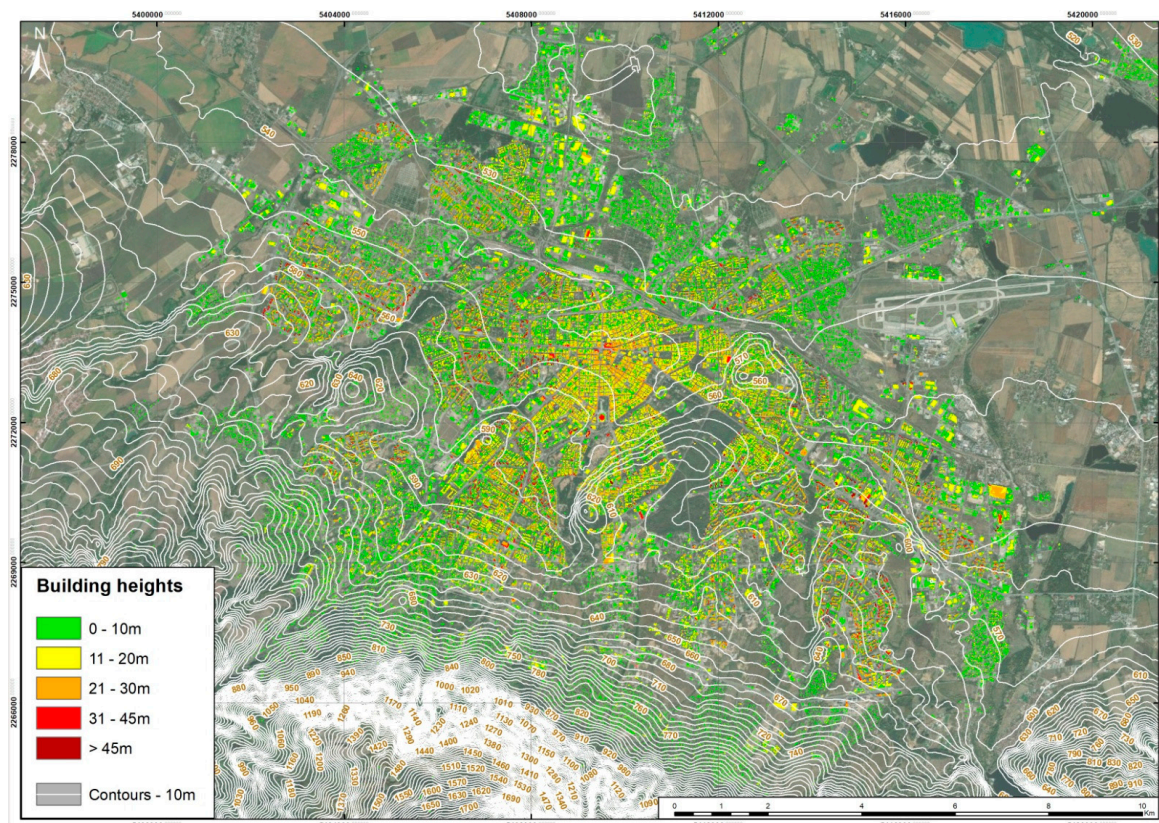


Figure S2. Building heights (based on Urban atlas—Building Height 2012, <https://land.copernicus.eu/local/urban-atlas/building-height-2012>, accessed on 18 October 2021).