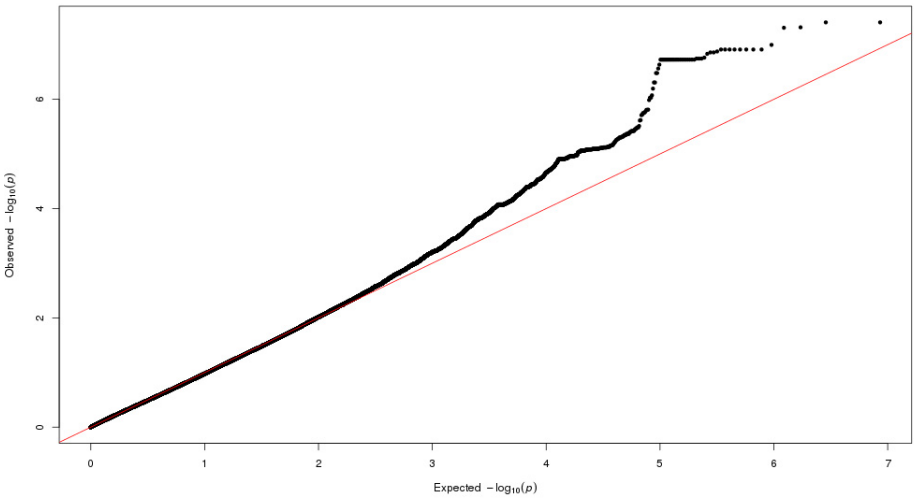
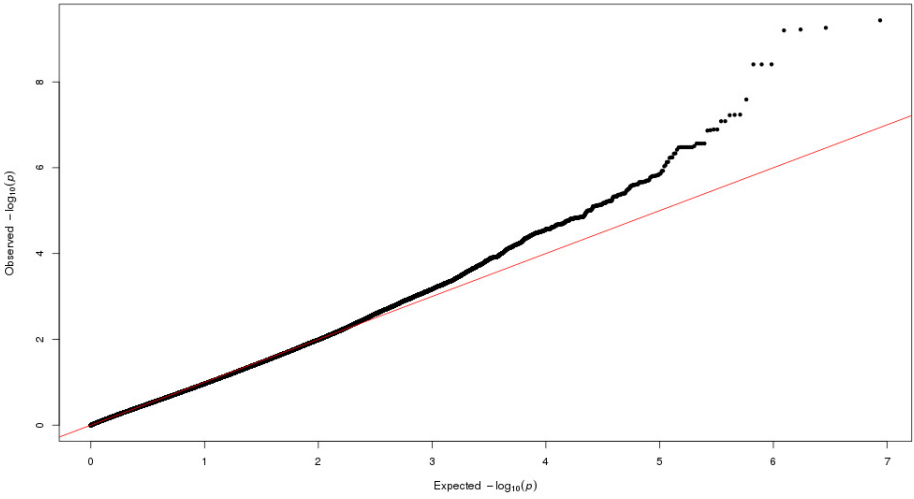


vQTL of dfs in the priamry dentition (IFS)



vQTL of dfs in the priamry dentition (COHRA1)



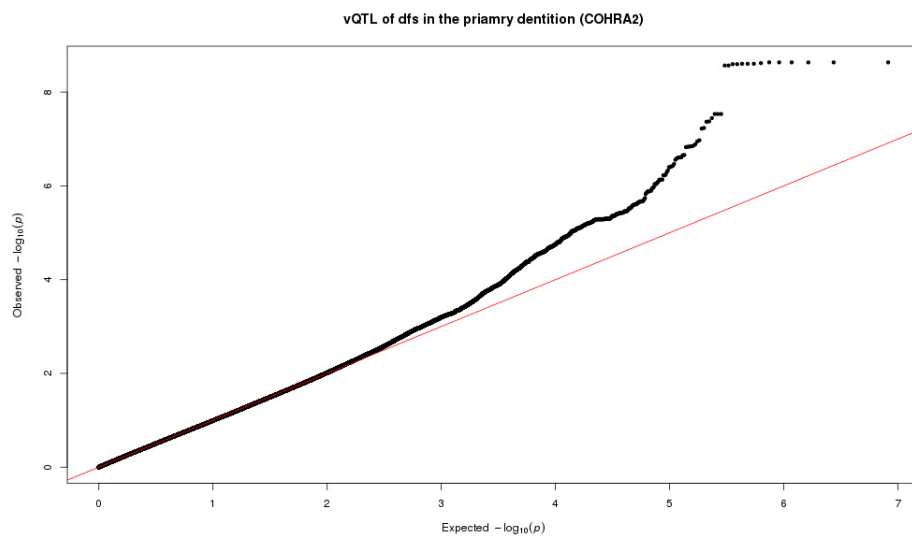


Figure S1 Quantile-quantile plot for genome-wide vQTL analysis of dfs in IFS, COHRA1, and COHRA2

The genomic inflation factors were 1.00, 1.02, and 1.03 in IFS, COHRA1, and COHRA2, repectively.