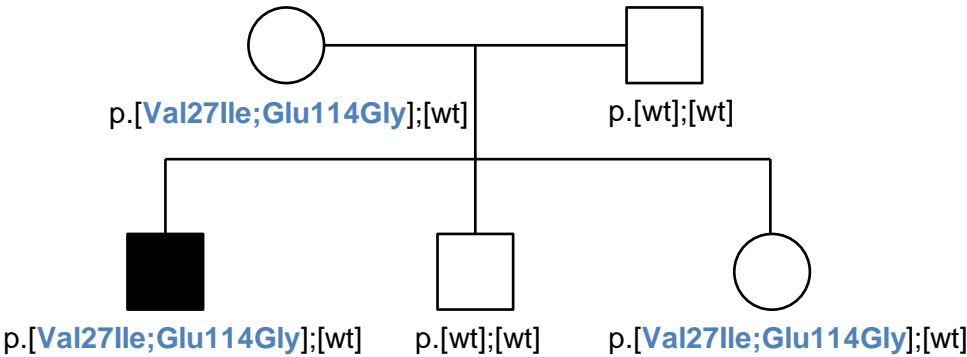


Figure S1. Verification of *cis*-configuration of variants c.79G>A (p.Val27Ile) and c.341A>G (p.Glu114Gly).

A. Verification of *cis*-configuration of variants c.79G>A (p.Val27Ile) and c.341A>G (p.Glu114Gly) by analysis of pedigrees: transmission of allele p.[Val27Ile;Glu114Gly].



B. An example sequencing trace showing variants c.79G>A (p.Val27Ile) and c.341A>G (p.Glu114Gly) in *cis*-configuration. Conjoint presence of these variants in an examined clone confirmed their *cis*-configuration.

