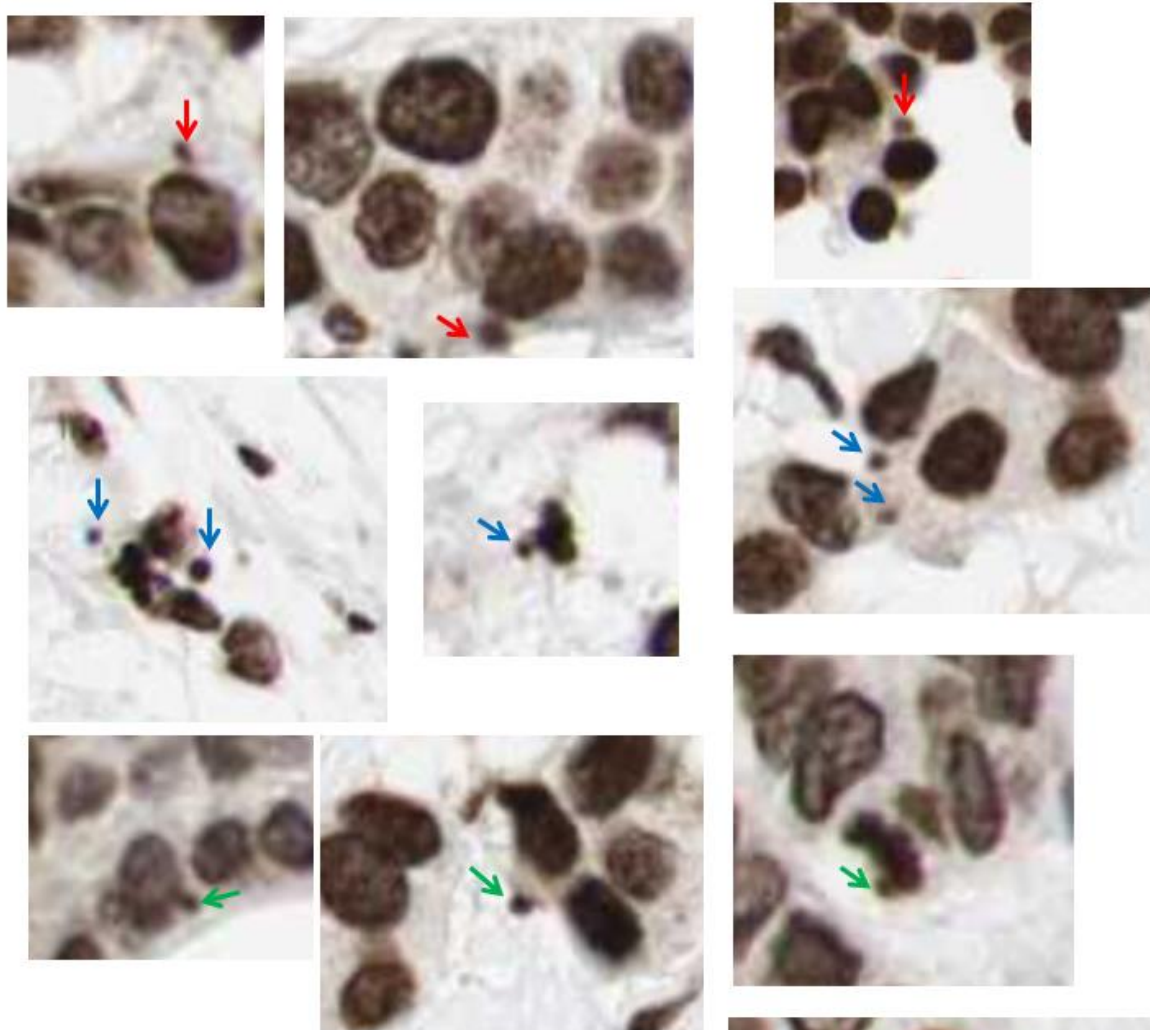


Supplementary Figure 1: Immunofluorescence demonstrates discrete SRC-3 cytoplasmic blebs in ER+ breast cancer cells. In these examples multiple juxtanuclear blebs are seen in MCF-7 cells while fewer T47-D and ZR-75-1 cells displayed blebbing (with a frequency of 1 bleb per positive cell) . IF intensity was enhanced in T47-D and ZR-75-1 relative to MCF-7 cells to better visualize SRC-3.



Supplementary Figure 1: Examples of anti-SRC-3 positive extranuclear budding structures in IHC of human breast cancers expressing high levels of SRC-3 indicated by arrows. Red arrows; id:1882 (medium staining/lobular ca) Blue arrows; id:3257 (high staining/ductal ca) Green arrows; id:2428 (high staining/ductal ca)

