

Supplementary Figures

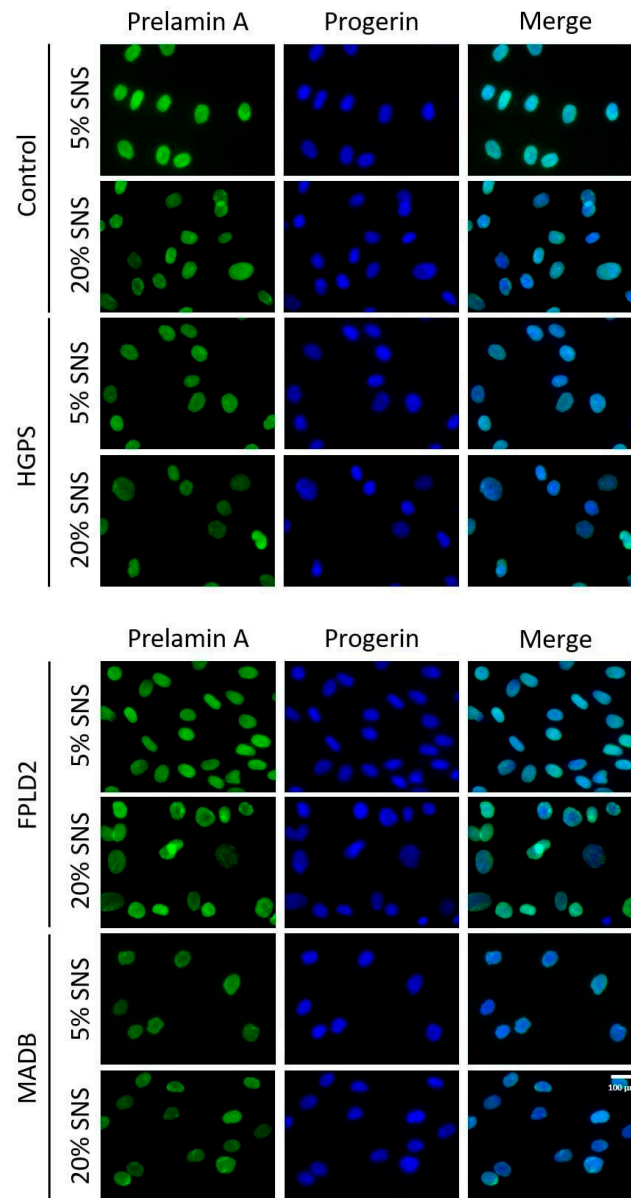
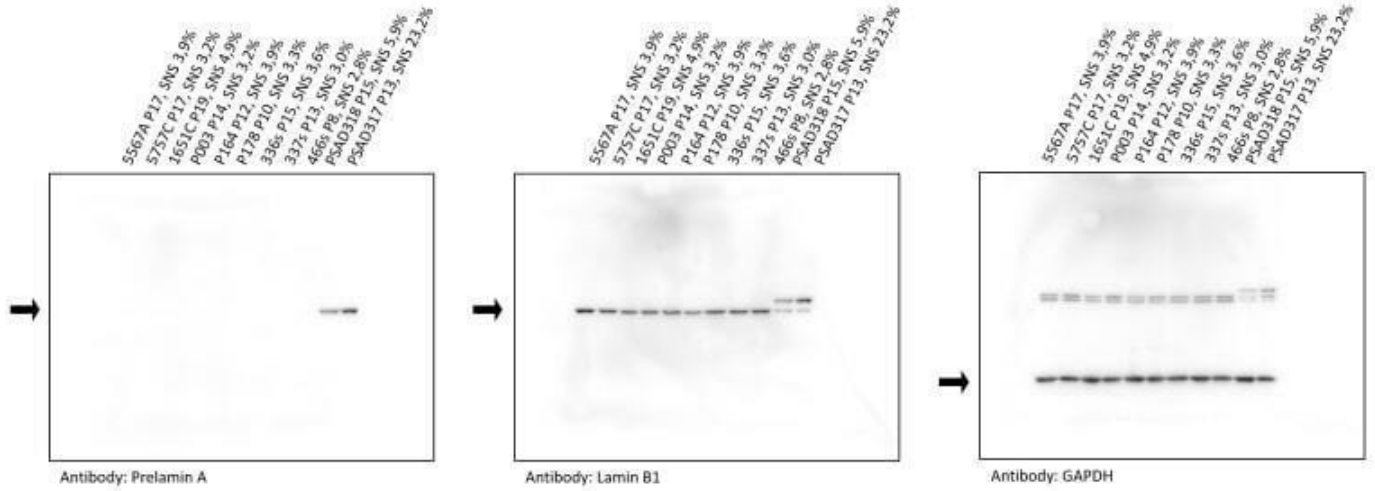
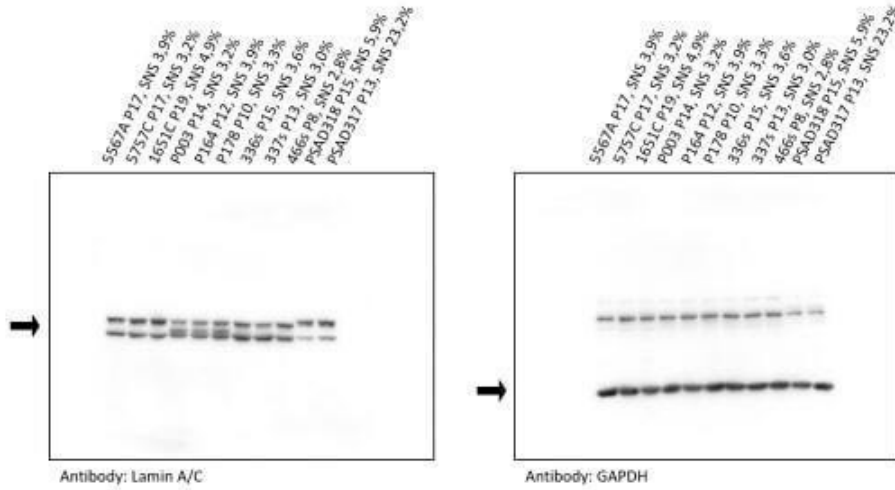


Figure S1. Lamin B1 detection in HGPS, FPLD2, and MADB fibroblasts. Immunohistochemistry for lamin B1 in young (SNS $\leq 5\%$, control passages 16-21, HGPS passages 10-14, FPLD2 passages 9-14, MADB passages 12-14) and old (SNS $\geq 20\%$, control passages 28-31, HGPS passages 18-19, FPLD2 passages 20-23, MADB passages 16-17) control, HGPS, FPLD2 and MADB fibroblasts. Cells were counterstained with DAPI. Scale bar 100 μm .

Full-length scans of western blots in Figure 7 a)



Full-length scans of western blots in Figure 7 d)



Full-length scans of western blots in Figure 7 e)

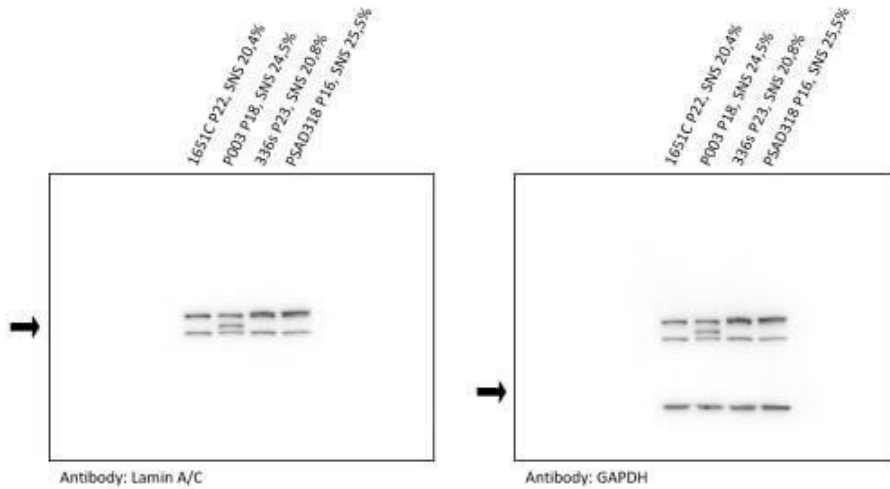


Figure S2. Full-length scan of western blots from Figure 7a, d, e.