

Figure S1. FMO control for cells stained with FITC and PE conjugated antibodies (PE - no stain).

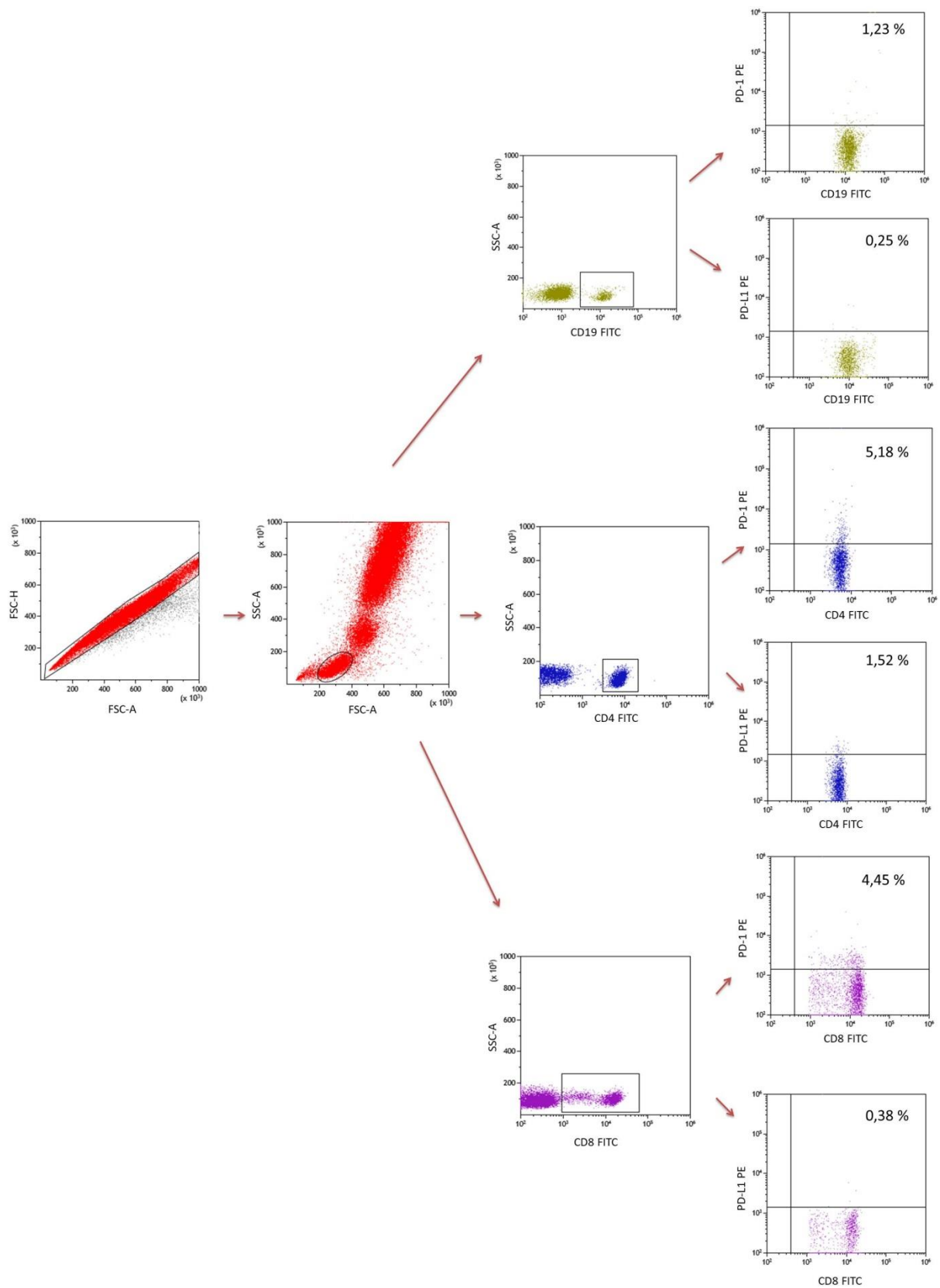


Figure S2. Cytometric analysis of PD-1-positive and PD-L1- positive lymphocytes in healthy controls.

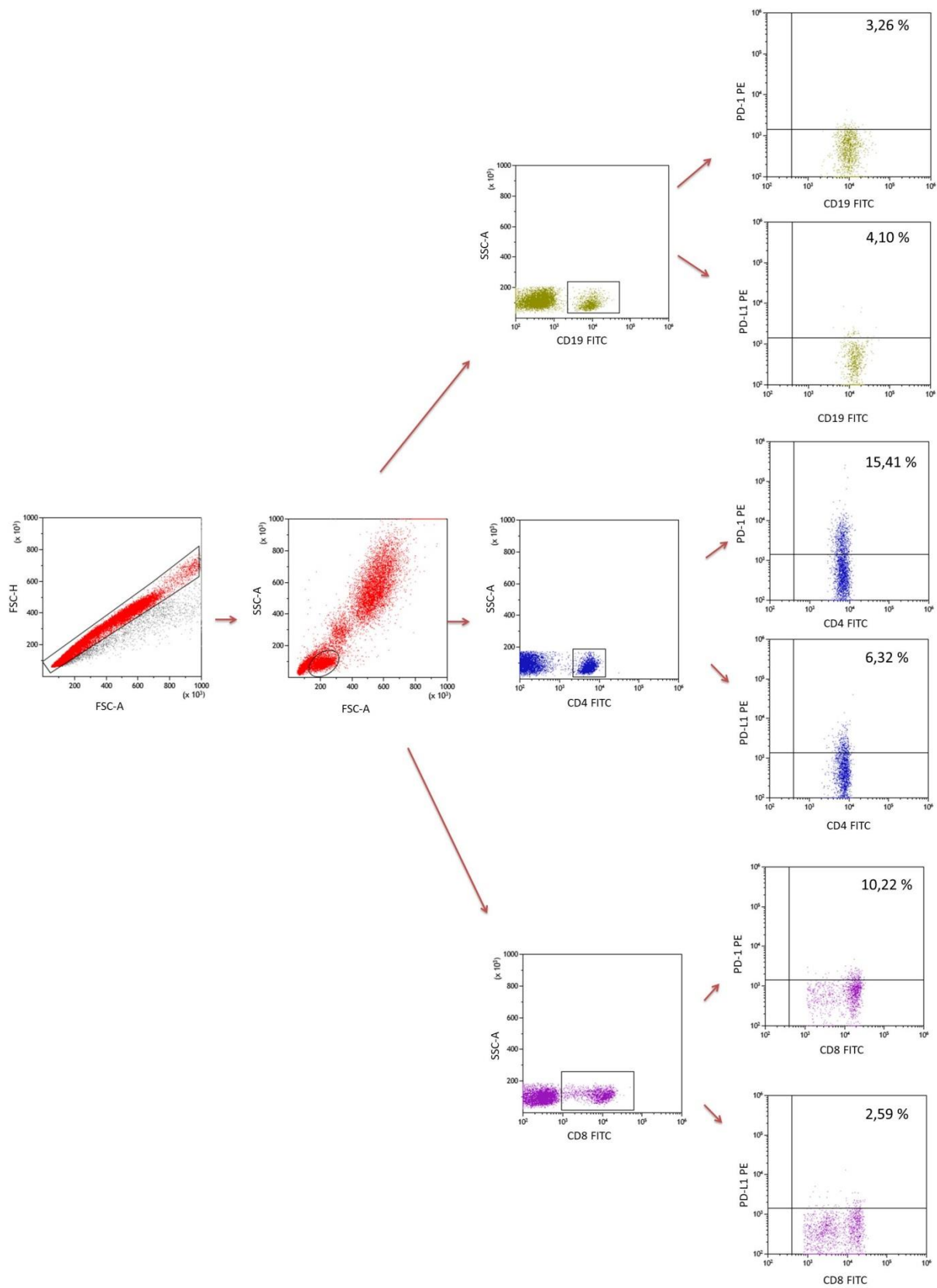


Figure S3. Cytometric analysis of PD-1-positive and PD-L1- positive lymphocytes in patients with COVID-19 hospitalized in the non-ICU

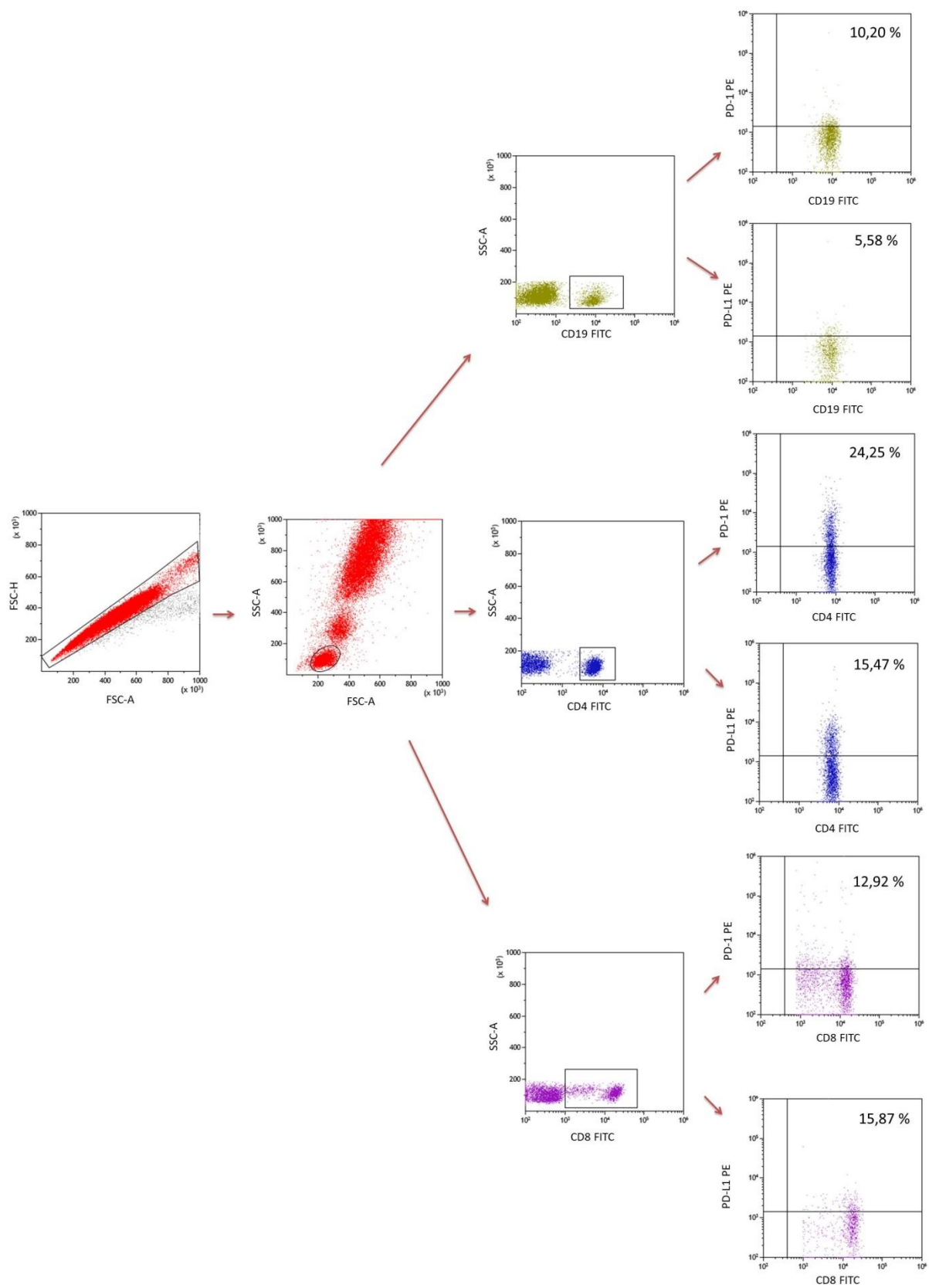


Figure S4. Cytometric analysis of PD-1-positive and PD-L1- positive lymphocytes in patients with COVID-19 hospitalized in the ICU

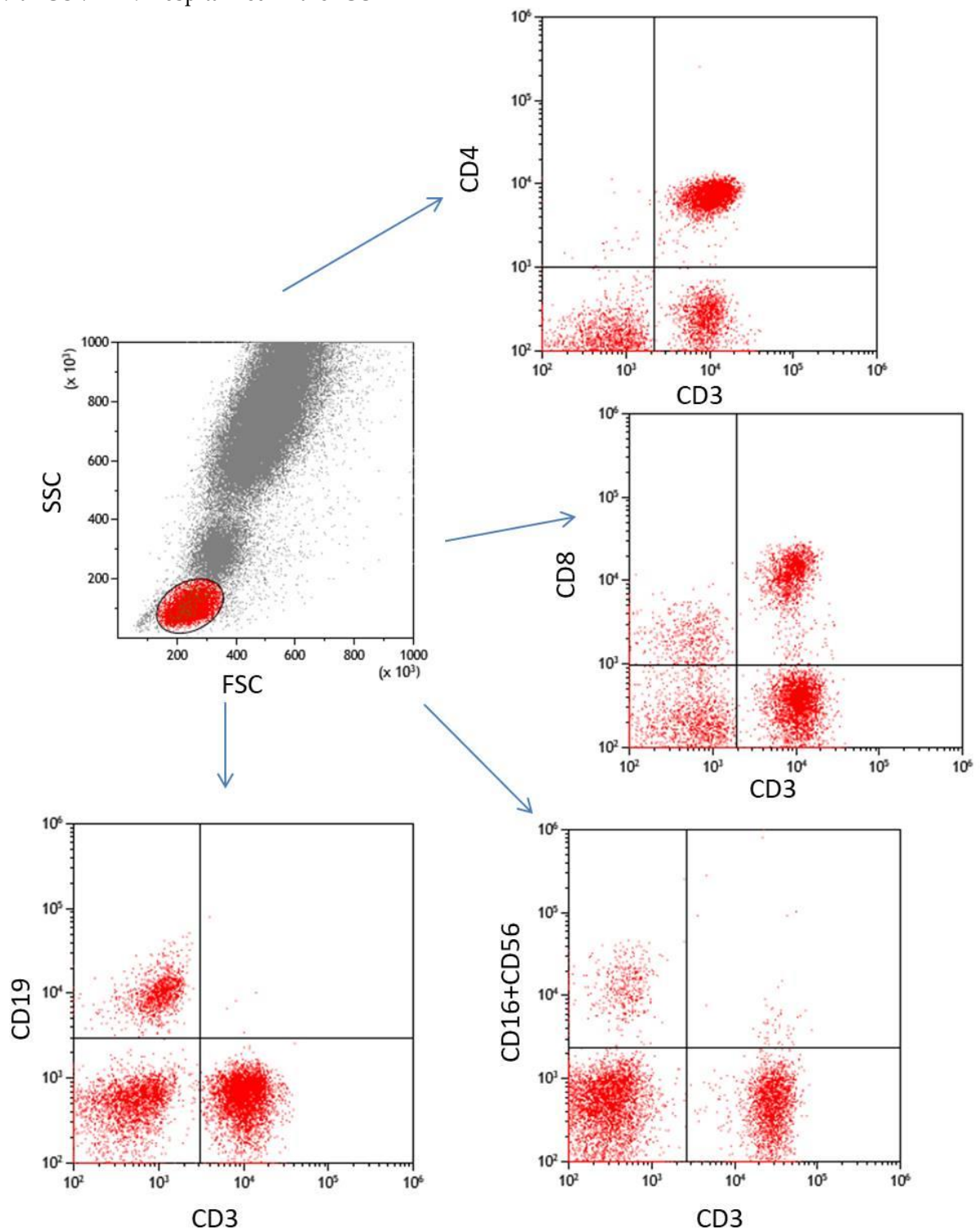


Figure S5. Sample analysis of lymphocytes.