

Supplemental Materials

Engineering a Vascularized Hypoxic Tumor Model for Therapeutic Assessment

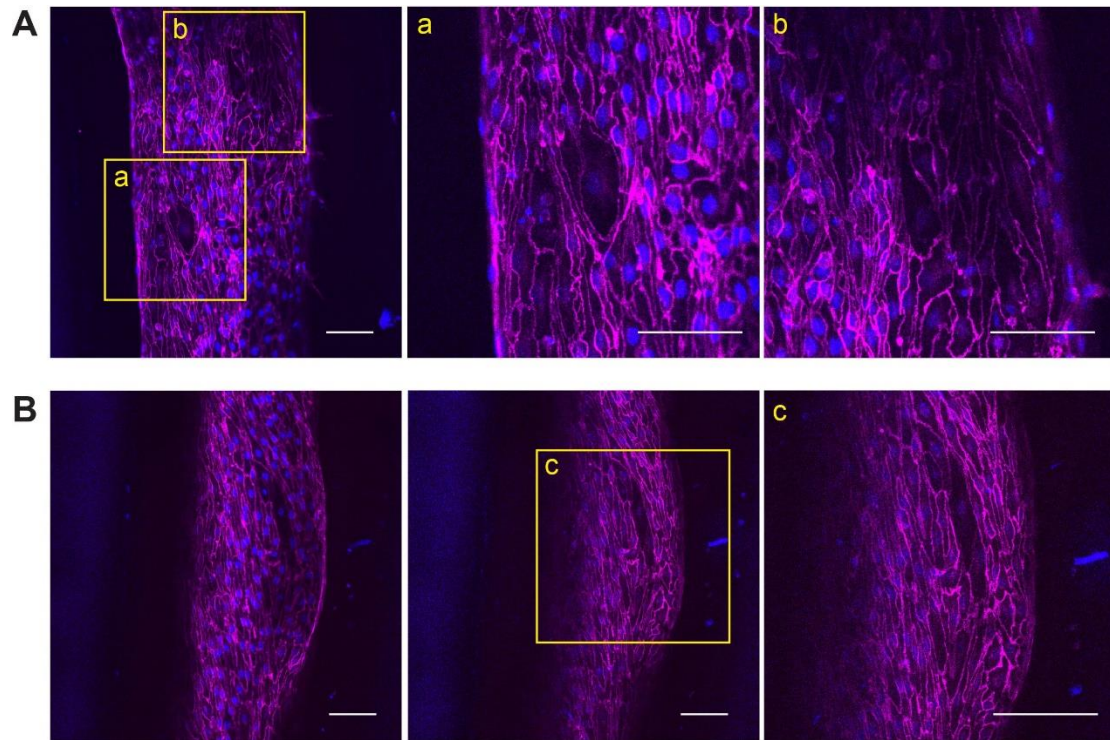
Yuta Ando¹, Jeong Min Oh¹, Winfield Zhao¹, Madeleine Tran¹, Keyue Shen^{1,2,3*}

¹Department of Biomedical Engineering, Viterbi School of Engineering, University of Southern California, Los Angeles, CA 90089

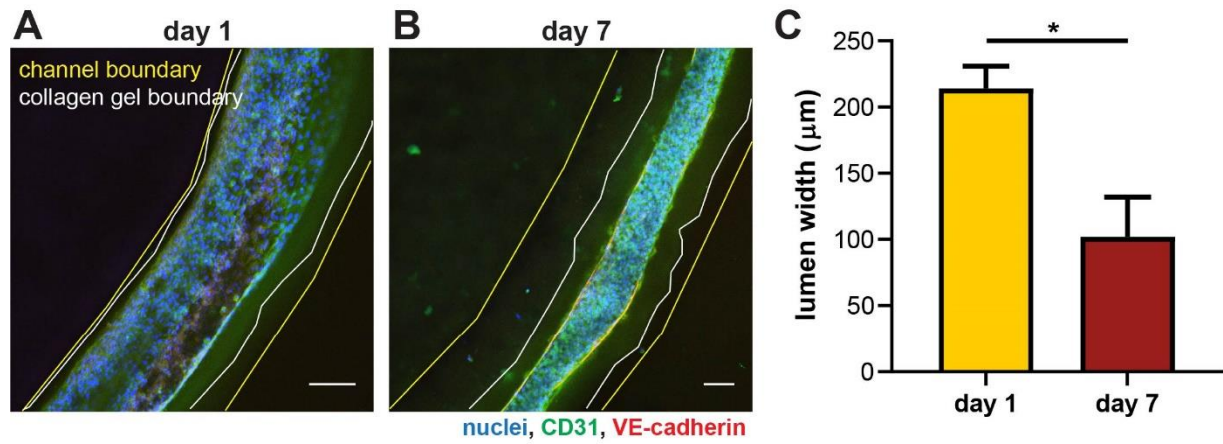
²Norris Comprehensive Cancer Center, Keck School of Medicine, University of Southern California, Los Angeles, CA 90033

³USC Stem Cell, Keck School of Medicine, University of Southern California, Los Angeles, CA 90033

*Correspondence should be addressed to Keyue Shen (keyue.shen@usc.edu)



Supplemental Figure S1. Vascular integrity in endothelial layer. Purple: VE-cadherin; Blue: nuclei. (A) A confocal image taken near the imaging plane of Fig. 3A, and enlargement in the areas a and b. (B) Confocal images taken at (left) and near (middle) the imaging plane of Fig. 3B and enlargement in the area c. All images show a continuous layer of endothelium on the vascular wall. Scale bars: 50 μm .



Supplemental Figure S2. Compaction of vasculature without PDA or fibronectin lining in microfluidic channel. Vascular morphology/size on (A) day 1 and (B) day 7. (C) Quantitative comparison of the lumen width. Scale bars: 100 μm. *: $p < 0.05$ by *t*-test.