

Figure S1a. Cytofluorimetric analysis of exosomal surface epitopes in a representative serum sample from Idiopathic Pulmonary Fibrosis patient analyzed through Kaluza Software.

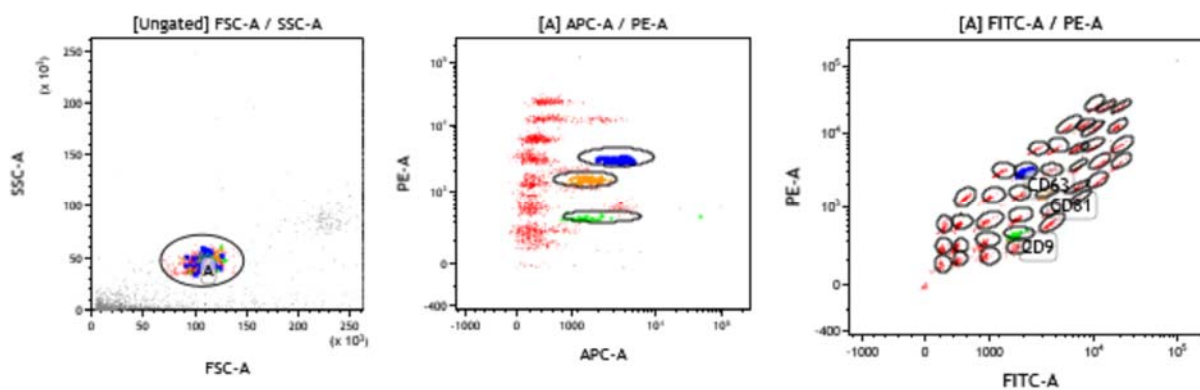


Figure S1b. Cytofluorimetric analysis of exosomal surface epitopes in a representative serum sample from healthy control analyzed through Kaluza Software.