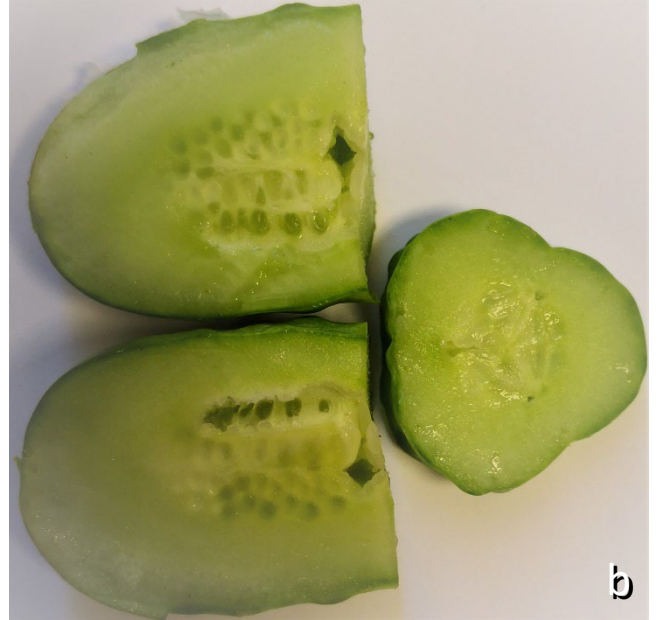


Figure S3 Preliminary outcomes of several horticultural species a, c, e, fruits from untreated and pollinated flowers (seeds can be observed); b, d, f, fruits from sulfur-treated and pollinated flowers (asymmetric formation of seed or no seeds can be observed); g, i, untreated and pollinated flowers of eggplant and watermelon (with pollen tubes growing inside the stigma); h, j, sulfur-treated and pollinated flowers (with no pollen tubes).

C+ (not treated and pollinated)

S (treated with sulfur (S_8) and pollinated)

Cucumber (*Cucumis sativus* L.)



Eggplant (*Solanum melongena* L.)



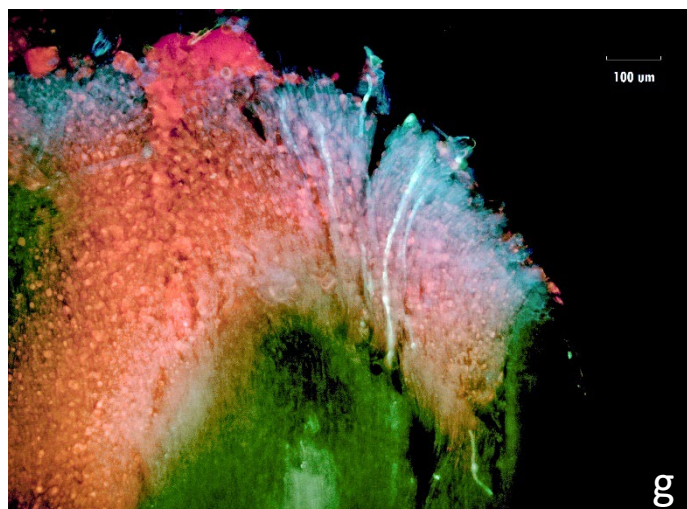
Melon (*Cucumis melo* L.)



C+ (not treated and pollinated)

S (treated with sulfur (S_8) and pollinated)

Eggplant (*Solanum melongena* L.)



Watermelon (*Citrullus lanatus* (Thunb.)
Matsumara & Nakai)

