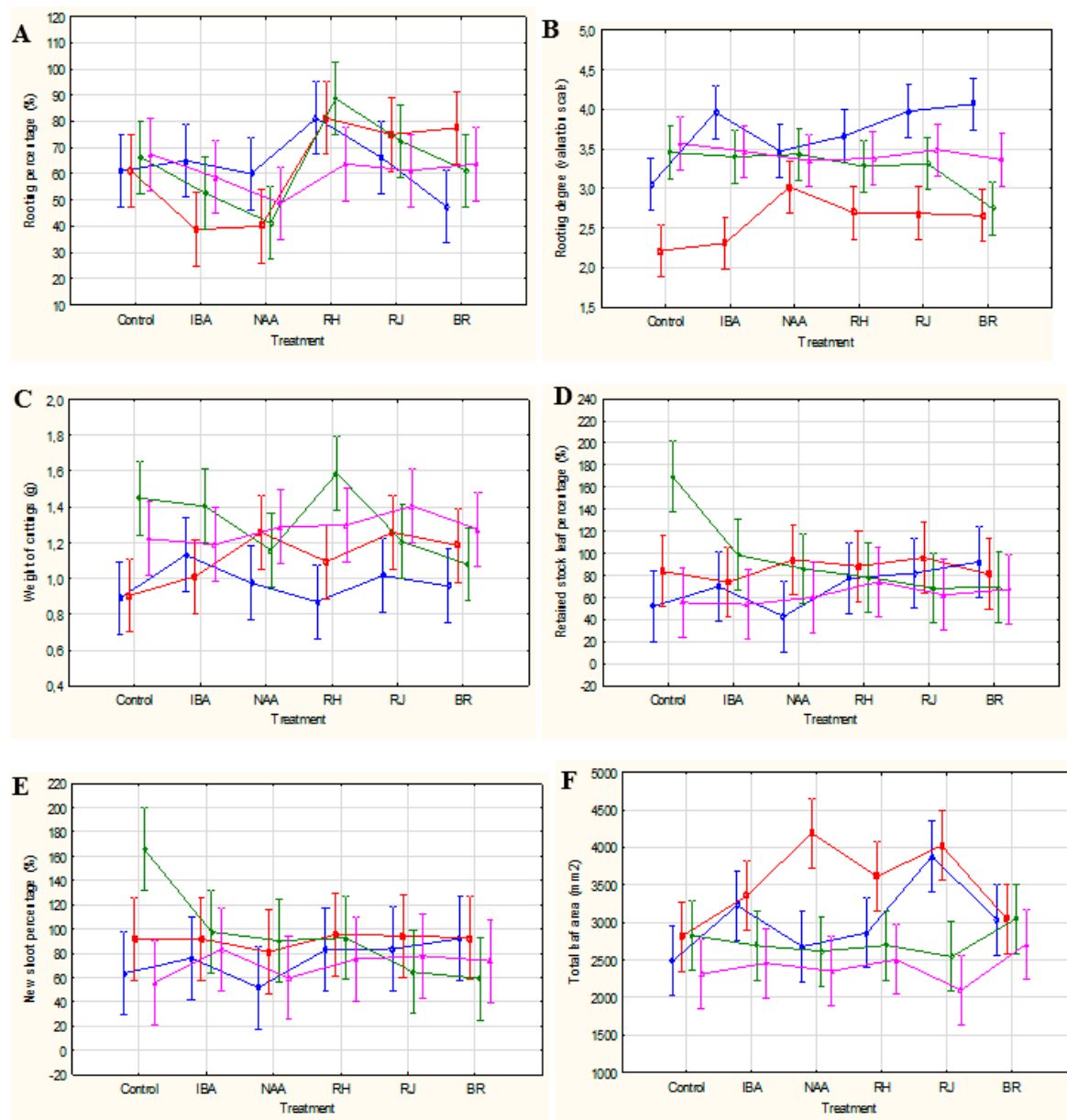
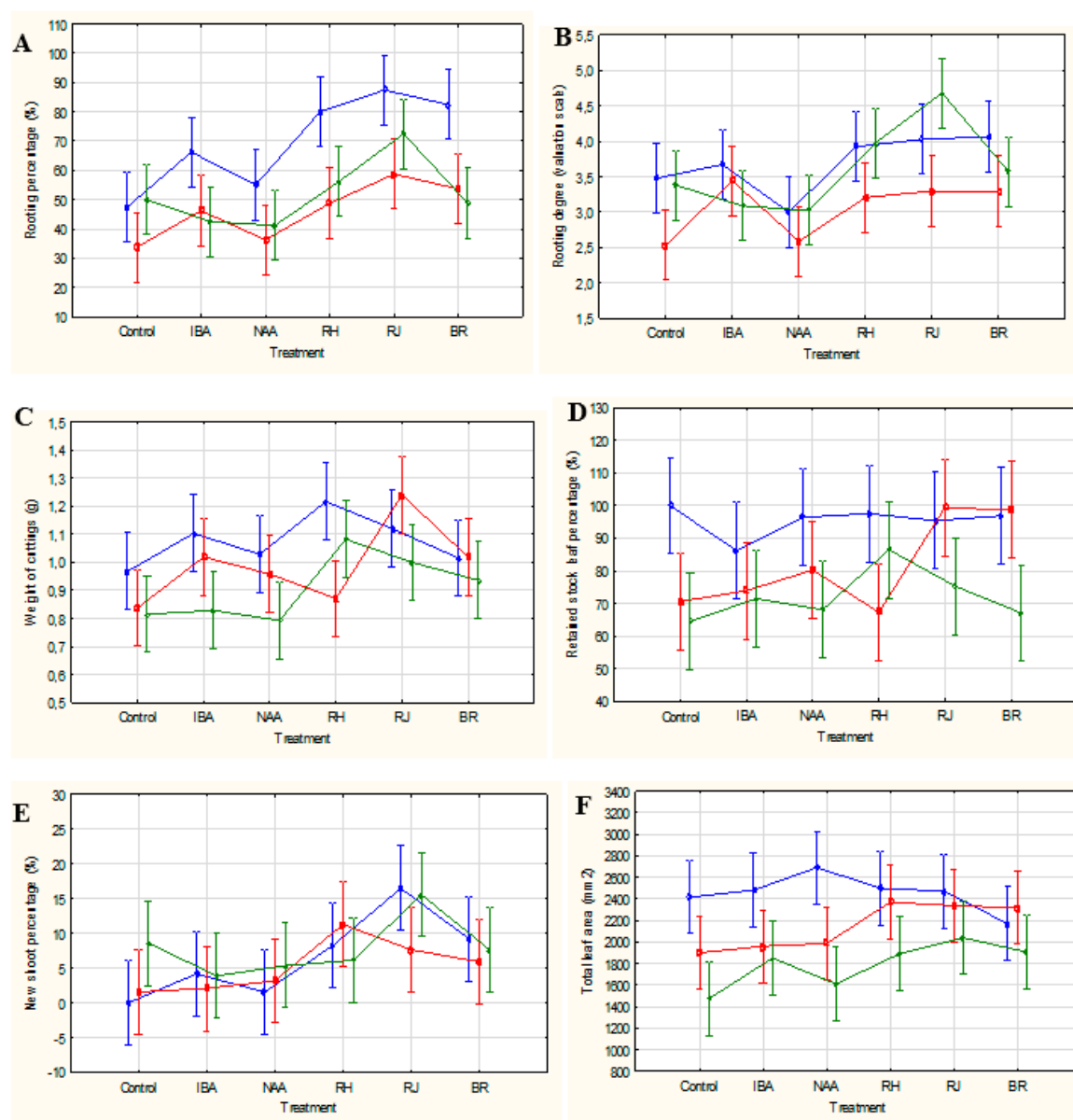


Figure S1. Growth parameters: (A) percentage of rooted cuttings (%), (B) rooting degree (valuation scale), (C) fresh weight (g), (D) percentage of cuttings with retained stock plant leaf and (E) new shoot, (F) total leaf area (mm²) of *Rosa* ‘Duchesse d’Angoulême’. Phenological stages: P1, flower buds closed; P2, at least 50% of flowers opened; P3, immediately after petals shedding; P4, 7-14 days after shedding petals. Treatment: Bef, before rooting; Con, control; IBA, 0.4 % IBA; NAA, 0.2 % NAA; RH, 0.6 % Seaweed Preparation; RJ, 0.4 % Humic Preparation; BR, 0.02 % Plant Preparation. Vertical bars indicate 95% confidence intervals for the means (two-way ANOVA). Figures A and B according to data published [49].



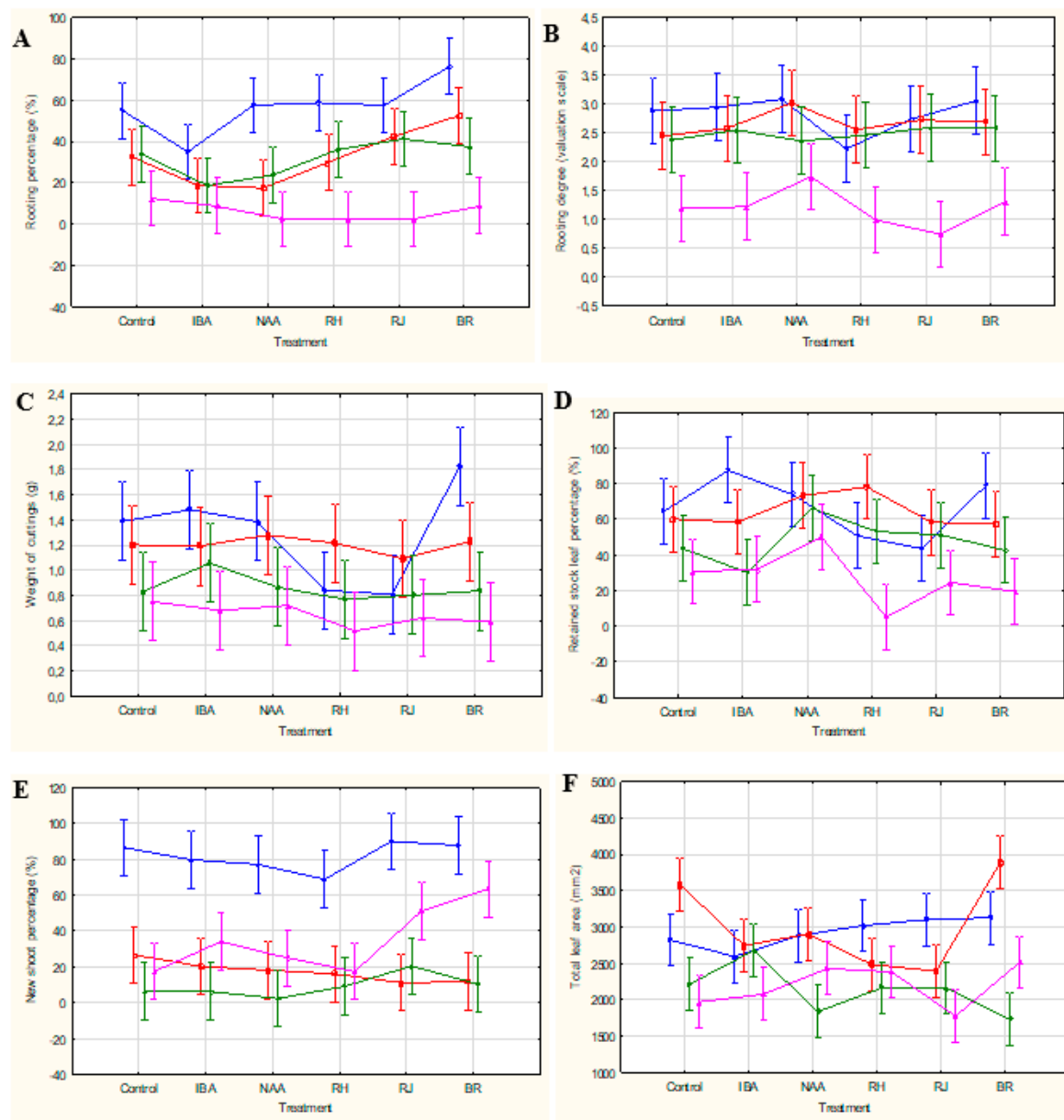
— P1, flower buds closed — P2, flowers in an inflorescence opened
— P3, just after petal fall — P4, 7–14 days after petal fall

Figure S2. Growth parameters: (A) percentage of rooted cuttings (%), (B) rooting degree (valuation scale), (C) fresh weight (g), (D) percentage of cuttings with retained stock plant leaf and (E) new shoot, (F) total leaf area (mm²) of *Rosa* ‘Hurdal’. Phenological stages: P1, flower buds closed; P2, at least 50% of flowers opened; P3, immediately after petals shedding; P4, 7-14 days after shedding petals. Treatment: Bef, before rooting; Con, control; IBA, 0.4 % IBA; NAA, 0.2 % NAA; RH, 0.6 % Seaweed Preparation; RJ, 0.4 % Humic Preparation; BR, 0.02 % Plant Preparation. Vertical bars indicate 95% confidence intervals for the means (two-way ANOVA). Figures A-F according to data published [5].



— P1, flower buds closed — P2, flowers in an inflorescence opened
— P3, just after petal fall — P4, 7–14 days after petal fall

Figure S3. Growth parameters: (A) percentage of rooted cuttings (%), (B) rooting degree (valuation scale), (C) fresh weight (g), (D) percentage of cuttings with retained stock plant leaf and (E) new shoot, (F) total leaf area (mm²) of *Rosa* ‘Maiden’s Blush’. Phenological stages: P1, flower buds closed; P2, at least 50% of flowers opened; P3, immediately after petals shedding; P4, 7-14 days after shedding petals. Treatment: Bef, before rooting; Con, control; IBA, 0.4 % IBA; NAA, 0.2 % NAA; RH, 0.6 % Seaweed Preparation; RJ, 0.4 % Humic Preparation; BR, 0.02 % Plant Preparation. Vertical bars indicate 95% confidence intervals for the means (two-way ANOVA). Figures A-F according to data published [9].



— P1, flower buds closed — P2, flowers in an inflorescence opened
— P3, just after petal fall — P4, 7–14 days after petal fall

Figure S4. Growth parameters: (A) percentage of rooted cuttings (%), (B) rooting degree (valuation scale), (C) fresh weight (g), (D) percentage of cuttings with retained stock plant leaf and (E) new shoot, (F) total leaf area (mm²) of *Rosa* 'Mousseuse Rouge'. Phenological stages: P1, flower buds closed; P2, at least 50% of flowers opened; P3, immediately after petals shedding; P4, 7-14 days after shedding petals. Treatment: Bef, before rooting; Con, control; IBA, 0.4 % IBA; NAA, 0.2 % NAA; RH, 0.6 % Seaweed Preparation; RJ, 0.4 % Humic Preparation; BR, 0.02 % Plant Preparation. Vertical bars indicate 95% confidence intervals for the means (two-way ANOVA).

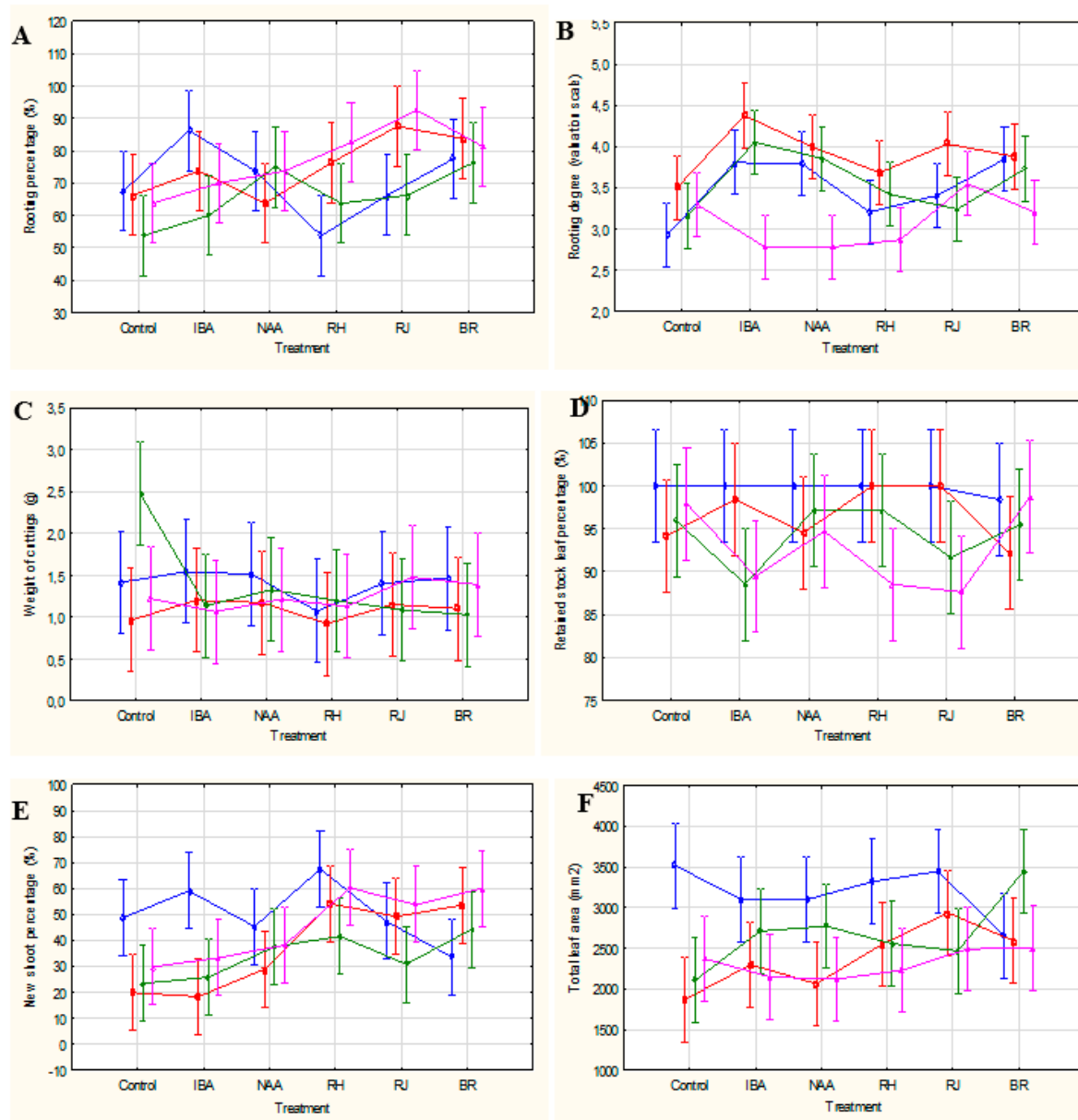
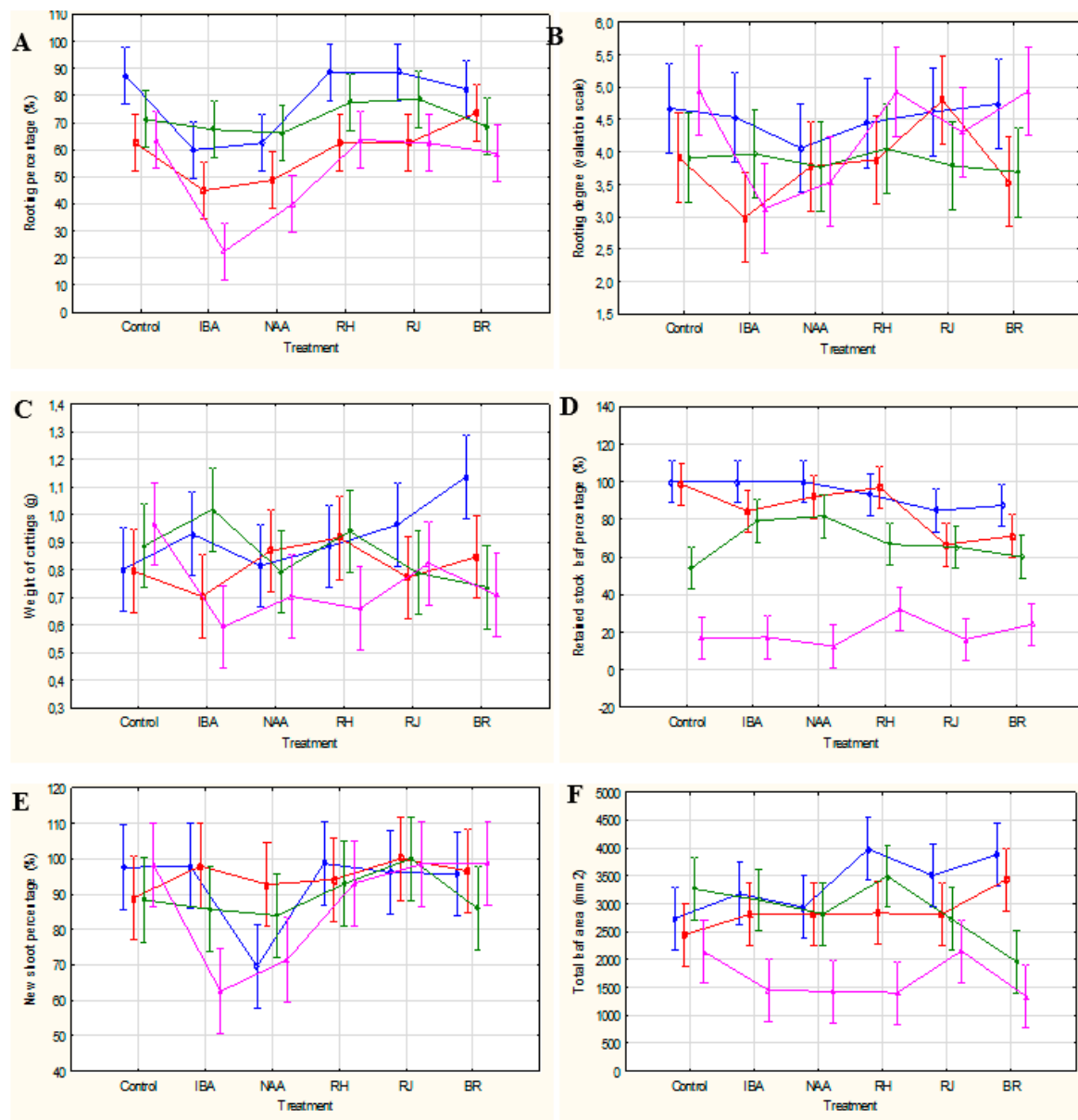
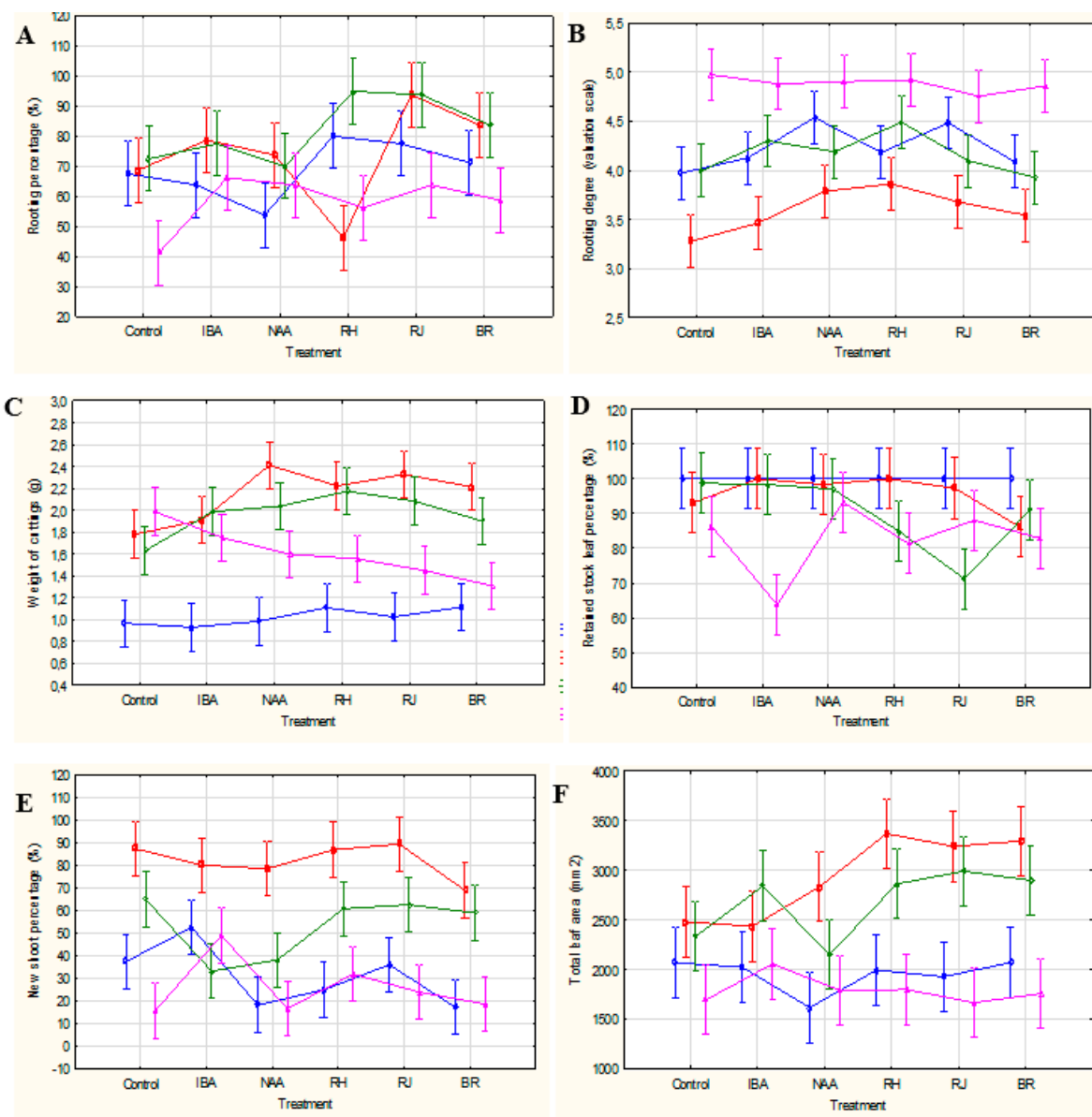


Figure S5. Growth parameters: (A) percentage of rooted cuttings (%), (B) rooting degree (valuation scale), (C) fresh weight (g), (D) percentage of cuttings with retained stock plant leaf and (E) new shoot, (F) total leaf area (mm²) of *Rosa beggeriana* ‘Polstjärnan’. Phenological stages: P1, flower buds closed; P2, at least 50% of flowers opened; P3, immediately after petals shedding; P4, 7-14 days after shedding petals. Treatment: Bef, before rooting; Con, control; IBA, 0.4 % IBA; NAA, 0.2 % NAA; RH, 0.6 % Seaweed Preparation; RJ, 0.4 % Humic Preparation; BR, 0.02 % Plant Preparation. Vertical bars indicate 95% confidence intervals for the means (two-way ANOVA). Figures A and B according to data published [51].



— P1, flower buds closed — P2, flowers in an inflorescence opened
— P3, just after petal fall — P4, 7–14 days after petal fall

Figure S6. Growth parameters: (A) percentage of rooted cuttings (%), (B) rooting degree (valuation scale), (C) fresh weight (g), (D) percentage of cuttings with retained stock plant leaf and (E) new shoot, (F) total leaf area (mm²) of *Rosa helenae* ‘Semiplena’. Phenological stages: P1, flower buds closed; P2, at least 50% of flowers opened; P3, immediately after petals shedding; P4, 7-14 days after shedding petals. Treatment: Bef, before rooting; Con, control; IBA, 0.4 % IBA; NAA, 0.2 % NAA; RH, 0.6 % Seaweed Preparation; RJ, 0.4 % Humic Preparation; BR, 0.02 % Plant Preparation. Vertical bars indicate 95% confidence intervals for the means (two-way ANOVA). Figures A and B according to data published [54].



■ P1, flower buds closed ■ P2, flowers in an inflorescence opened
■ P3, just after petal fall ■ P4, 7–14 days after petal fall