

Supporting Information

Figure S1

Figure. S1. Time series of available soil water content (ASWC, %) during two maize growing seasons of 2013 and 2014.

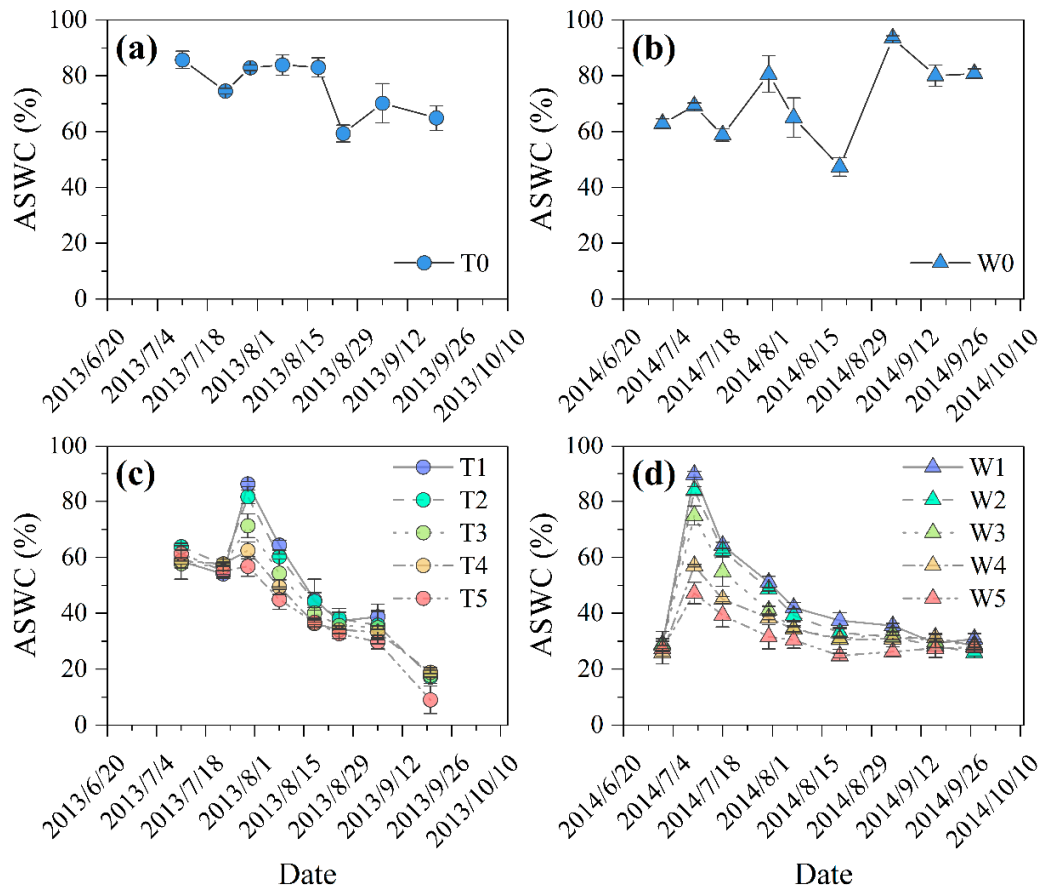


Figure S1 Time series of available soil water content (ASWC, %) during two maize growing seasons of 2013 (a,c) and 2014 (b,d). ASWC ranged from 0 to 100%; 0 represents the soil water at the wilting coefficient, and 100% represents soil water at field capacity. T0 represented rain-fed treatment in 2013, T1–T5 indicated the five irrigation treatments in 2013. W0 denoted the rain-fed treatment in 2014, and W1–W5 indicated the five irrigation treatments in 2014. Prolonged drought treatments began on July 24 (seven-leaf stage) in 2013 and July 2 (three-leaf stage) in 2014. The error bars denote the standard errors of three replications.