

Figure S1. Compound substrate treatments and testing for their physicochemical properties.

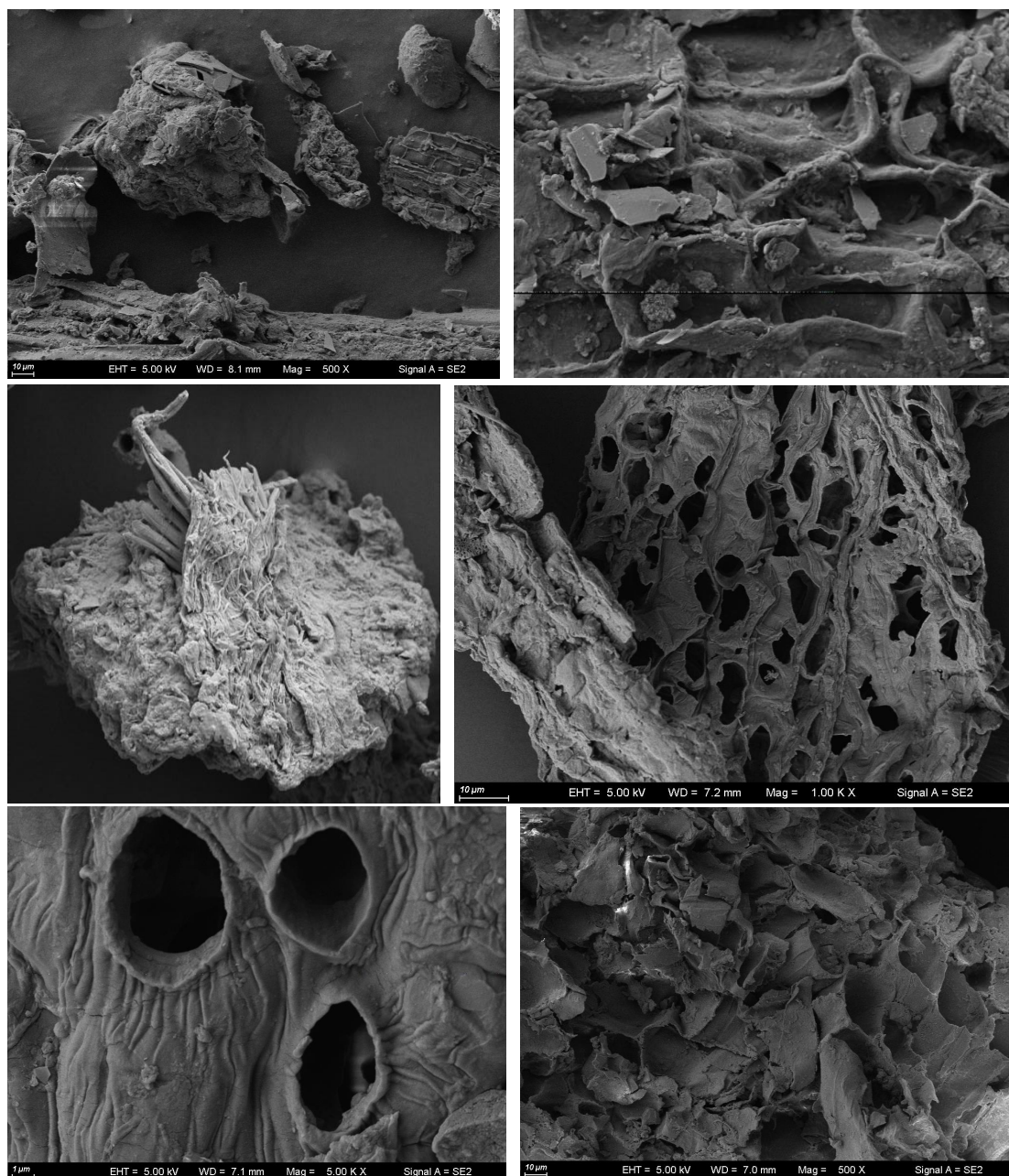


Figure S2. SEM images of the major materials of compound substrates.



Figure S3. Tomato seedling raised in different compound substrates.

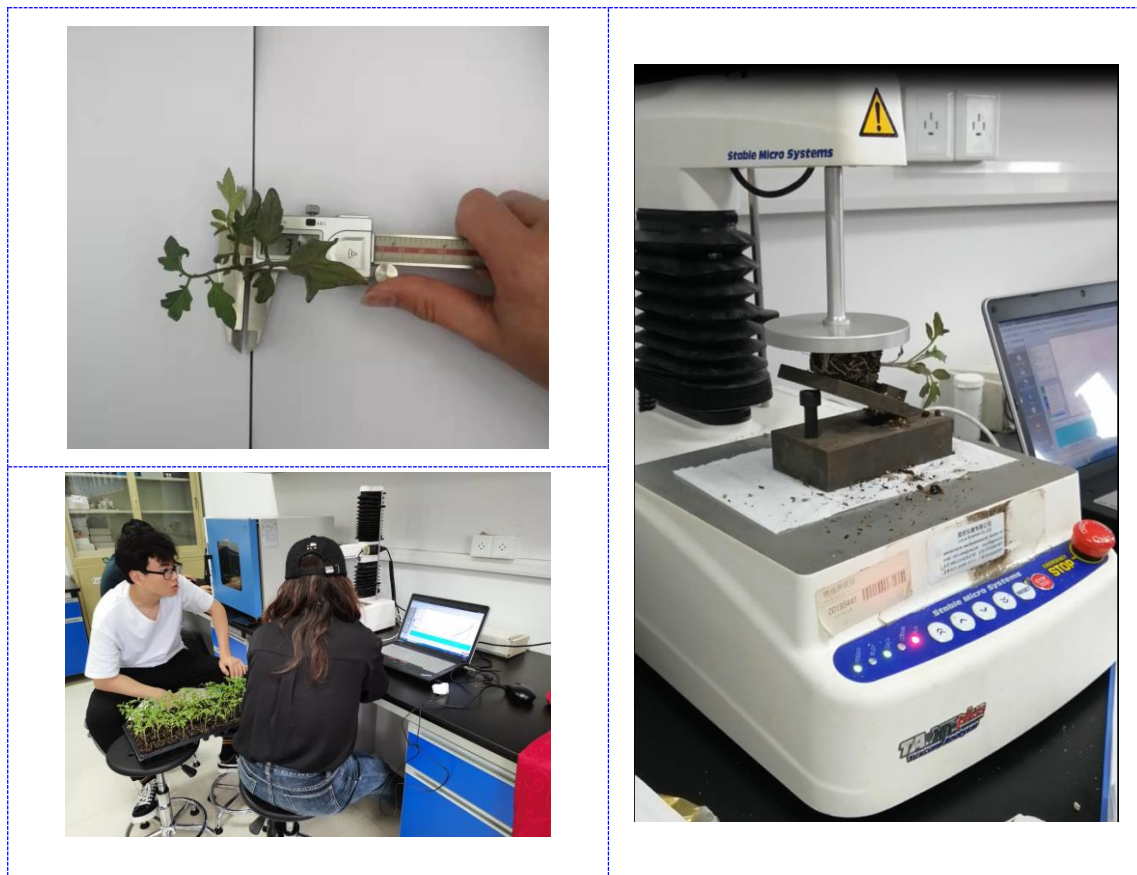


Figure S4. Testing for the growth and mechanical properties of plug seedlings.



Figure S5. Automatic transplanting works from the growing trays to the destination trays.