

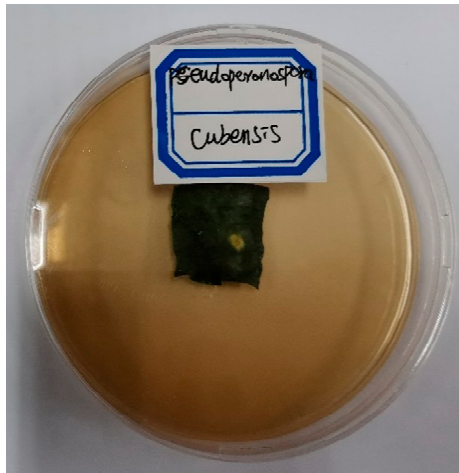
Table S1. Component of standard nutrient solution.

Standard A		Standard B		Standard C	
Chemical reagent	Mass/g	Chemical reagent	Mass/g	Chemical reagent	Mass/g
Ca (NO ₃) ₂ ·4H ₂ O	826	NH ₄ H ₂ PO ₄	115	EDTA-2Na	27.8
KNO ₃	607	MgSO ₄ ·7H ₂ O	483	FeSO ₄ ·7H ₂ O	37.2
				H ₃ BO ₃	2.86
				MnSO ₄ · 4H ₂ O	2.13
				ZnSO ₄ ·4H ₂ O	0.22
				CuSO ₄ ·5H ₂ O	0.08
				(NH ₄) ₆ Mo ₇ O ₂₄ ·4H ₂ O	0.02

Note: Each standard liquor was prepared in a 10L aqueous solution. Use after diluting 100 times.

Table S2. Grading of cucumber downy mildew severity.

Disease level	Symptoms described
Level 0	asymptomatic
Level 1	Diseased spot area occupies less than 5% of the leaf area
Level 3	Diseased area accounts for 6% to 10% of the leaf area
Level 5	Diseased area accounts for 11% to 25% of the leaf area
Level 7	Diseased area accounts for 26% to 50% of the leaf area
Level 9	Diseased spot area accounts for more than 50% of the leaf area

**Figure S1.** Extraction of cucumber downy mildew spores