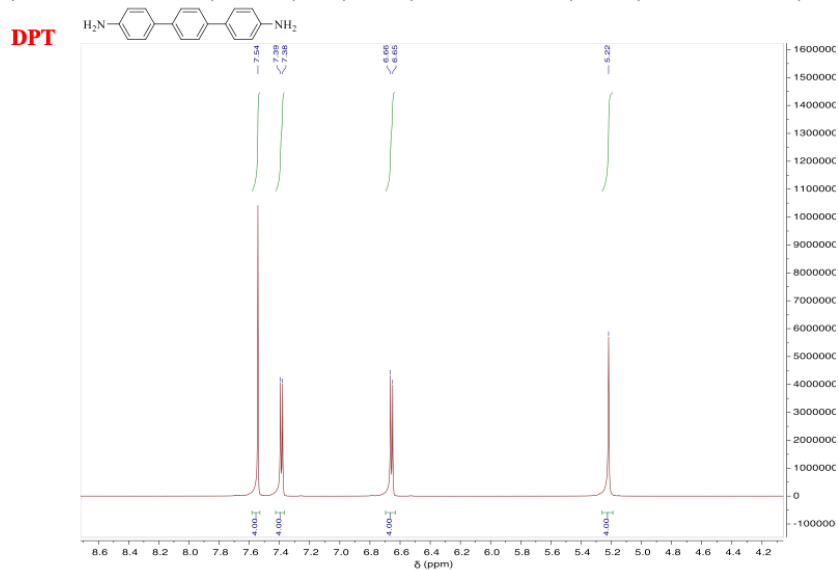
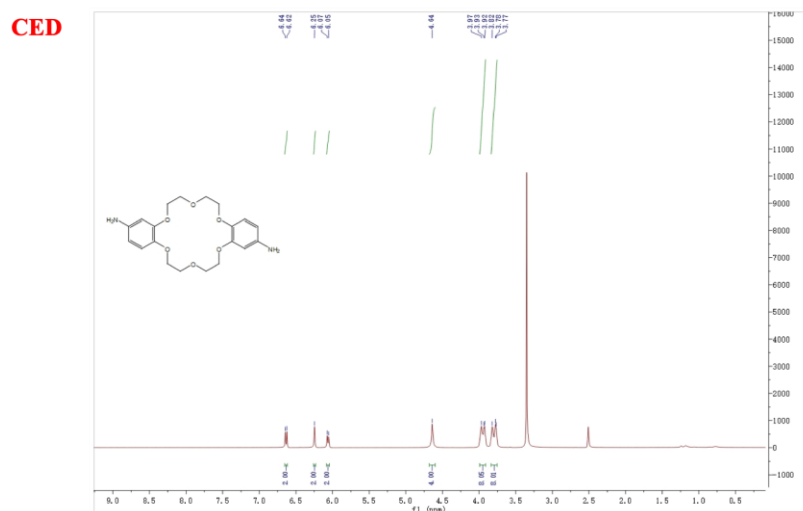


$^1\text{H}$  NMR (600 MHz, DMSO- $d_6$ )  $\delta$  7.54 (s, 4H), 7.39 (d,  $J$  = 8.5 Hz, 4H), 6.66 (d,  $J$  = 8.5 Hz, 4H), 5.22 (s, 4H).



$^1\text{H}$  NMR (400 MHz, DMSO- $d_6$ )  $\delta$  6.63 (d,  $J$  = 8.4 Hz, 2H), 6.25 (s, 2H), 6.06 (d,  $J$  = 8.3 Hz, 2H), 4.64 (s, 4H), 3.99 – 3.91 (m, 8H), 3.83 – 3.75 (m, 8H).



**Figure S1.** NMR spectra of DPT and CED.