

Figure S1. Black Forest honey samples (triplicates): reconstructed ion chromatogram for  $m/z$  219  $[M+Na]^+$

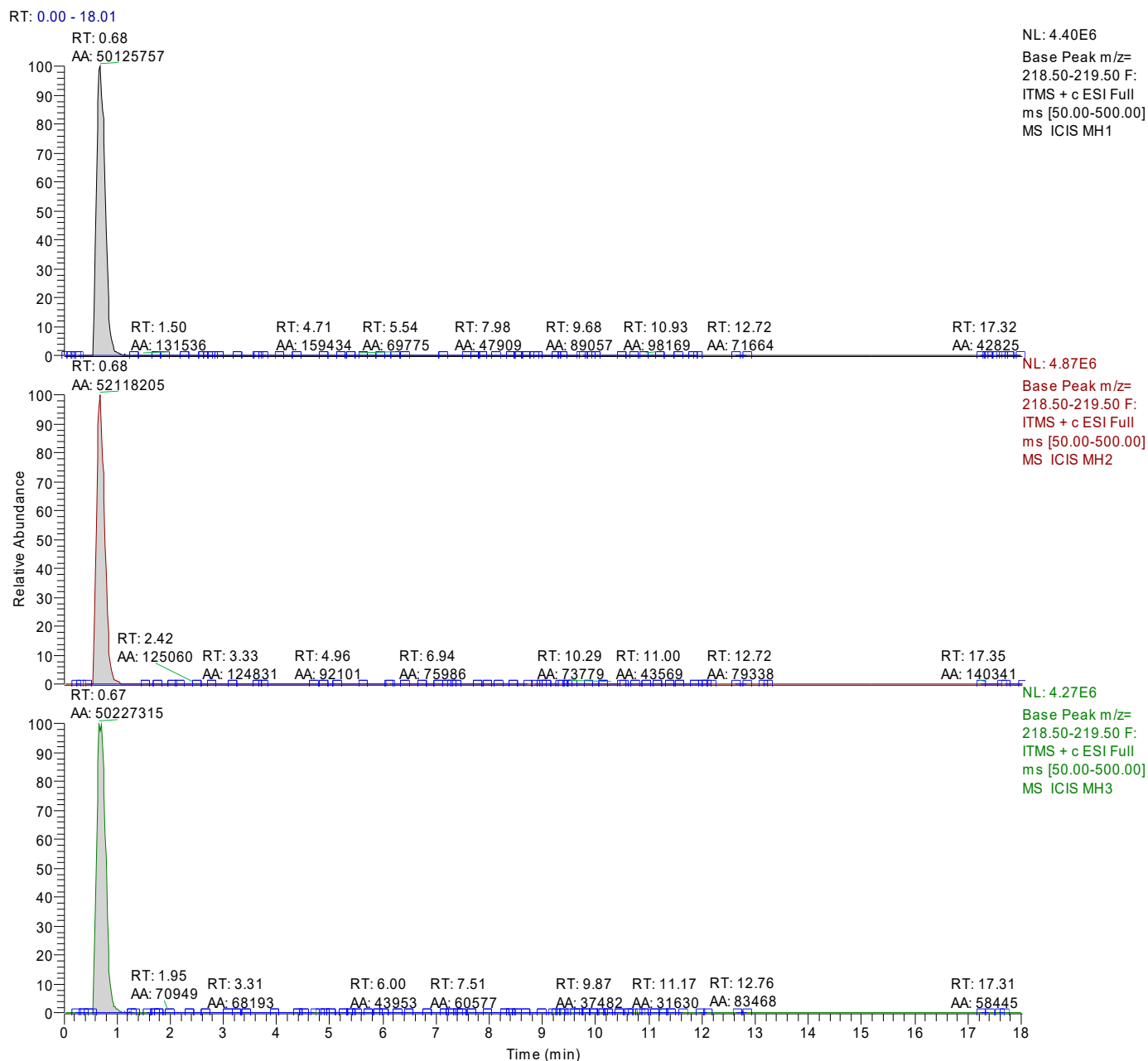


Figure S2. Manuka honey samples (triplicates): reconstructed ion chromatogram for  $m/z$  219  $[M+Na]^+$

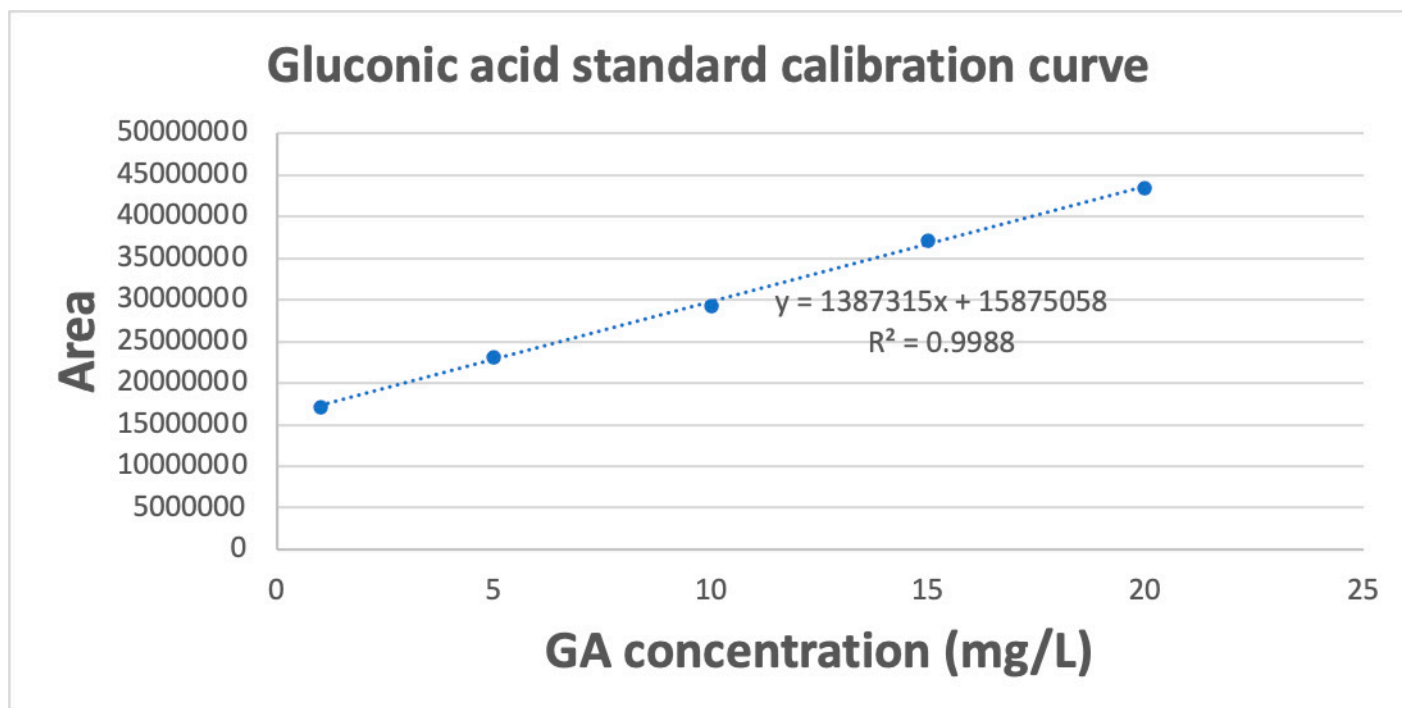


Figure S3. A calibration curve of diluted gluconic acid standard (0, 1, 5, 10, 15, 20 mg/L)