

Electronic Supplementary Information

Slurry polymerization of ethylene using thermostable α -diimine nickel catalysts covalently linked to silica via substituents on acenaphthequinone-backbone

Kening Zong, Yanhui Hou, Xiaobei Zhao, Yali Sun, Binyuan Liu and Min Yang

Table of Contents

GPC curves of polyethylene	S2
DSC curves of polyethylene	S3
¹³ C NMR spectra of polyethylene	S6

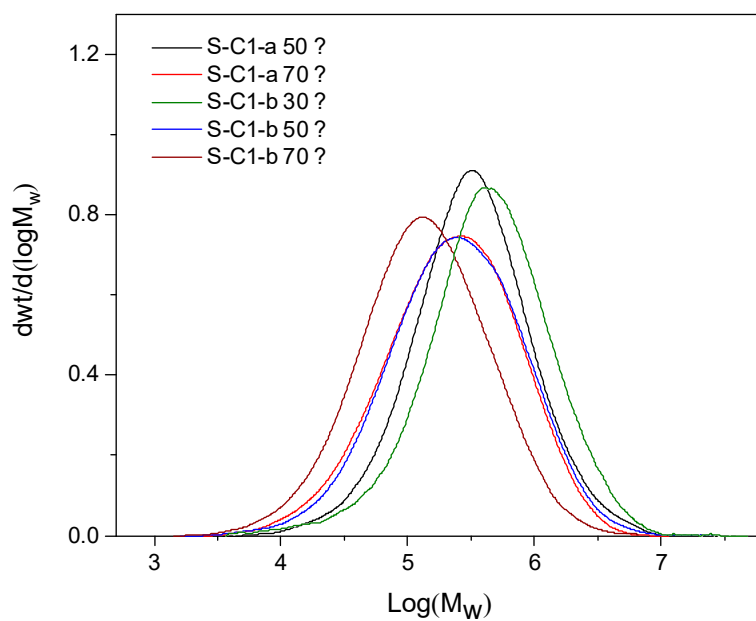


Figure S1. GPC curves of polyethylene obtained with S-C1-a/b (Entries 2, 3, 5, 6, 7 in Table 2)

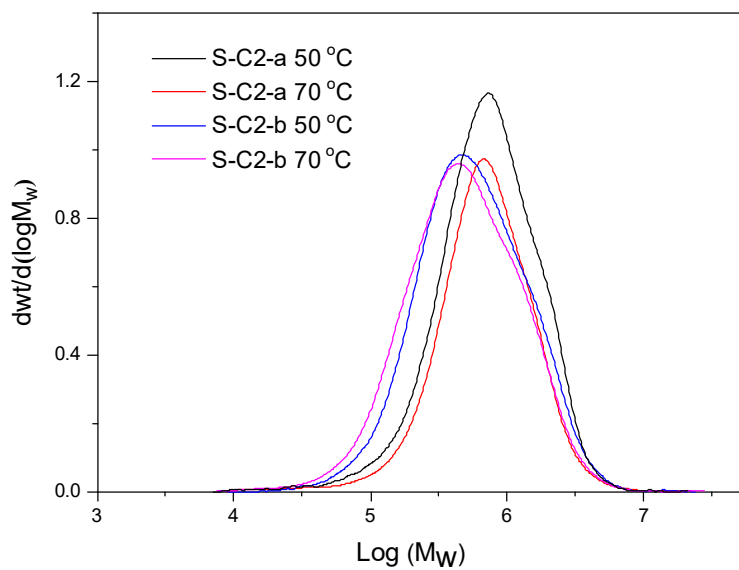


Figure S2. GPC curves of polyethylene obtained with S-C2-a/b (Entries 9, 10, 13, 14 in Table 2)

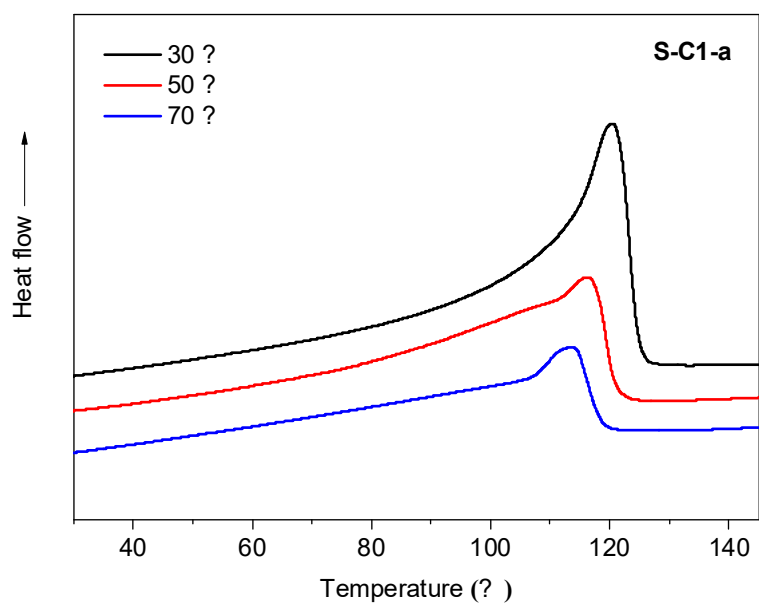


Figure S3. DSC curves of polyethylene obtained with S-C1-a (Entries 1- 3 in Table 2)

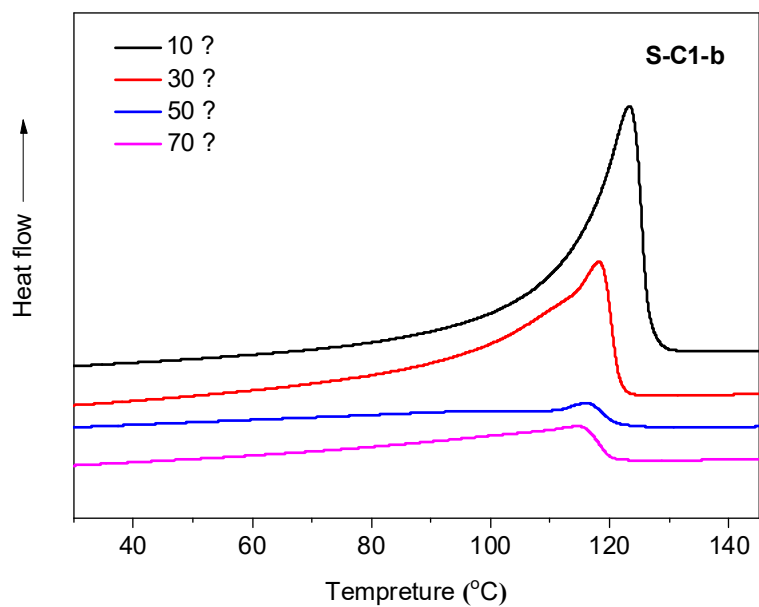


Figure S4. DSC curves of polyethylene obtained with S-C1-b (Entries 4-7 in Table 2)

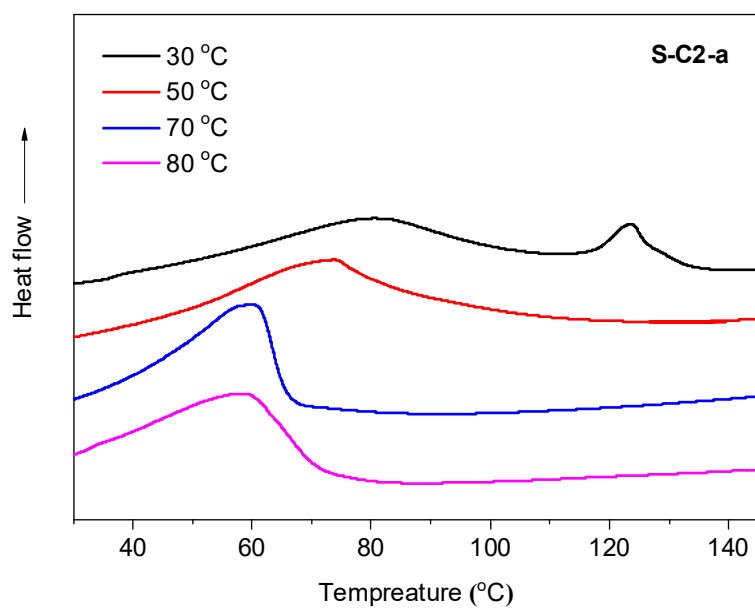


Figure S5. DSC curves of polyethylene obtained with S-C2-a (Entries 8-11 in Table 3)

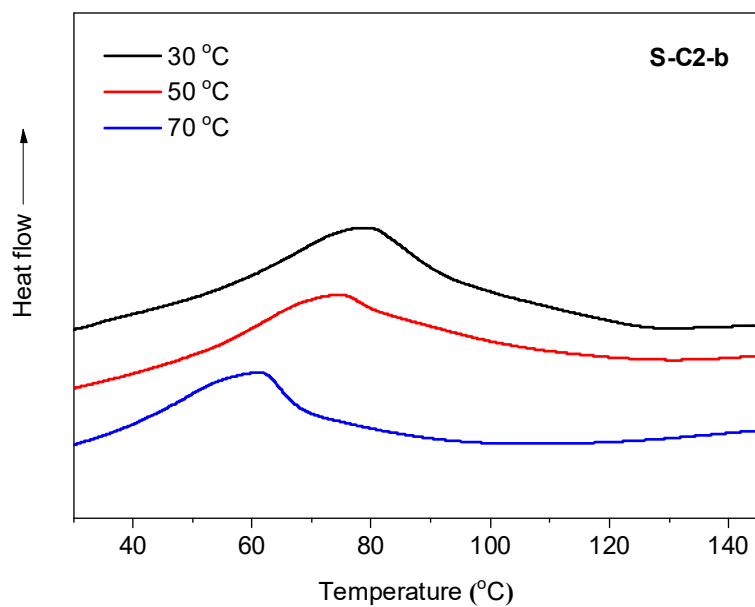


Figure S6. DSC curves of polyethylene obtained with S-C2-b (Entries 12-14 in Table 3)

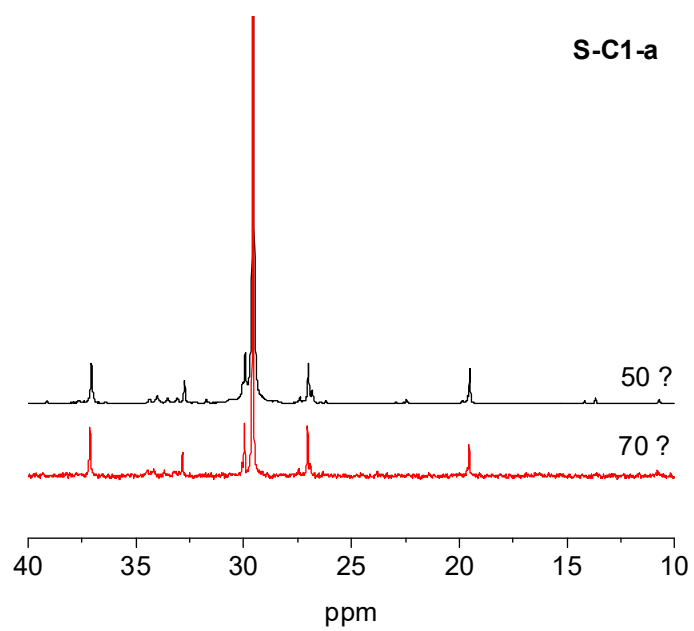


Figure S7. ^{13}C NMR spectra of polyethylenes (Entries 2, 3 in Table 2).

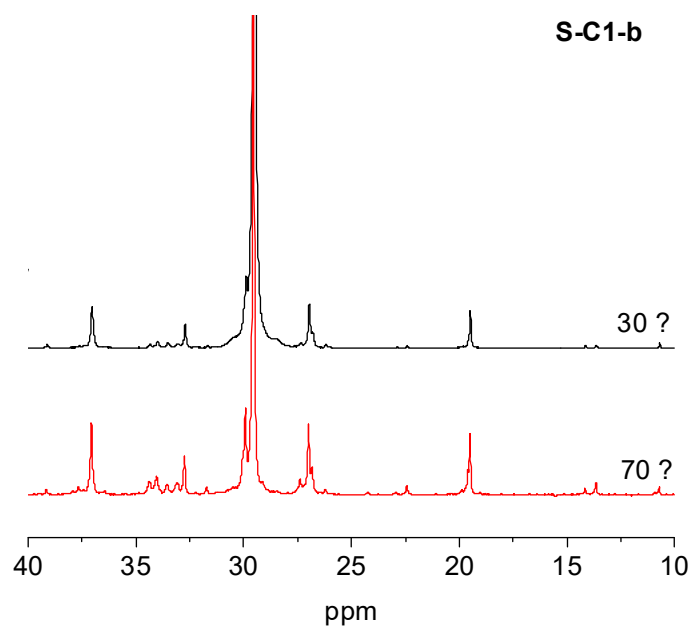


Figure S8. ^{13}C NMR spectra of polyethylenes (Entries 5, 7 in Table 2).

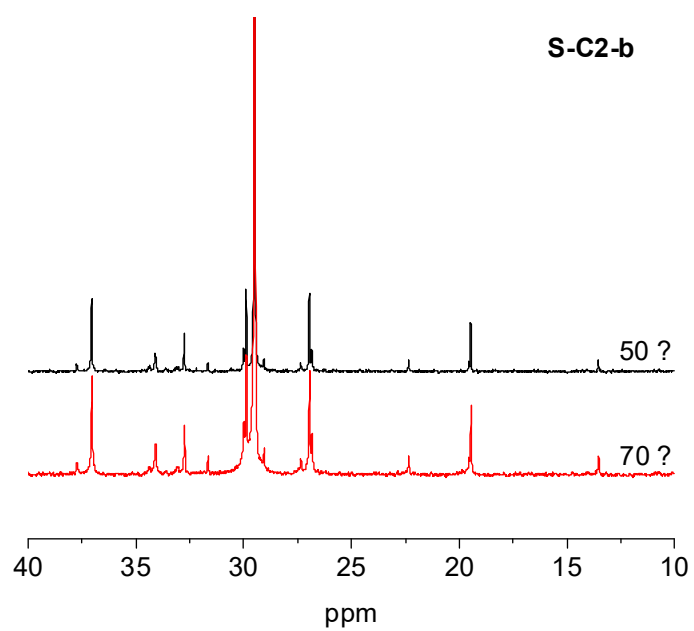


Figure S9. ^{13}C NMR spectra of polyethylenes (Entries 13, 14 in Table 3).