

Supporting information

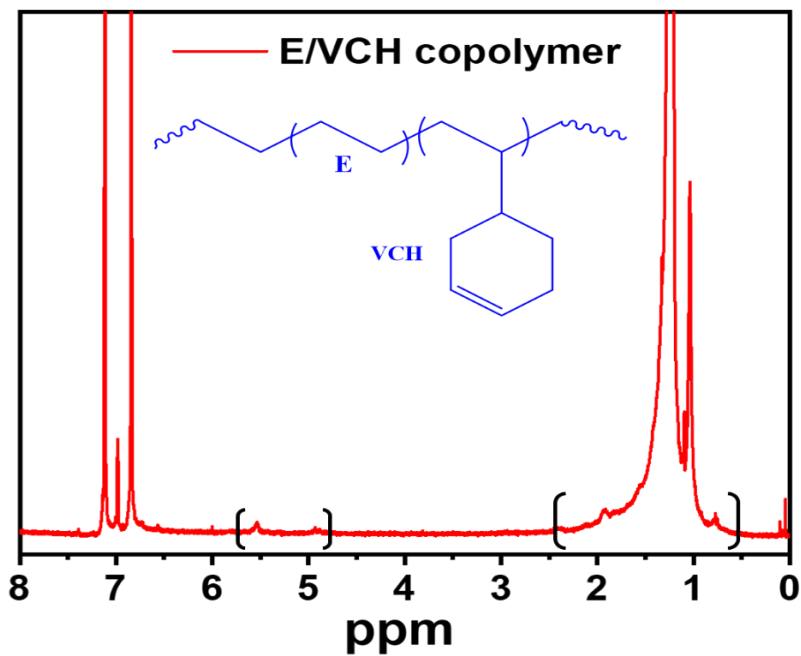


Figure S1a.

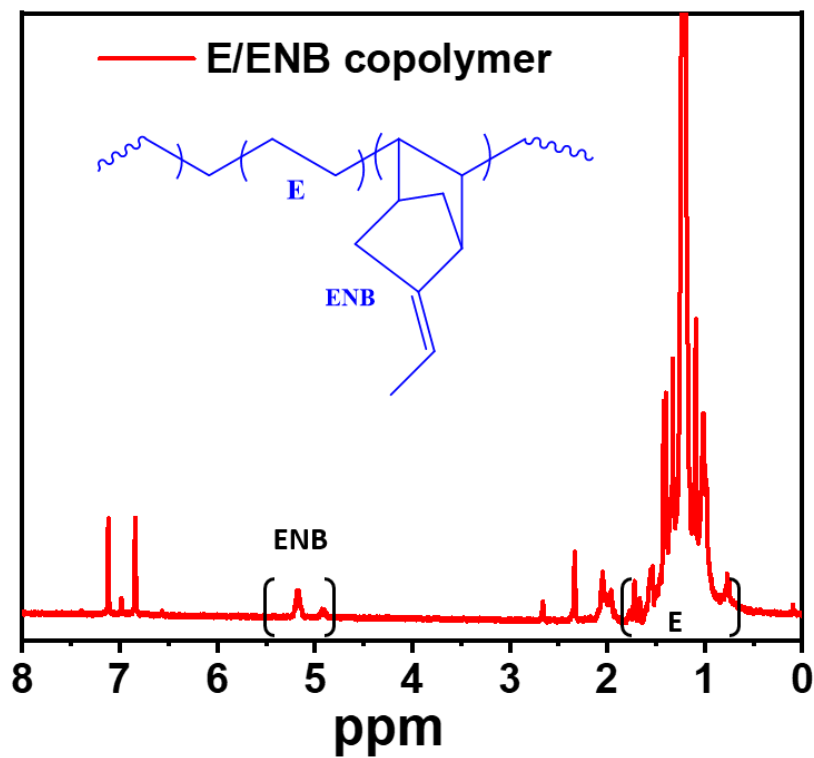


Figure S1b.

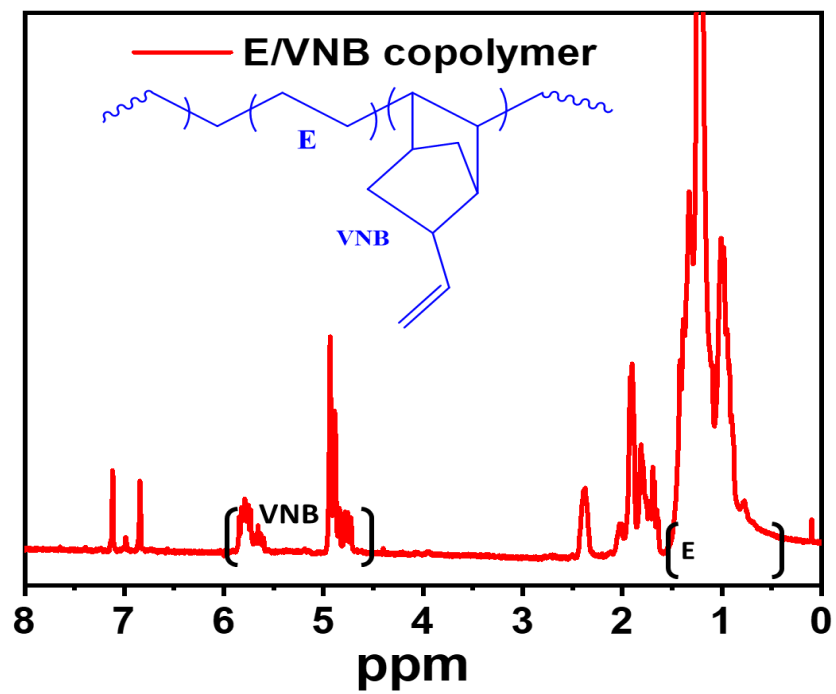


Figure S1c.

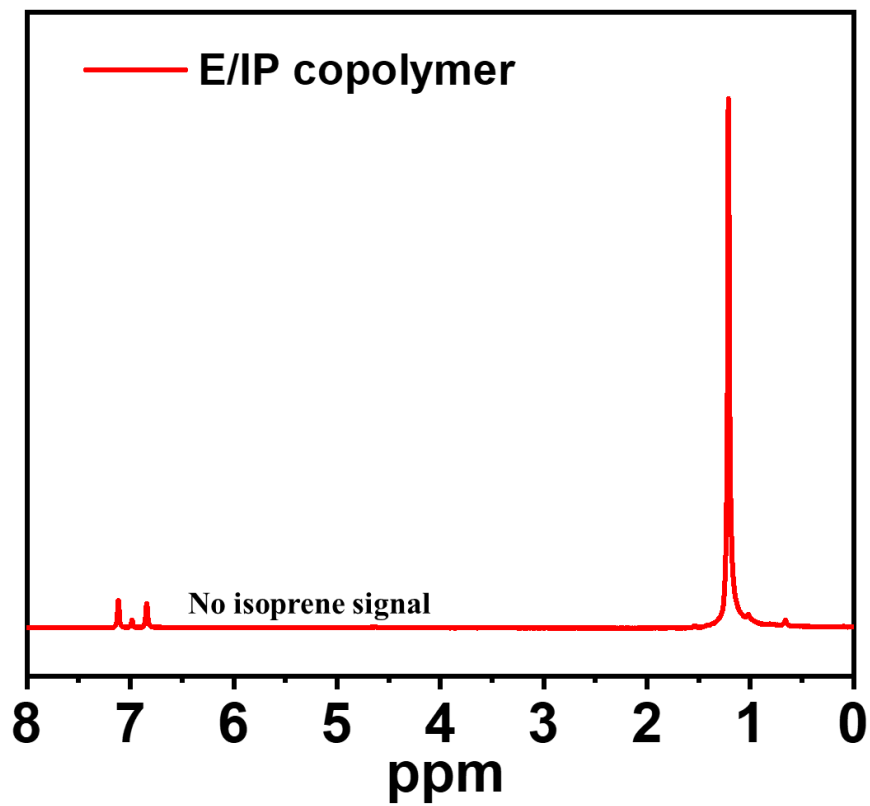


Figure S1d.

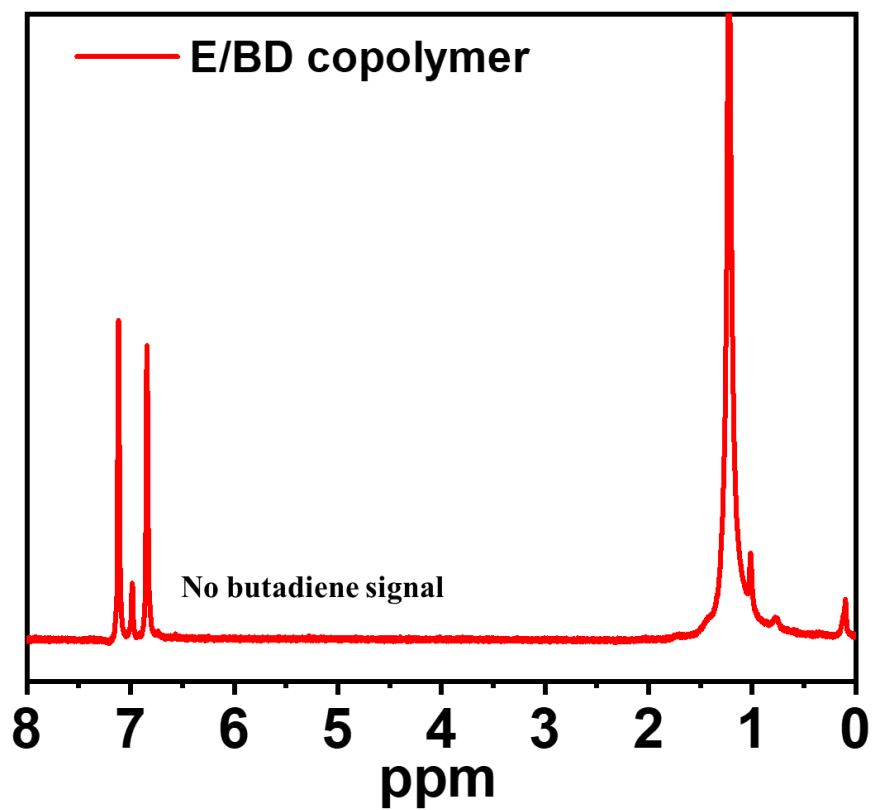


Figure S1e.

Figures S1a to S1e, the structure of E/diene copolymers

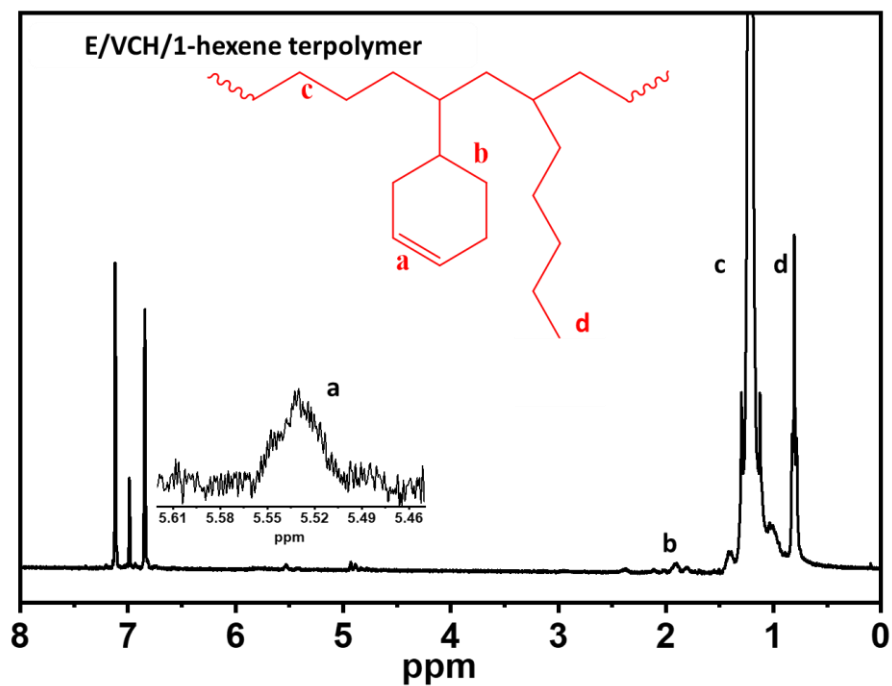


Figure S2a.

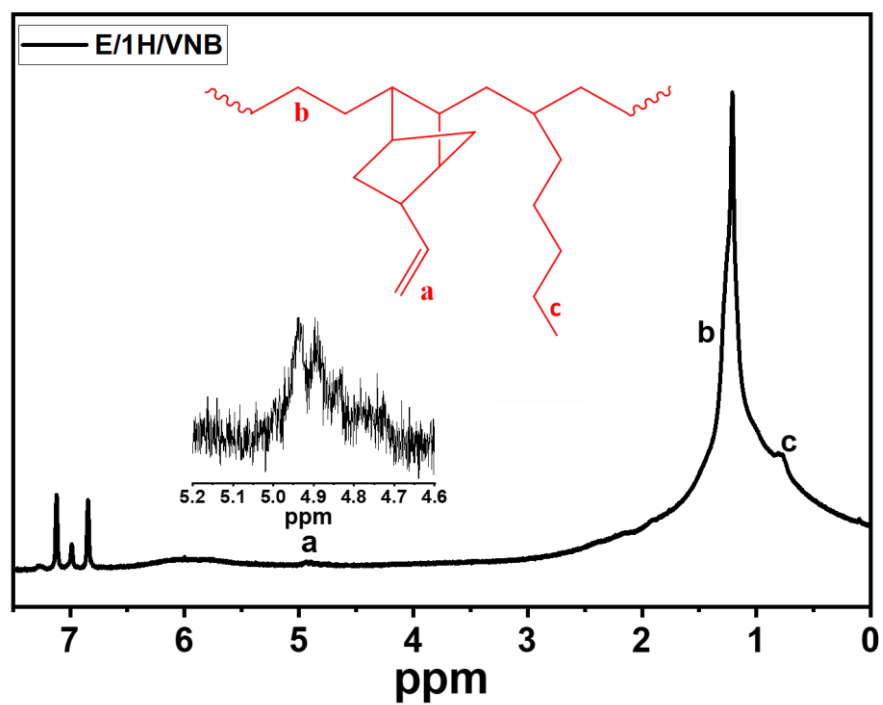


Figure S2b.

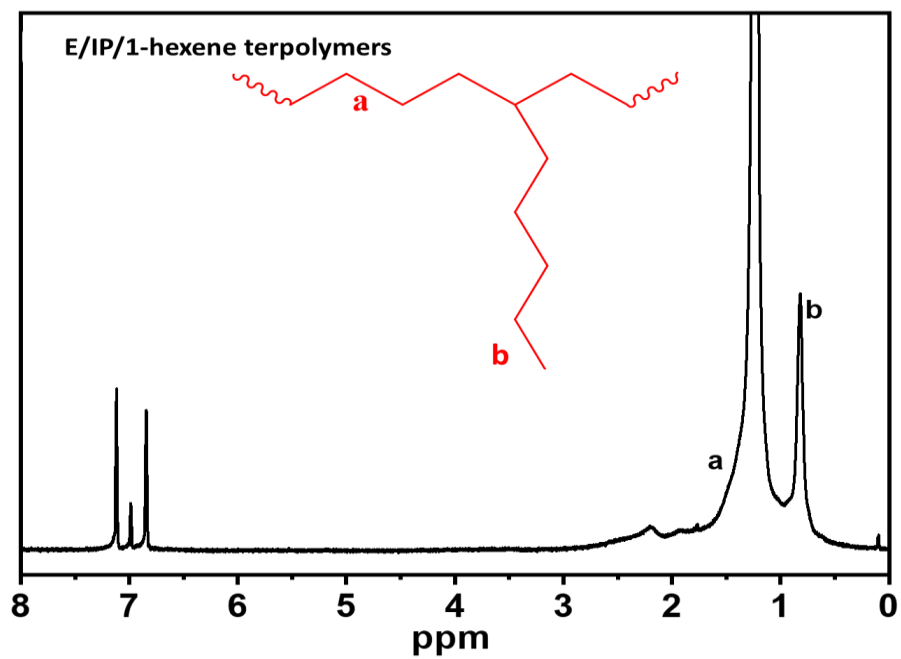
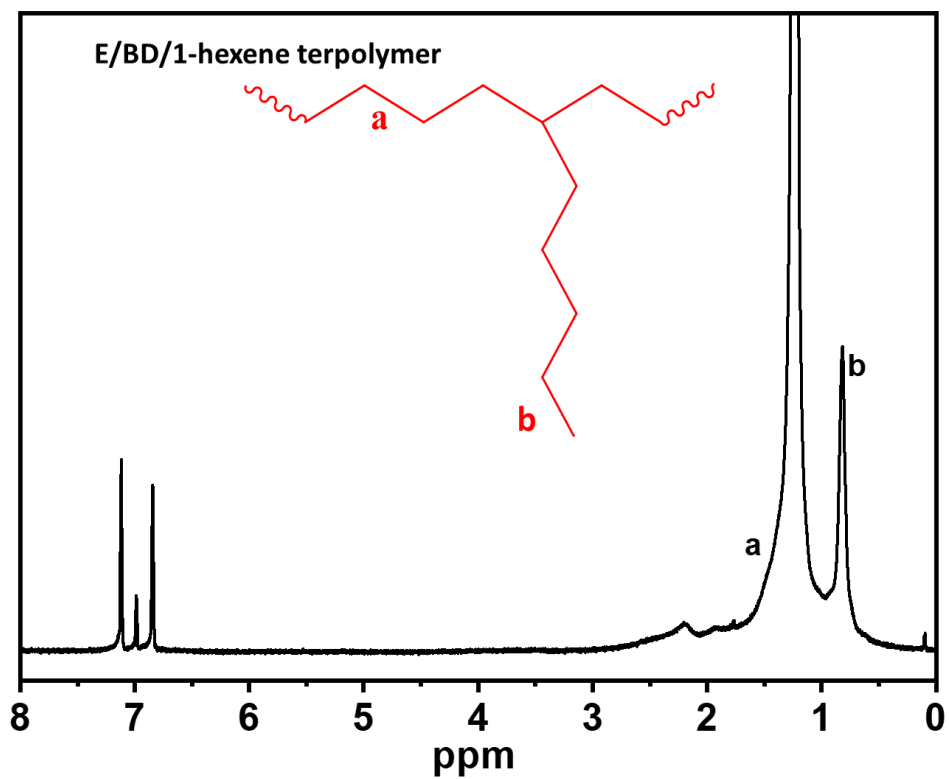


Figure S2c.



Figures S2d

Figures S2a to S2d, the structure of E/diene/1-hexene terpolymers

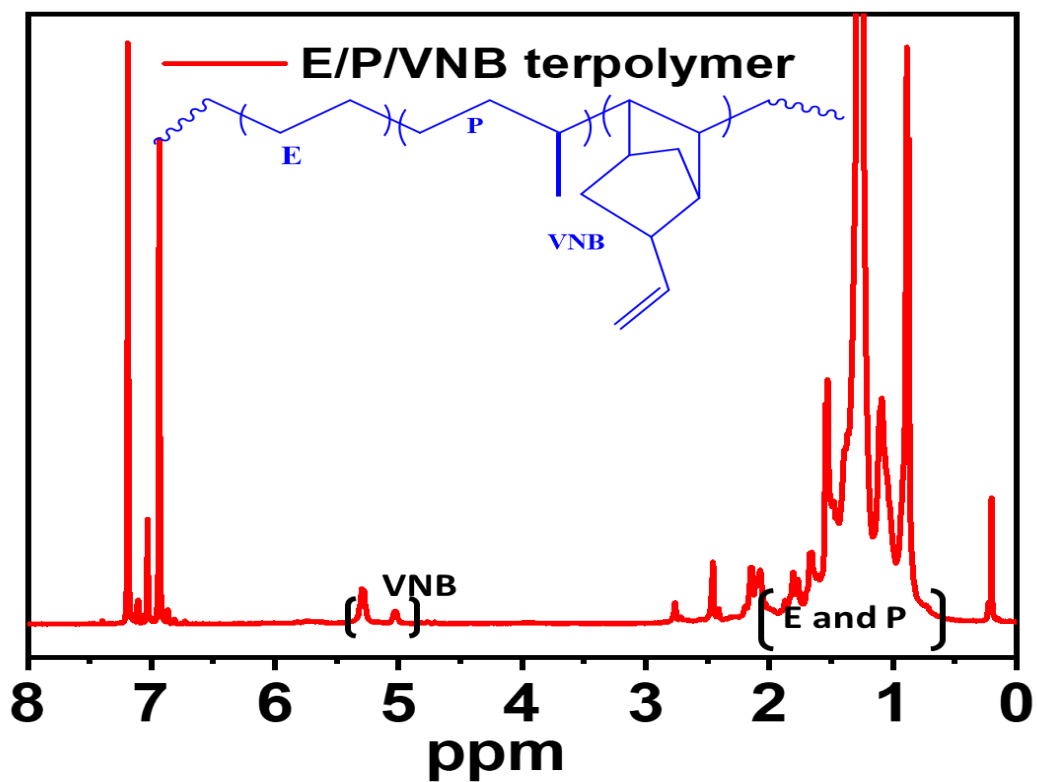


Figure S3a.

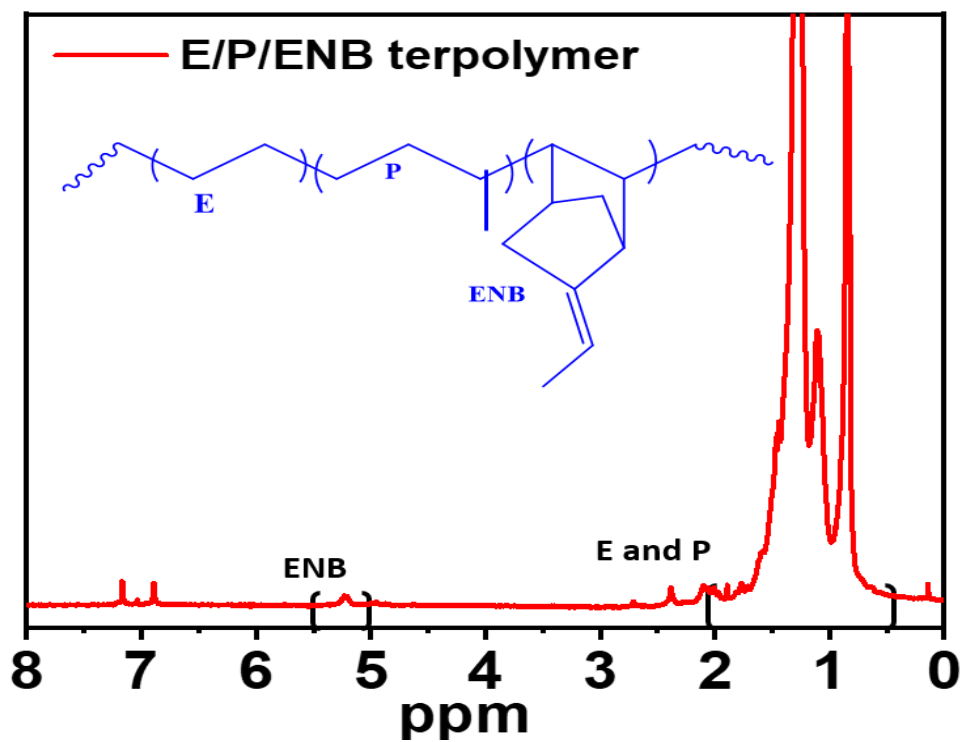


Figure S3b.

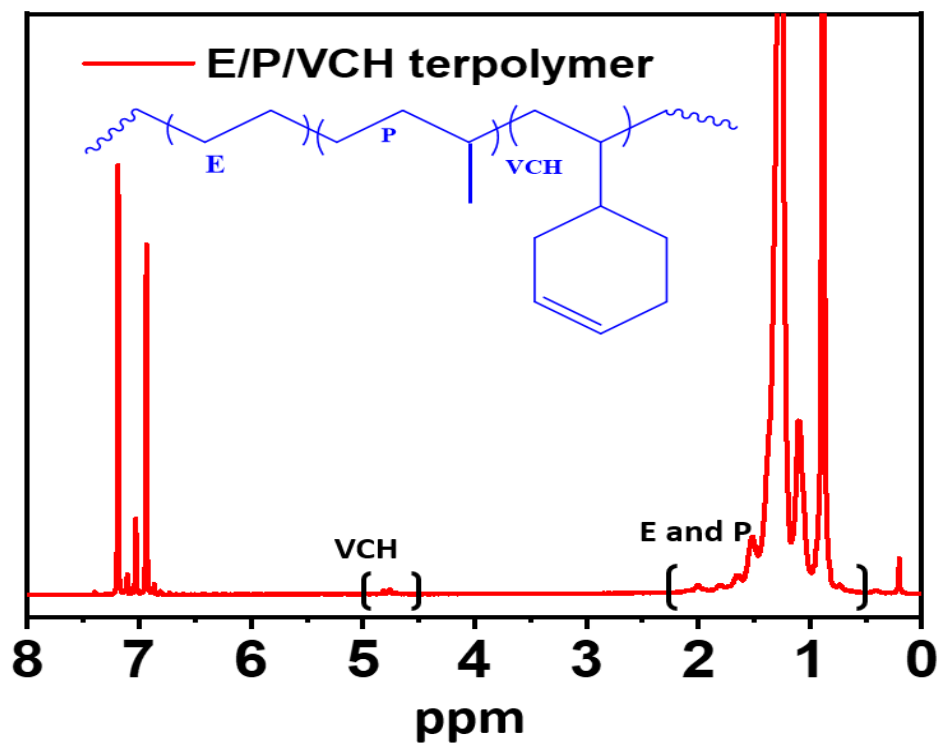


Figure S3c.

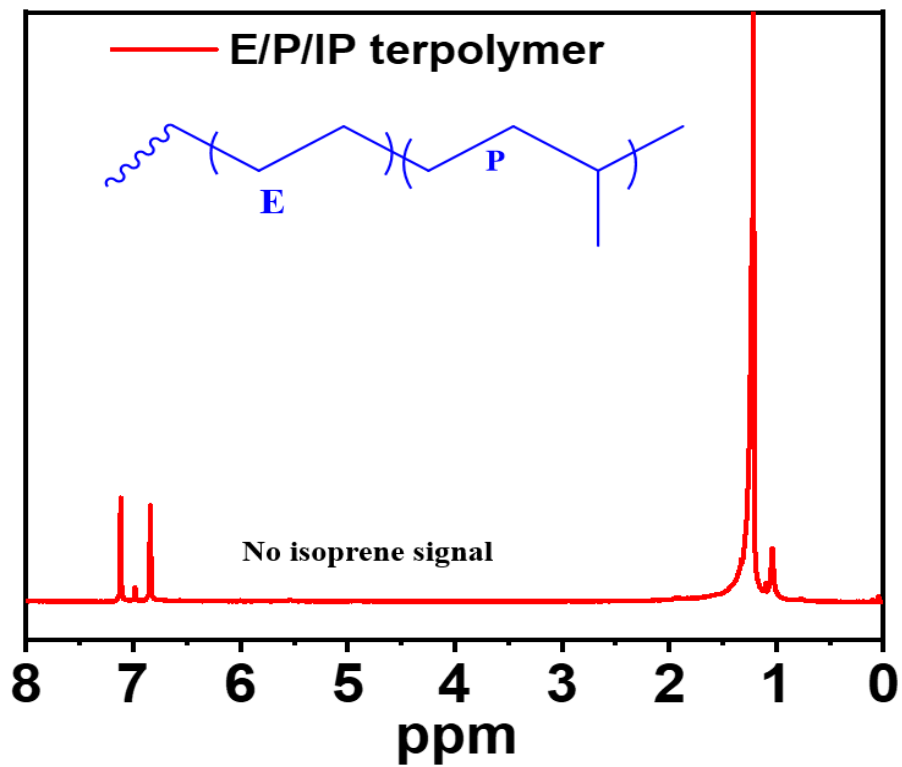


Figure S3d.

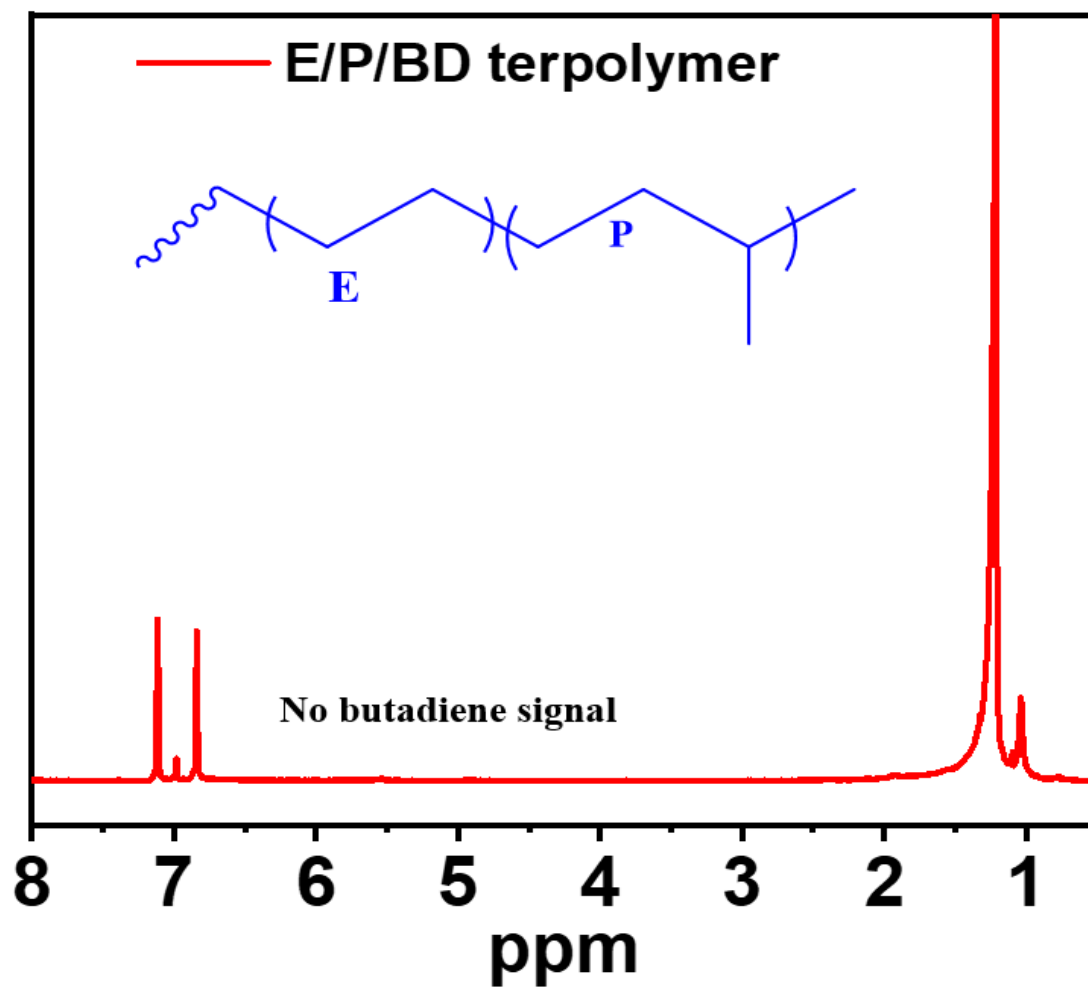


Figure S3e.

Figures S3a to S3e, the structure of E/diene/propylene terpolymers