

Supplementary information

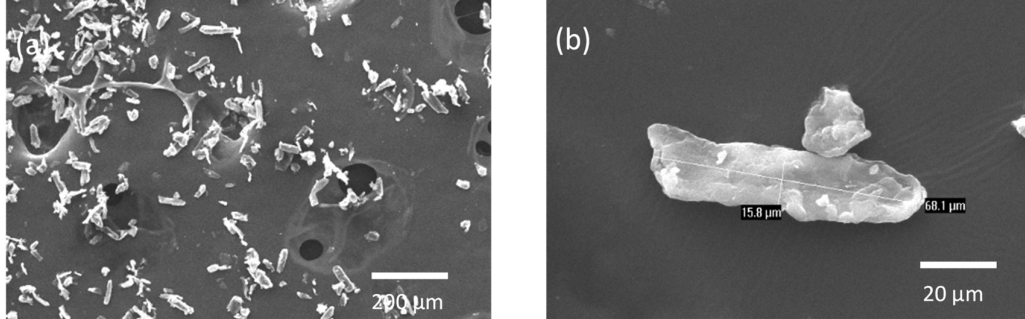


Figure S1. SEM images of MCC particles. **(a)** 100x magnification. **(b)** 1000x magnification.

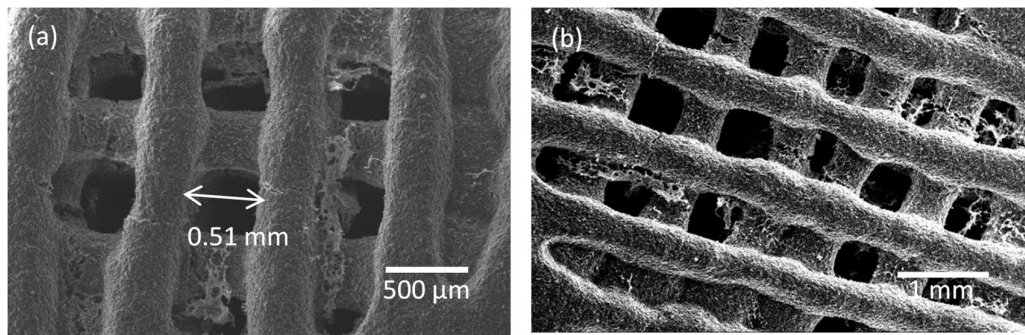


Figure S2. SEM images of the top part of the Alg_MCC₄₀ scaffolds showing the pore width. **(a)** 35x magnification. **(b)** 25x magnification.

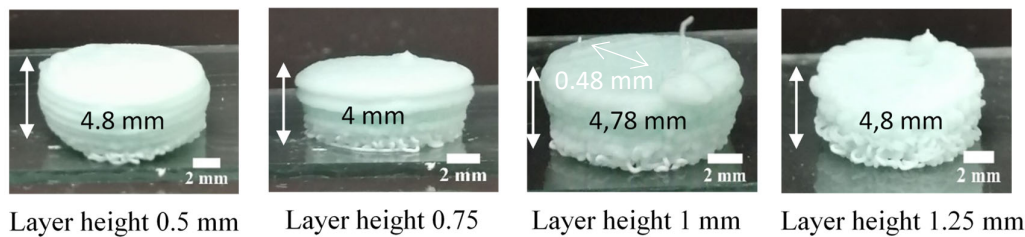


Figure S3. Scaffolds prepared with different layer height. Measurements of the total height of the scaffold were taken.

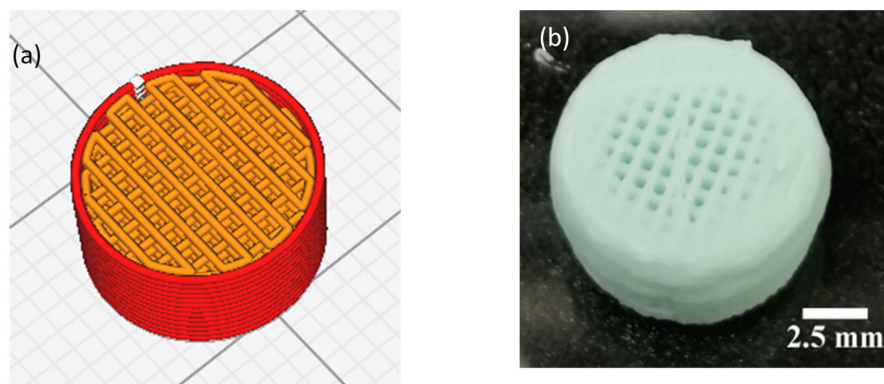


Figure S4. 3D printed scaffold. **(a)** 3D model employed for printing. **(b)** Scaffold obtained from 3D printing.

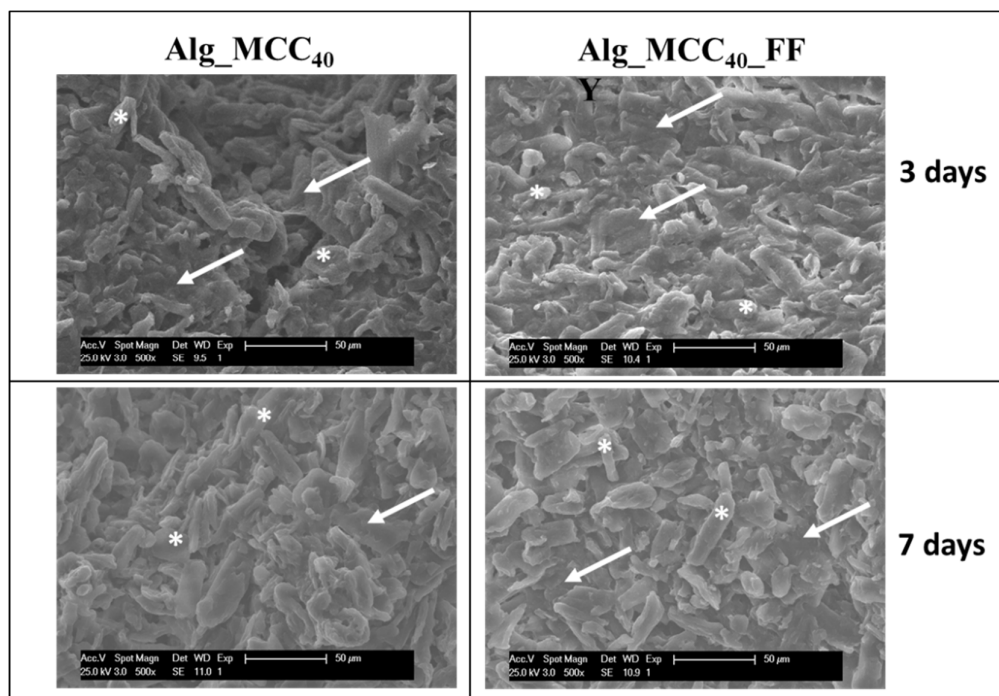


Figure S5. SEM images of the inner part of the scaffolds taken after 3 and 7 days of culture. The images show the characteristic composite microstructure with edged particles of the micro cellulose (white asterisks) and cells (white arrows) embedded within the alginate matrix.