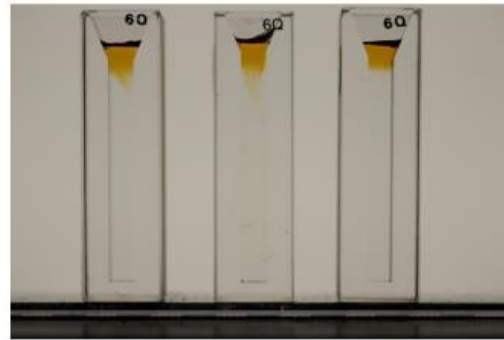


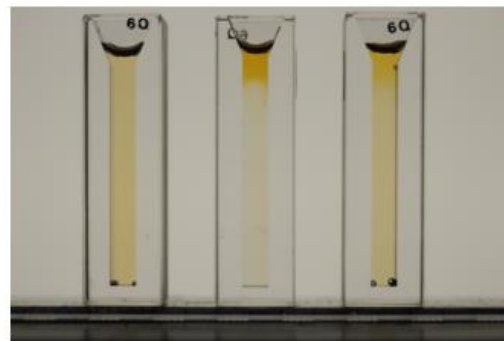
Figure S1. Chemical structures of (a) sodium hyaluronic acid, (b) albumin, (c) hydroxyethyl starch, and (d) Orange G.

0 h



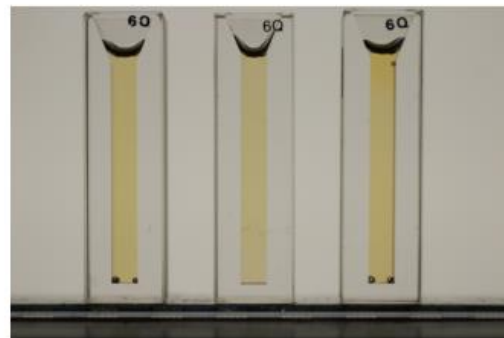
PBS ALB HES

10 h



PBS ALB HES

20 h



PBS ALB HES

Figure S2. Direct visualization of Orange G permeation into 0.2% sodium hyaluronic acid in phosphate buffered saline (PBS), 1% albumin solution (ALB), and hydroxyethyl starch solution (HES) in ultraviolet cuvette at 37°C.