

Supplementary Information

Cellulose-based films with ultraviolet shielding performance prepared directly from waste corrugated pulp

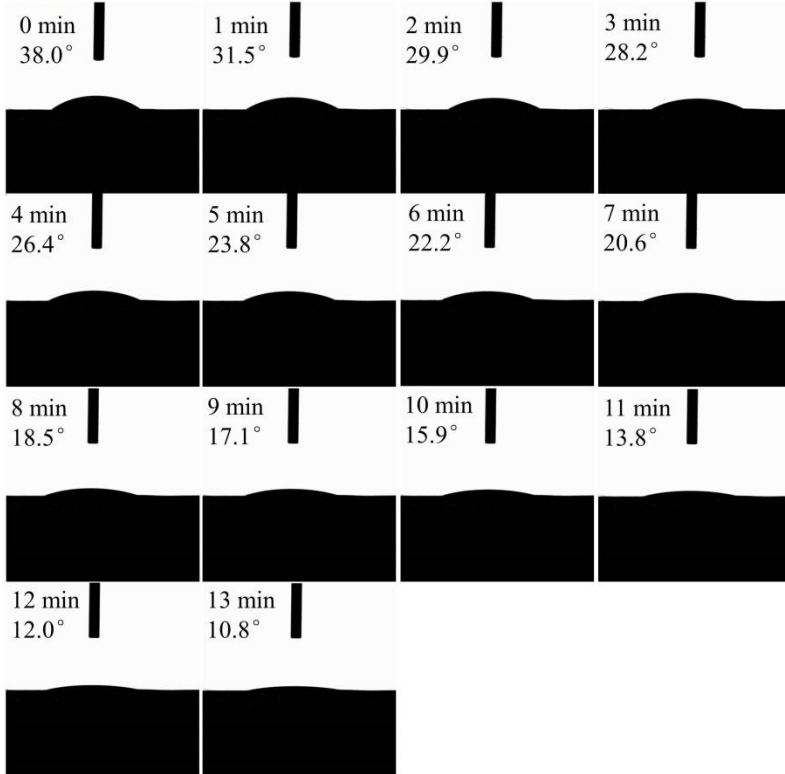
Guangmei Xia^{1,}, Qiwen Zhou¹, Zhen Xu¹, Jinming Zhang^{2,*}, Xingxiang Ji^{1,*}, Jun Zhang², Haq Nawaz², Jie Wang¹ and Jianfeng Peng¹*

1 State Key Laboratory of Biobased Material and Green Papermaking, Qilu University of Technology, Shandong Academy of Sciences, Jinan, 250353, Shandong, China; biliqwzhou@163.com (Q.Z.); xz521953@qlu.edu.cn(Z.X.); 2711544861@qq.com (J.W.); 1966614429@qq.com (J.P)

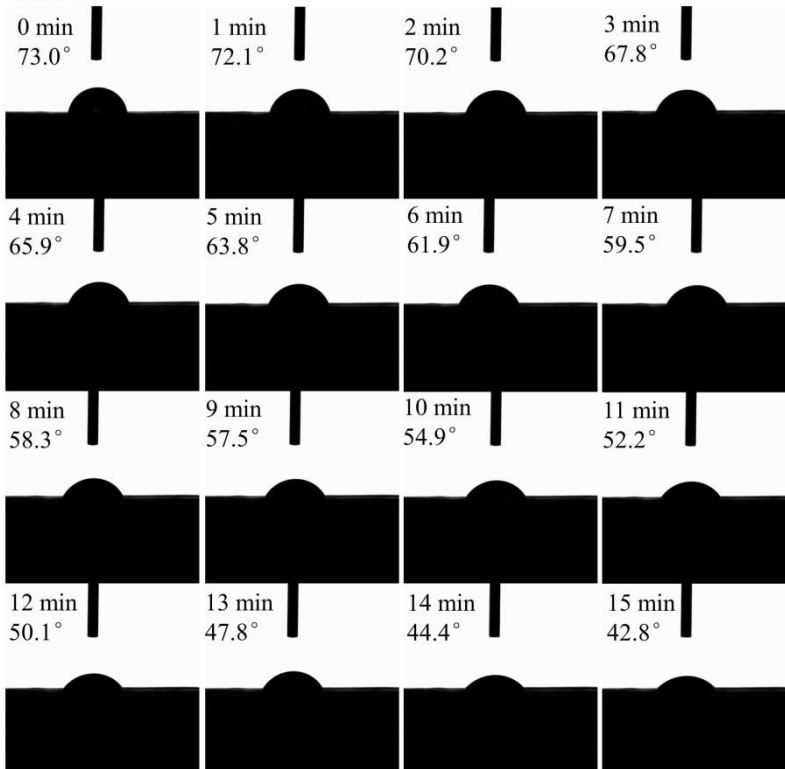
2 Beijing National Laboratory for Molecular Sciences, CAS Key Laboratory of Engineering Plastics, Institute of Chemistry, Chinese Academy of Sciences (CAS), Beijing, 100190, China; jzhang@iccas.ac.cn (J. Z.); haqnawaz@bjfu.edu.cn (H.N.)

* Correspondence: gmxia@qlu.edu.cn (G.X.); zhjm@iccas.ac.cn (J.Z.); xxjt78@163.com (X.J.)

C-film



Film-W



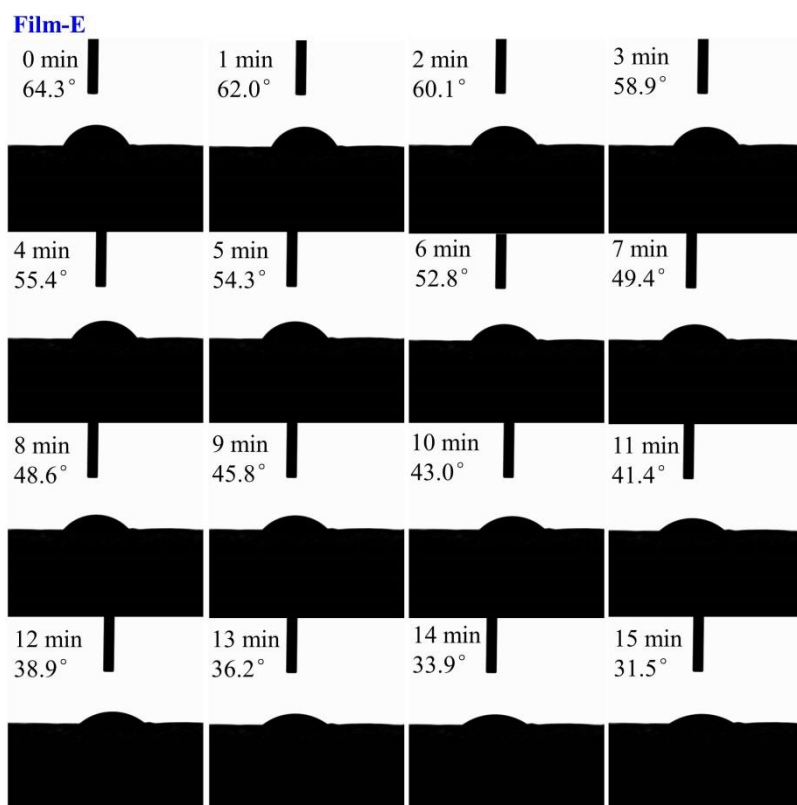


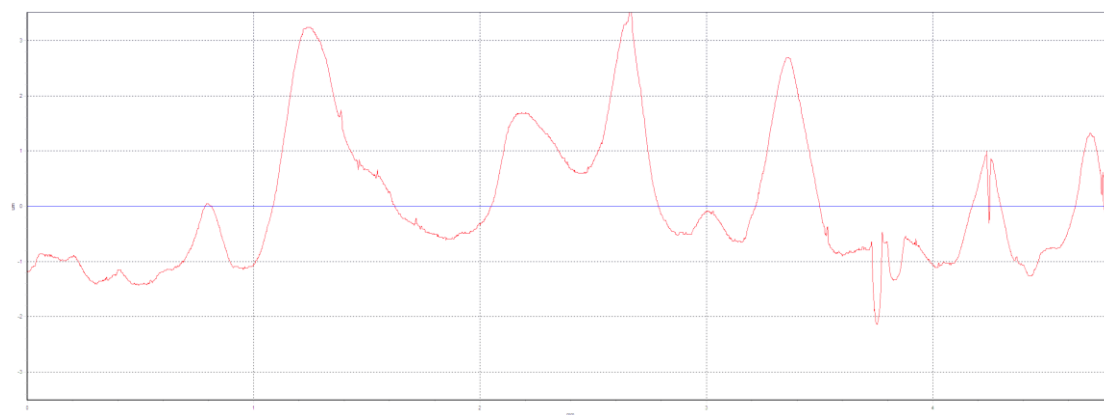
Fig. S1. Time-dependent evaluation of the contact angle of C-film, Film-W and Film-E.

Table S1. The surface roughness of C-film, Film-W and Film-E.

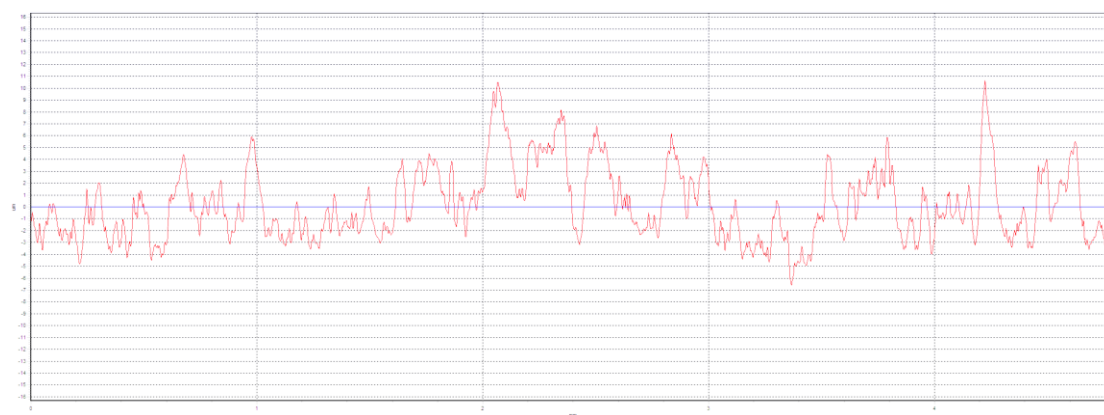
Sample	Surface roughness (Ra, μm)
C-film	0.534 ± 0.077
Film-W	1.874 ± 0.099
Film-E	2.319 ± 0.659

Note: Ra is the arithmetical mean roughness of the film surface recorded with Jitai RT200 roughness measuring instrument.

C-film



Film-W



Film-E

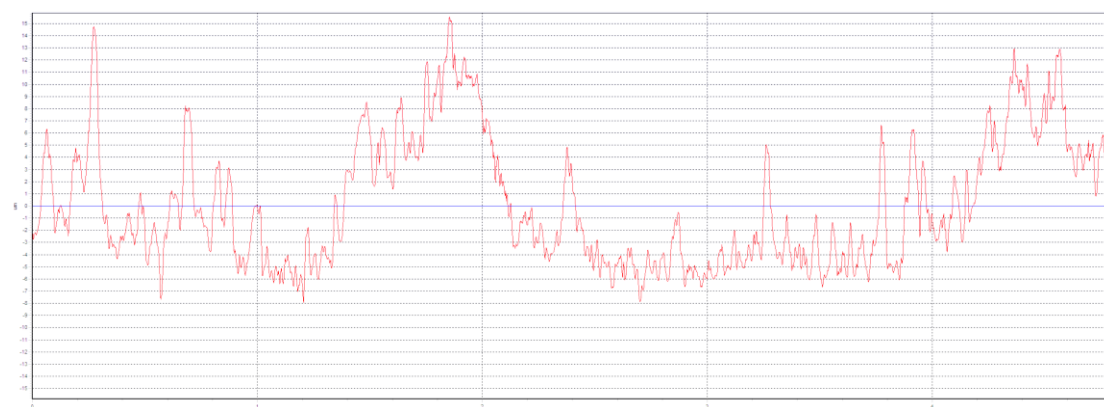


Fig. S2. Surface profiles of C-film, Film-W and Film-E (sampling length=5.0 mm).