

**Supplementary Materials for**

**Study on the Sensing Signal Profiles for Determination of**

**Process Window of Flexible Sensors Based on**

**Surface Treated PDMS/CNT Composite Patches**

Joonwon Bae, Yunjung Hwang, Seon Joo Park,  
Ji-Hwan Ha, Hye Jun Kim, Ayeon Jang, Jaieun An,  
Chang-Soo Lee,\* Sung-Hoon Park\*

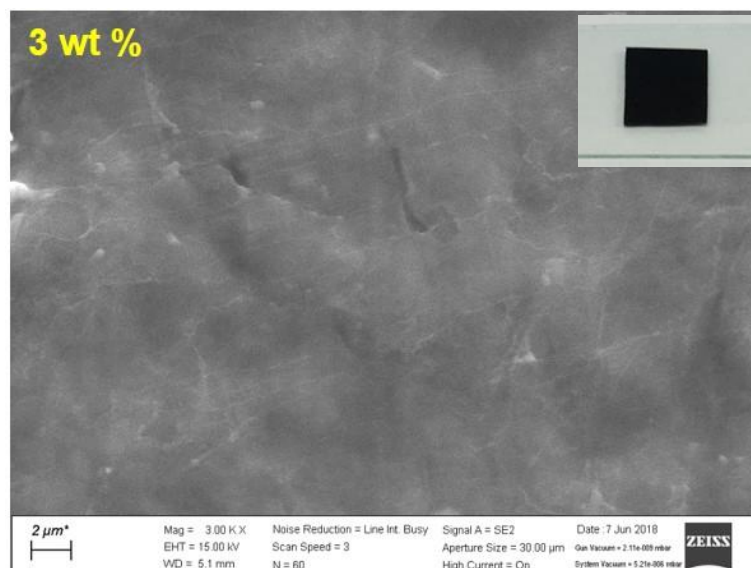


Figure S1. A photograph and a top-view SEM image of the PDMS/CNT composite patch containing 3 wt % CNT.

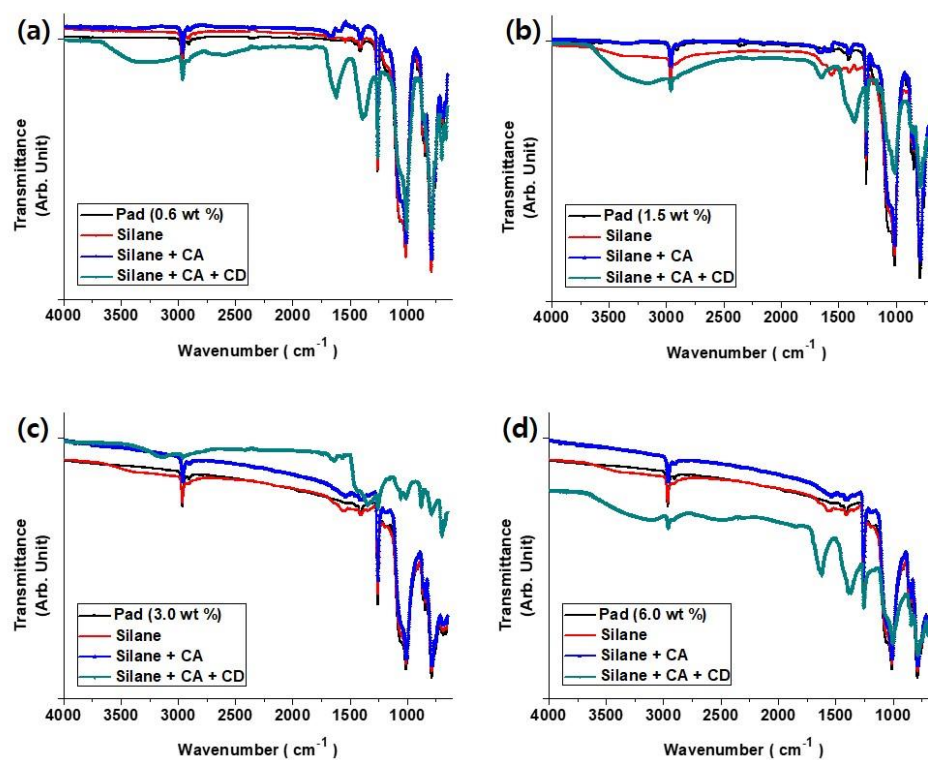


Figure S2. FT-IR spectra of PDMS/CNT composite patched as a function of CNT weight fraction obtained after each surface modification steps.

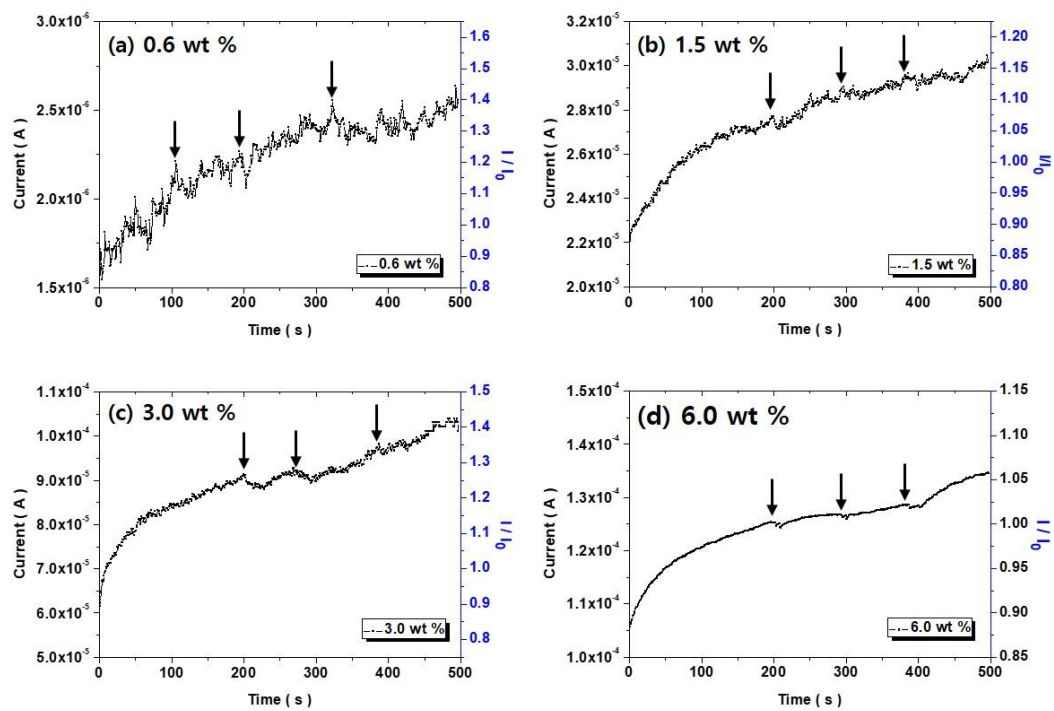


Figure S3. Sensor signals obtained with PDMS/CNT composite patches after introduction of pure solvent to the sensor system.

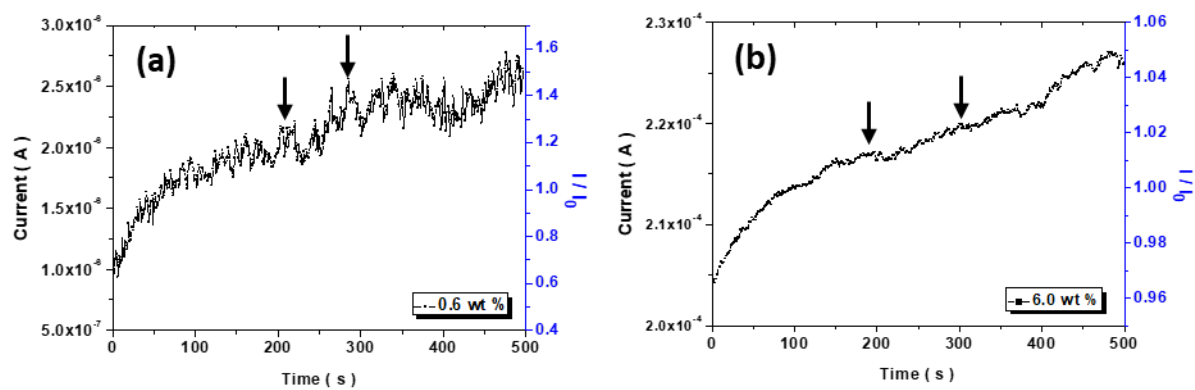


Figure S4. Sensor signals obtained with PDMS/CNT composite patches after introduction of 1 nmol solution to the sensor system.