

## Supporting information

### **Bimetallic aluminum 5,6-dihydro-7,7-dimethylquinolin-8-olates as pro-initiators for the ROP of $\epsilon$ -CL; probing the nuclearity of the active species**

Qiurui Zhang, Wenjuan Zhang, Gregory A. Solan, TonglingLiang, and Wen-Hua Sun

#### **Contents**

**Figure S1-S4: The  $^1\text{H}$  NMR and MALDI-TOF spectrum of PCL obtained by C1 with different amount BnOH**

**Figure S1.** The  $^1\text{H}$  NMR and MALDI-TOF spectrum of PCL by **C1+2BnOH**

**Figure S2.** The  $^1\text{H}$  NMR and MALDI-TOF spectrum of PCL by **C1+4BnOH**

**Figure S3.** The  $^1\text{H}$  NMR and MALDI-TOF spectrum of PCL by **C1+5BnOH**

**Figure S4.** The  $^1\text{H}$  NMR and MALDI-TOF spectrum of PCL by **C1+10BnOH**

**Figure S5-S9: The MALDI-TOF spectrum of PCL obtained by C2-C6/BnOH**

**Figure S5.** The  $^1\text{H}$  NMR and MALDI-TOF spectrum of PCL by **C2/BnOH**

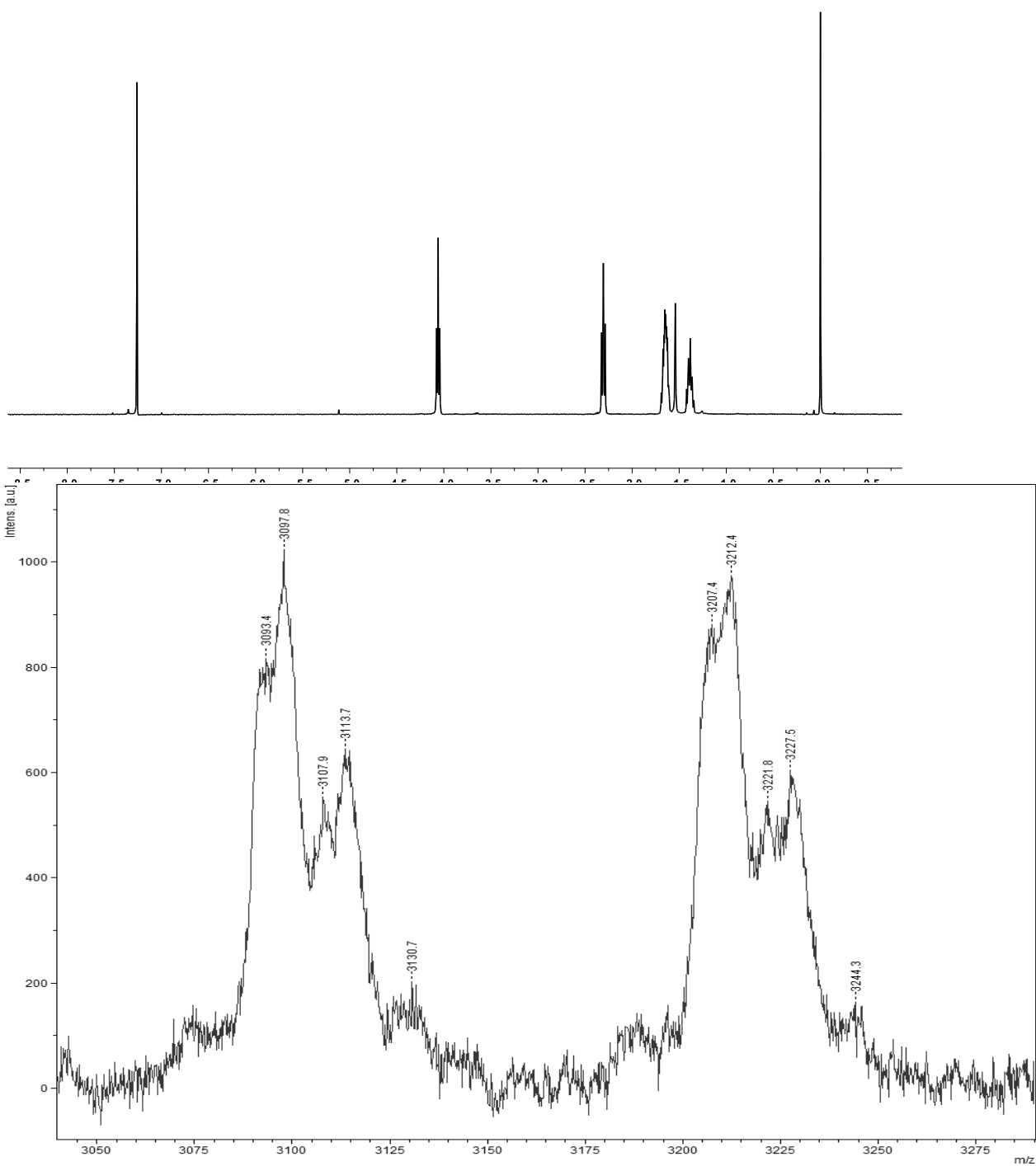
**Figure S6.** The  $^1\text{H}$  NMR and MALDI-TOF spectrum of PCL by **C3/BnOH**

**Figure S7.** The  $^1\text{H}$  NMR and MALDI-TOF spectrum of PCL by **C4/BnOH**

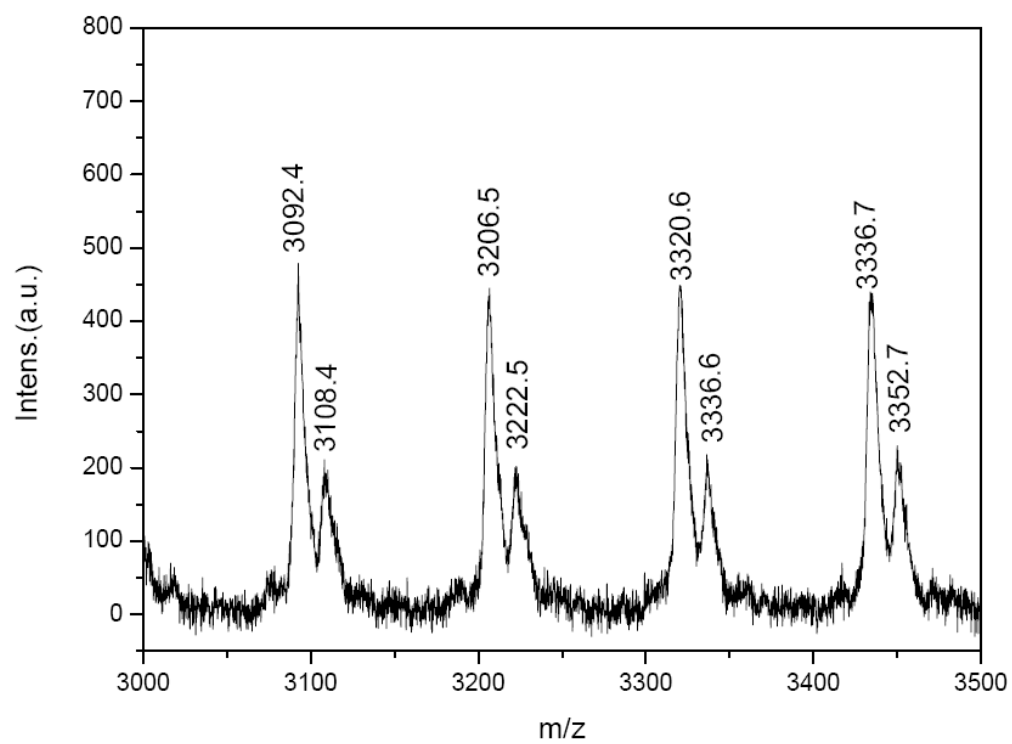
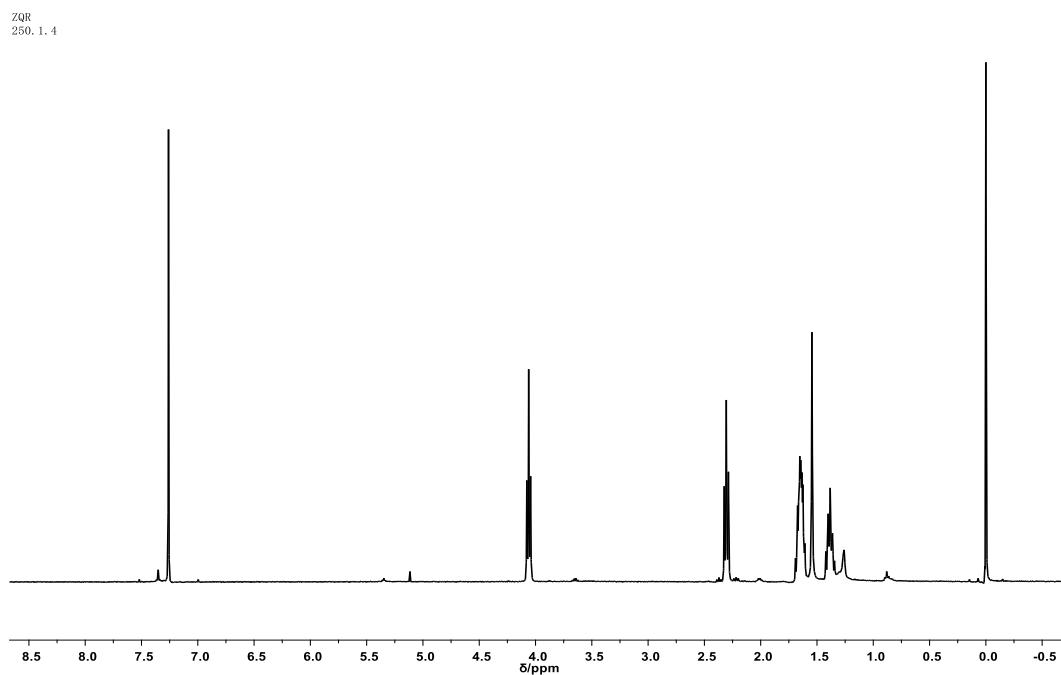
**Figure S8.** The  $^1\text{H}$  NMR and MALDI-TOF spectrum of PCL by **C5/BnOH**

**Figure S9.** The  $^1\text{H}$  NMR and MALDI-TOF spectrum of PCL by **C6/BnOH**

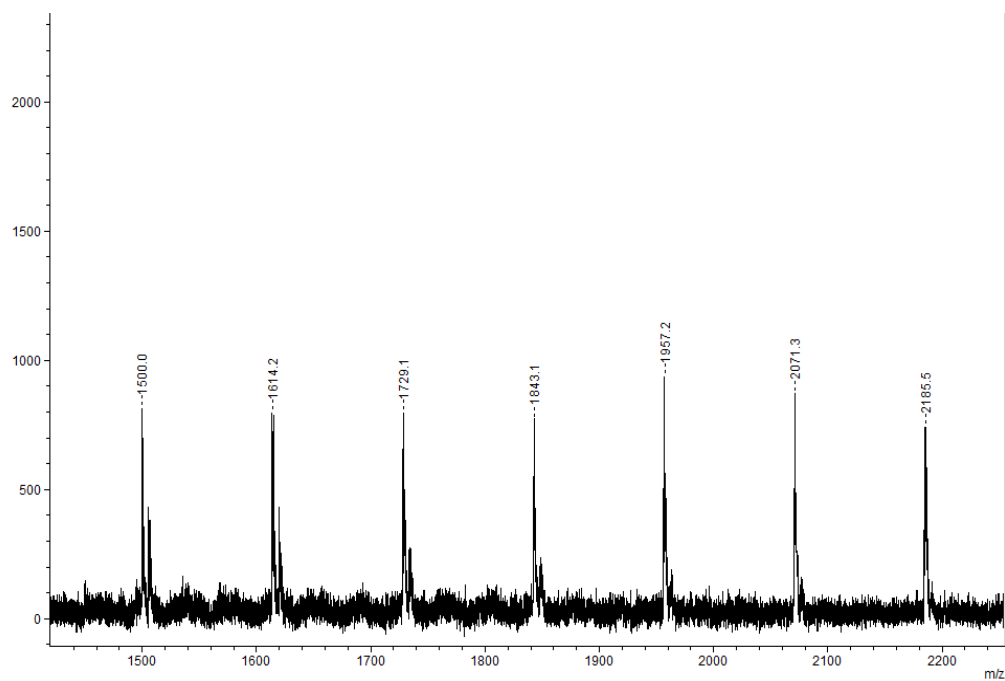
ZQR  
250.1.2-PCL



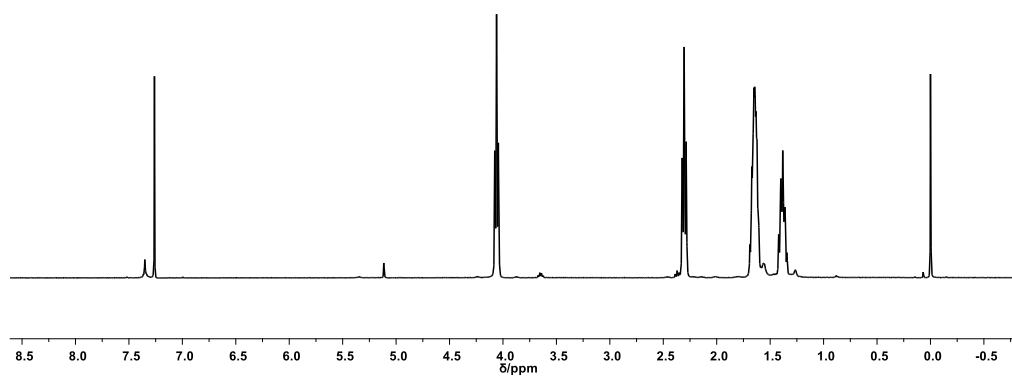
**Figure S1** The  $^1\text{H}$  NMR and MALDI-TOF spectrum of PCL by  $\text{C1}+2\text{BnOH}$ .



**Figure S2** The  $^1\text{H}$  NMR and MALDI-TOF spectrum of PCL by **C1+4BnOH**.

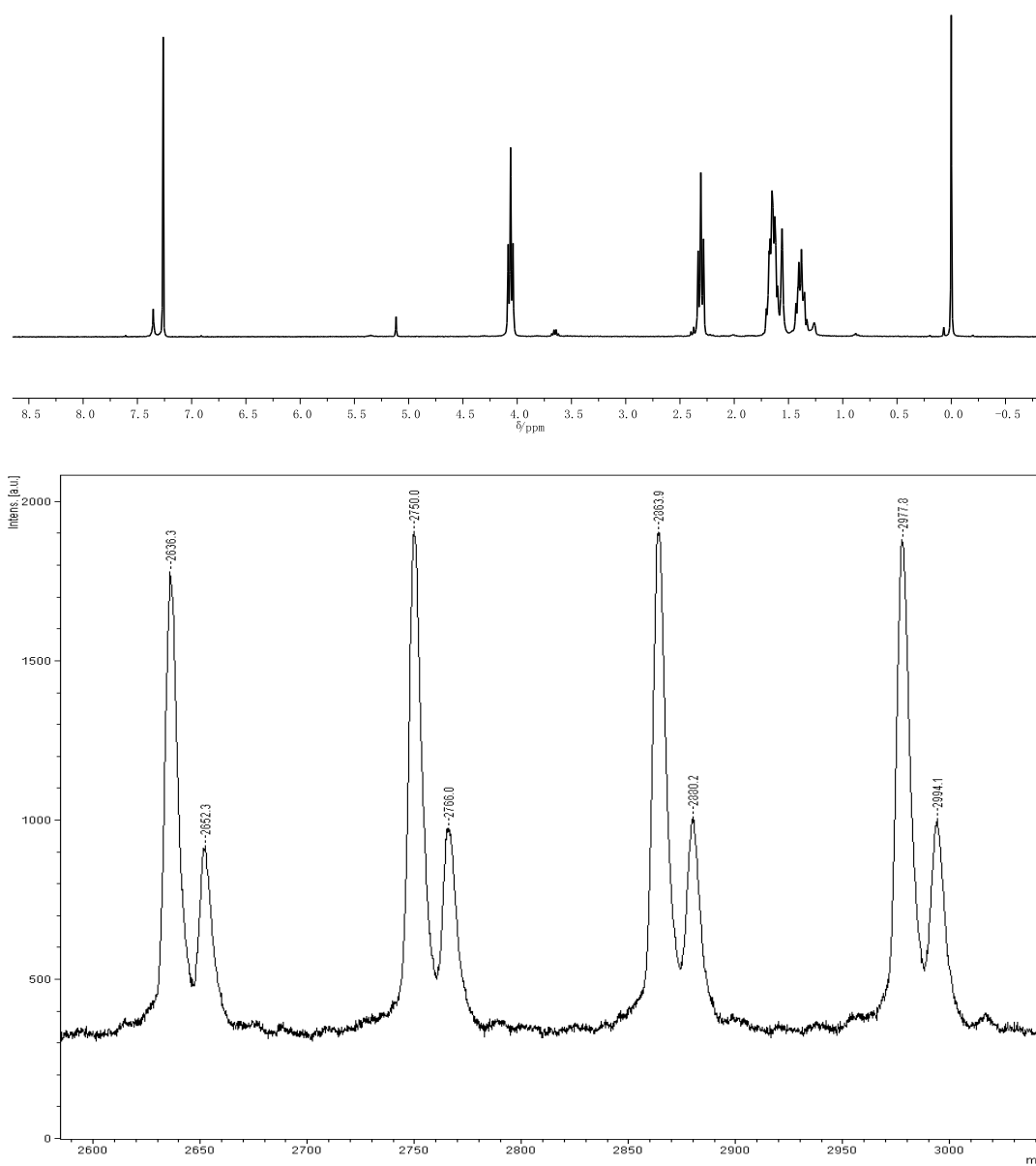


ZQR  
250.1.5-PCL

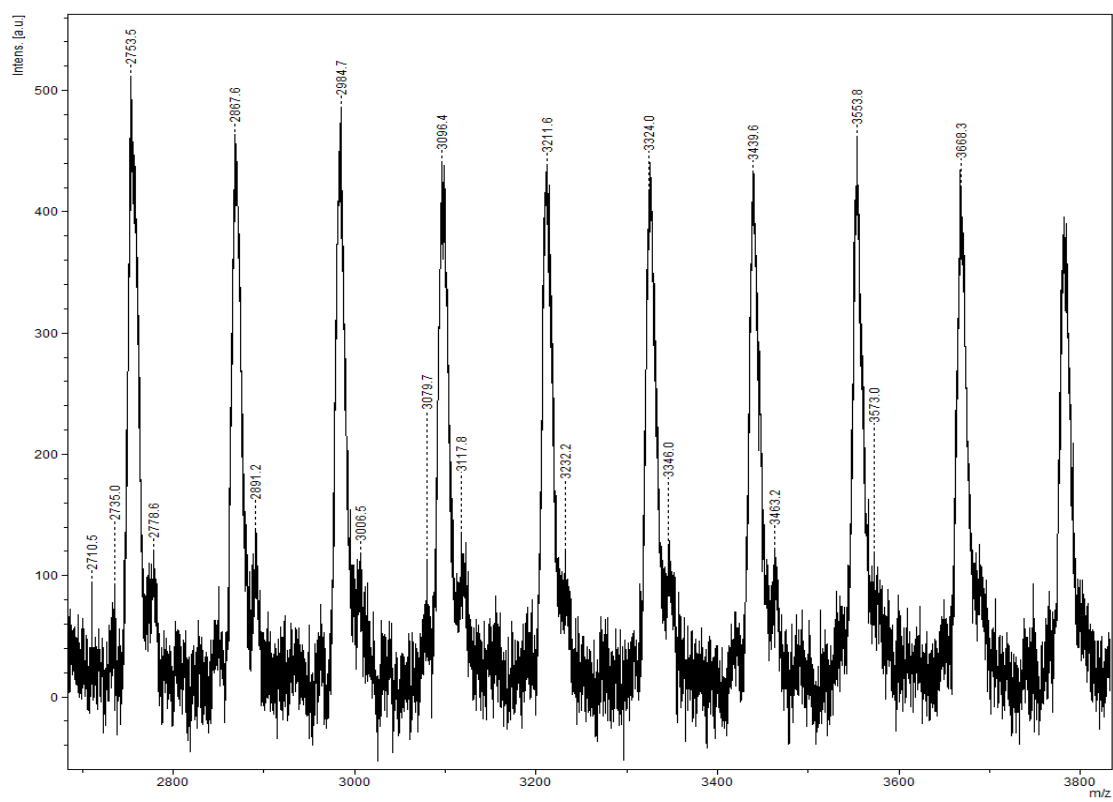
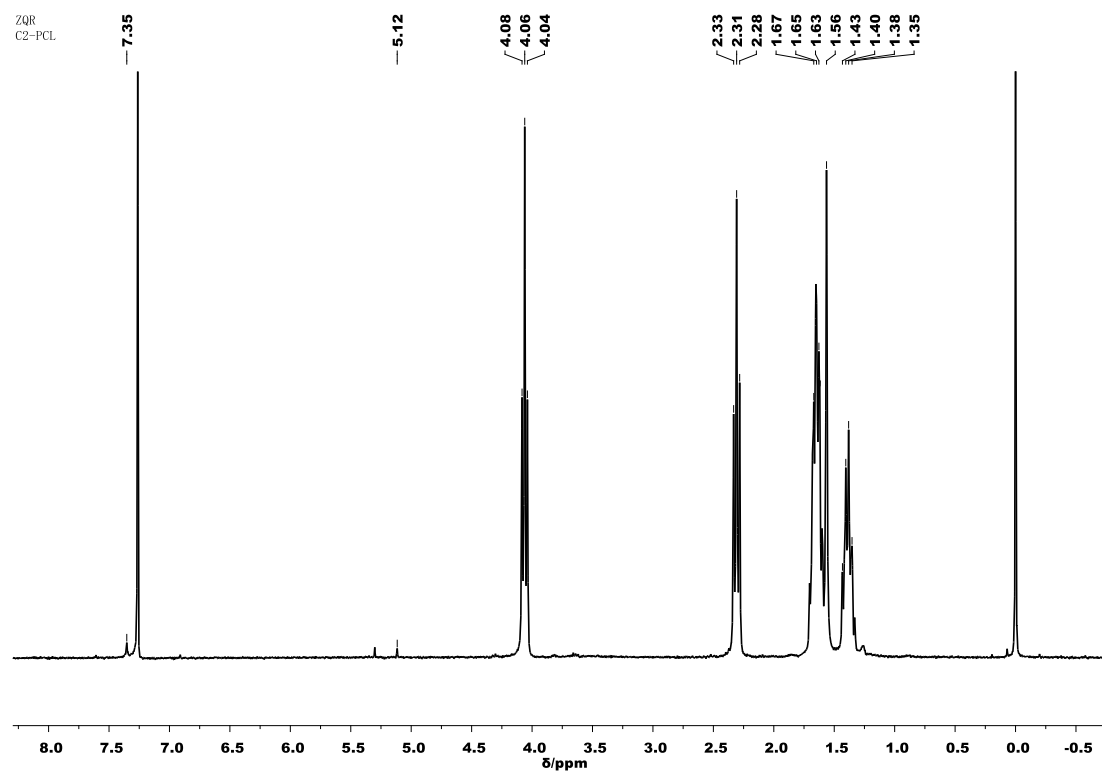


**Figure S3** The <sup>1</sup>H NMR and MALDI-TOF spectrum of PCL by **C1+5BnOH**.

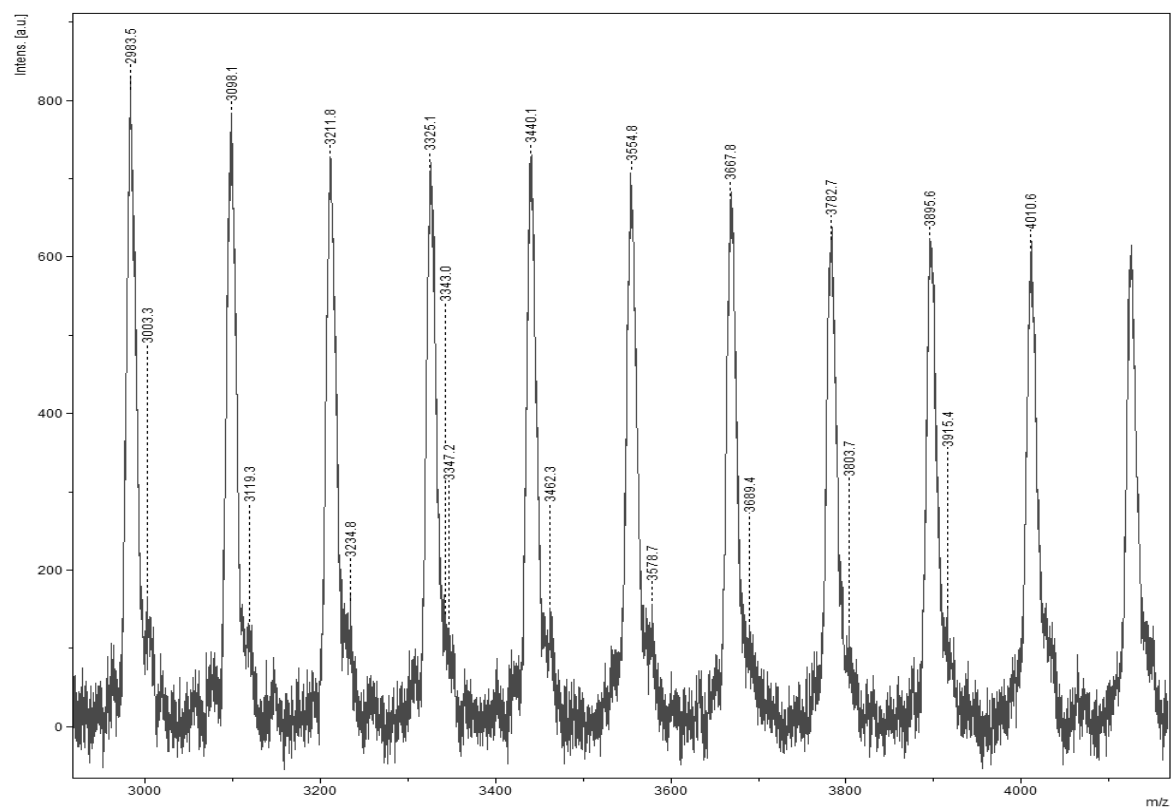
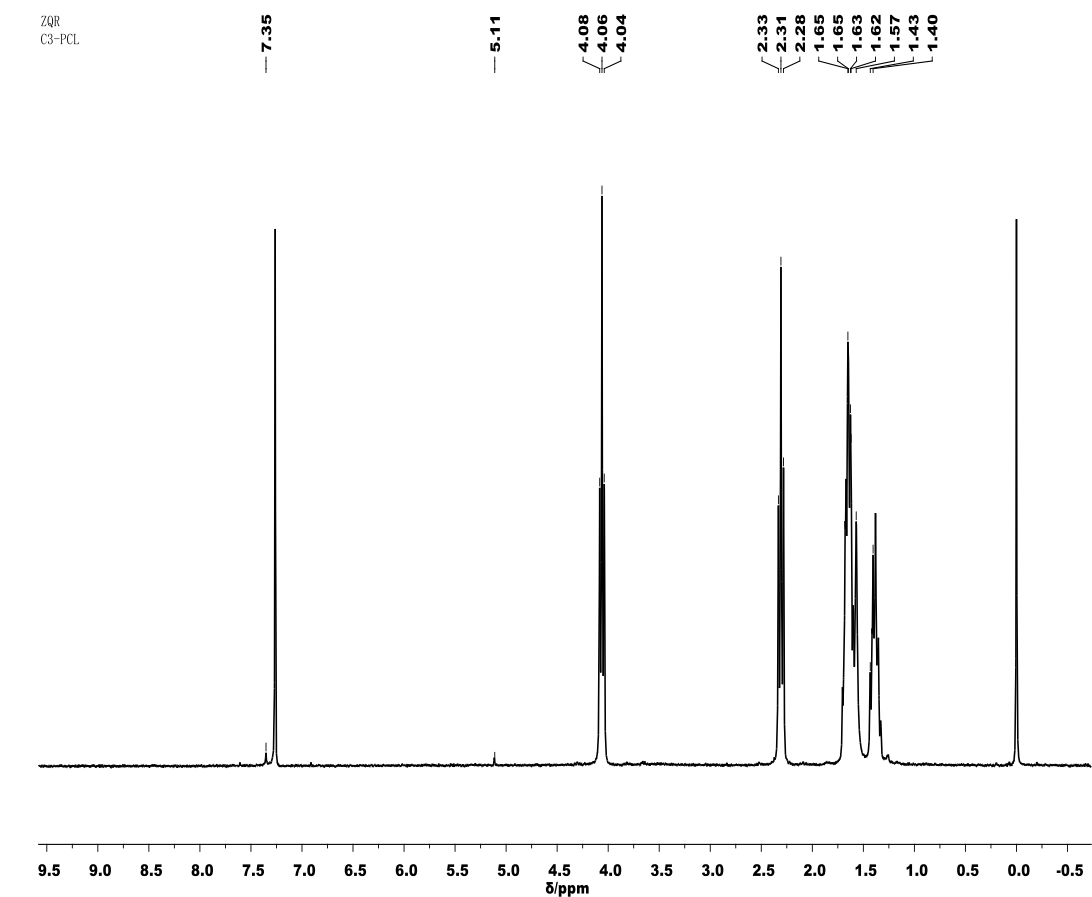
ZQR  
170425-PCL-250.1.10



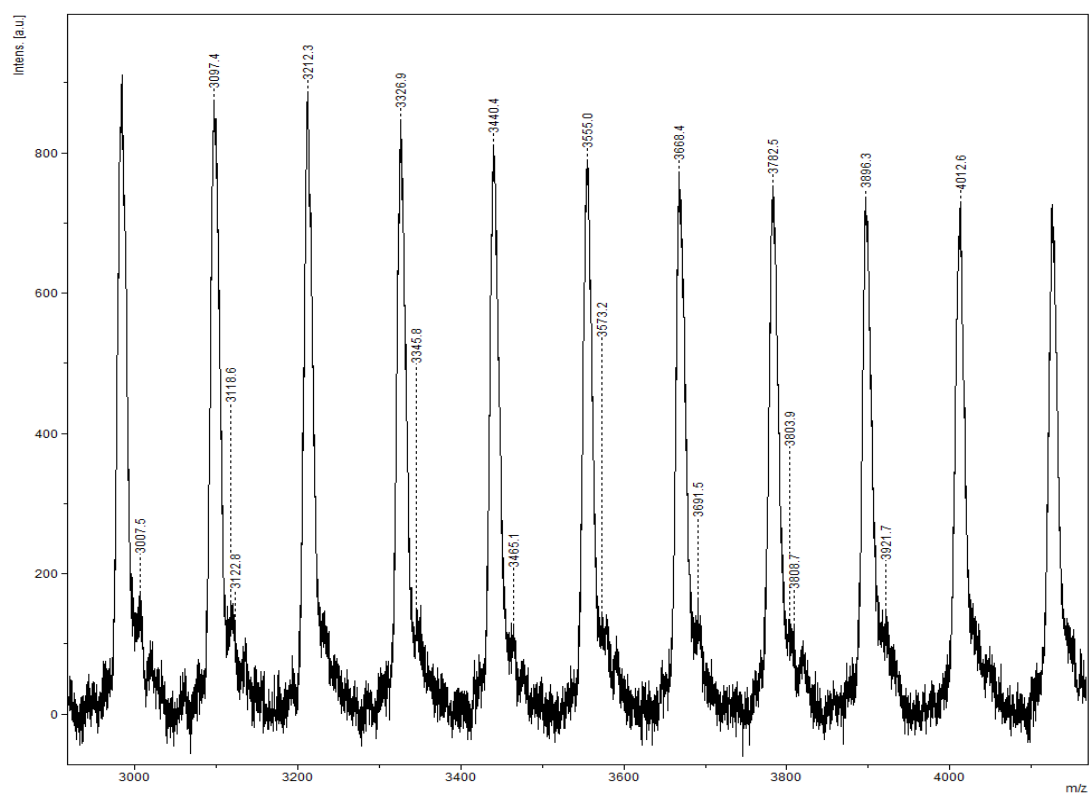
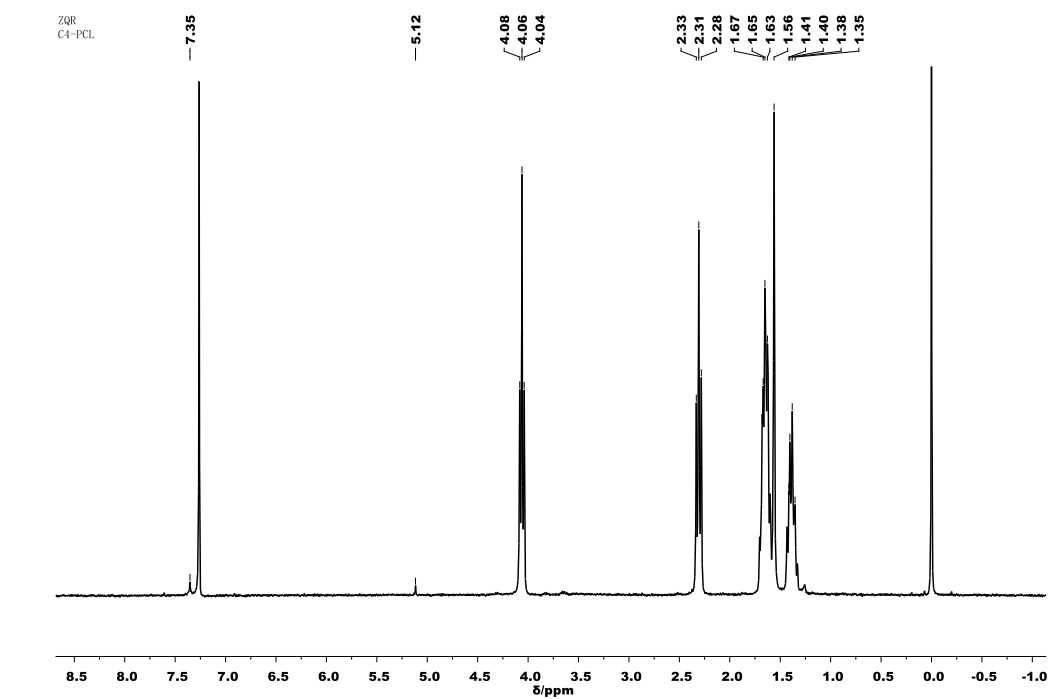
**Figure S4** The  $^1\text{H}$  NMR and MALDI-TOF spectrum of PCL by **C1+10BnOH**.



**Figure S5** The  $^1\text{H}$  NMR and MALDI-TOF spectrum of PCL by C2/BnOH.

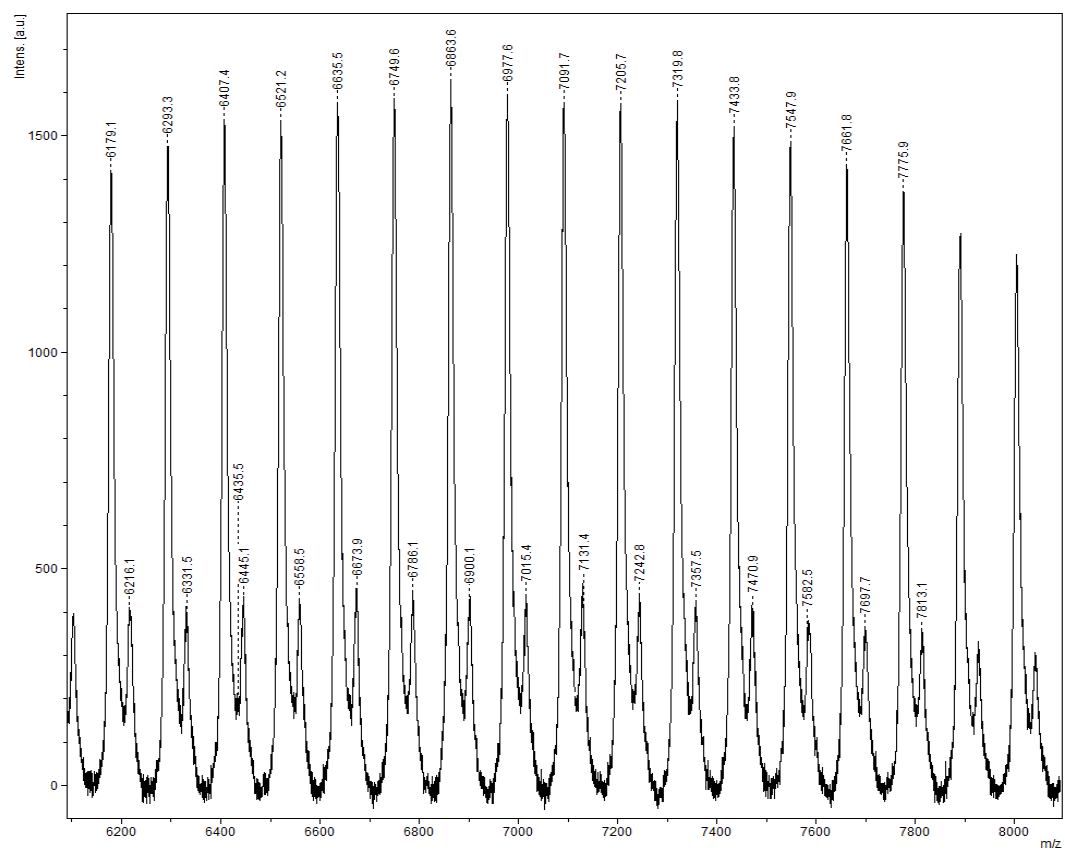
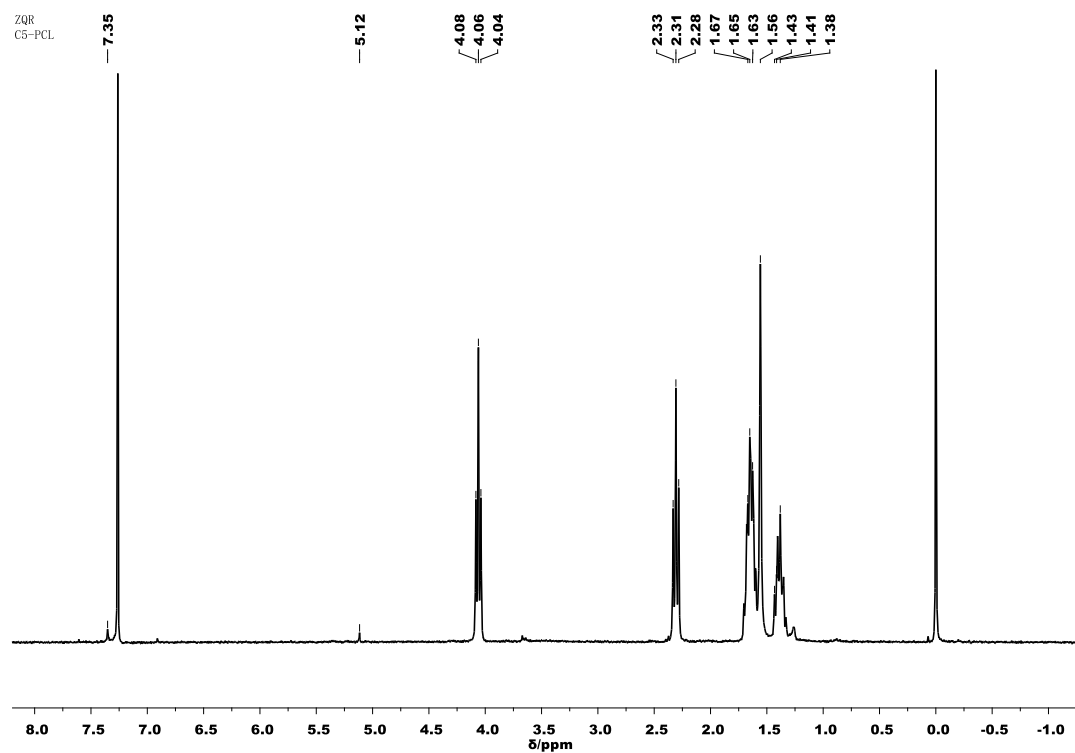


**Figure S6** The  $^1\text{H}$  NMR and MALDI-TOF spectrum of PCL by **C3/BnOH**.

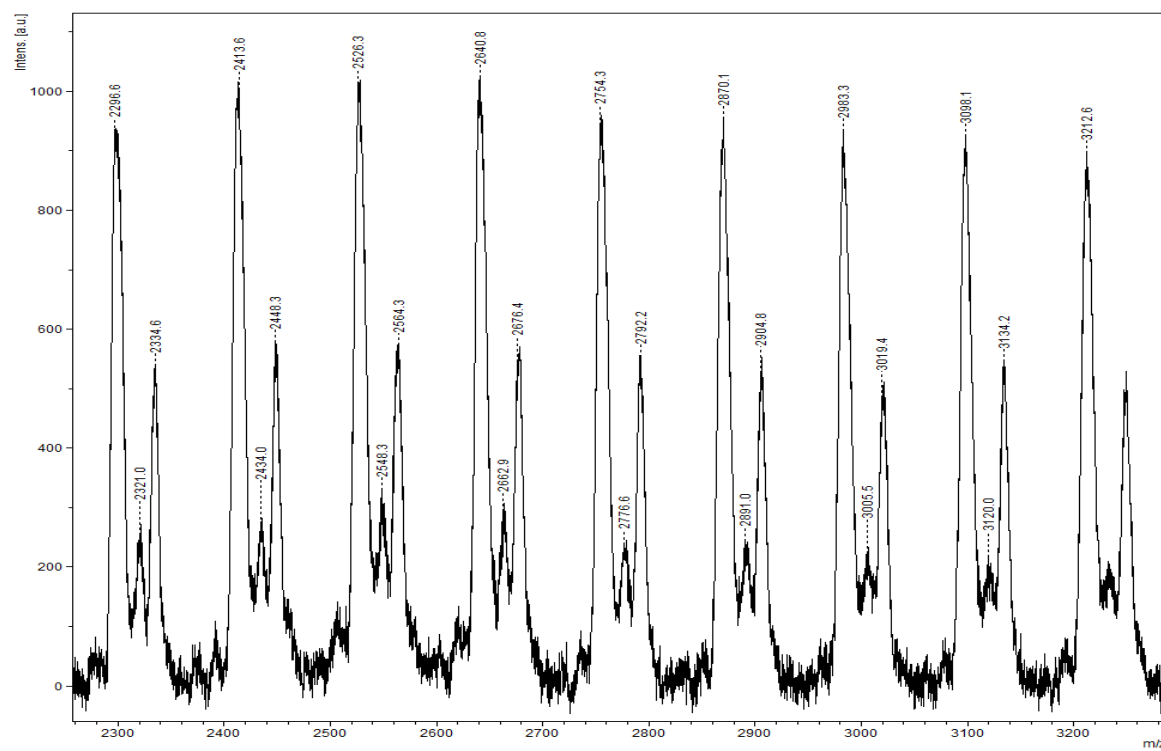
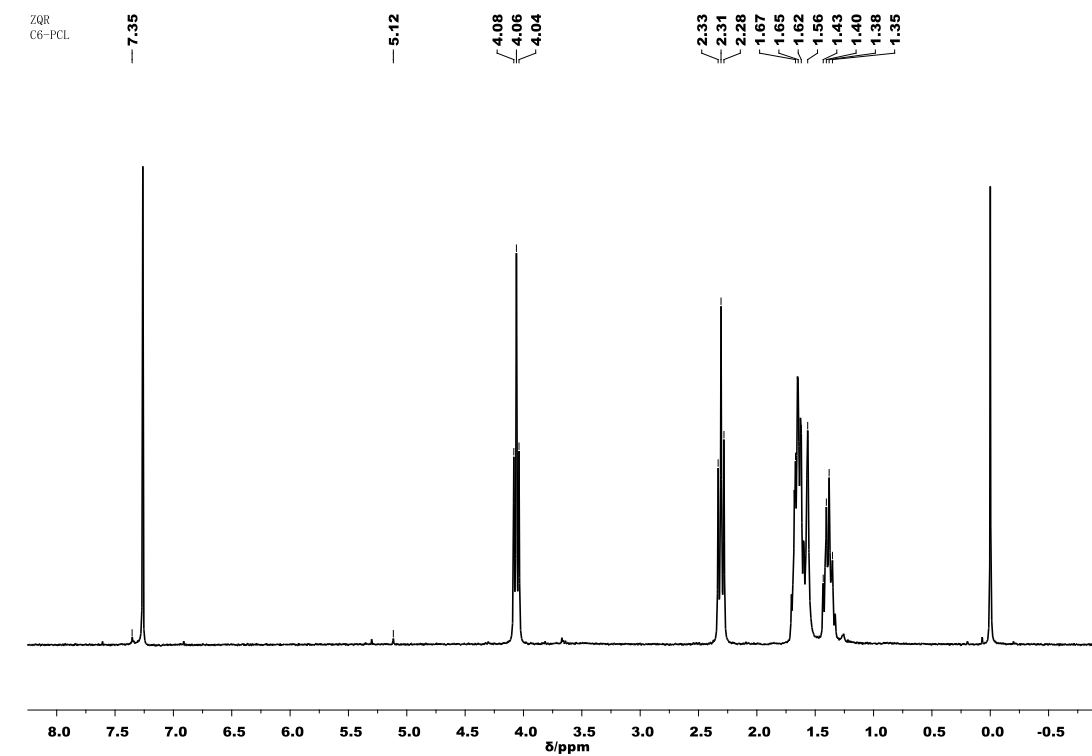


**Figure S7** The  $^1\text{H}$  NMR and MALDI-TOF spectrum of PCL by **C4/BnOH**.





**Figure S8** The  $^1\text{H}$  NMR and MALDI-TOF spectrum of PCL by **C5/BnOH**.



**Figure S9** The <sup>1</sup>H NMR and MALDI-TOF spectrum of PCL by C6/BnOH.