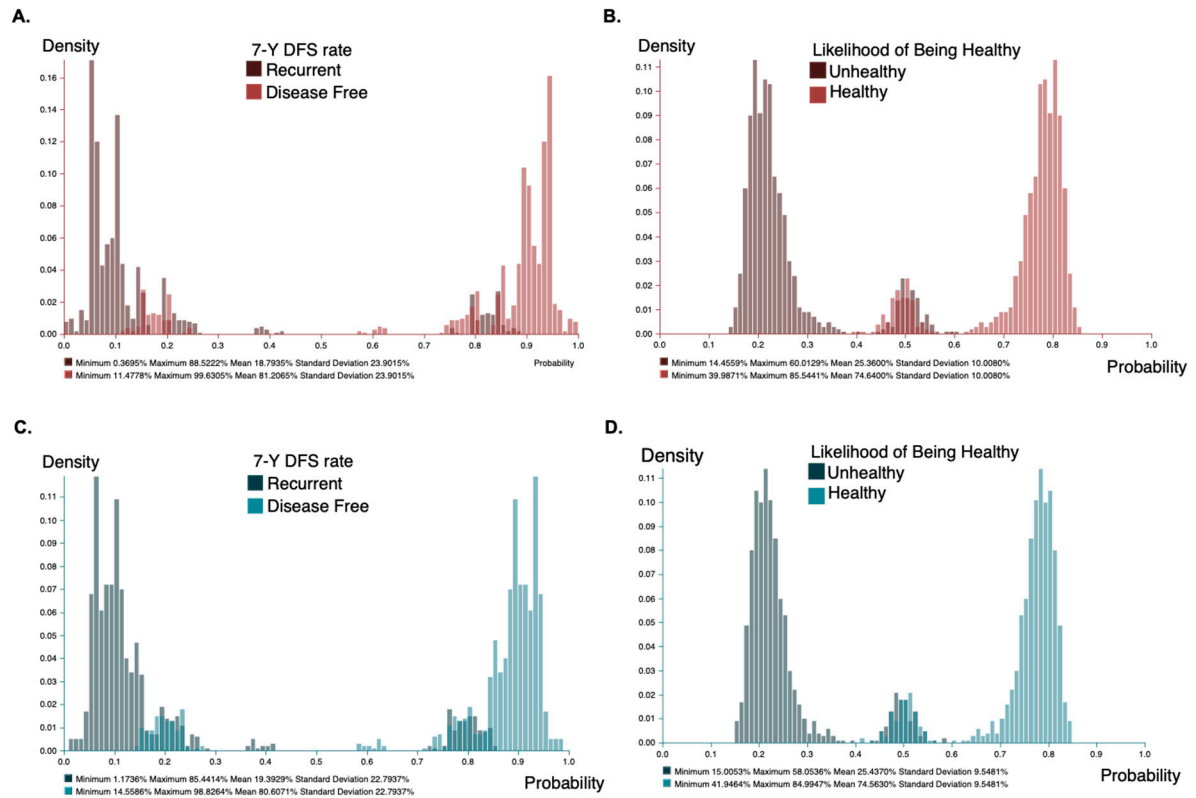


	Control group		Experimental group	
	(PMRT or WBI + RNI)		(no PMRT or WBI alone)	
	Mean	SD	Mean	SD
<b>7-year DFS rate</b>				
Recurrent	18.80%	23.90%	19.40%	22.80%
Disease-free	81.20%	23.90%	80.60%	22.80%
<b>Likelihood of being healthy</b>				
Unhealthy	25.40%	10.00%	25.40%	9.50%
Healthy	74.60%	10.00%	74.60%	9.50%
<b>Clinical lymphedema</b>				
None	84.60%	6.90%	84.90%	6.60%
Lymphedema	15.40%	6.90%	15.10%	6.60%
<b>Dermatitis</b>				
None or grade 1	80.70%	14.20%	80.70%	14.20%
Grade $\geq$ 2	19.30%	14.20%	19.30%	14.20%
<b><i>In situ</i>/invasive cancer</b>				
None	93.30%	5.40%	93.40%	5.20%
Contralateral event	6.70%	5.40%	6.60%	5.20%
<b>Major cardiac events</b>				
None	92.40%	7.20%	92.60%	6.80%
Major cardiac event	7.60%	7.20%	7.40%	6.80%
<b>Reconstruction failure</b>				
None	99.00%	0.60%	99.40%	0.40%
Major failure event	1.00%	0.60%	0.60%	0.40%
<b>Rib fracture</b>				
None	90.60%	11.70%	90.60%	11.70%
Clinical/radiological fracture	9.40%	11.70%	9.40%	11.70%
<b>Symptomatic pneumonitis</b>				
None	90.40%	8.70%	90.40%	8.70%
Symptomatic pneumonitis	9.60%	8.70%	9.60%	8.70%

**Supplementary Table S1.** Sensitivity analysis for the two arms of the PORT-N1 clinical trial.

Abbreviations: DFS, disease-free survival; PMRT, post-mastectomy radiotherapy; RNI, regional nodal irradiation; SD, standard deviation; WBI, whole-breast irradiation.



**Supplementary Figure S1. Density Plots for the Probabilities between Two Arms of the PORT-N1 Clinical Trial.** For the control group of the PORT-N1 trial, probability density of **(A)** 7-Year Disease Free Survival (DFS) and **(B)** likelihood of being healthy are plotted. For the experimental group, those of **(C)** 7-Y DFS and **(D)** likelihood of being healthy are plotted.