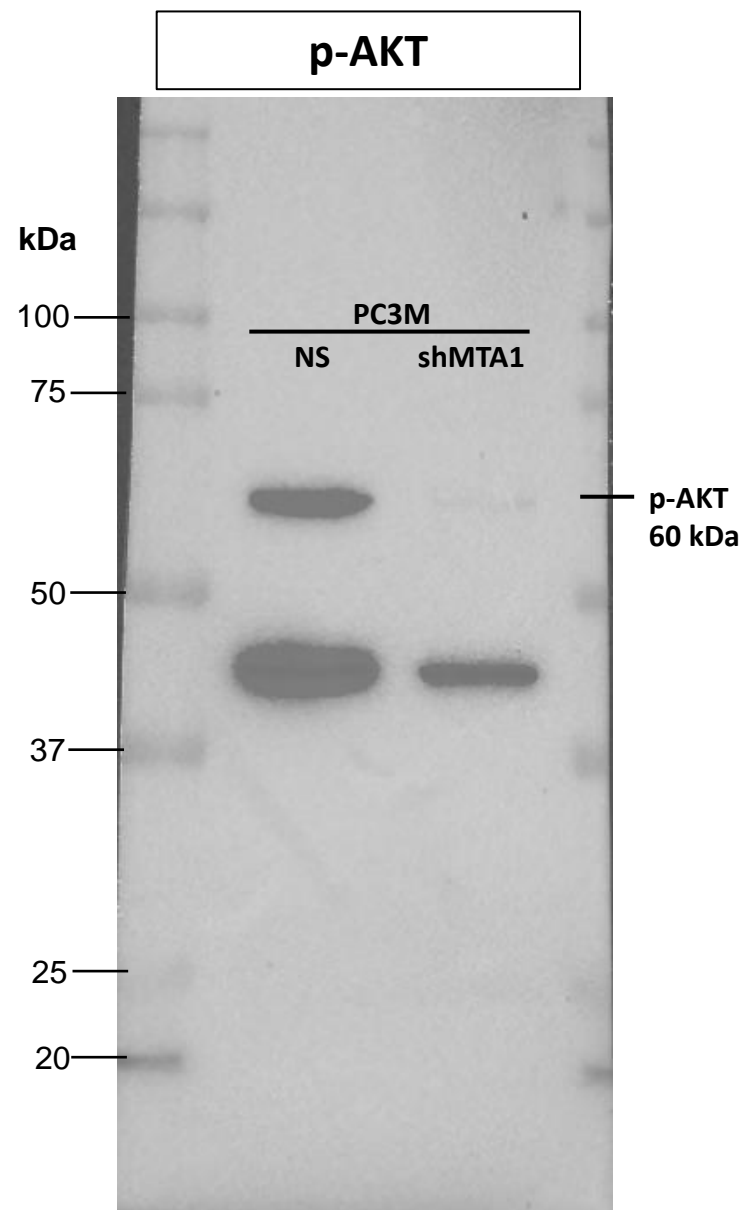


Supplementary Information: Original gels

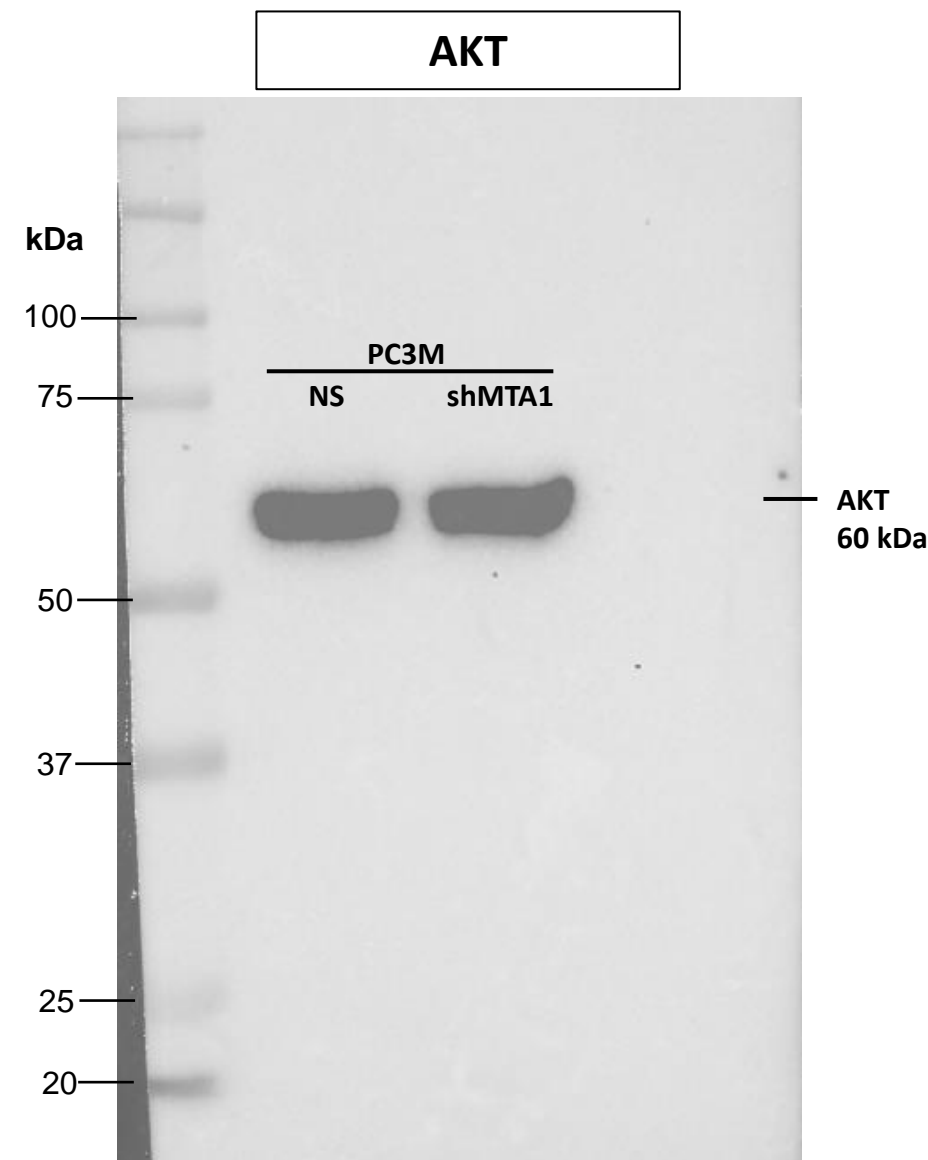
“The Therapeutic Efficacy and Mechanism of Action of Gnetin C, a Natural Compound from the Melinjo Plant, in a Preclinical Mouse Model of Advanced Prostate Cancer”

Gisella Campanelli, Ekniel Francois, Prashanth Parupathi, Lakshmi Sirisha Devarakonda, Ching Yang , Avinash Kumar and Anait S. Levenson

PC3M cells – whole blot images (figure 3a)

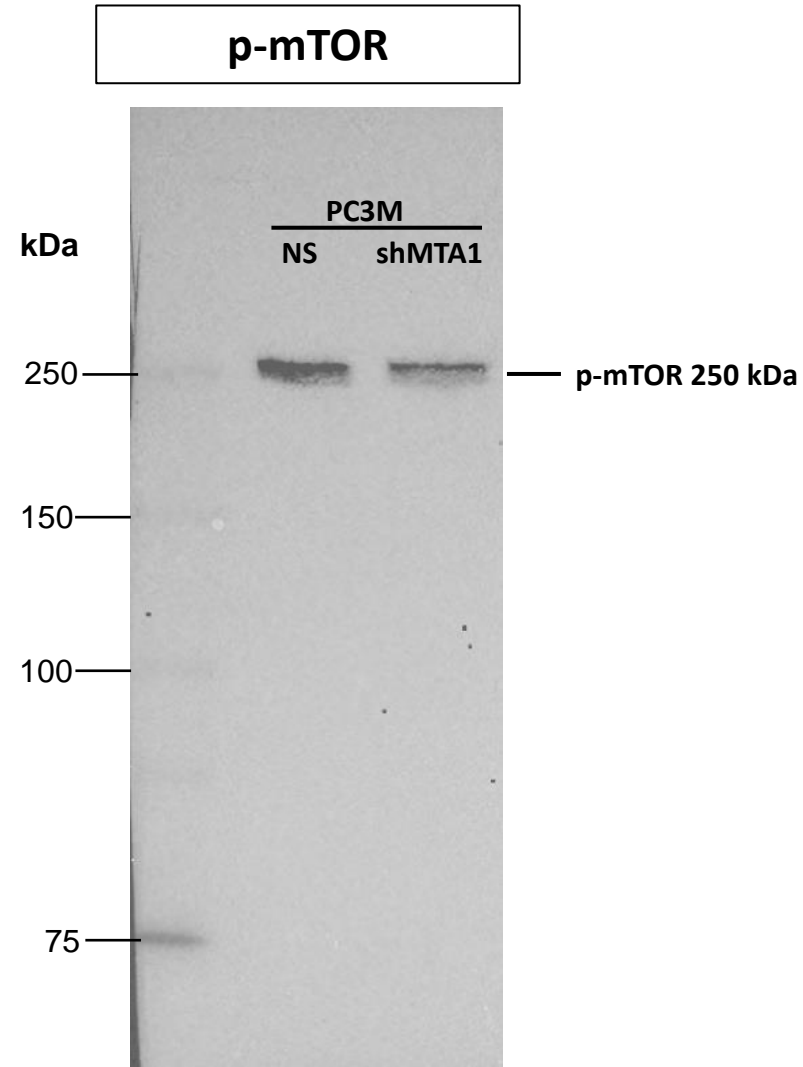


10% polyacrylamide gel

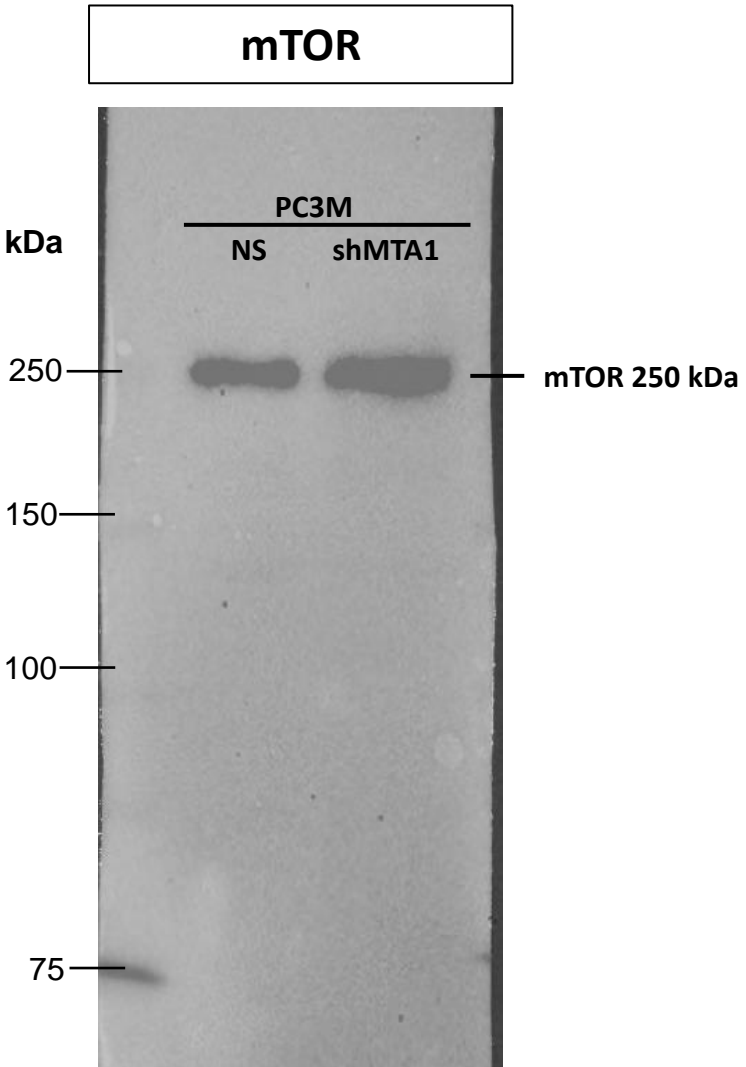


10% polyacrylamide gel

PC3M cells – whole blot images (figure 3a)

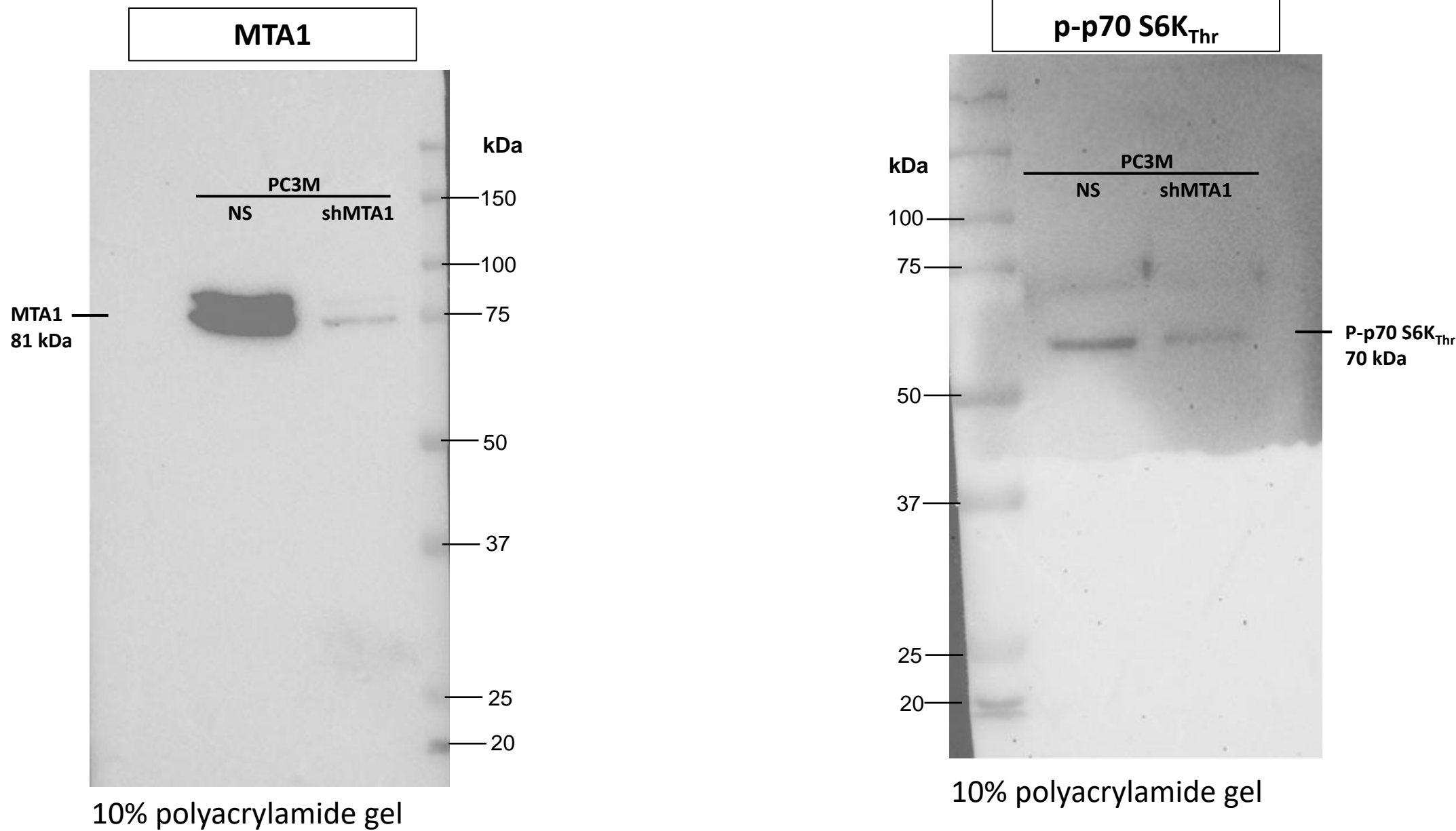


6% polyacrylamide gel

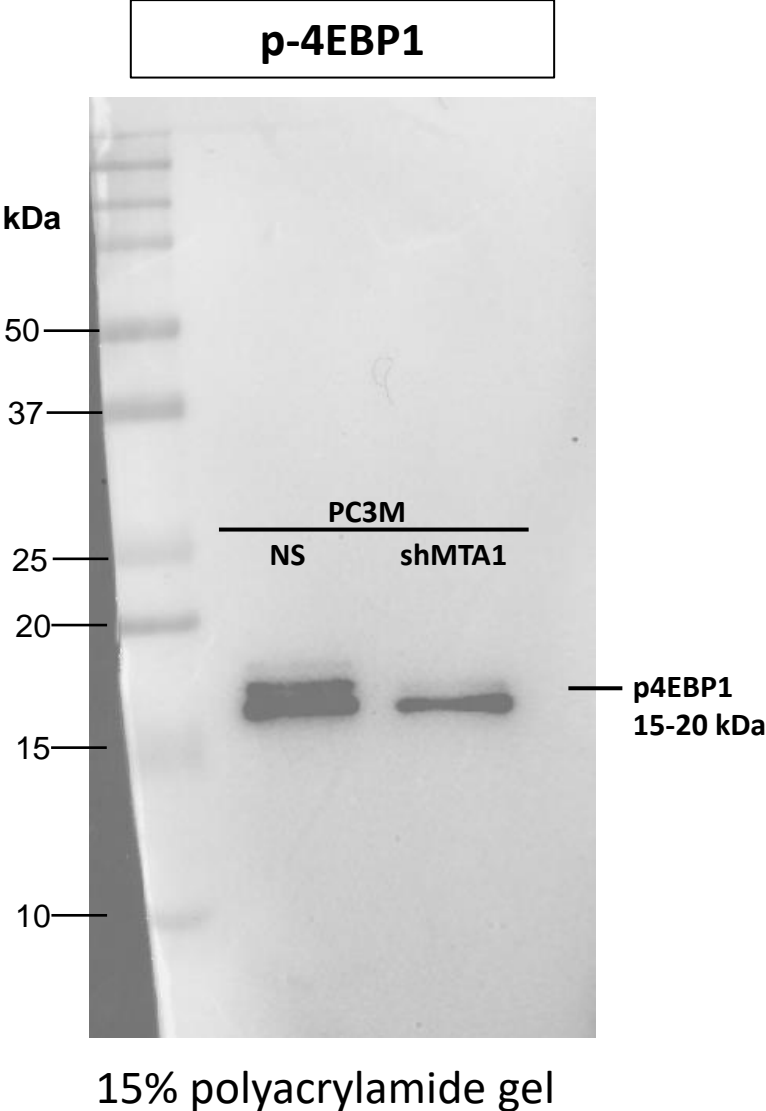
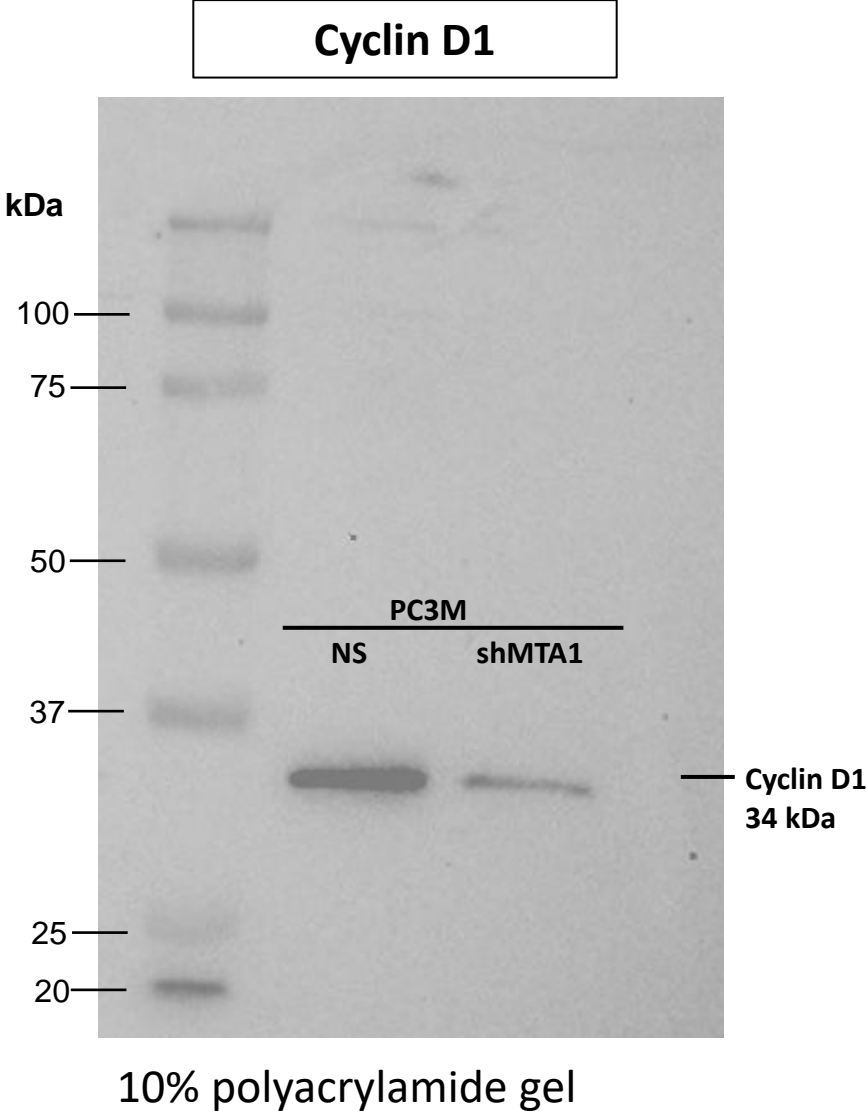


6% polyacrylamide gel

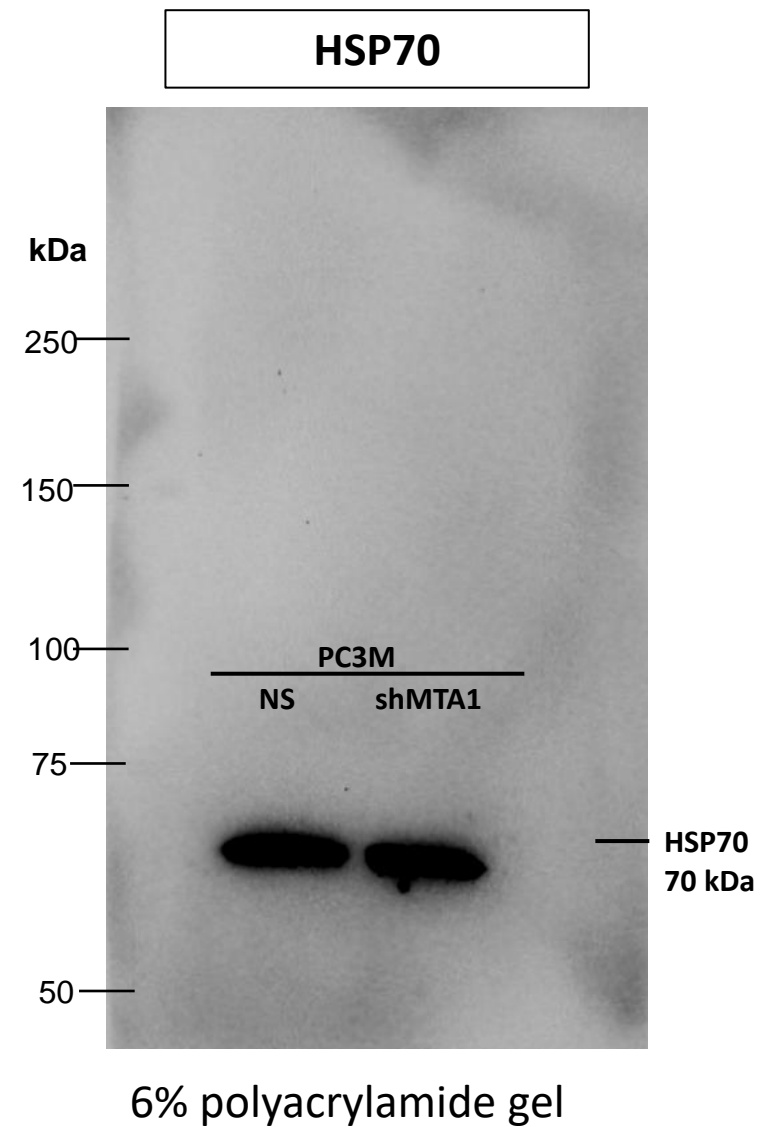
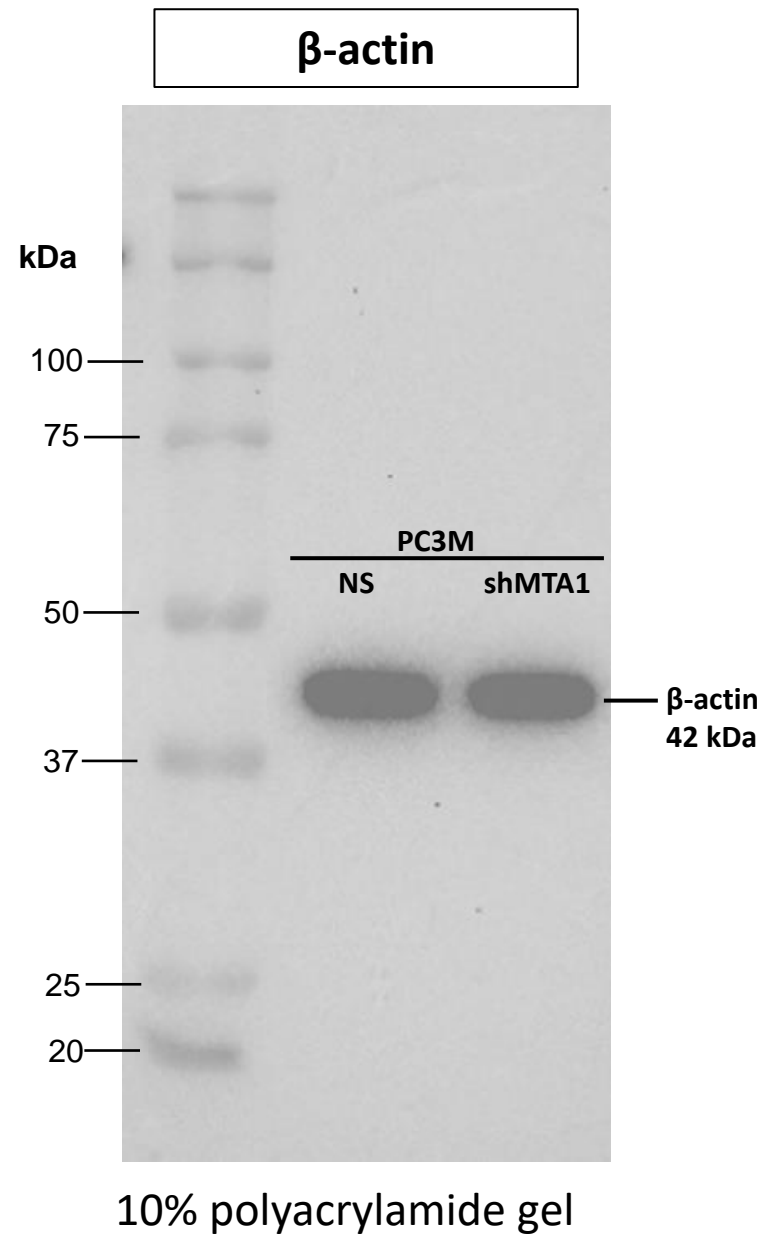
PC3M cells – whole blot images (figure 3a)



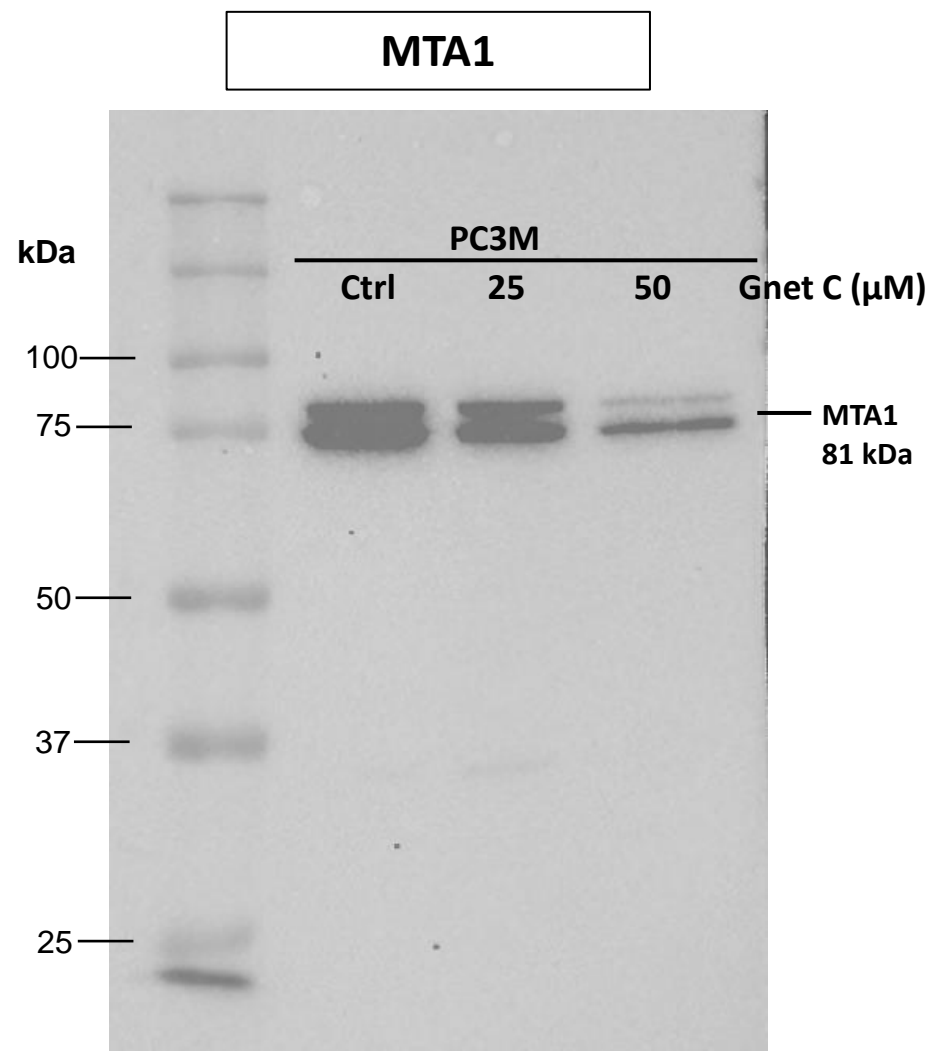
PC3M cells – whole blot images (figure 3a)



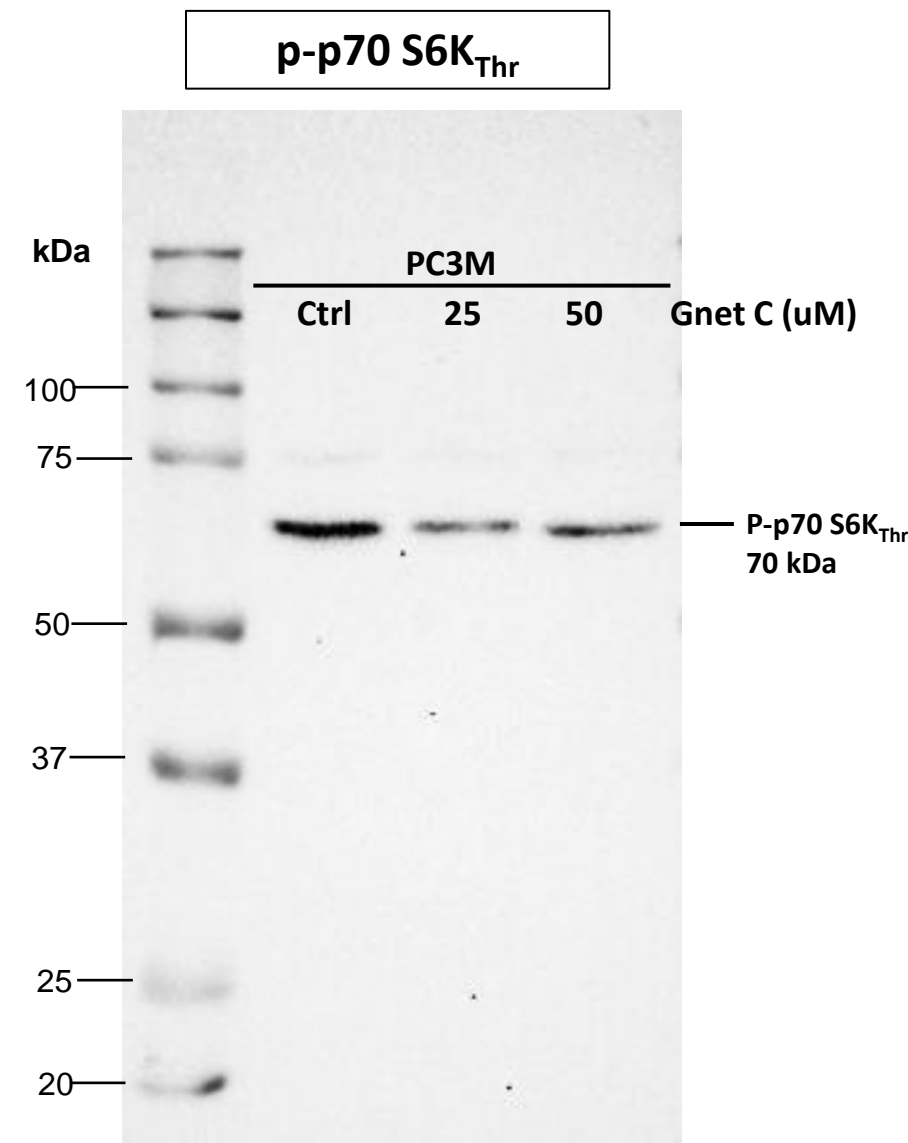
PC3M cells – whole blot images (figure 3a)



PC3M cells treated with Gnet C – whole blot images (figure 3b)

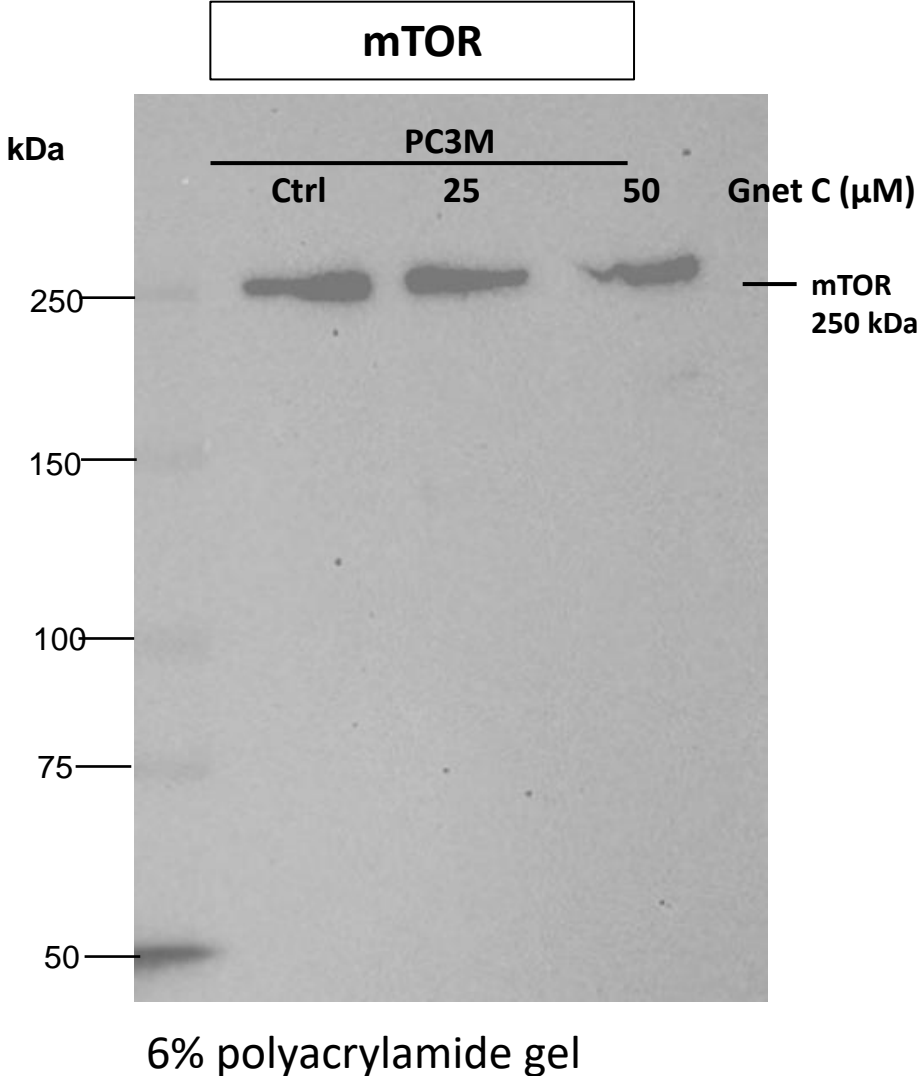
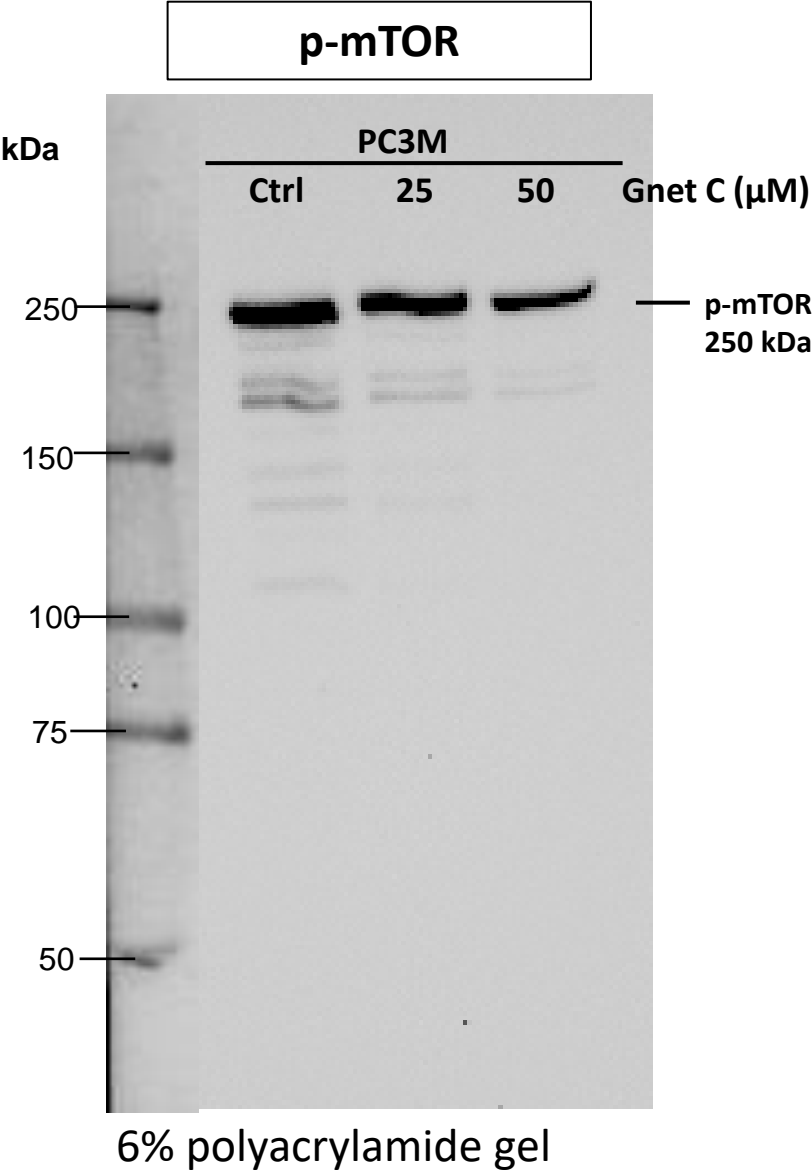


10% polyacrylamide gel

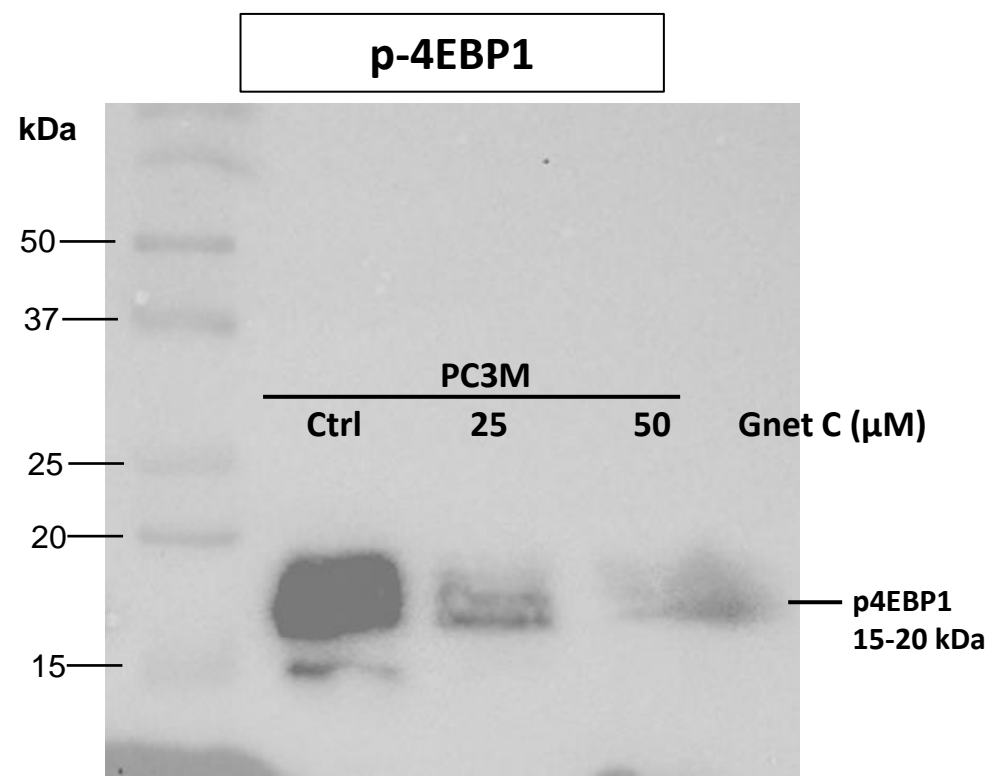


10% polyacrylamide gel

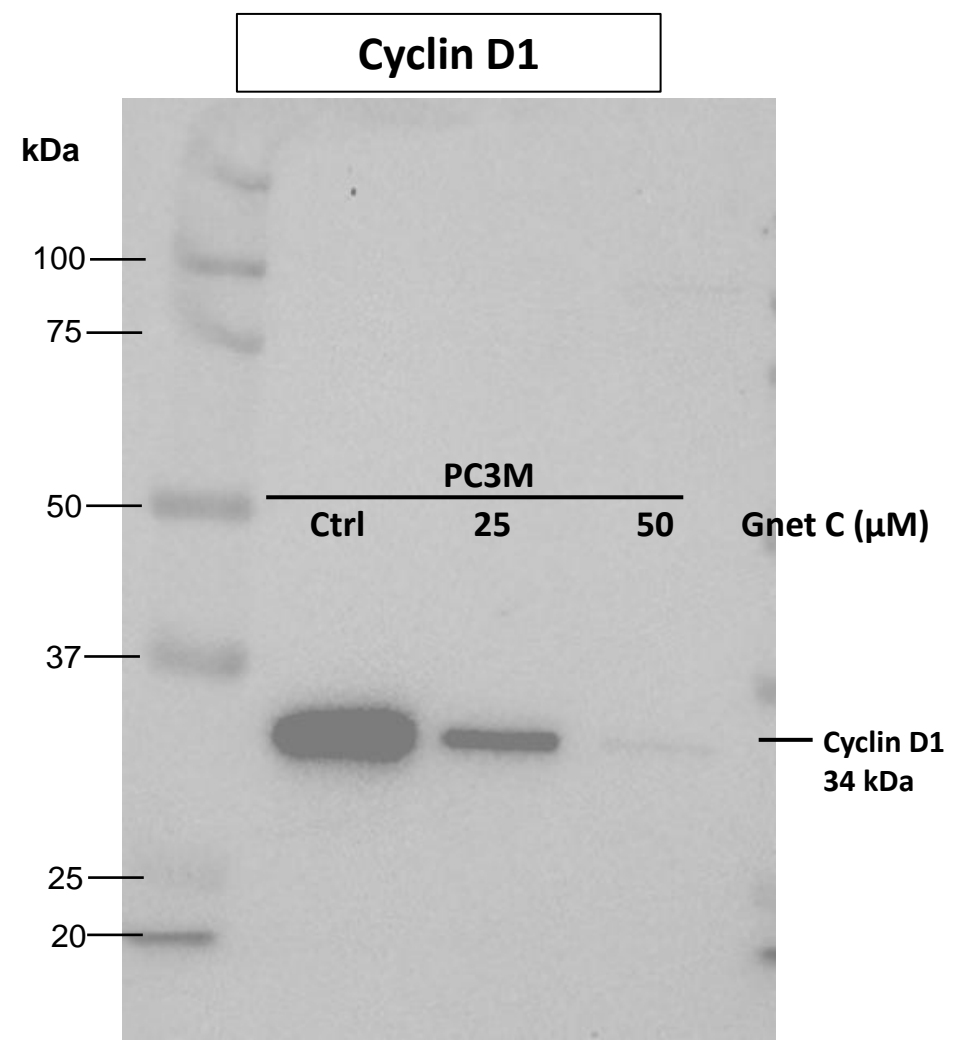
PC3M cells treated with Gnet C – whole blot images (figure 3b)



PC3M cells treated with Gnet C – whole blot images (figure 3b)

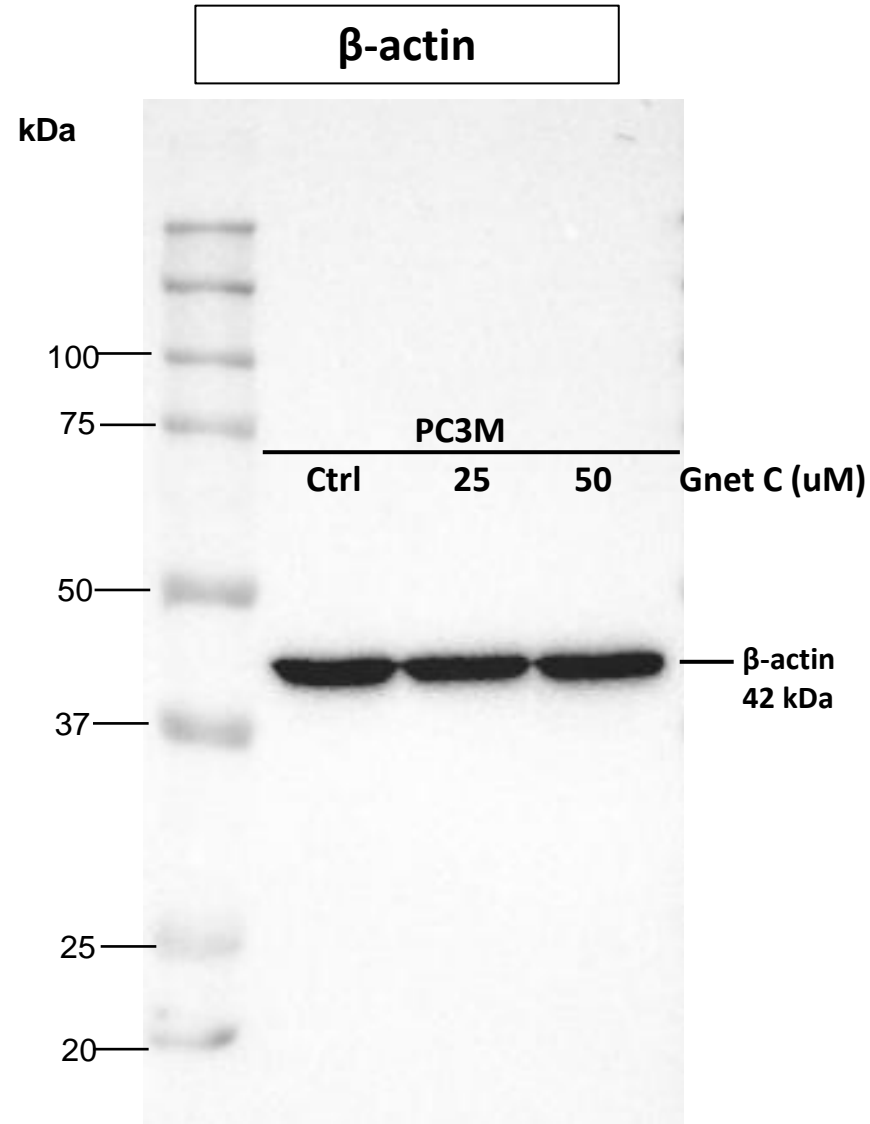


15% polyacrylamide gel

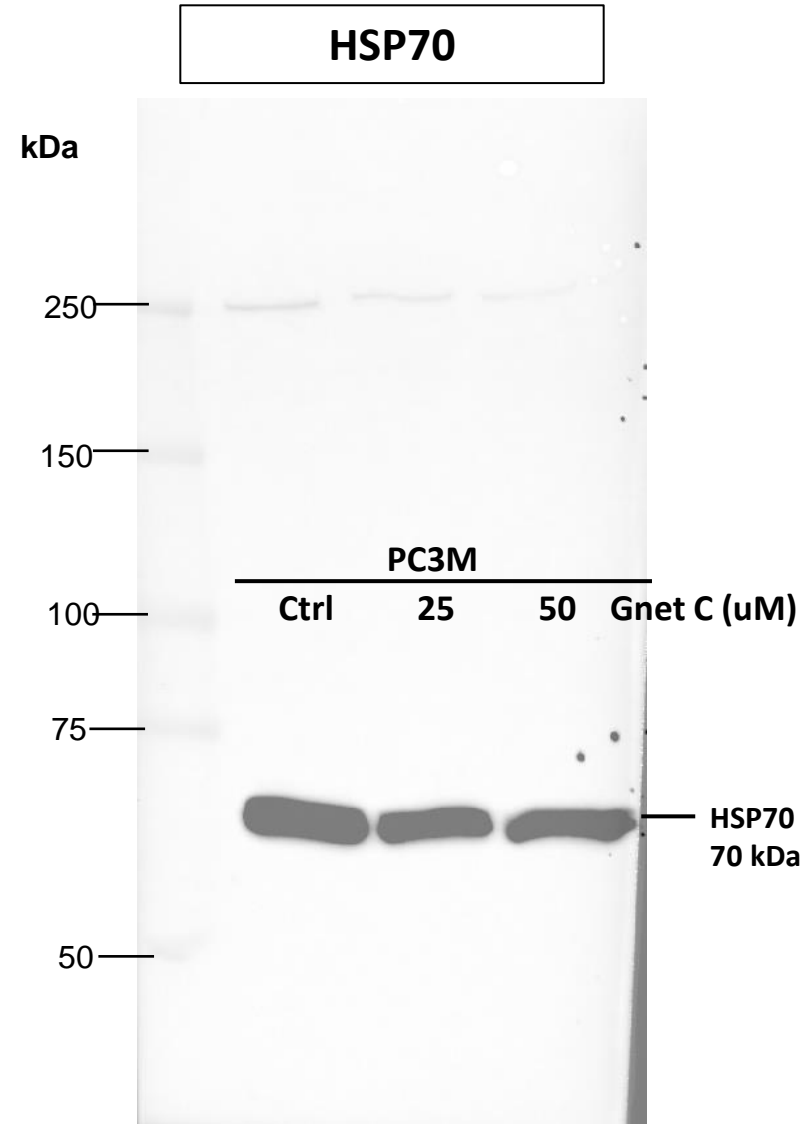


10% polyacrylamide gel

PC3M cells treated with Gnet C – whole blot images (figure 3b)

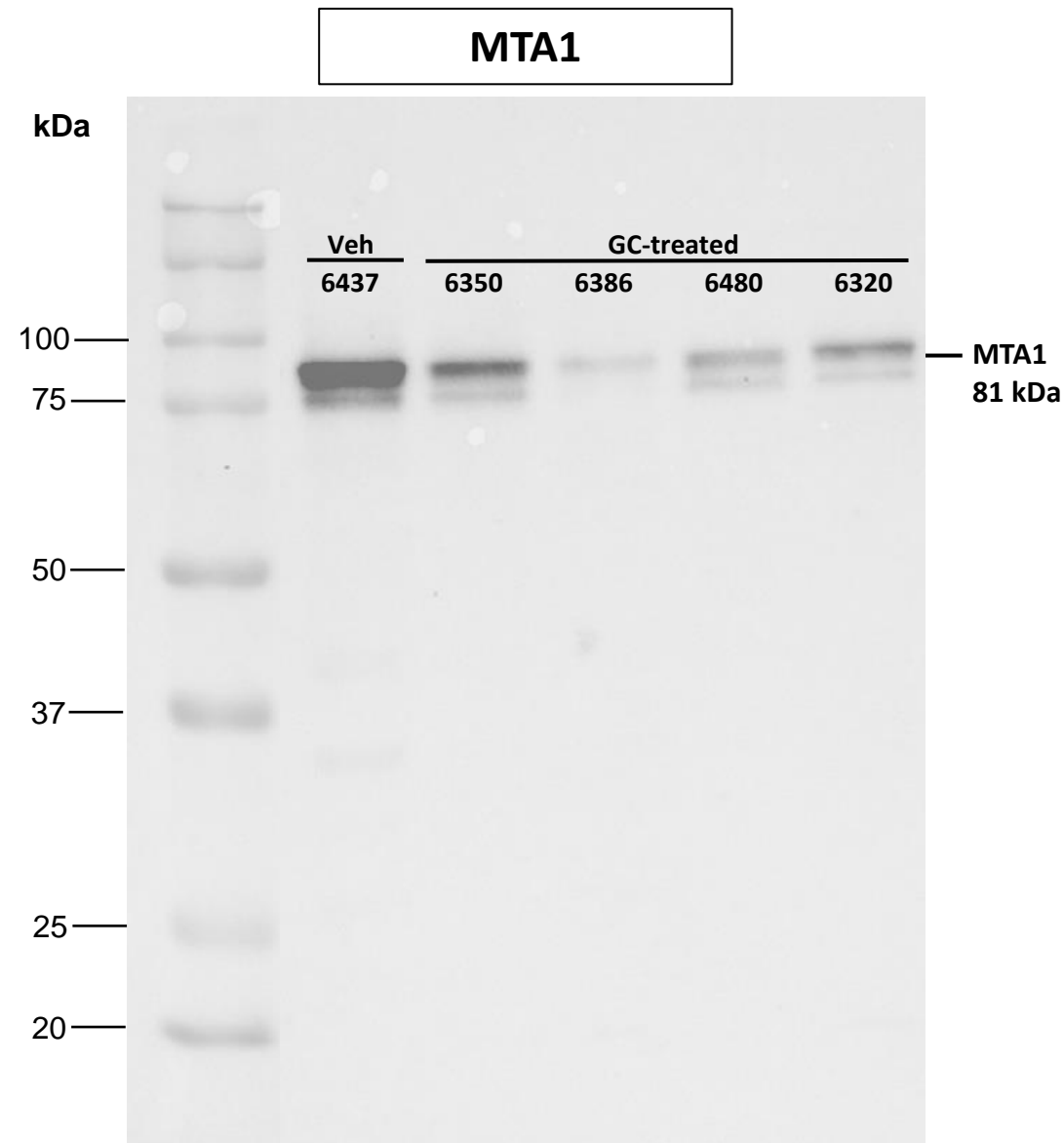


10% polyacrylamide gel

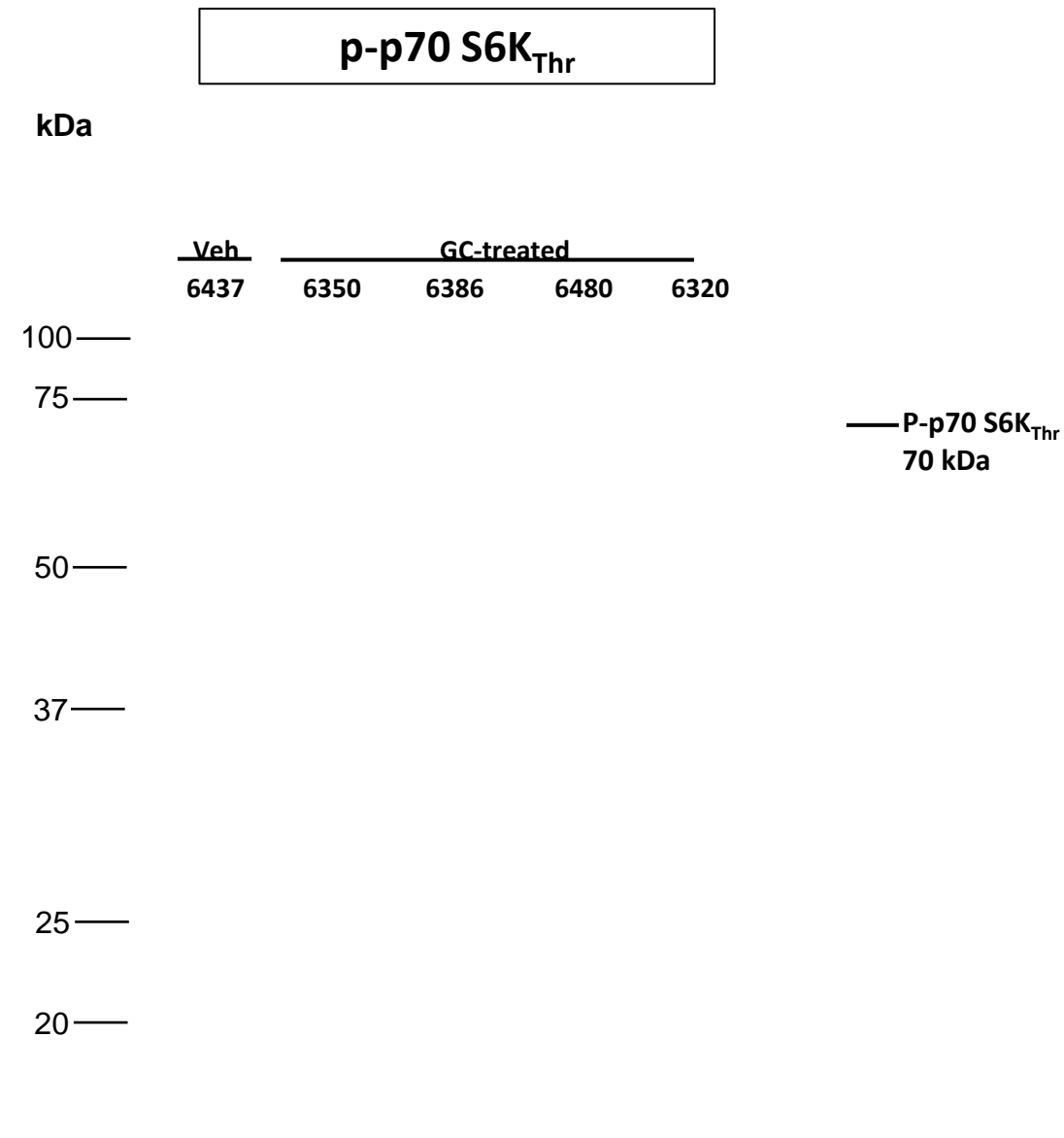


6% polyacrylamide gel

Prostate tissues – whole blot images (figure 6)

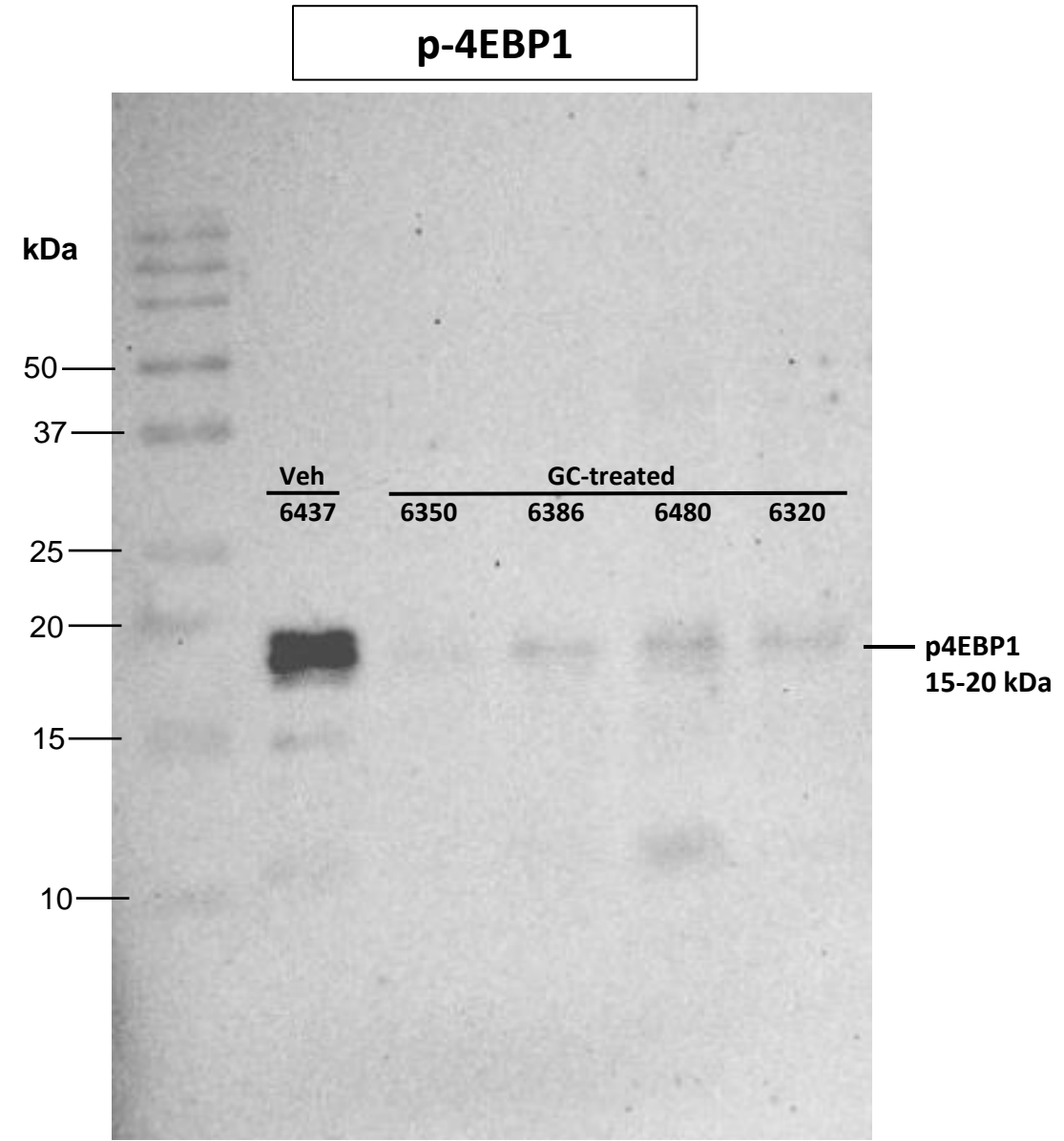


10% polyacrylamide gel

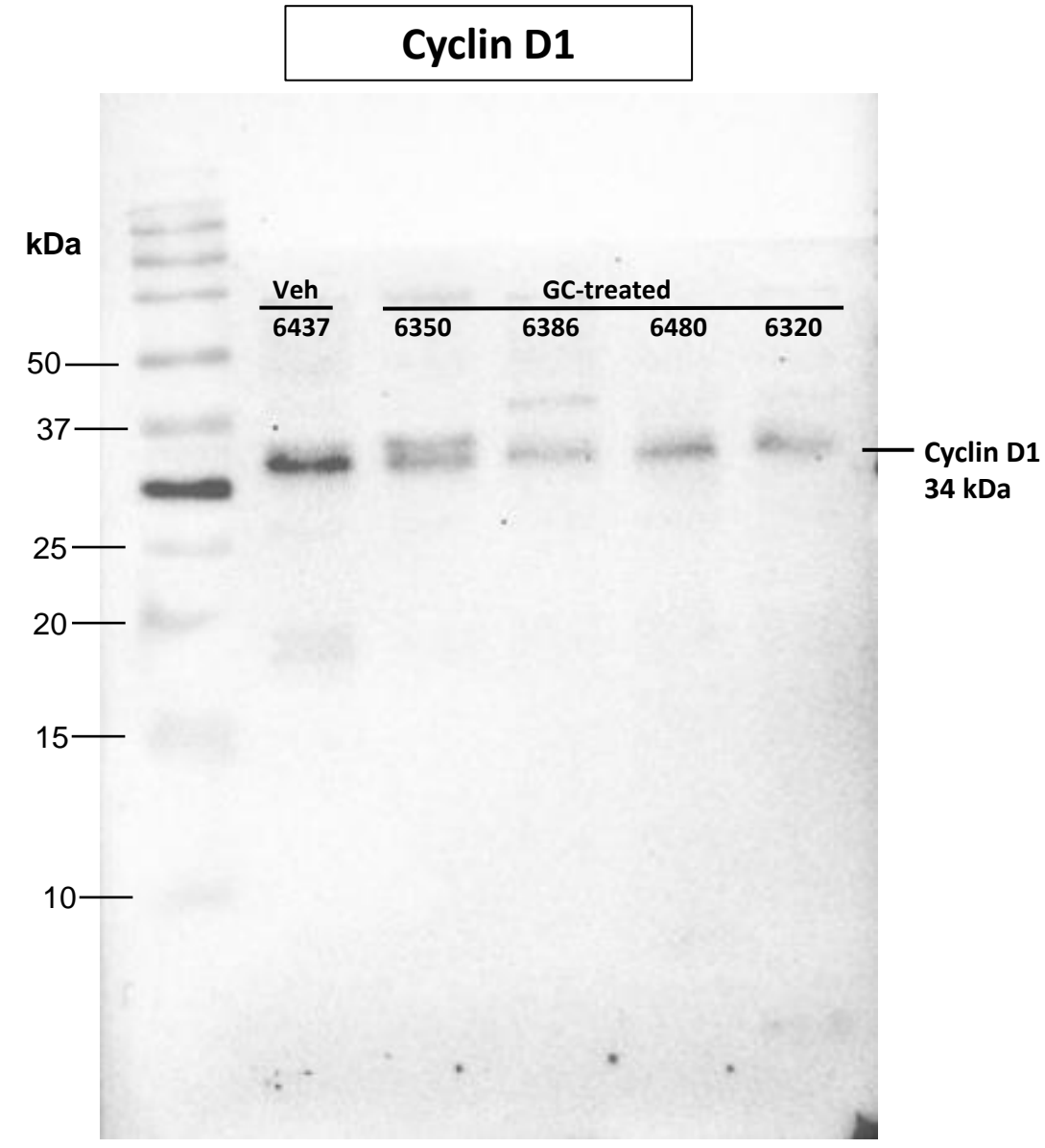


10% polyacrylamide gel

Prostate tissues – whole blot images (figure 6)

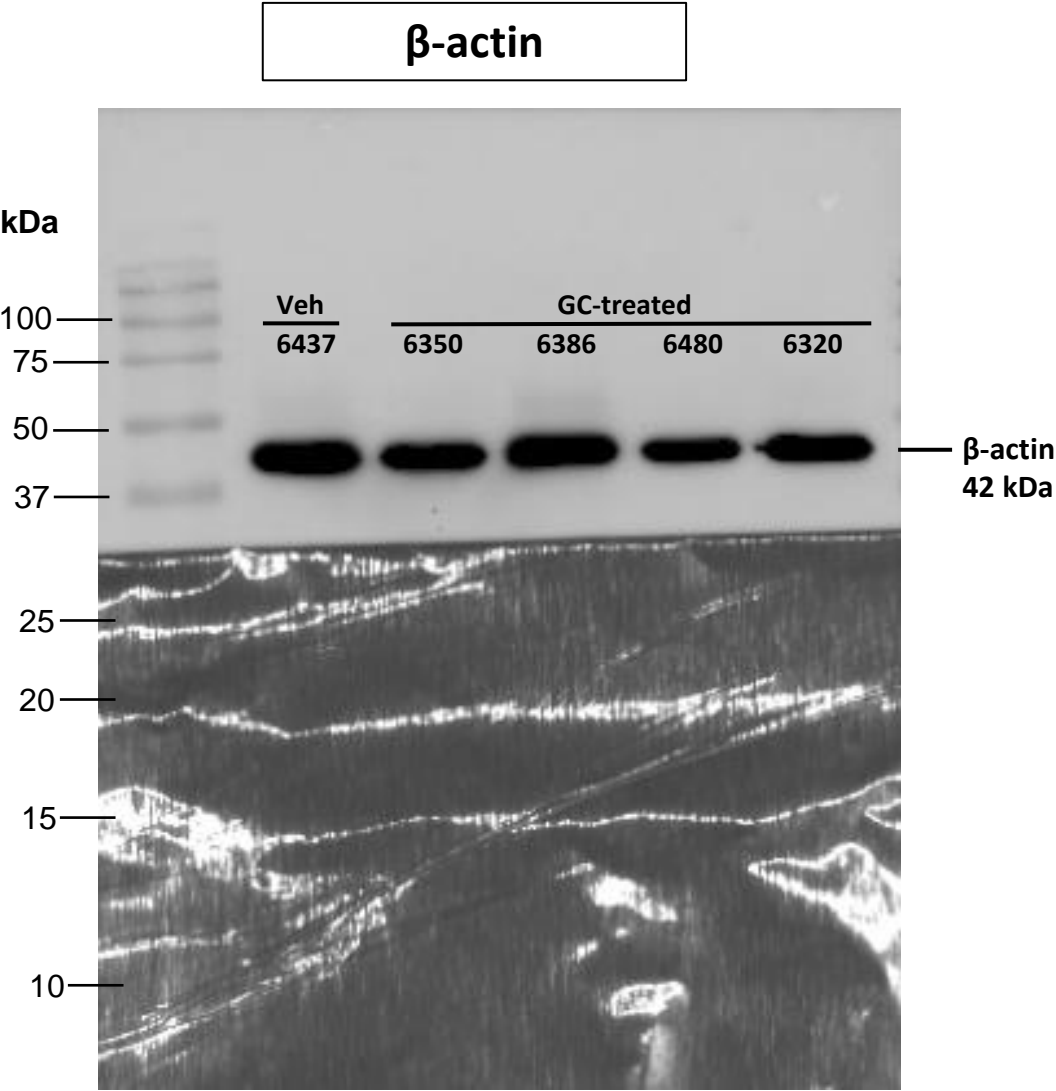


15% polyacrylamide gel



15% polyacrylamide gel

Prostate tissues – whole blot images (figure 6)



15% polyacrylamide gel