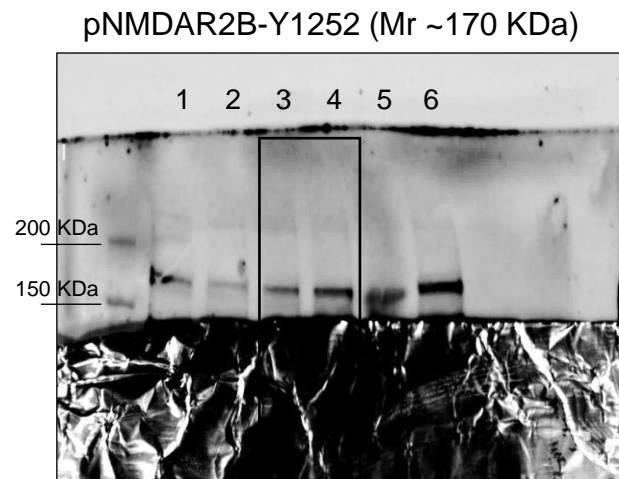
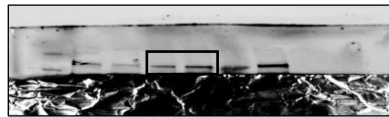


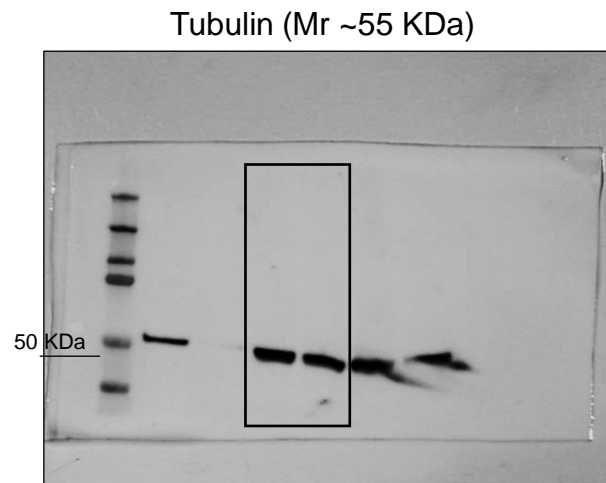
Figure 5B, Glu-CB₁R (WT and KO)



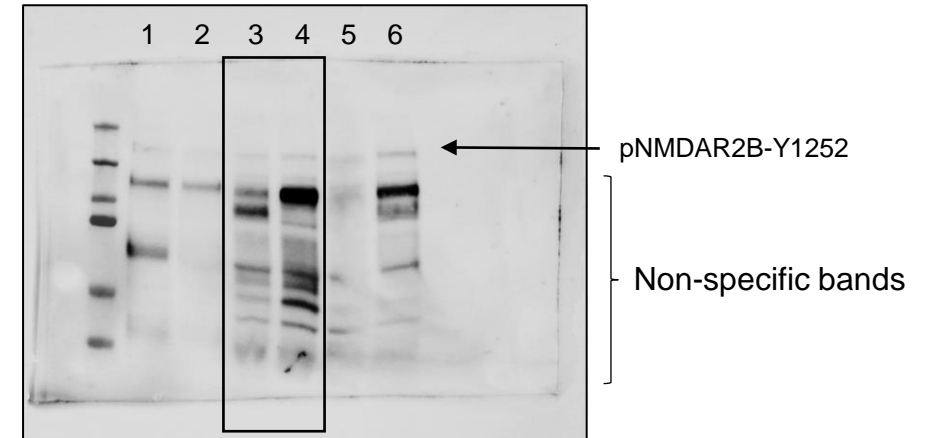
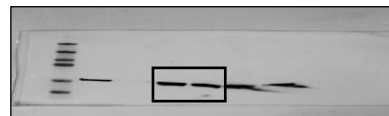
Resizing



An aluminium foil was placed to allow a longer exposure of the specific band (see right)



Resizing

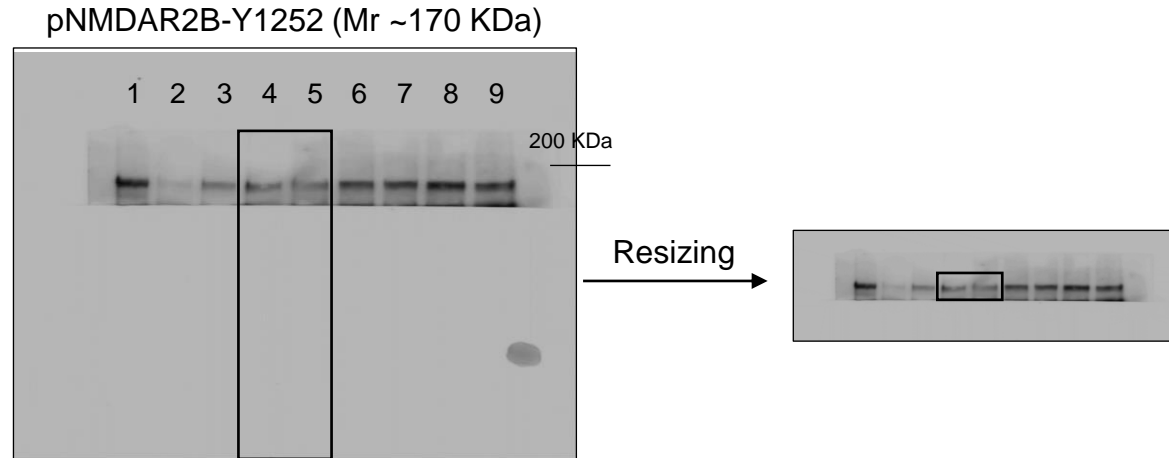


Shorter exposure without aluminium foil

Key to blot lanes

1. Unrelated sample
2. Unrelated sample
3. Glu-CB₁R WT tumour
4. Glu-CB₁R KO tumour
5. Glu-CB₁R WT tumour
6. Glu-CB₁R KO tumour

Figure 5B, GABA- CB_1R (WT and KO)



The membrane was cut to allow the simultaneous detection of tubulin

Key to blot lanes

1. Unrelated sample
2. Unrelated sample
3. Unrelated sample
4. GABA- CB_1R WT tumour
5. GABA- CB_1R KO tumour
6. GABA- CB_1R WT tumour
7. GABA- CB_1R KO tumour
8. GABA- CB_1R WT tumour
9. GABA- CB_1R KO tumour

