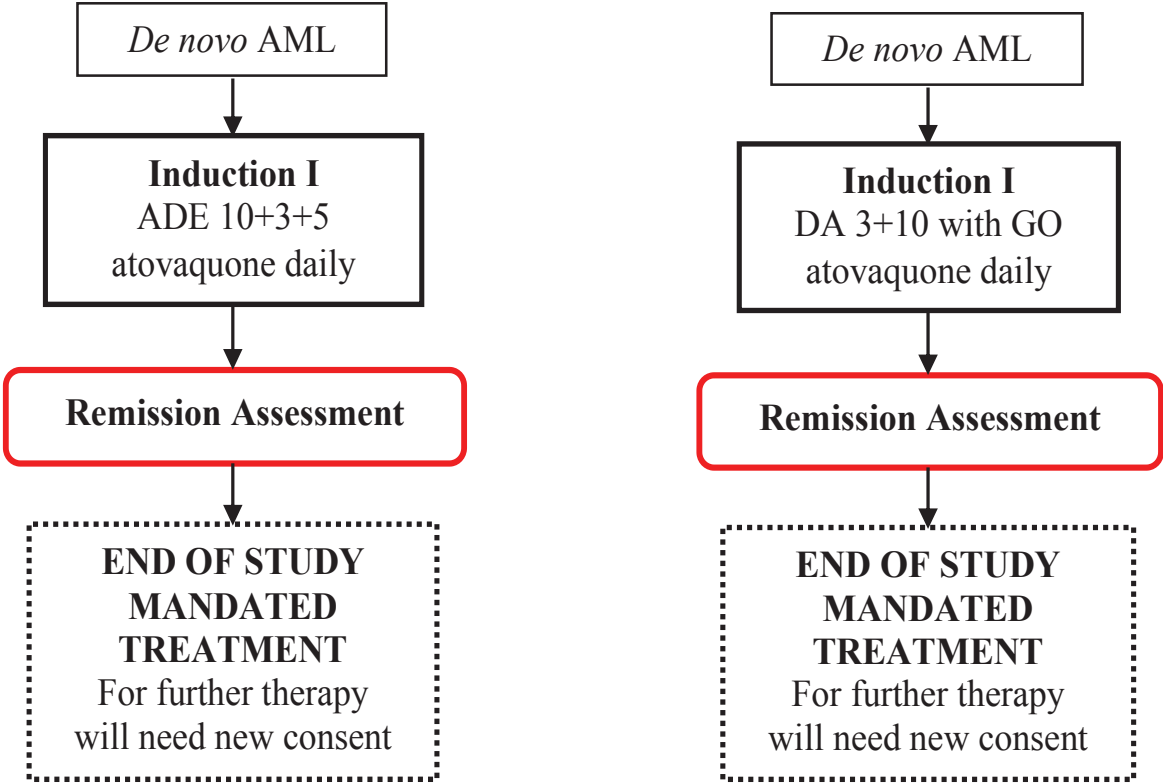


Supplementary Figure S1



A

Page

--	--	--

****Ease of Administration Question:** Based on its taste, smell, and how it felt in the mouth, how easy or difficult was it for you/your child to take this medication today: (Very easy=5, Easy=4, Neither easy or difficult=3, Difficult=2, Very difficult=1).

B

Version Number: 1.04

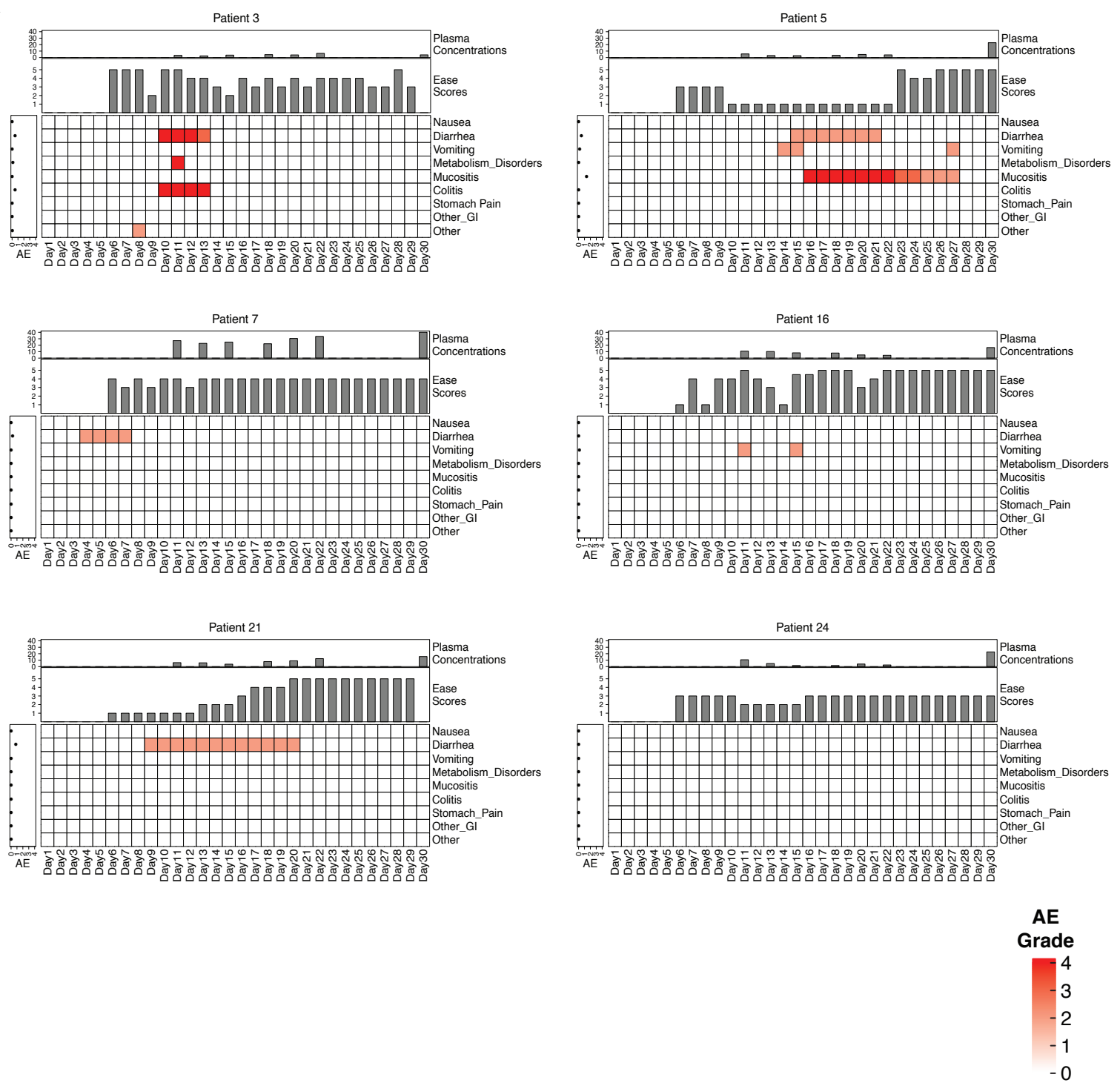
Page 1

114

was it for you/your child to take this medication today: (Very easy=5, Easy=4, Neither easy or difficult=3, Difficult=2, Very difficult=1).

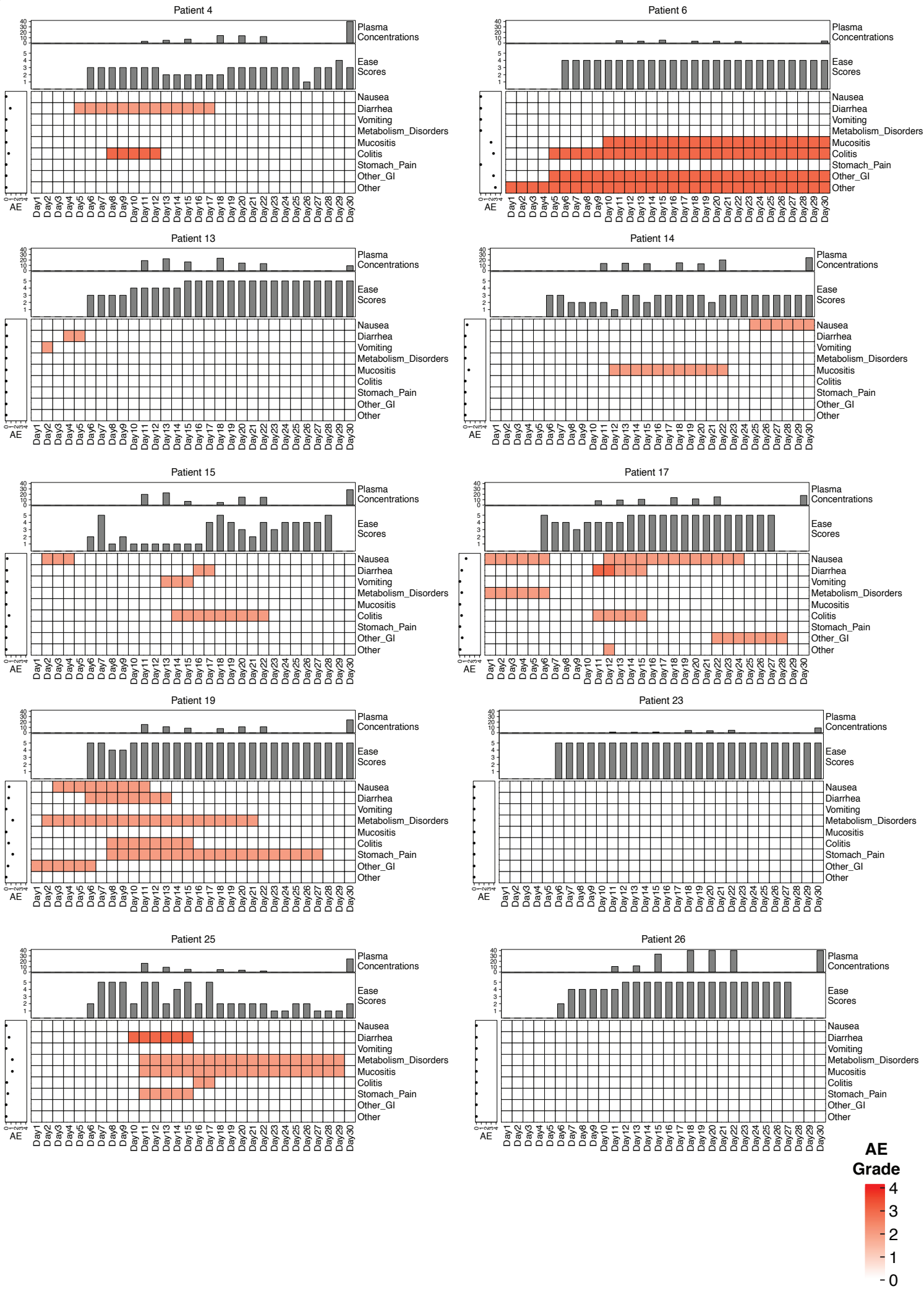
Supplementary Figure S3

A



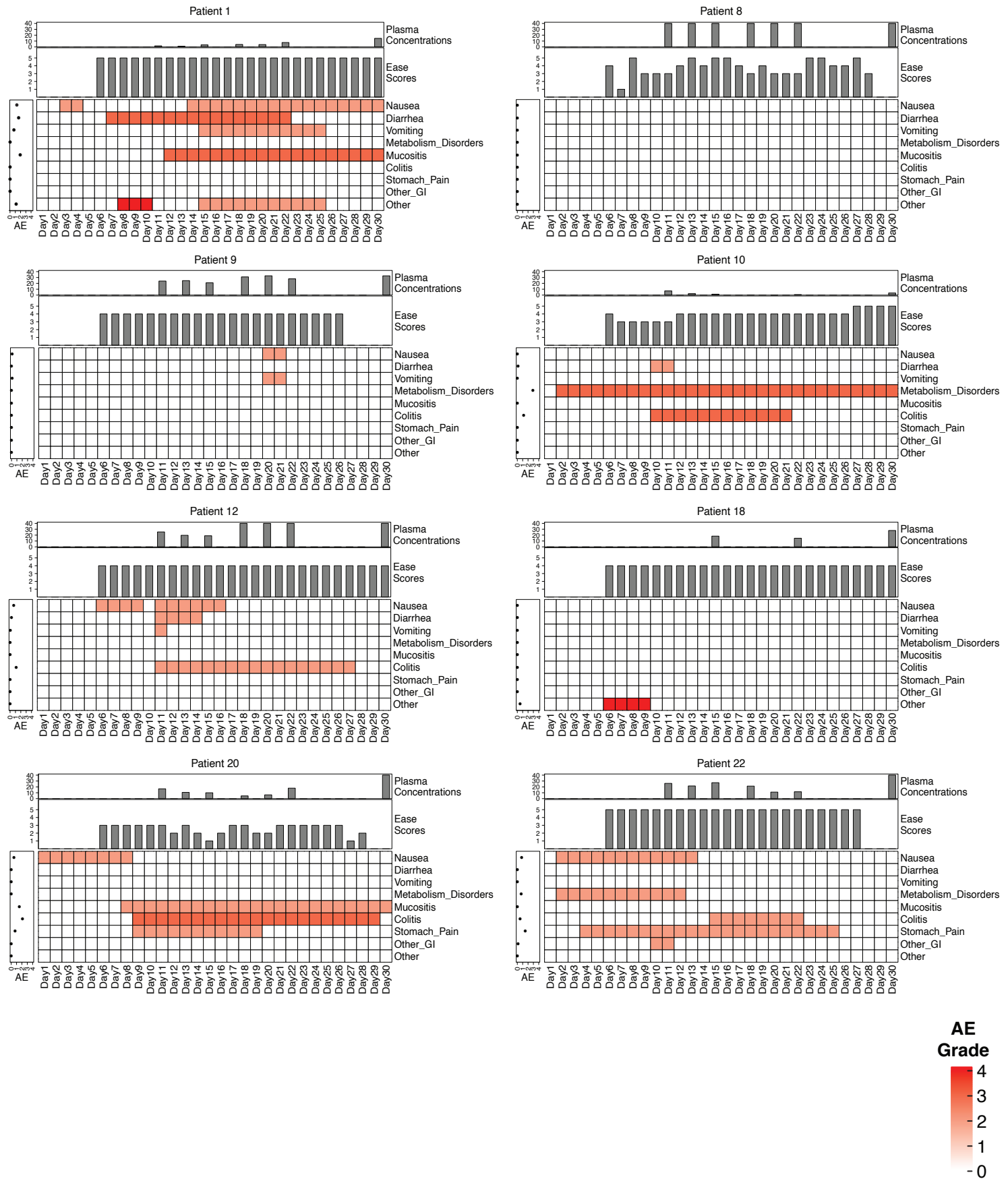
Supplementary Figure S3

B

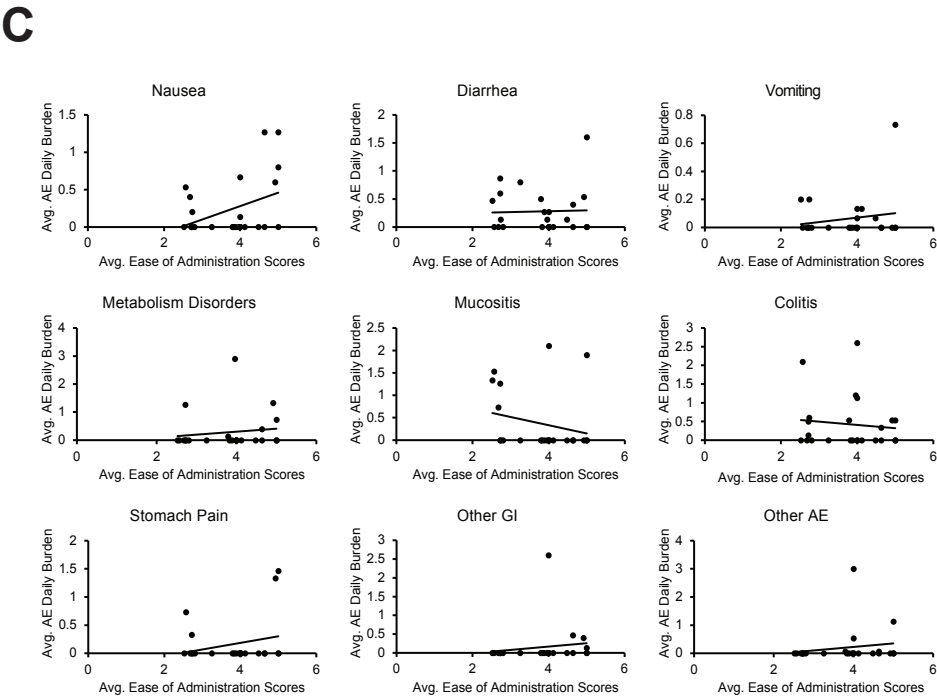
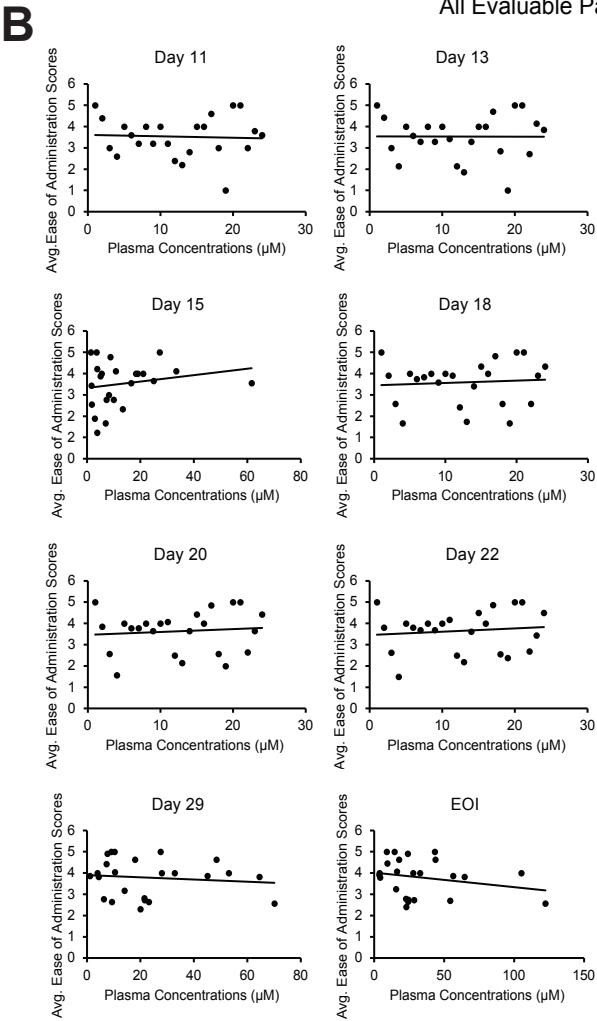
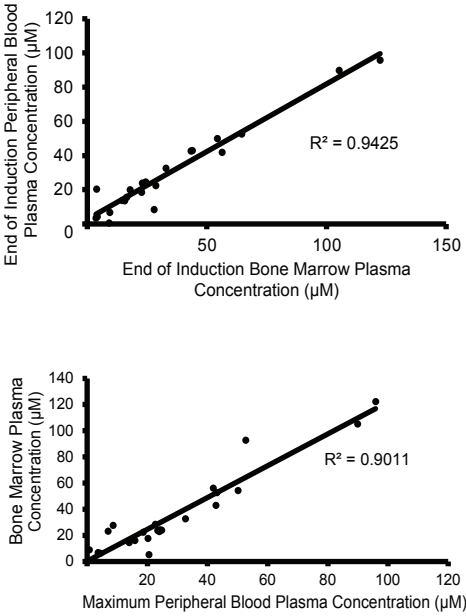
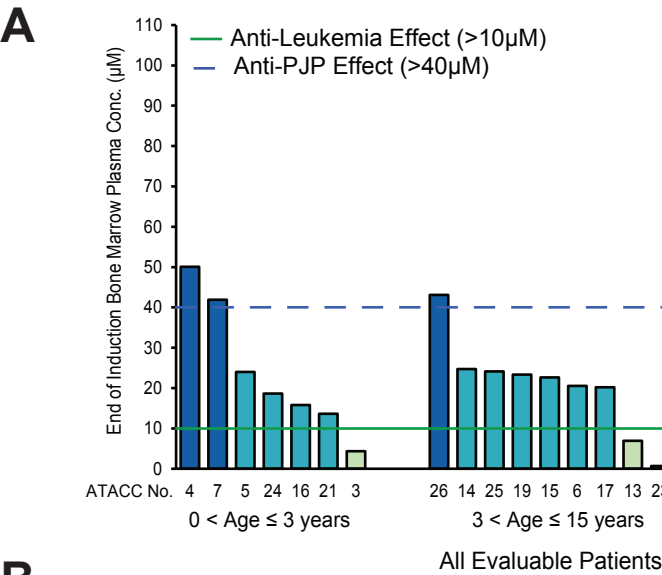


Supplementary Figure S3

C



Supplementary Figure S4



D

Average Ease of Administration Scores vs Average AE Burden

	Nausea	Diarrhea	Vomiting	Metabolic Disorders	Mucositis	Colitis	Stomach Pain	Other GI	Other
Pearson Coefficient (r)	0.383	0.033	0.174	0.134	-0.228	-0.108	0.242	0.143	0.166
P-value	0.064	0.877	0.417	0.533	0.285	0.616	0.254	0.505	0.439

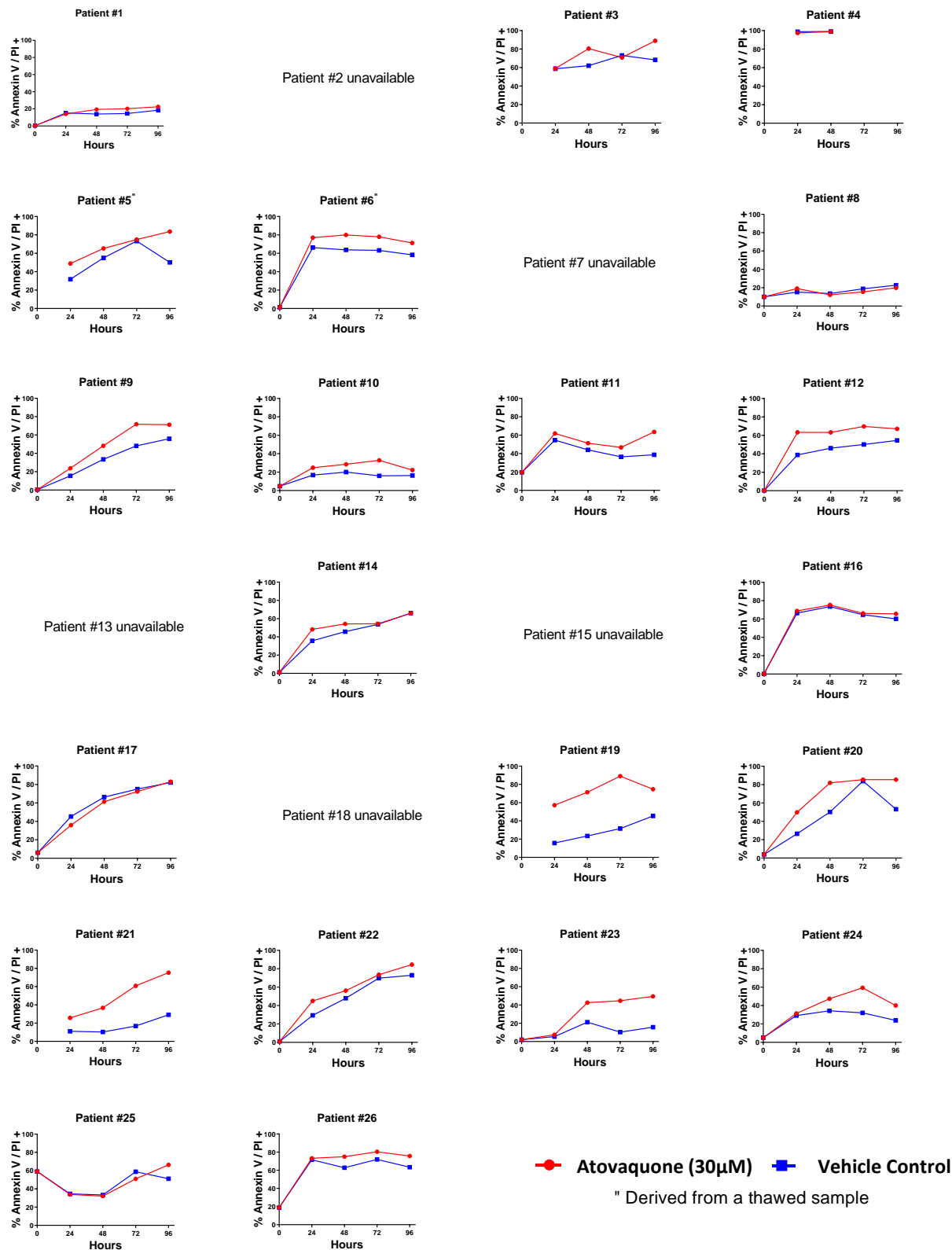
Average Ease of Administration Scores vs Plasma Concentrations

	Day 11	Day 13	Day 15	Day 18	Day 20	Day 22	Day 29	EOI
Pearson Coefficient (r)	-0.035	-0.055	0.194	0.230	0.085	0.155	-0.117	-0.238
P-value	0.875	0.804	0.363	0.291	0.705	0.480	0.587	0.263

Supplementary Figure SF5

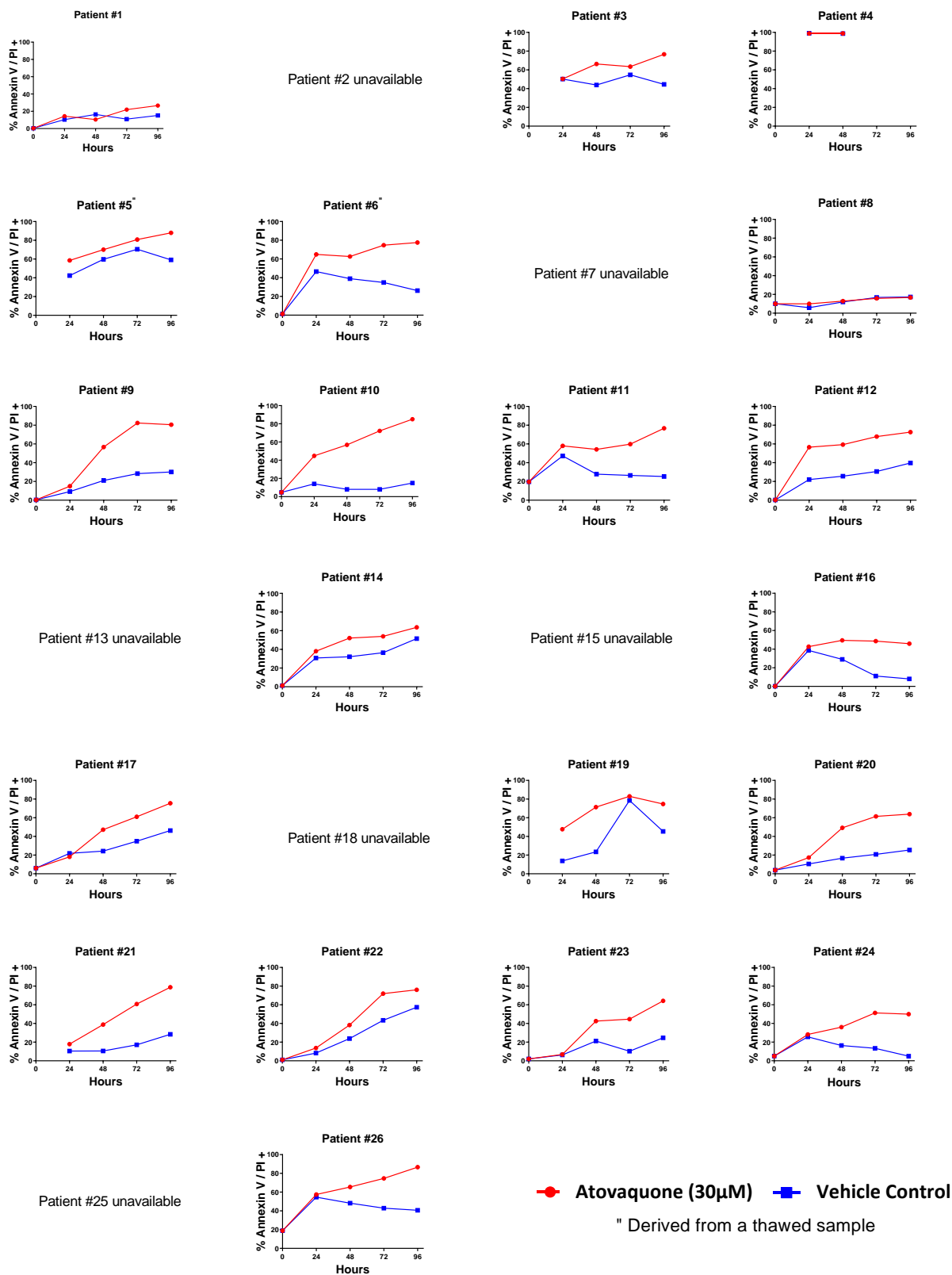
A

All Patient Samples in Media+FBS



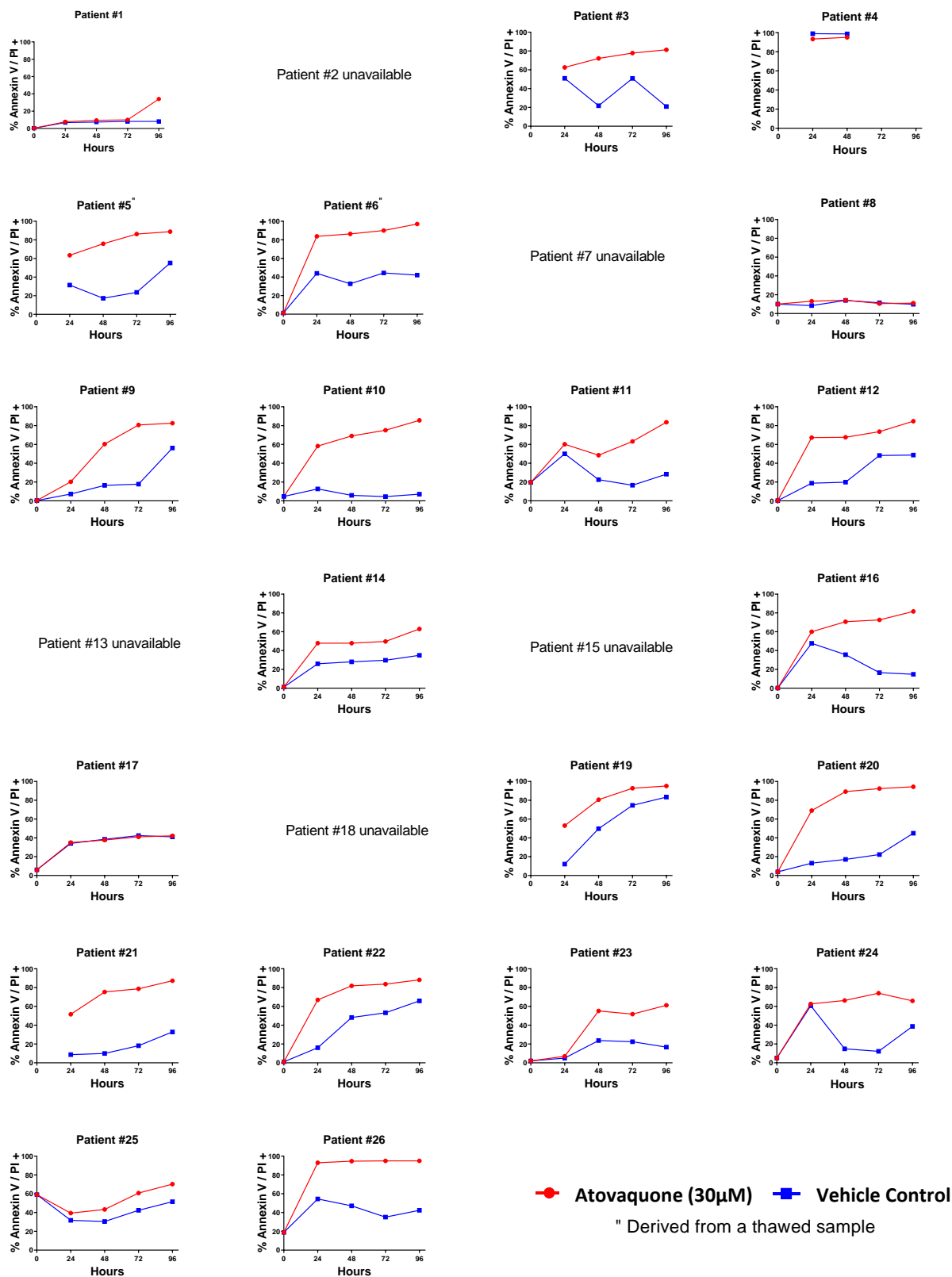
Supplementary Figure SF5

B All Patient Samples in CM



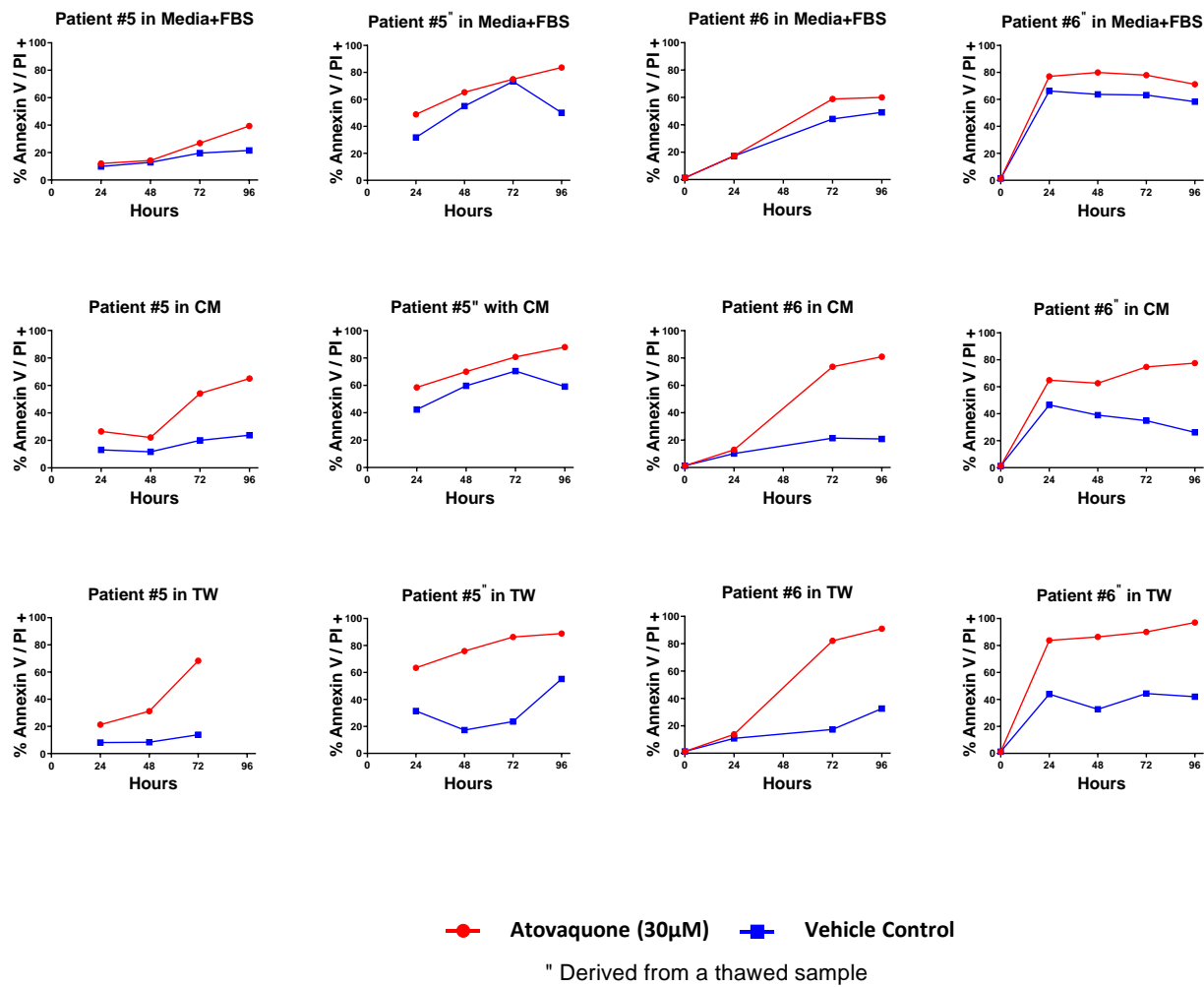
Supplementary Figure SF5

C All Patient Samples in TW

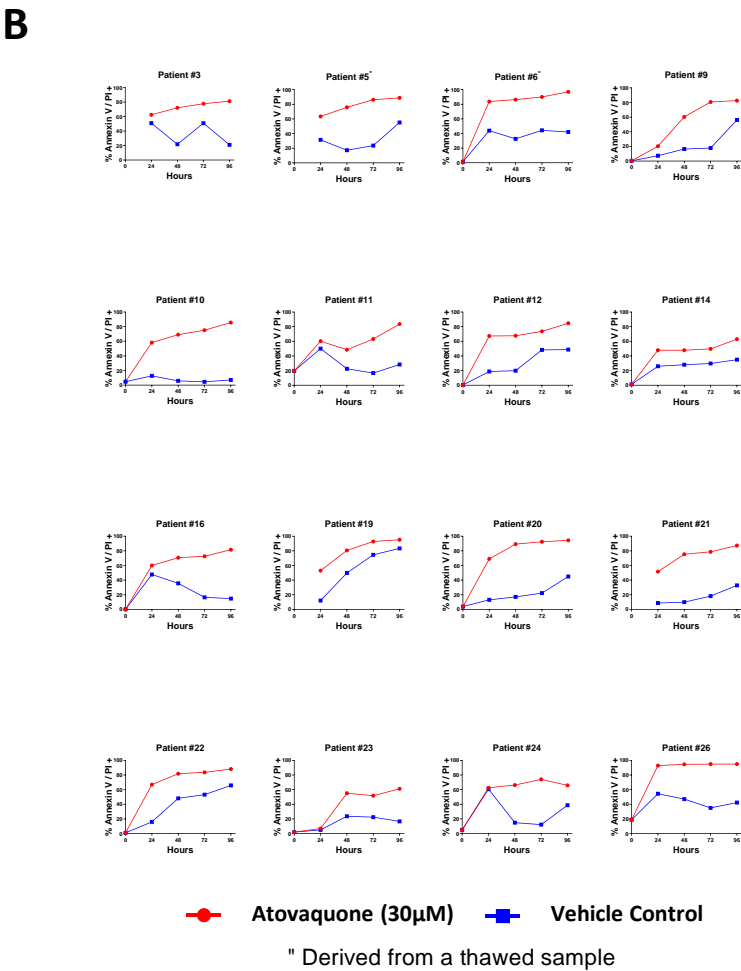
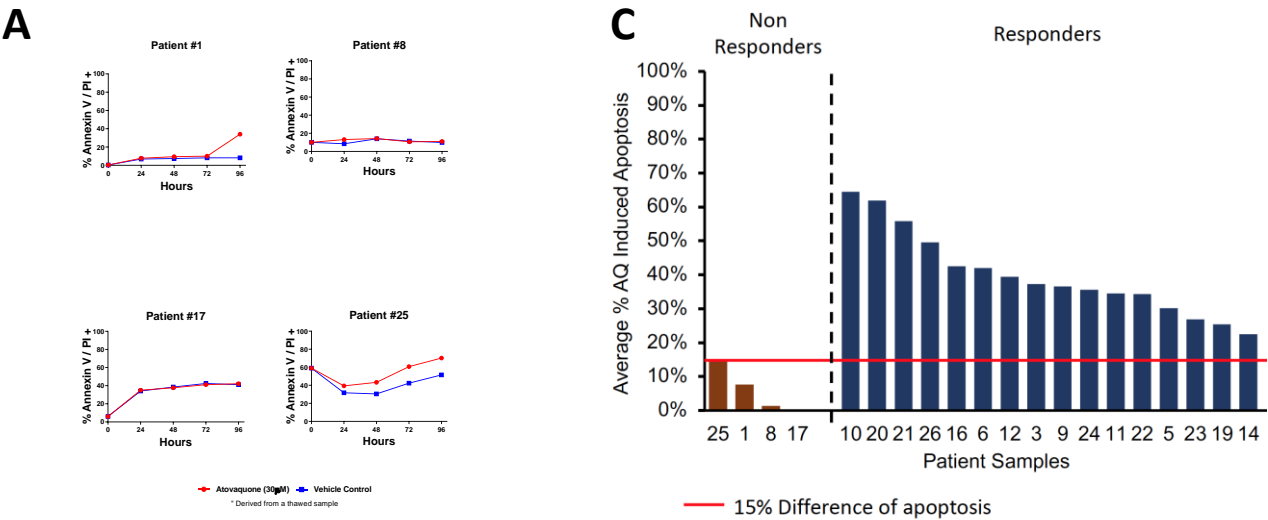


Supplementary Figure SF6

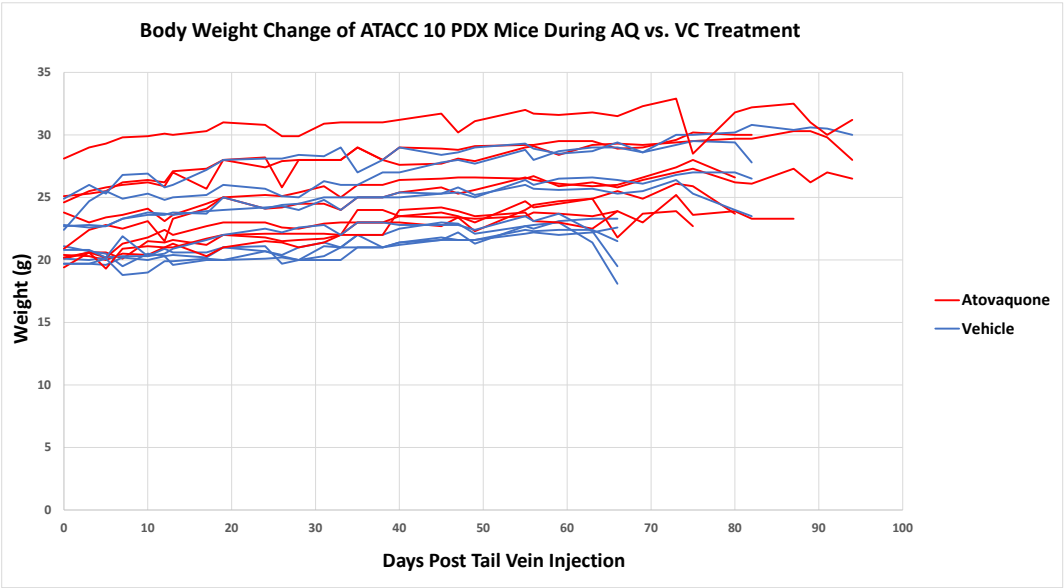
Fresh vs. Thawed Samples



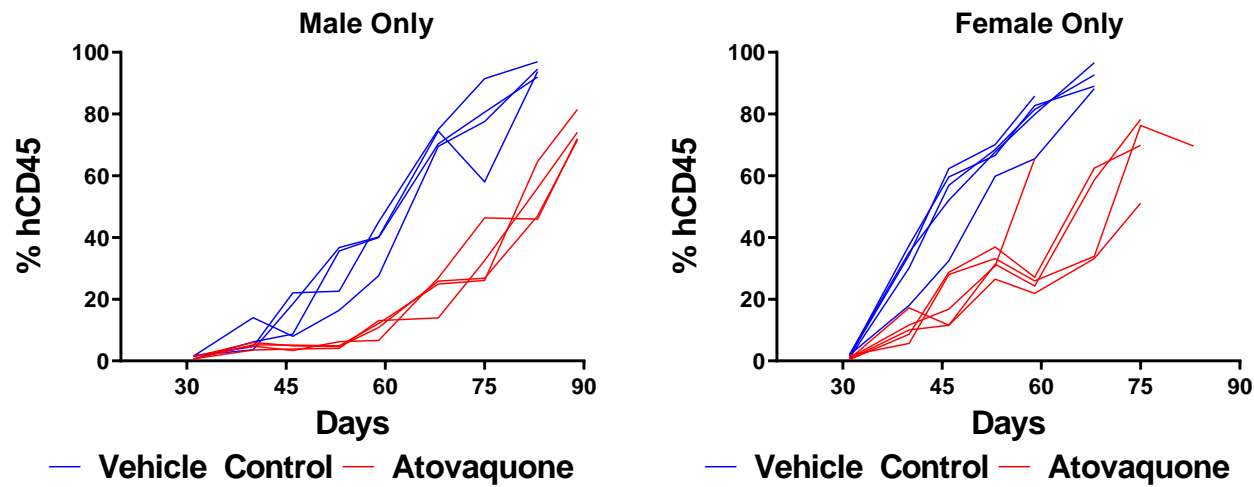
Supplementary Figure SF7



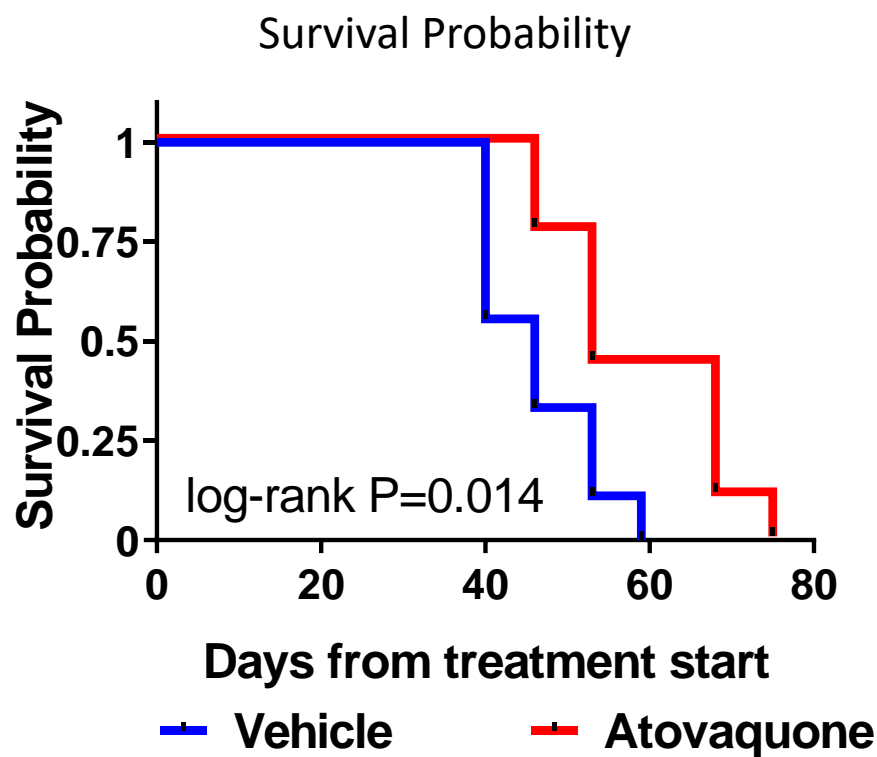
Supplementary Figure SF8



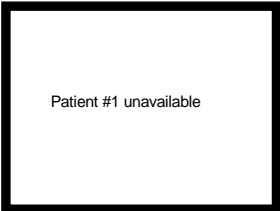
Individual Mouse Disease Burden



Supplementary Figure SF10



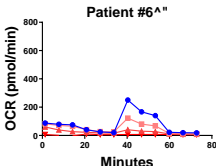
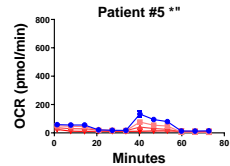
OCR for All Study Patients



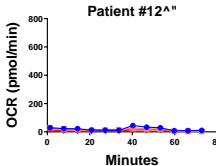
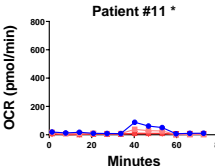
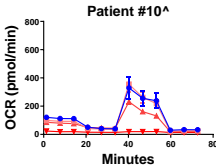
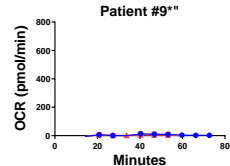
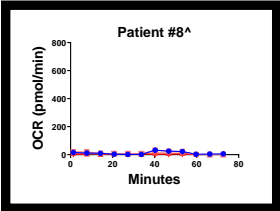
Patient #2 unavailable

Patient #3 unavailable

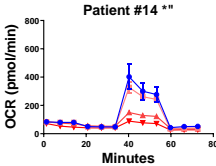
Patient #4 unavailable



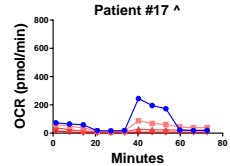
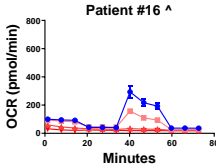
Patient #7 unavailable



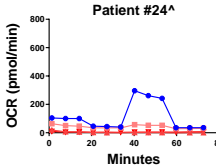
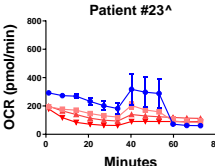
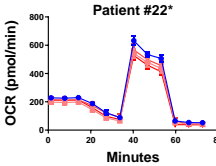
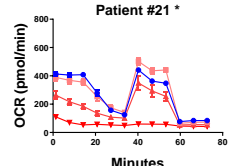
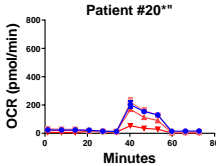
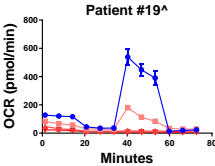
Patient #13 unavailable



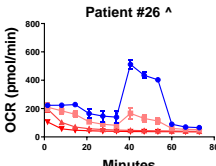
Patient #15 unavailable



Patient #18 unavailable



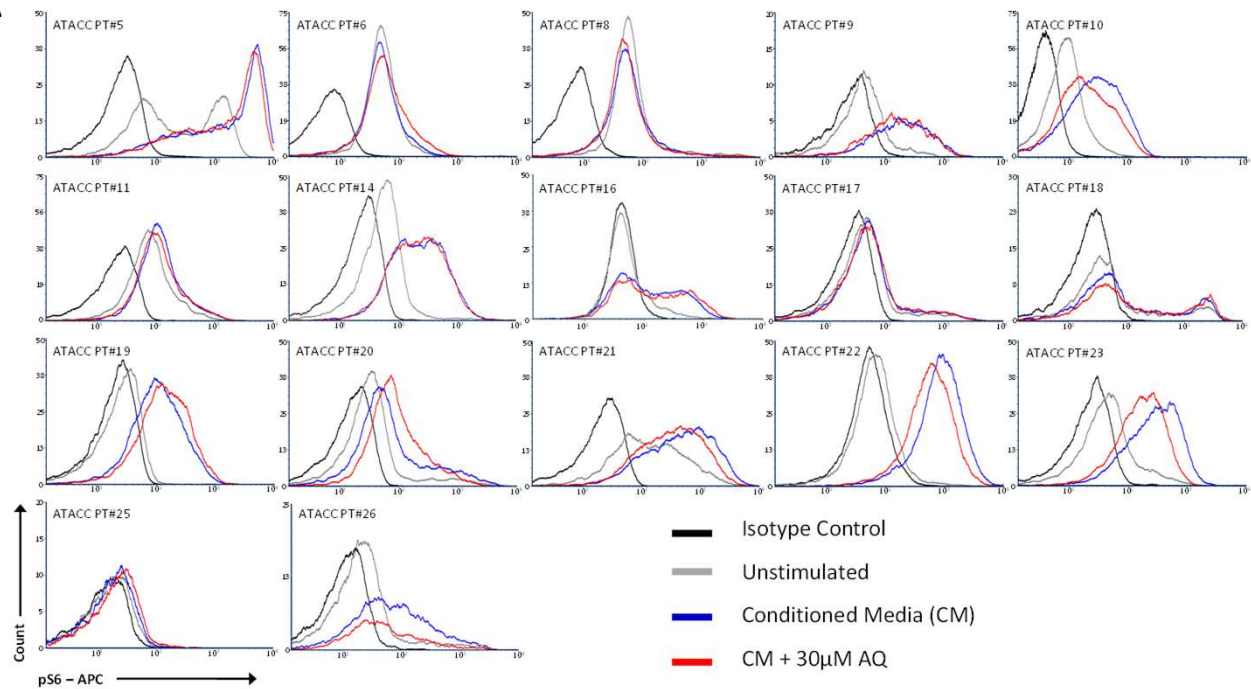
Patient #25 unavailable



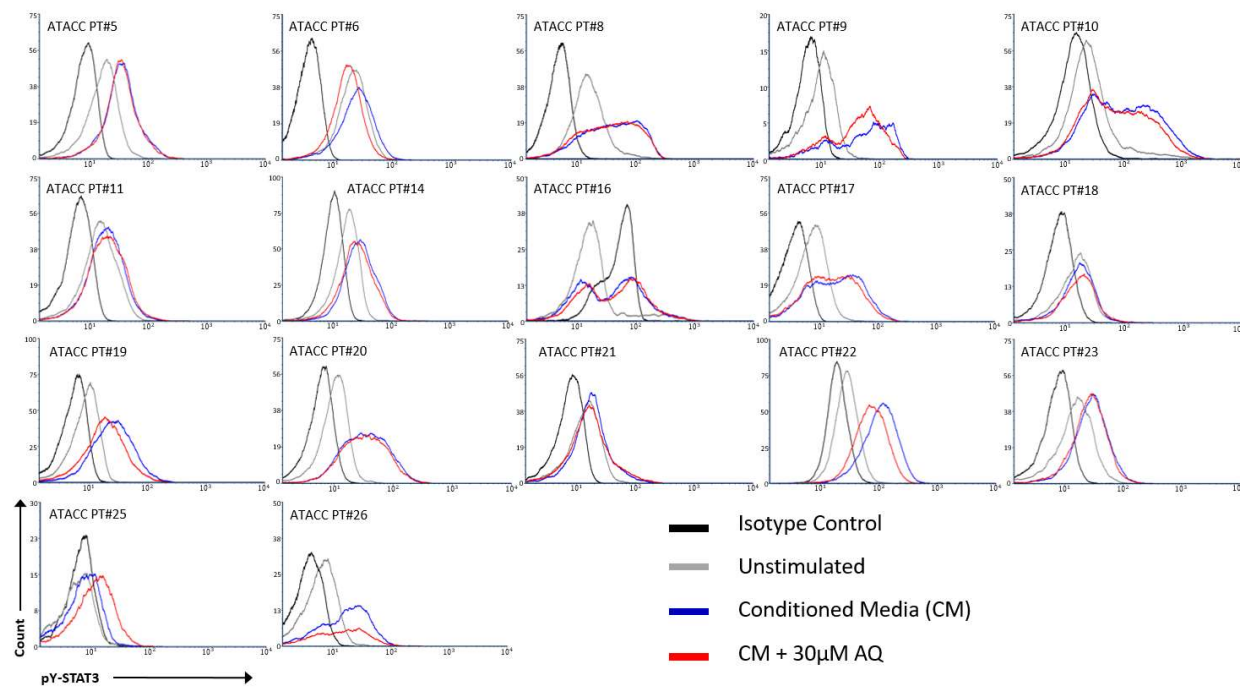
^: 100k cells
*: 200k cells
": thawed sample

Supplementary Figure SF12

A



B



Supplementary Figure SF12

