

Supplemental Data

<u>Target</u>
β-Catenin
CD8
B7-H3
CD4
FOXP3
Mouse IgG1
CD68
PTEN
IgG Rabbit Isotype
CD14
S6
GZMB
Ki-67
β-2-macroglobulin
Histone H3
AKT
CD3
CD66B
VISTA
PD-1
pSTAT3
CD44
STAT3
CD56
PDL-1
CD45
p-AKT
HLA-DR
CD20
pan-Cytokeratin
CD45RO
Bcl-2
B7-H4 VTCN1
STING TMEM173
IDO-1
CD11c
ICOS CD278
OX40L CD252 TXGP1
CD163

Table S1: List of antigens analysed in this study

A

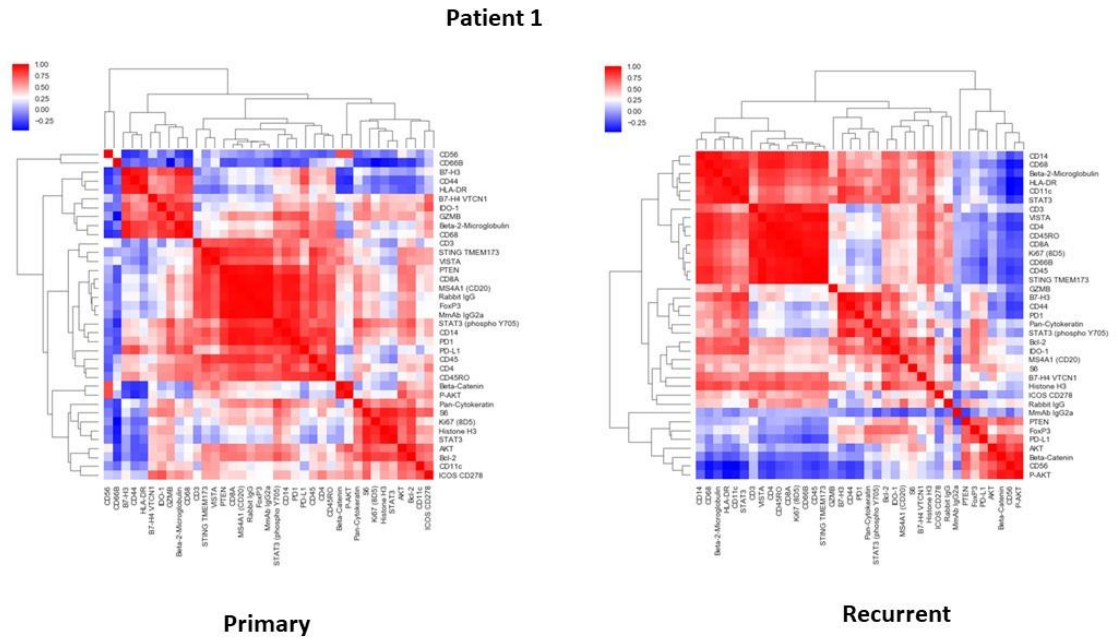


Figure S1A : Loussouarn et al.

B

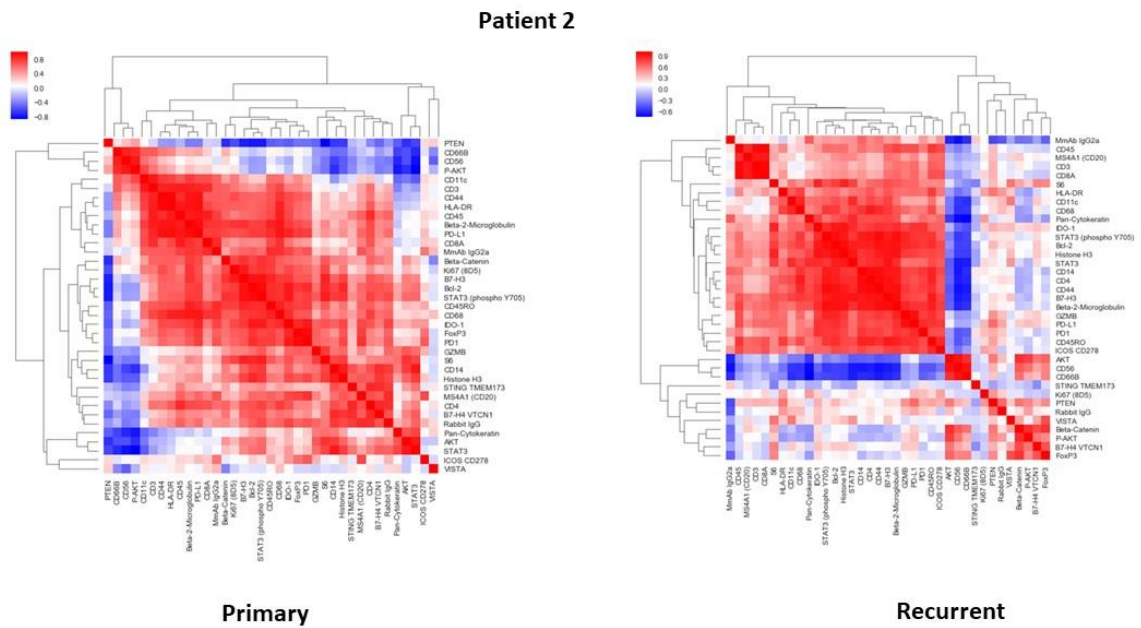


Figure S1B : Loussouarn et al.

C

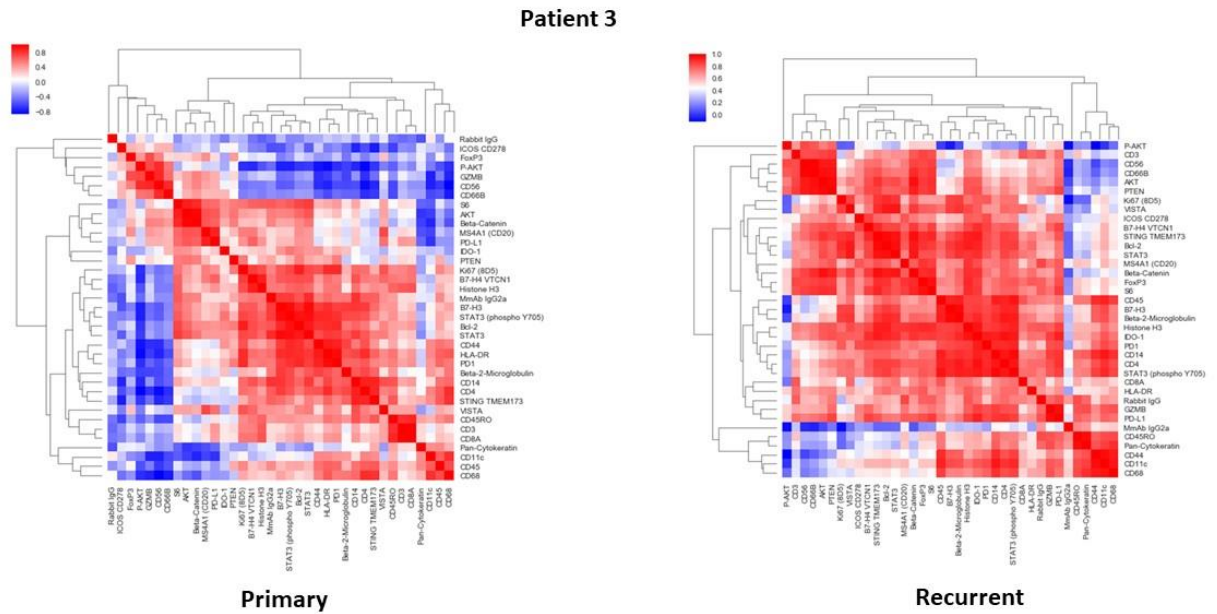


Figure S1C: Loussouarn et al.

D

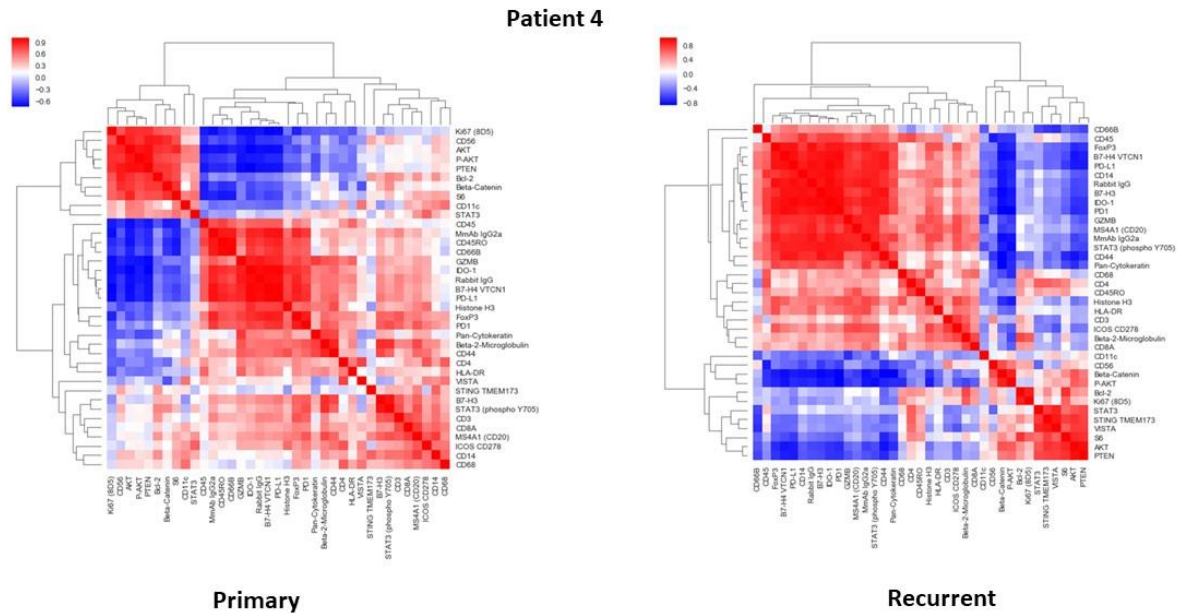


Figure S1D: Loussouarn et al.

Patient 5

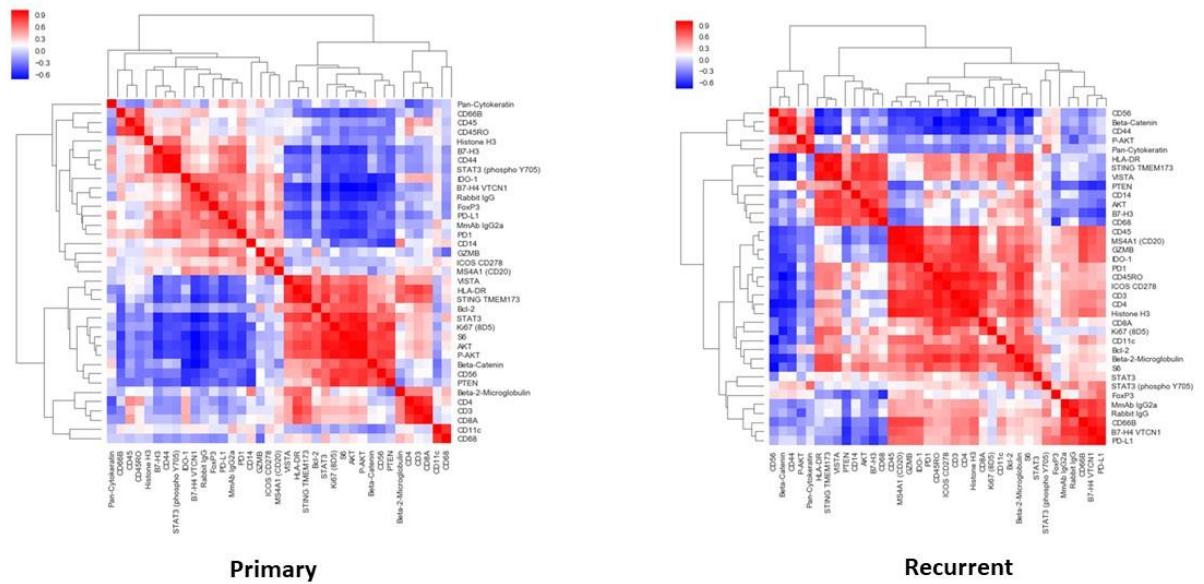


Figure S1E: Loussouarn et al.

Figure S1 (A-E): correlation matrix between the DSP markers in the 5 primary and recurrent tumors.

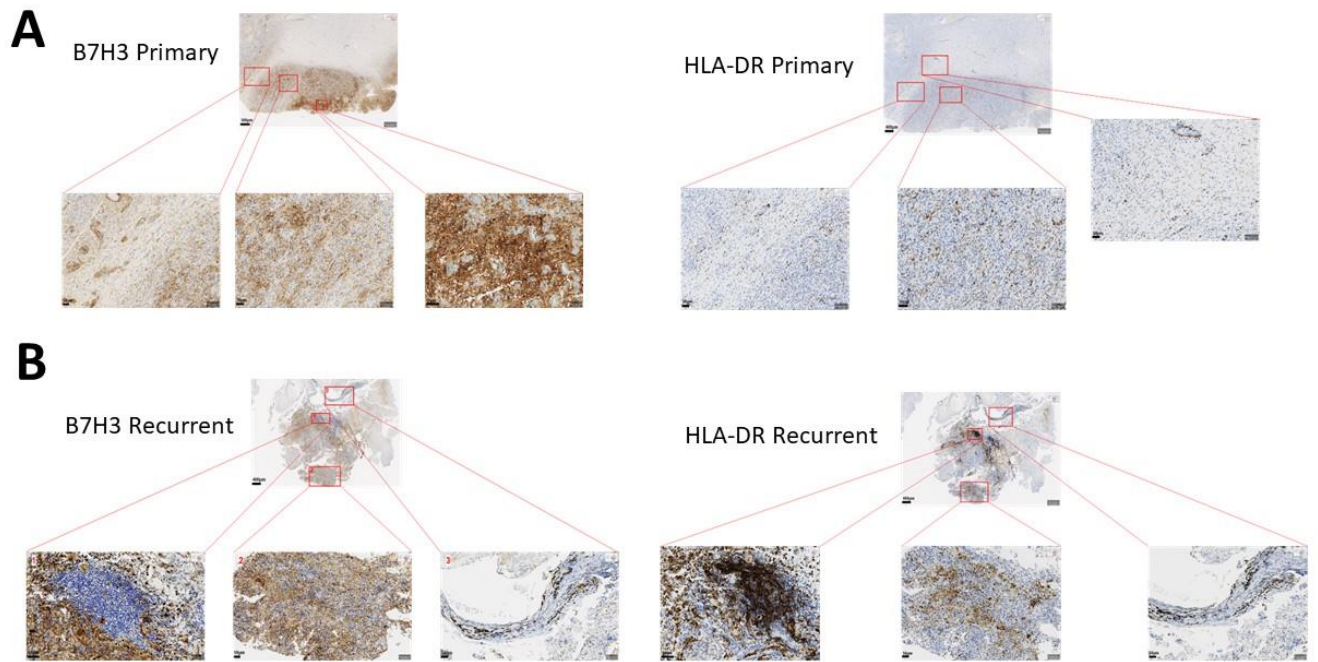


Figure S2: Loussouarn et al.

Figure S2: Immuno-histochemistry images of tumor labelling of HLADR and B7H3 in representative primary GBM (A) and recurrent GBM (B).