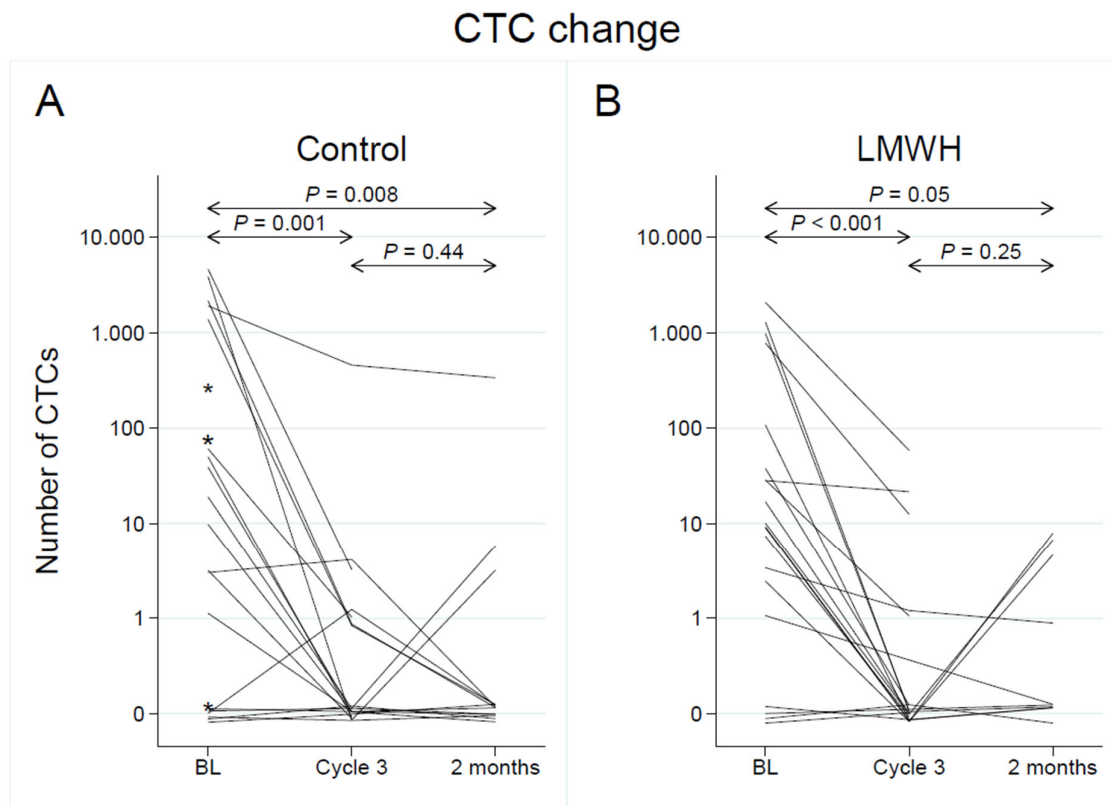
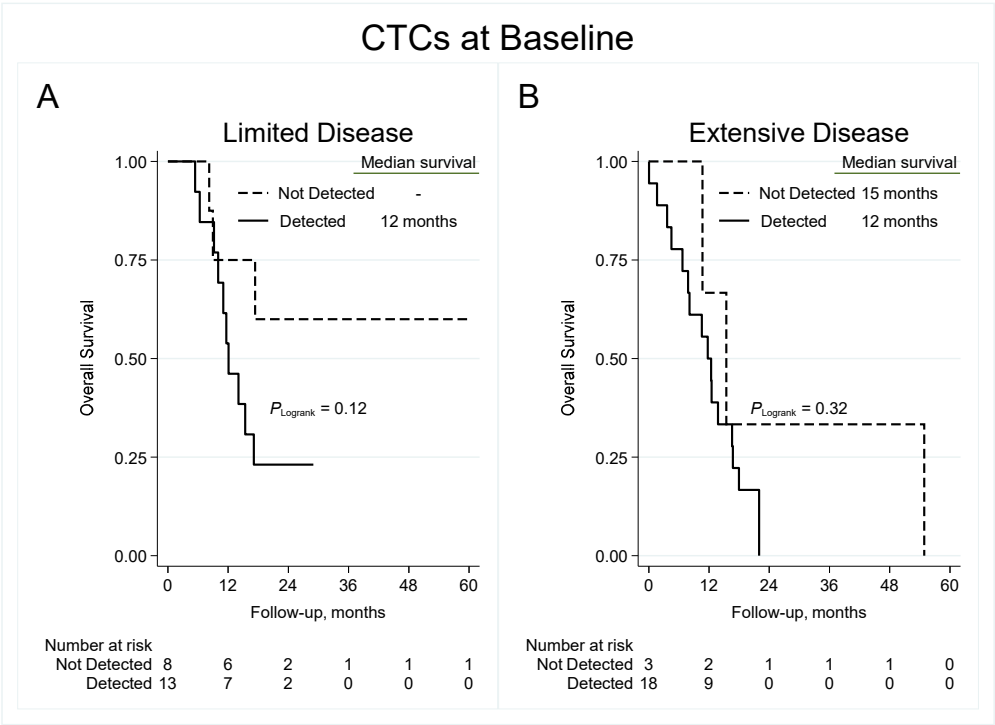


Supplementary Figure S1: Longitudinal analysis of circulating tumor cells from baseline to chemotherapy cycle 3 and at 2-month follow-up, by study arm.



Panel A represents patients in the control arm ($N=22$), while panel B displays patients in the LMWH arm ($N=20$). Note: The y-axis scale is logarithmic, base 10. CTC counts of zero are plotted at $y=0.1$ on this scale, a point which therefore has been labelled 0. CTC = circulating tumor cell. *Patients where baseline samples only were available for analysis ($N=3$).

Supplementary Figure S2: Kaplan-Meier analysis of overall survival by detection of baseline CTCs and by stage; limited (A) and extensive (B) disease.



CTC = circulating tumor cell.

Supplementary Table S1. Study population baseline characteristics, by study arm.

	LMWH N=20	Control N=22
Age, years		
Mean \pm SD	67 \pm 7.6	64 \pm 5.8
Gender, N (%)		
Female	12 (60)	11 (50)
Male	8 (40)	11 (50)
Performance status, N (%)		
0-1	14 (70)	17 (77)
2-3	6 (30)	5 (23)
Disease stage, N (%)		
Limited disease	11 (55)	10 (45)
Extensive disease	9 (45)	12 (55)
Number of chemotherapy cycles, N (%)		
< 4	1 (5)	1 (5)
\geq 4	19 (95)	21 (95)
Additional chemotherapy, N (%)		
1 subsequent line	7 (35)	7 (32)
\geq 2 subsequent lines	1 (5)	2 (9)
No additional chemotherapy	12 (60)	13 (59)
Radiotherapy, N (%)*		
Prophylactic cranial	13 (72)	15 (71)
Thoracic	12 (67)	13 (62)
Metastatic lesion	4 (22)	5 (24)
No radiotherapy	2 (11)	3 (14)
Missing	2	1

LMWH = Low-molecular-weight heparin; SD = Standard deviation.

* Patients may have received radiotherapy towards more than one site.

Supplementary Table S2. Adjusted effects of CTC detection on overall survival at each time-point.

	HR (95% CI)	<i>P</i> -value
Baseline		
CTC = 0	1 (ref.)	
CTC \geq 1	2.11 (0.78-5.70)	0.140
At chemotherapy cycle 3		
CTC = 0	1 (ref.)	
CTC \geq 1	2.26 (0.92-5.57)	0.076
At 2-month follow-up		
CTC = 0	1 (ref.)	
CTC \geq 1	2.31 (0.79-6.74)	0.126

Adjusted for disease stage, age (linear), gender and performance status (0-1 vs. 2-3).
 CTC = circulating tumor cell; HR = hazard ratio; CI = confidence interval.