

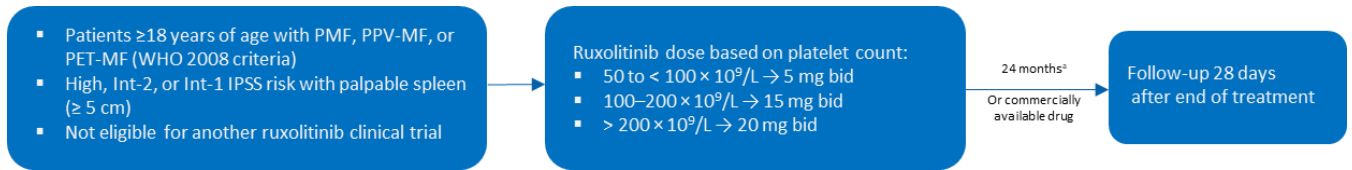
## Supplementary materials

**Supplementary Table S1.** Number of patients with PMF achieving a spleen response at Week 24 stratified by time since last biopsy.

	LGF	HGF
	n (%) [95% CI]	n (%) [95% CI]
	N=113	N=384
<b>Week 24</b>		
Ruxolitinib initiated $\leq 2$ years since last biopsy	72 (63.7) [54.1, 72.6]	230 (59.9) [54.8, 64.8]
Ruxolitinib initiated $> 2$ years since last biopsy	51 (60.7) [49.5, 71.2]	96 (46.2) [39.2, 53.2]
<b>At any time during the study</b>		
Ruxolitinib initiated $\leq 2$ years since last biopsy	109 (81.3) [73.7, 87.5]	382 (73.0) [69.0, 76.8]
Ruxolitinib initiated $> 2$ years since last biopsy	72 (71.3) [61.4, 79.9]	172 (63.7) [57.7, 69.4]

Spleen response was assessed by reduction in spleen length from baseline and expressed as the proportion of patients with a  $\geq 50\%$  reduction in palpable spleen length. CI, confidence interval; HGF, high-grade fibrosis; LGF, low-grade fibrosis; PMF, primary myelofibrosis.

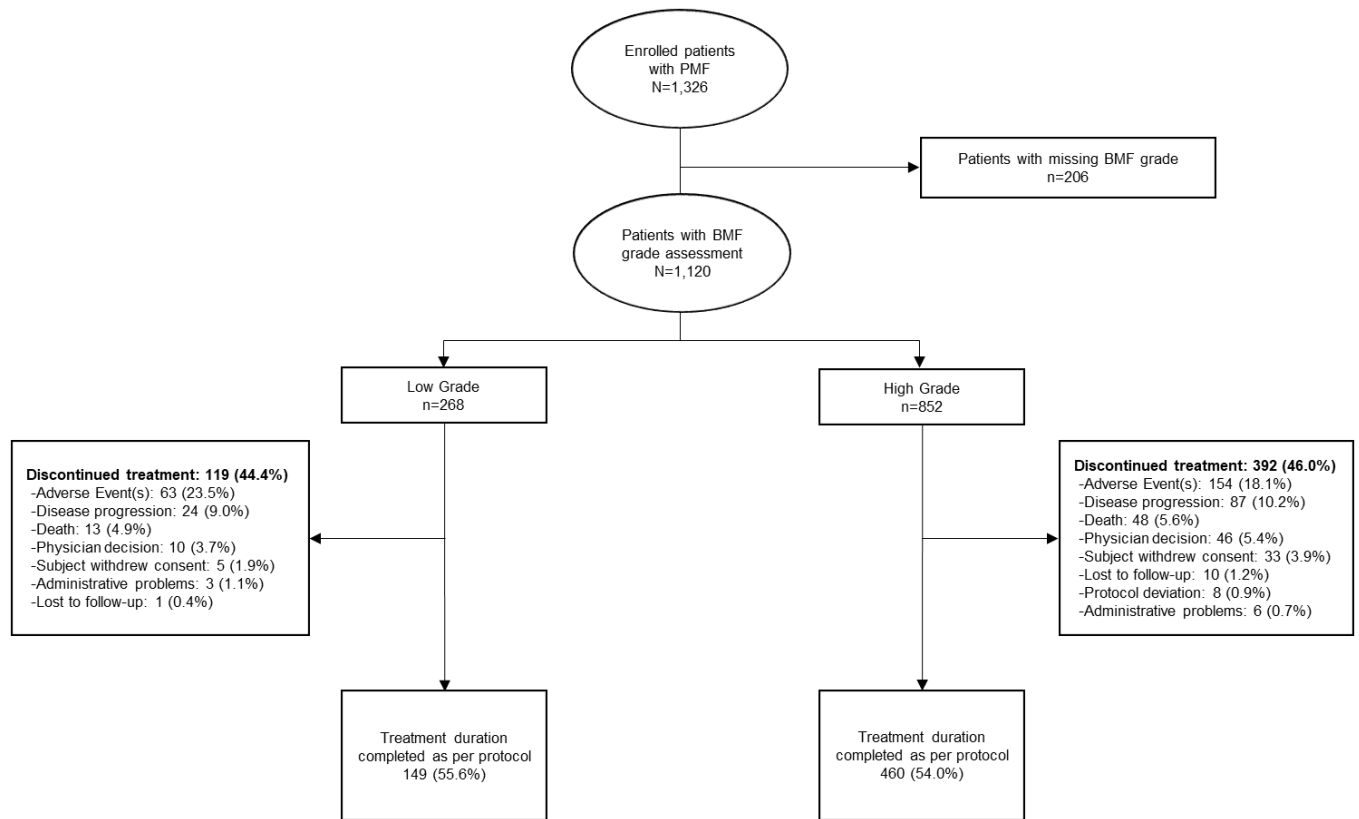
## Supplementary Figure S1. JUMP study design.



<sup>a</sup> Patients could also discontinue treatment in the event disease progression, unacceptable toxicity, death, or discontinuation from the study for any other reason.

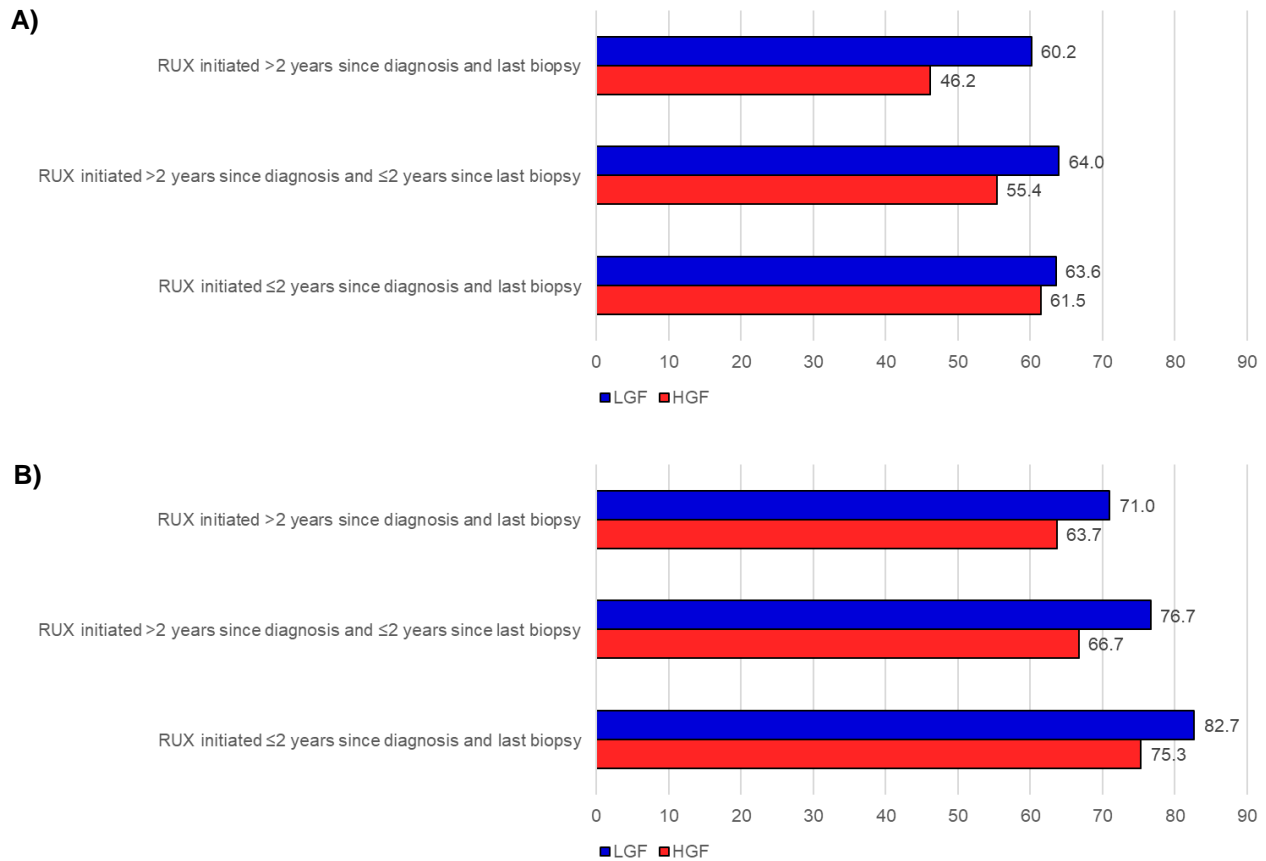
bid, twice daily; Int, intermediate; IPSS, International Prognostic Scoring System; PET-MF, post-essential thrombocythemia myelofibrosis; PMF, primary myelofibrosis; PPV-MF, post-polycythemia vera myelofibrosis.

**Supplementary Figure S2. Patient disposition.**



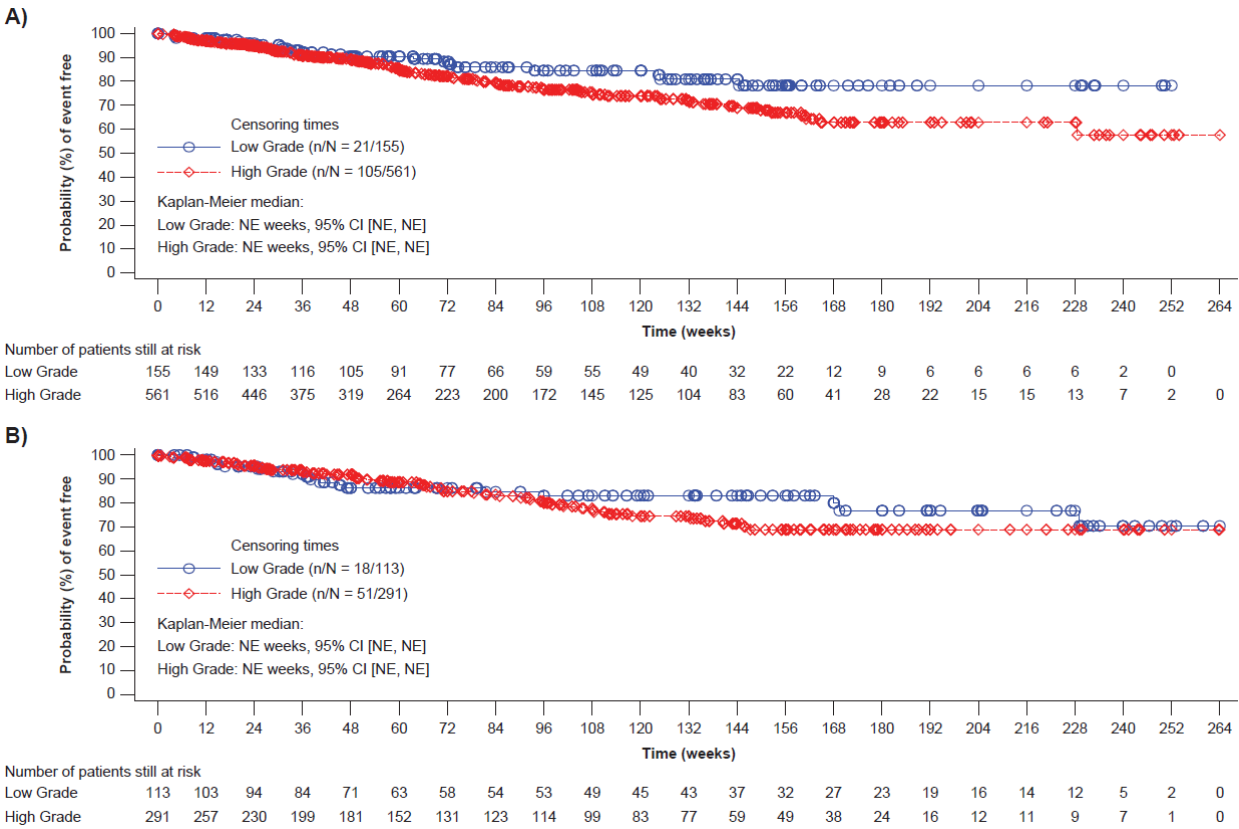
BMF, bone marrow fibrosis; PMF, primary myelofibrosis.

**Supplementary Figure S3. A.** Proportion of patients with PMF achieving a spleen response at Week 24 stratified by time since diagnosis and time since last biopsy. **B.** Proportion of patients with PMF achieving a spleen response at any time during the study stratified by time since diagnosis and time since last biopsy.



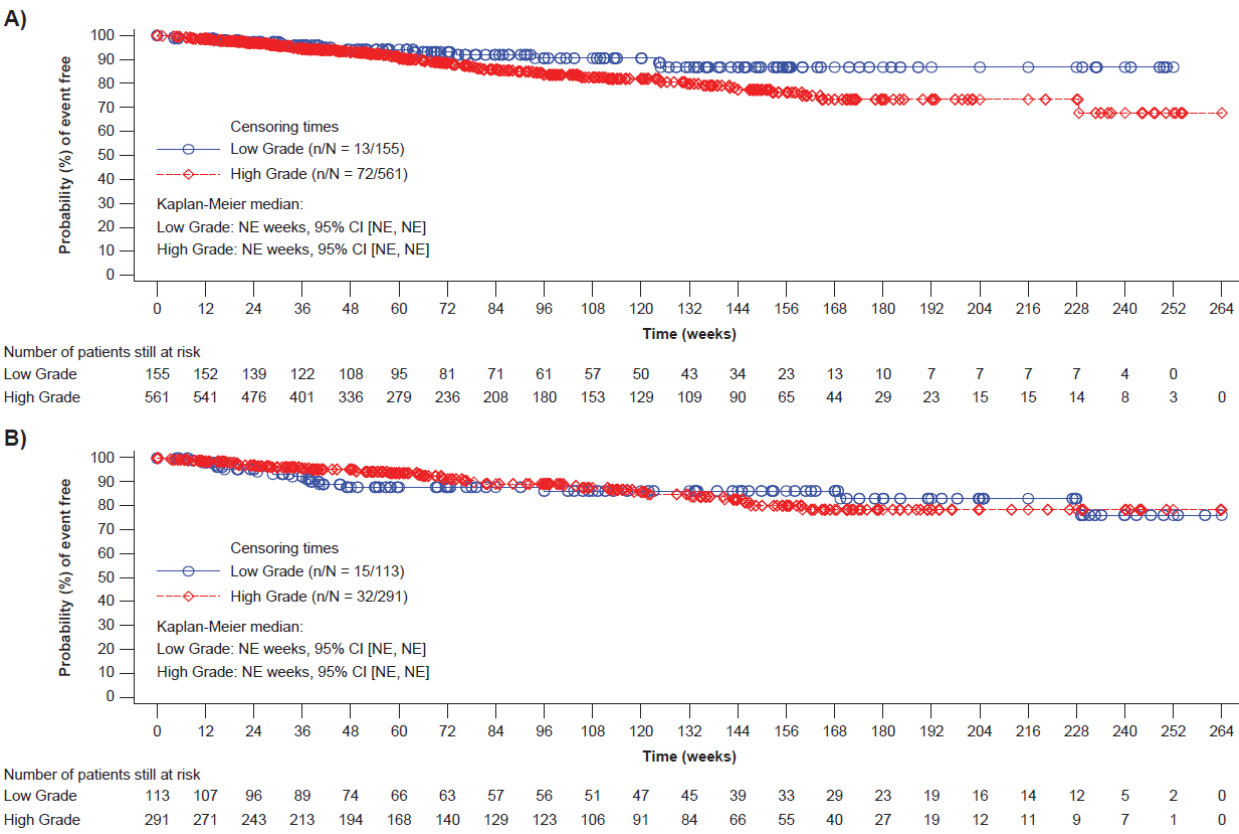
HGF, high-grade fibrosis; LGF, low-grade fibrosis; PMF, primary myelofibrosis; RUX, ruxolitinib.

**Supplementary Figure S4.** Progression-free survival in patients with PMF stratified by time since last biopsy. **A**, Patients who started ruxolitinib treatment  $\leq 2$  years since their last biopsy. **B**, Patients who started ruxolitinib treatment  $>2$  years since their last biopsy.



CI, confidence interval; NE, not estimable; PMF, primary myelofibrosis.

**Supplementary Figure S5.** Overall survival in patients with PMF stratified by time since last biopsy. **A**, Patients who started ruxolitinib treatment  $\leq 2$  years since their last biopsy. **B**, Patients who started ruxolitinib treatment  $>2$  years since their last biopsy.



CI, confidence interval; NE, not estimable; PMF, primary myelofibrosis.