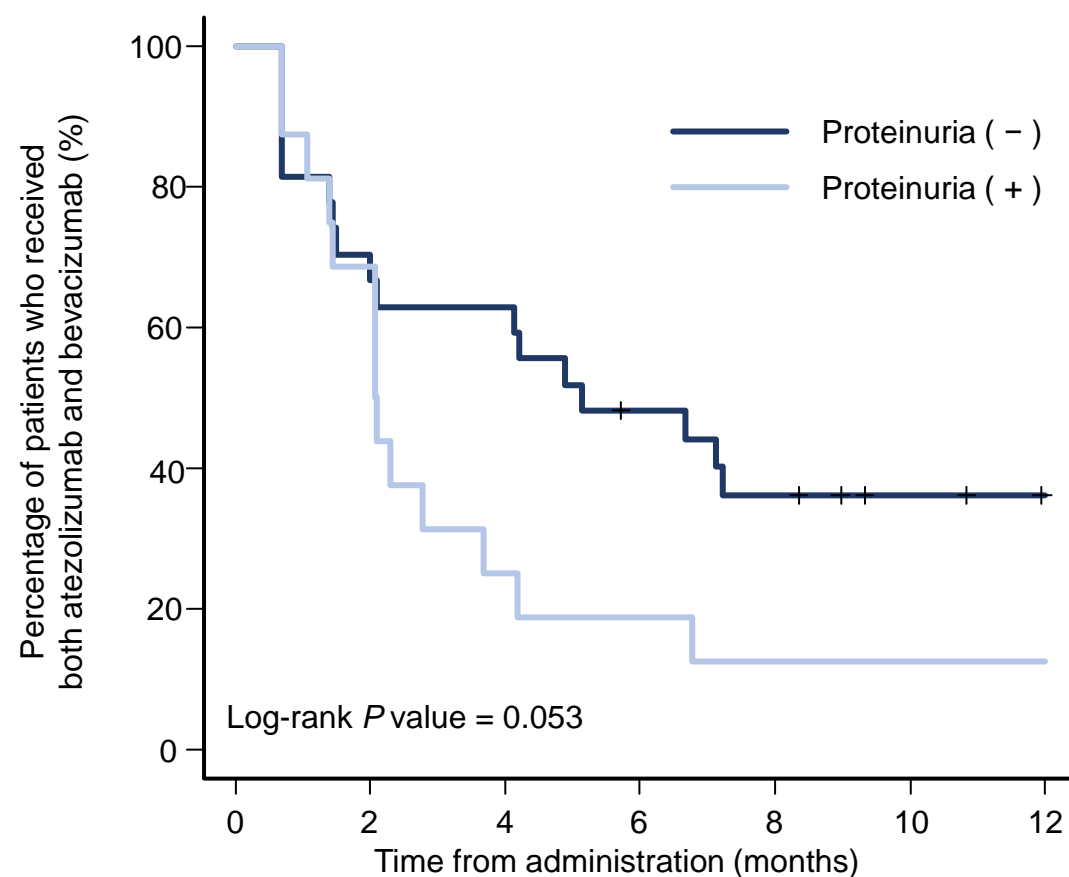


Supplemental Figure S1. Relative dose intensity of lenvatinib based on pretreatment proteinuria. Positive pretreatment proteinuria was defined as a ratio of urinary protein to creatinine of ≥ 0.15 g/g creatinine. Within each box, horizontal black lines denote median values; boxes extend from the 25th to the 75th percentile of each group's distribution of values; vertical extending lines denote adjacent values (i.e., the most extreme values within 1.5 interquartile range of the 25th and 75th percentile of each group); dots denote observations outside the range of adjacent values.



Number at risk							
Proteinuria (-)	27	19	17	12	9	6	4
Proteinuria (+)	16	11	4	3	2	2	2

Supplemental Figure S2. Kaplan-Meier analysis of treatment duration with atezolizumab and bevacizumab without discontinuation of bevacizumab due to adverse events. Kaplan-Meier estimates were calculated for patients who received atezolizumab and bevacizumab without skipping bevacizumab doses due to adverse events. Positive pretreatment proteinuria was defined as a ratio of urinary protein to creatinine of ≥ 0.15 g/g creatinine.