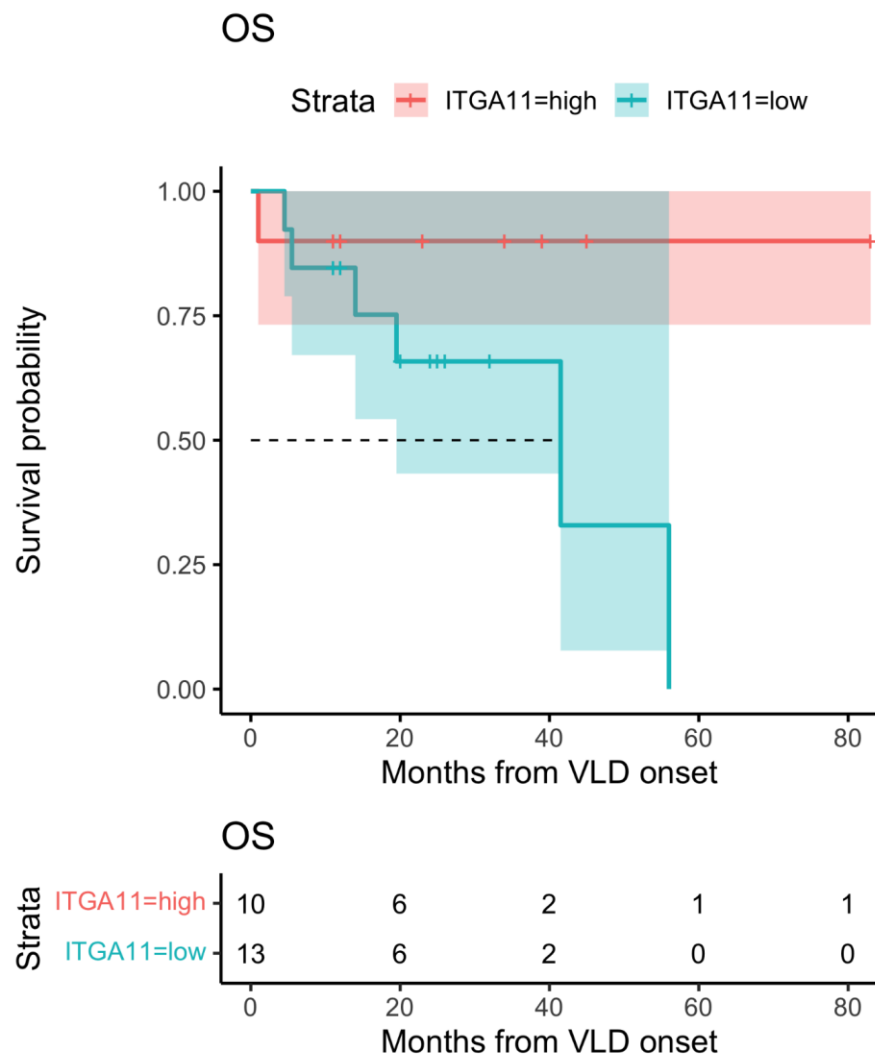


Supplementary Figure S1: Survival analysis dependent on LDH levels  
 (A) Progression-free-survival in normal LDH showing a significantly better prognostic value than with elevated LDH ( $p = 0.03$ ). (B) Overall-survival in normal LDH showing a borderline-significant better prognostic value than with elevated LDH ( $p = 0.06$ ).



Supplementary Figure S2: Survival analysis dependent on ITGA11-Levels showing a better prognostic overall survival sub-significance ( $p = 0.147$ )