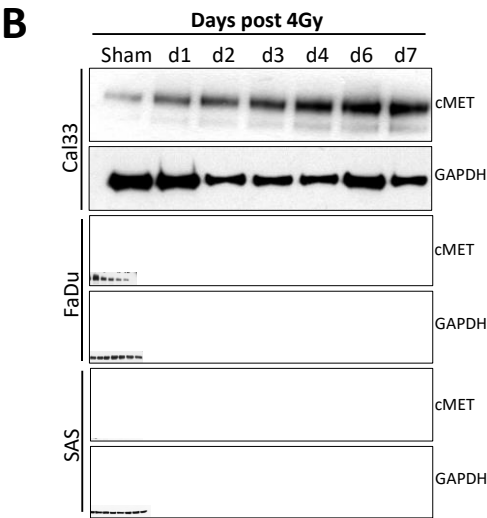
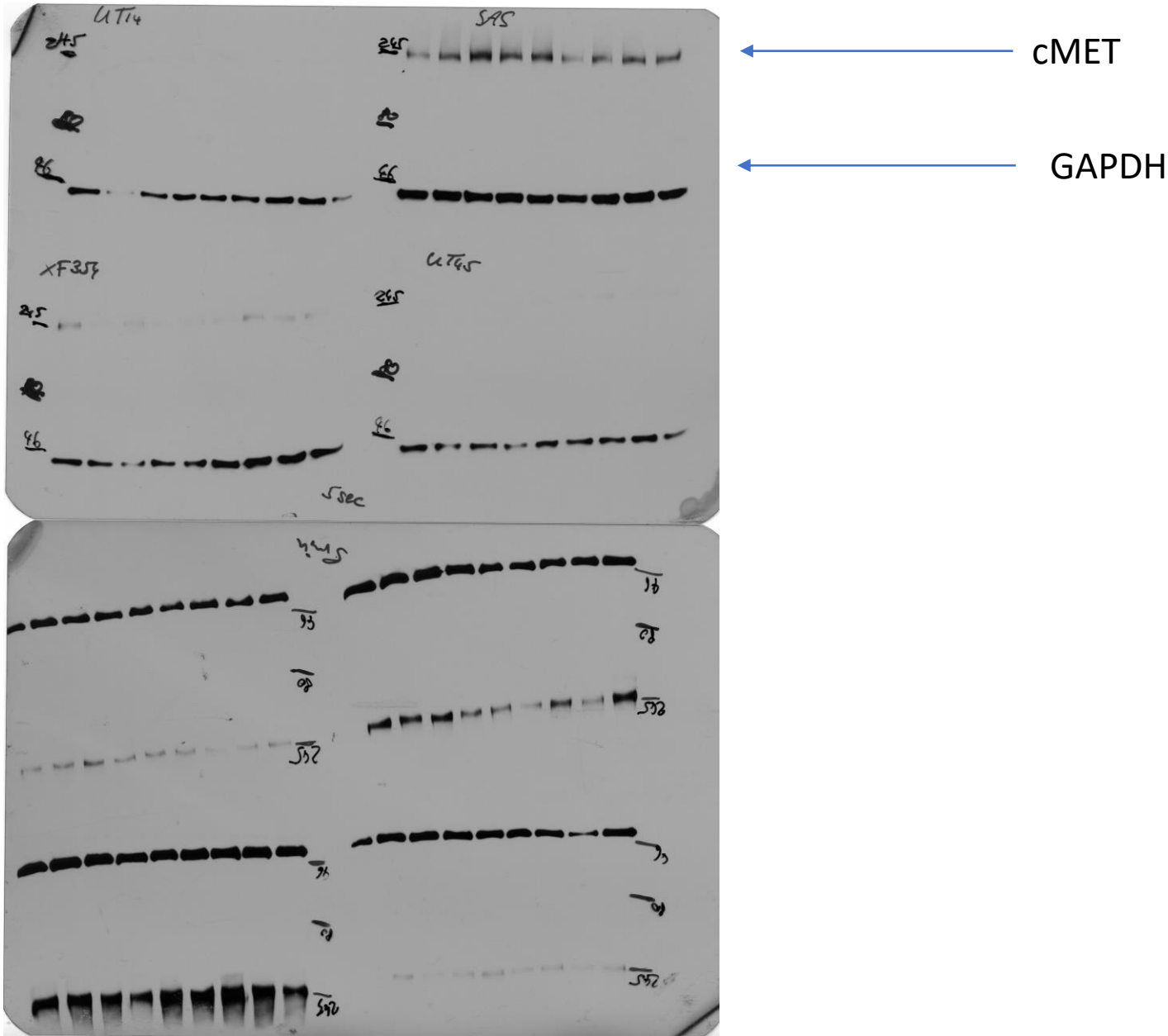


Original Images for Blots/Gels (Lüttich et al.)

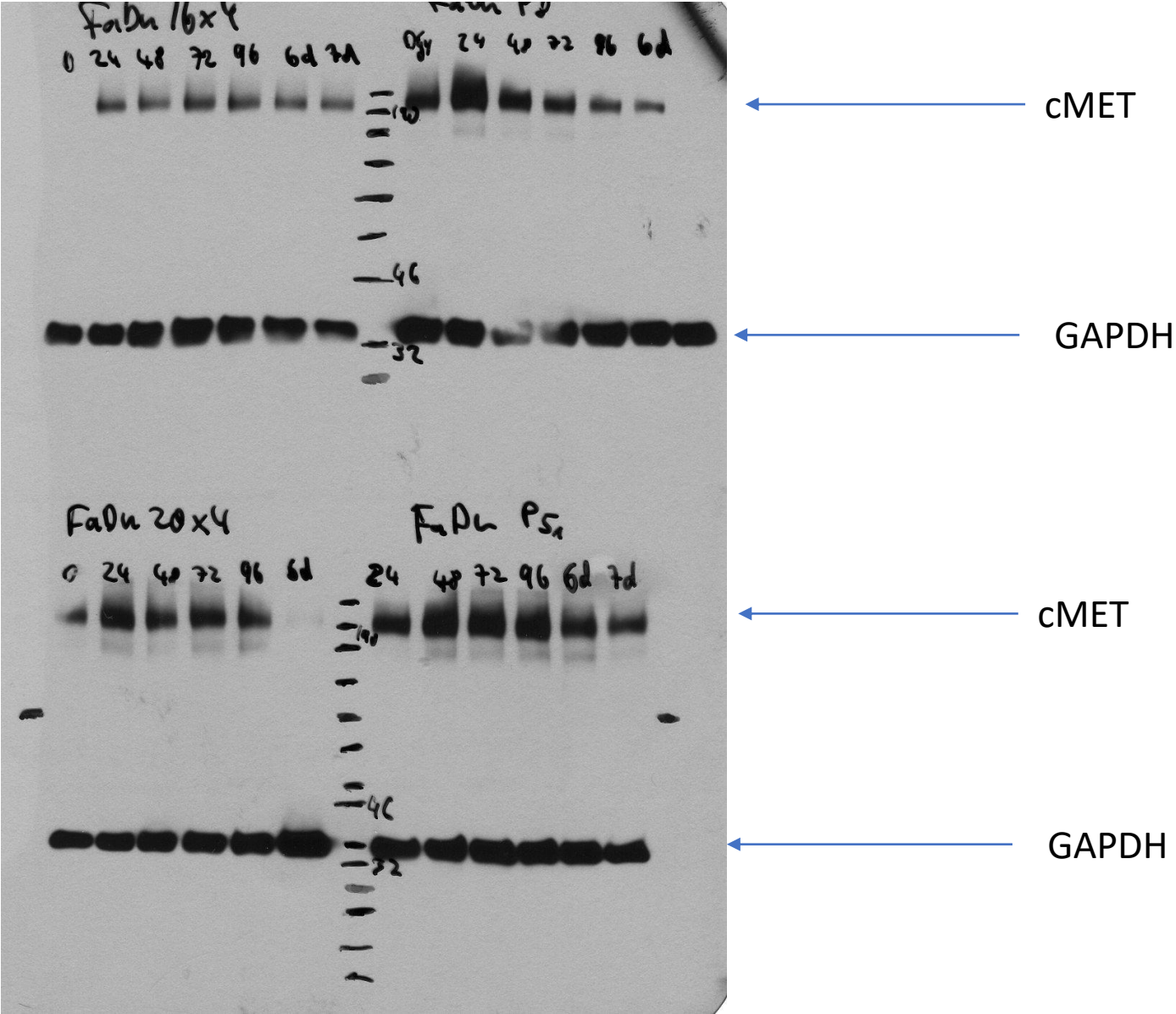
Figure 3.



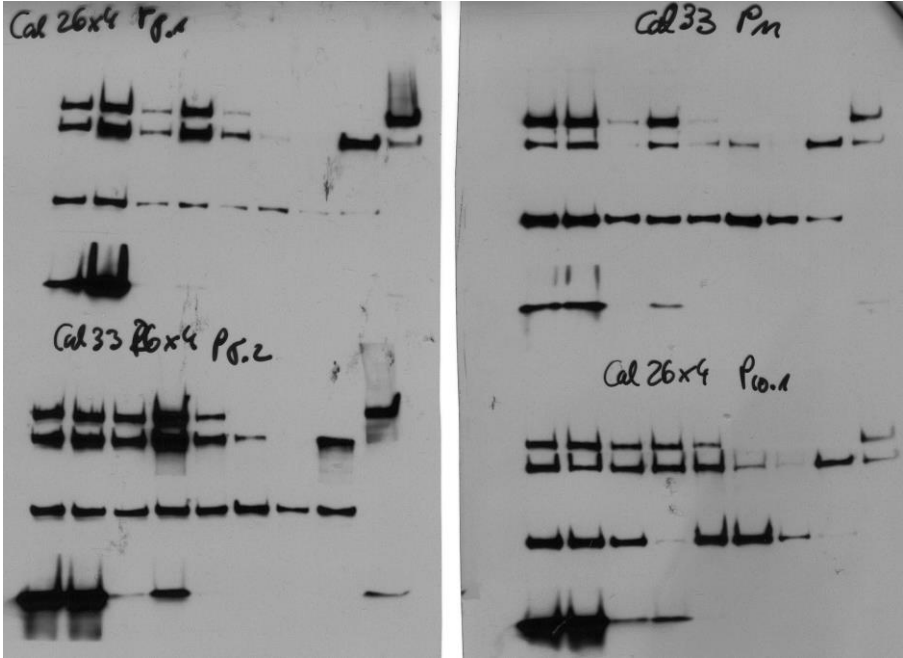
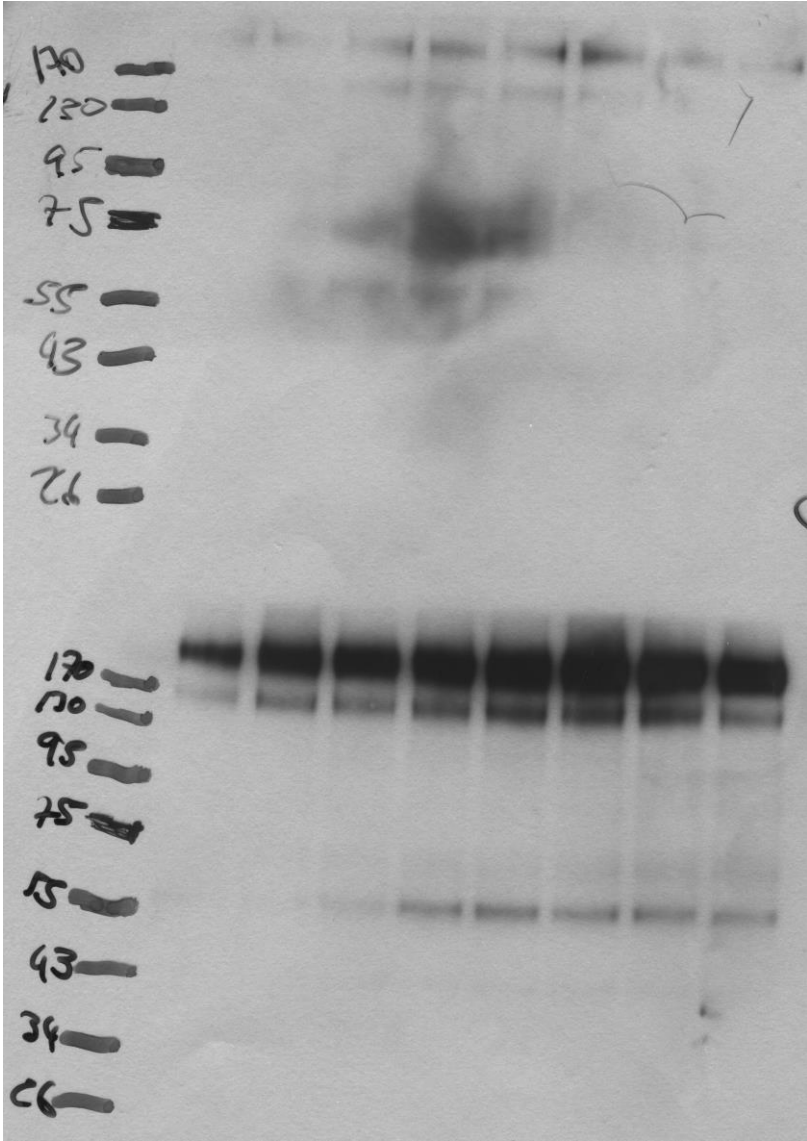
Raw data file: Stephan Heiden – my pictures – WB pics: SAS UT14 XF354 UT45



Raw data file: Stephan Heiden – my pictures – WB pics: FaDuRSRR 0-7 1x4Gy

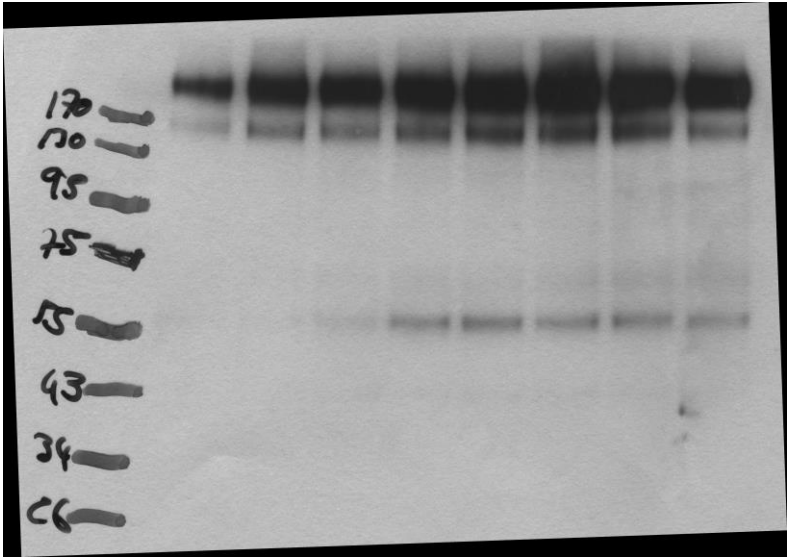


Raw data file: Stephan Heiden – my pictures – WB pics: Cal33 RSRR c-met 0-7 1x4Gy 30 sec



GAPDH

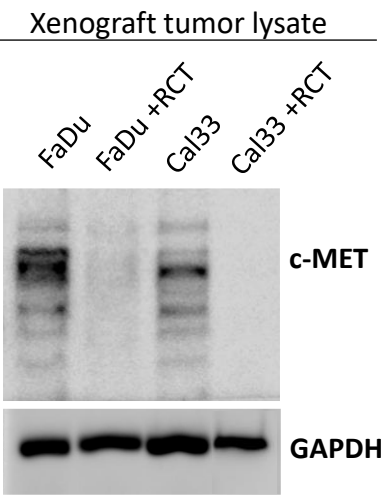
Raw data file: Stephan Heiden – my pictures – WB pics: 30 sec 1x4



cMET

Figure S3.

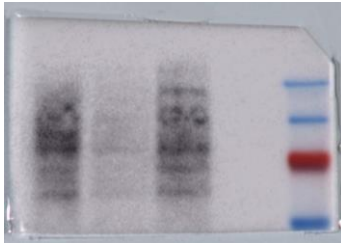
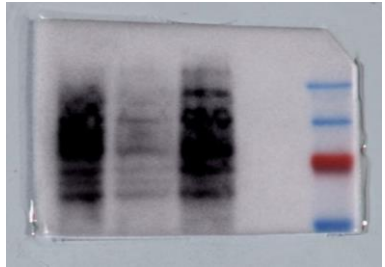
B



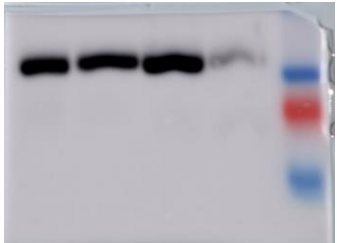
## Previous WB

1st bis-tris gel

FaDu ctl  
FaDu +RCT  
Cal33 ctl  
Cal33 +RCT



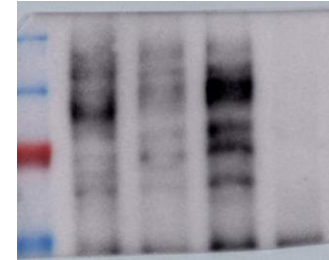
C-met



gapdh

2nd bis-tris gel

FaDu ctl  
FaDu +RCT  
Cal33 ctl  
Cal33 +RCT



C-met



Alpha-tubulin



gapdh

bis-tris gel

C-met

30 sec exposure

15 sec exposure

10 sec exposure

5 sec exposure

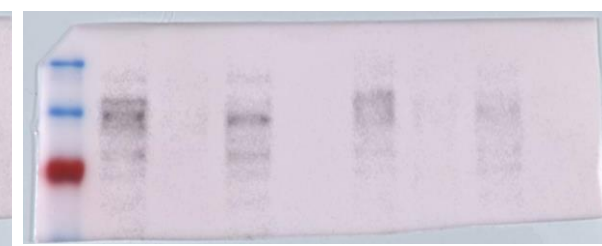
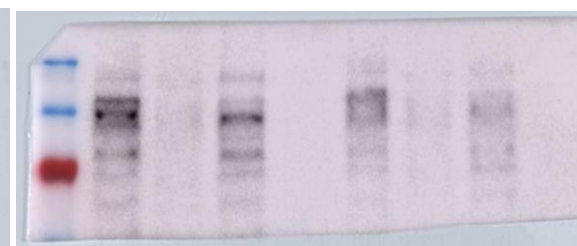
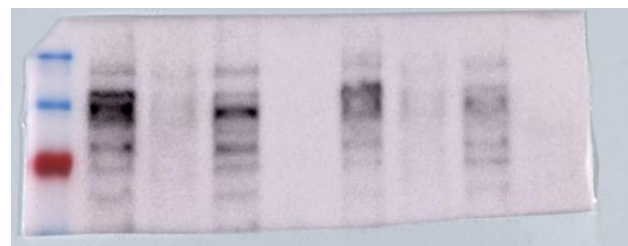
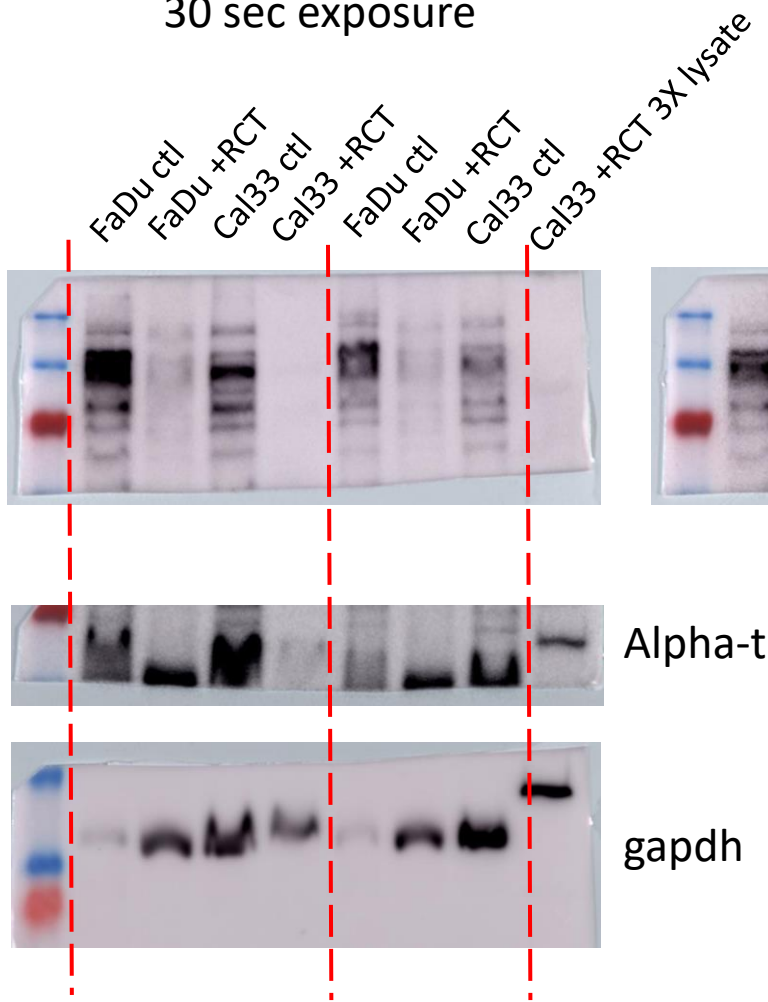
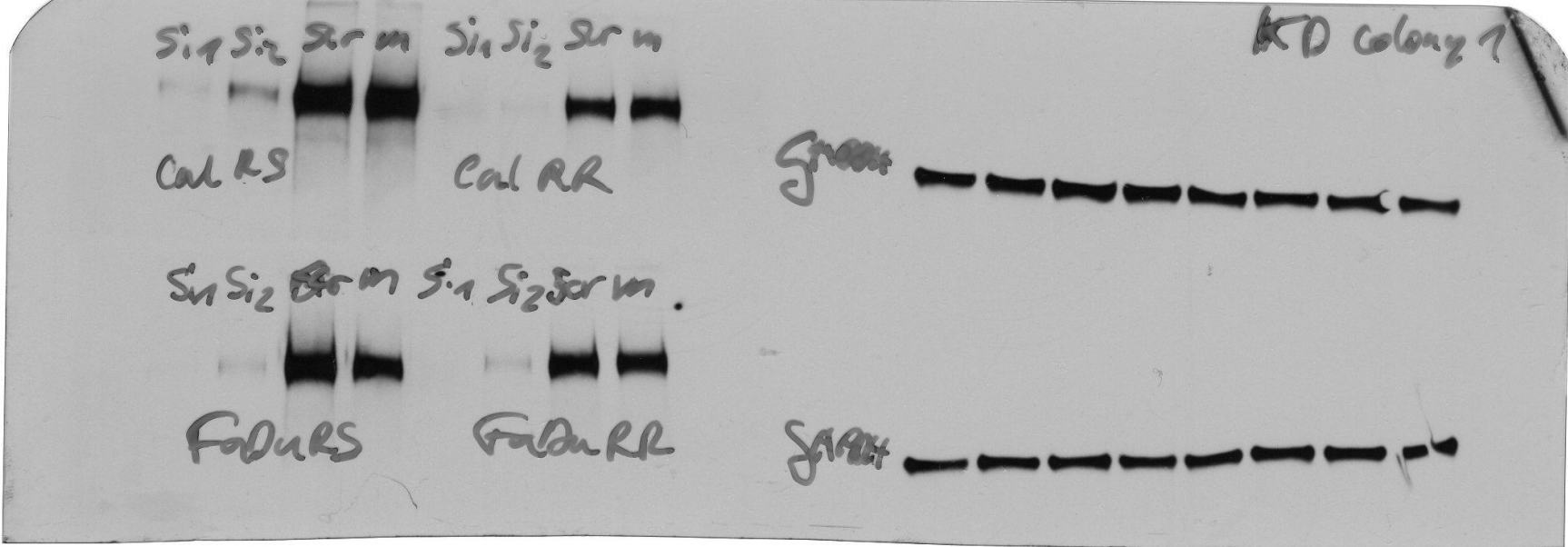
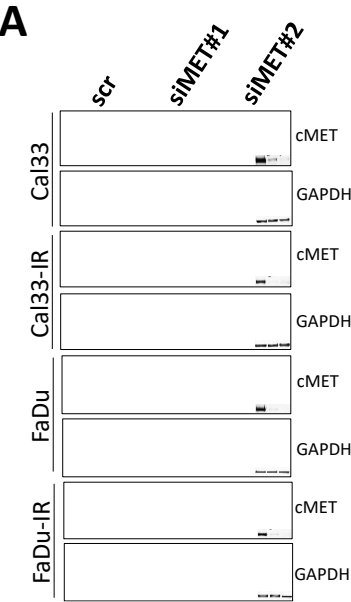


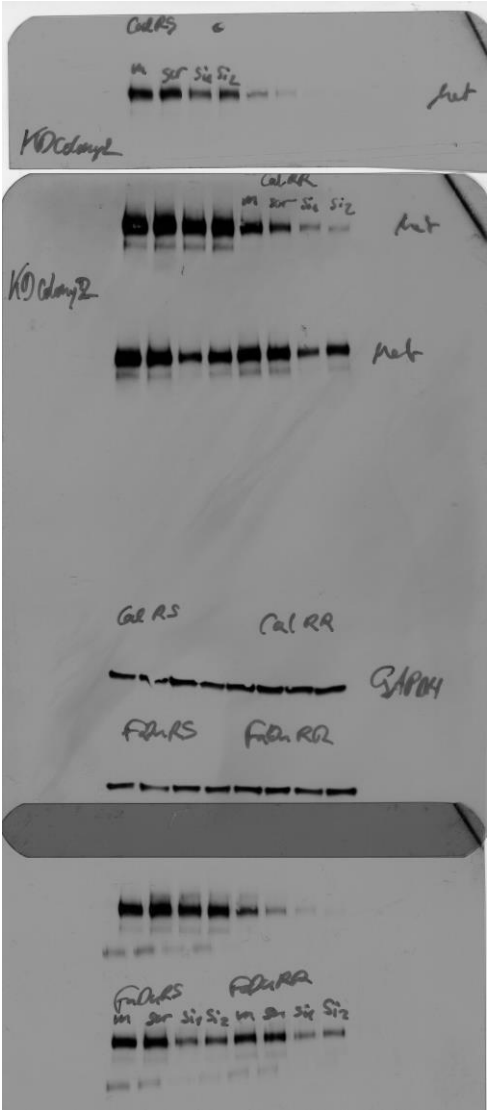


Figure 4.

Raw data file: Stephan Heiden – my pictures – WB pics - knockdown colony 1



Raw data file: Stephan Heiden – my pictures – WB pics - knockdown colony 2



→ cMET

→ GAPDH

Raw data file: Stephan Heiden – my pictures – WB pics - knockdown colony 3

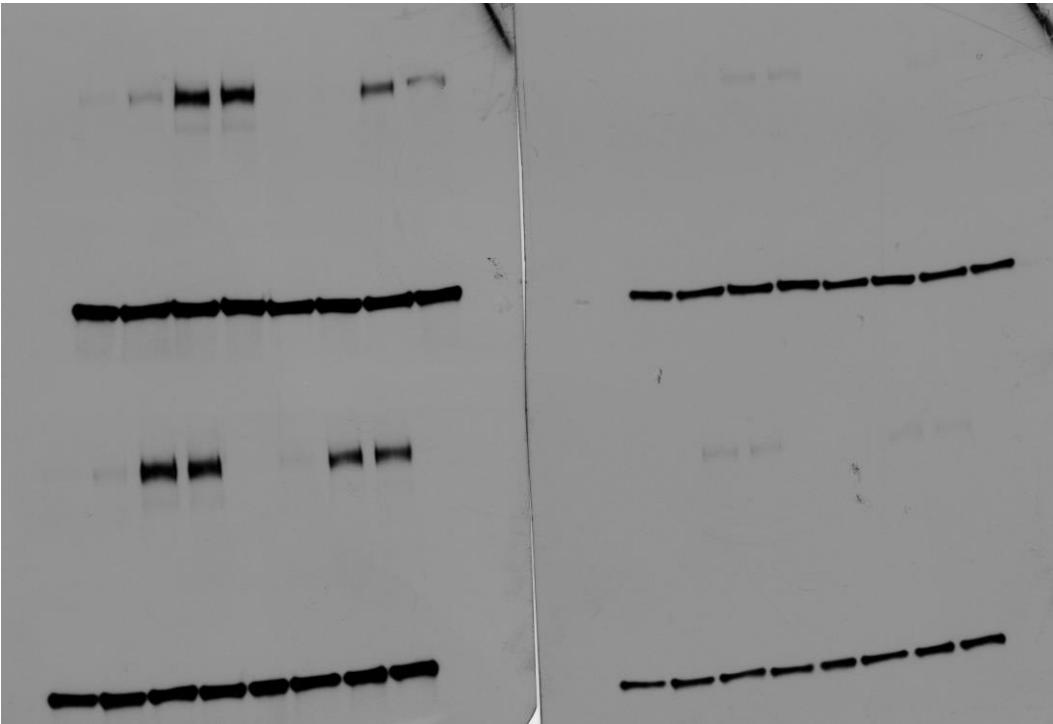
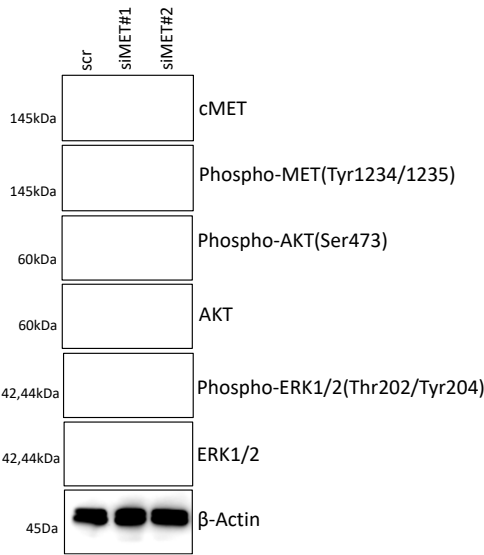


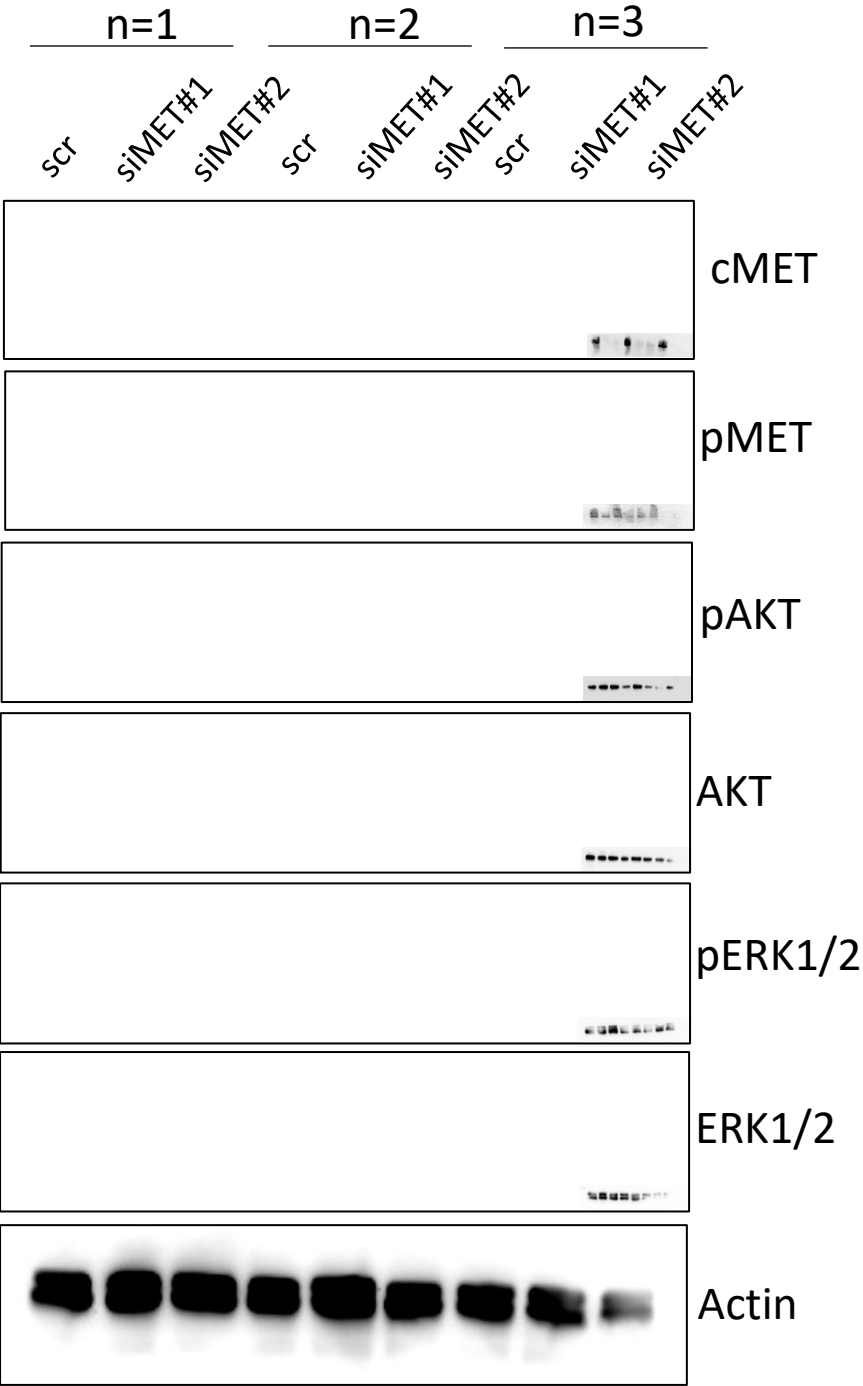


Figure 4.

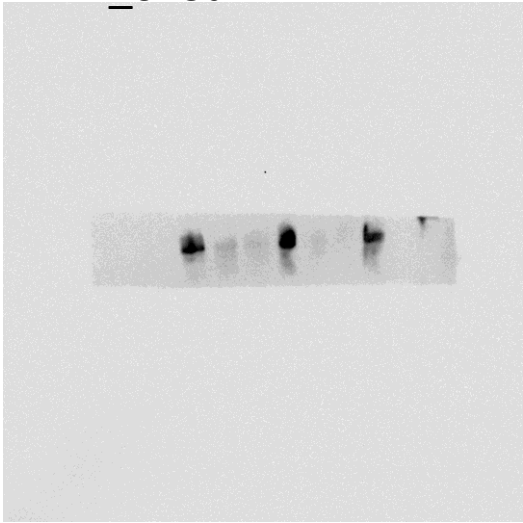
E



Fusion FX\_Vilber\_WB  
2011119\_cMET KD\_Detroit (Lina Lüttich)



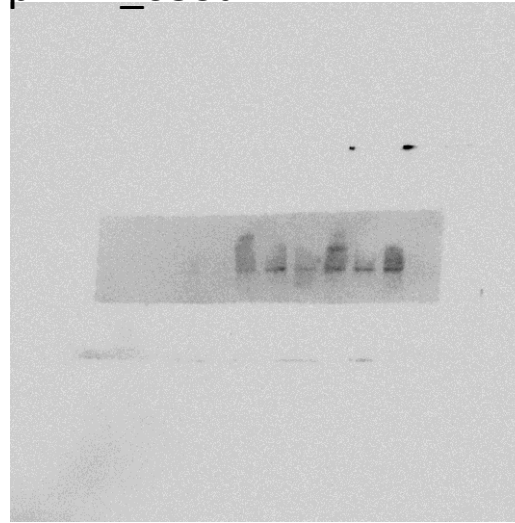
201119\_cMET  
MET\_04Sum



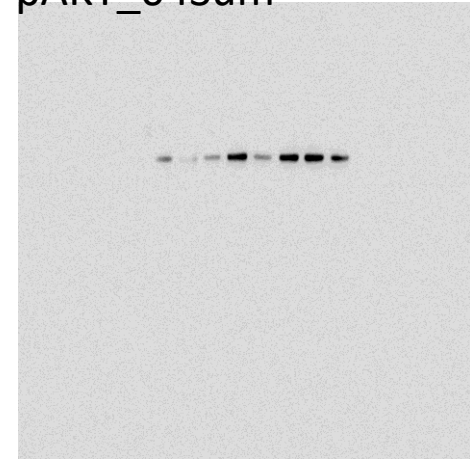
Actin\_8



pMET\_05Sum



pAKT\_04Sum



Marker\_2B



AKT\_05Sum



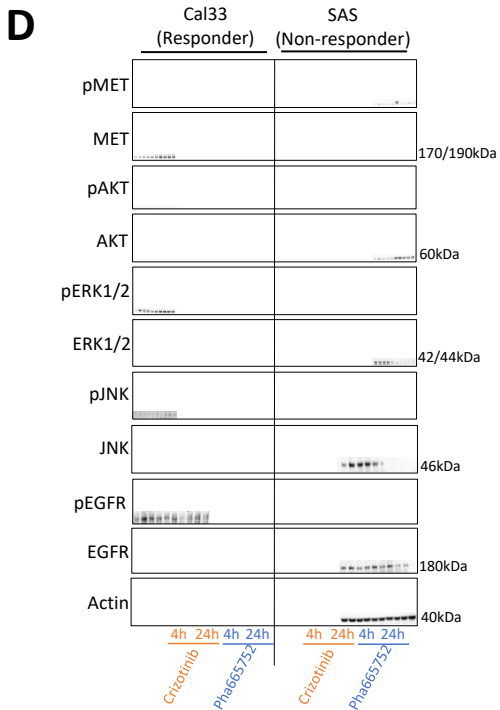
pERK\_05Sum



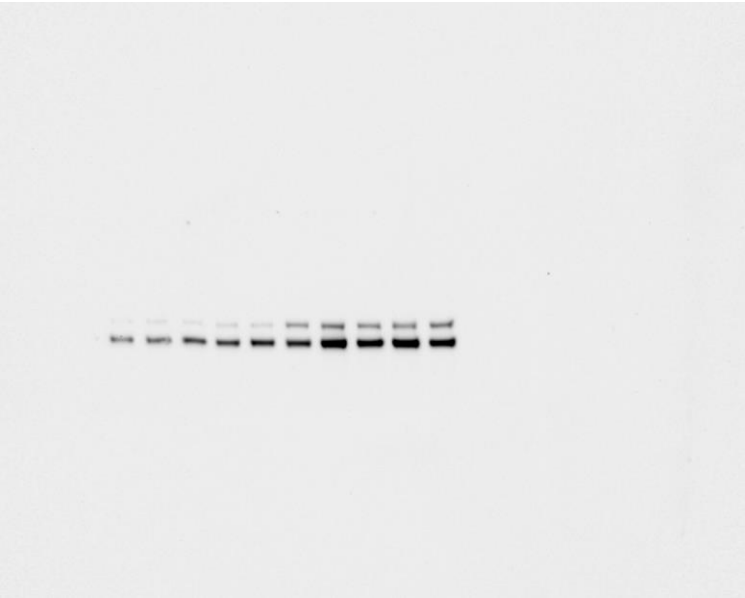
ERK\_03



Figure 5. Raw data: 10\_April19\_Febr20 – Data - WB



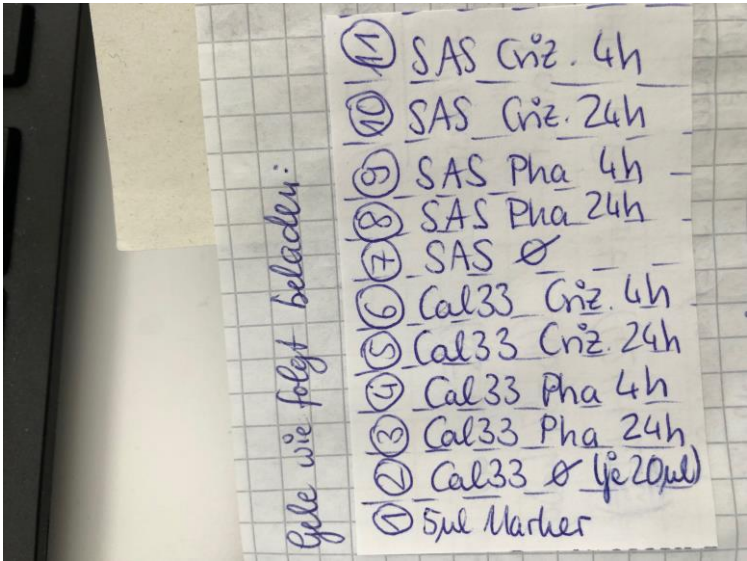
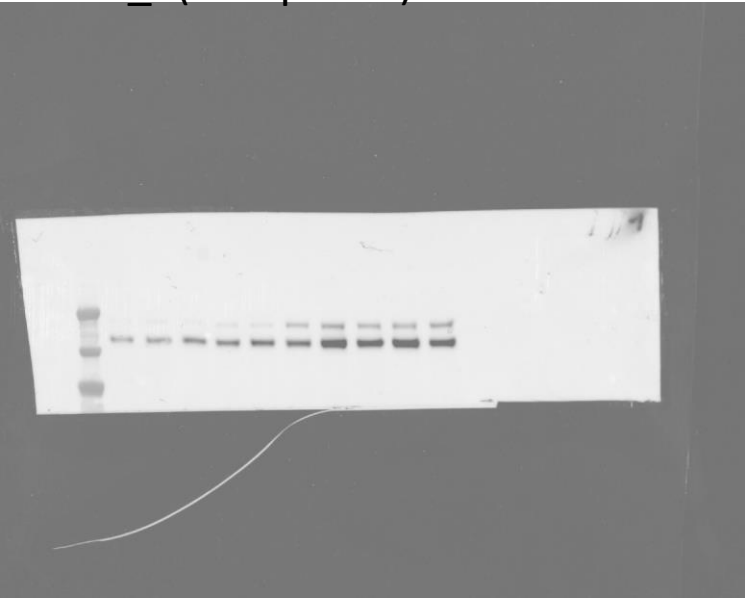
cMET\_5(Chemiluminescence)



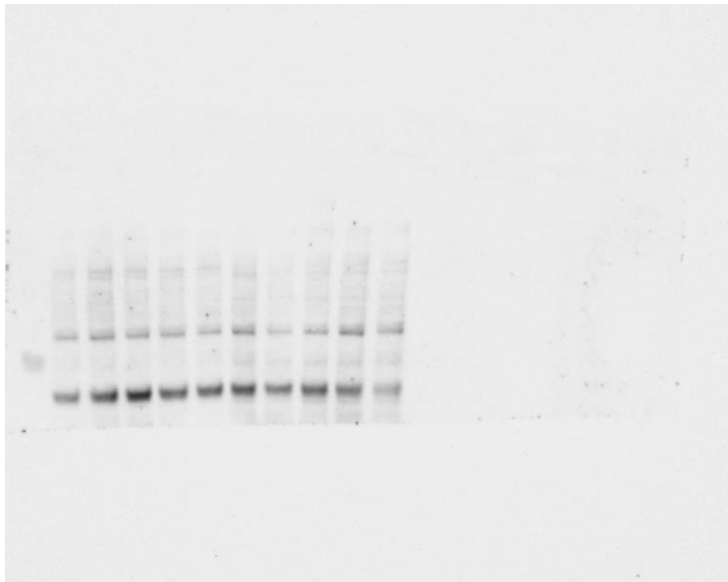
AKT\_6(Chemiluminescence)



cMET\_5(Composite)



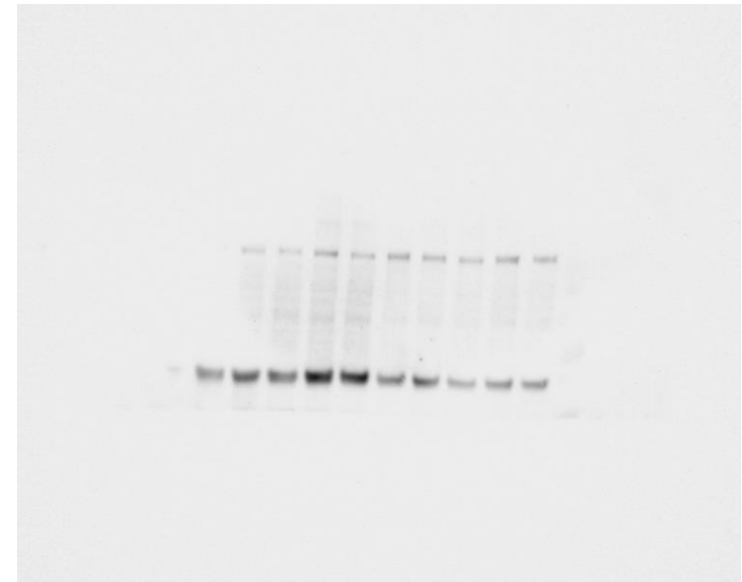
pEGFR Y11735\_8(Chemiluminescence)



AKTIN\_6(Chemiluminescence)



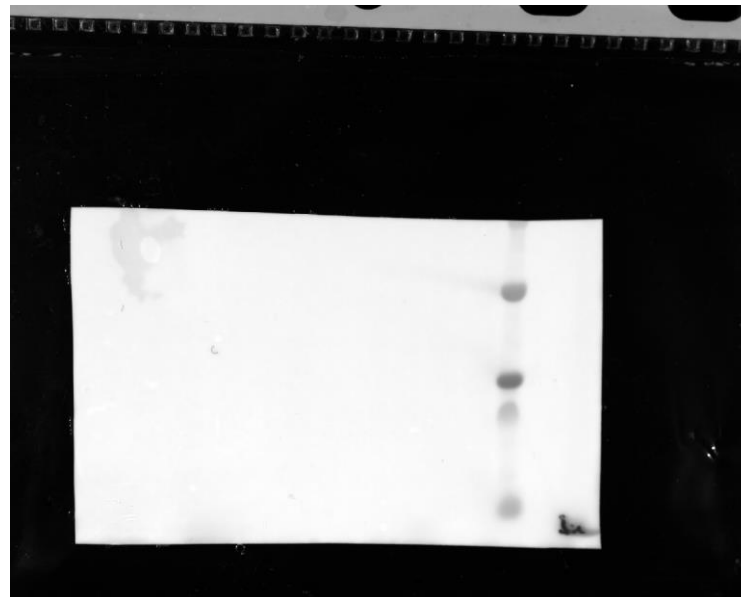
EGFR ab\_5(Chemiluminescence)



ERK\_10(Chemiluminescence)



ERK\_11(Colorimetric)



pMET\_6(Chemiluminescence)

