

Limited predictive or prognostic role of tumor infiltrating tissue-resident memory CD8 T cells in patients with hepatocellular carcinoma receiving immunotherapy

Ying-Chun Shen, Ching-Ping Yeh, Yung-Ming Jeng, Chiun Hsu, Chih-Hung Hsu, Zhong-Zhe Lin, Yu-Yun Shao, Li-Chun Lu, Tsung-Hao Liu, Chien-Hung Chen and Ann-Lii Cheng

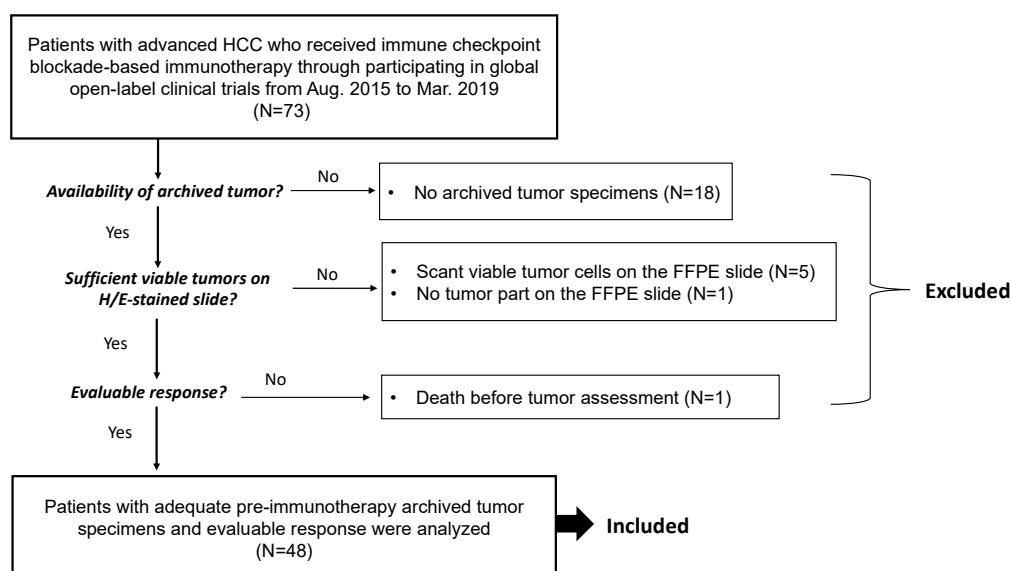
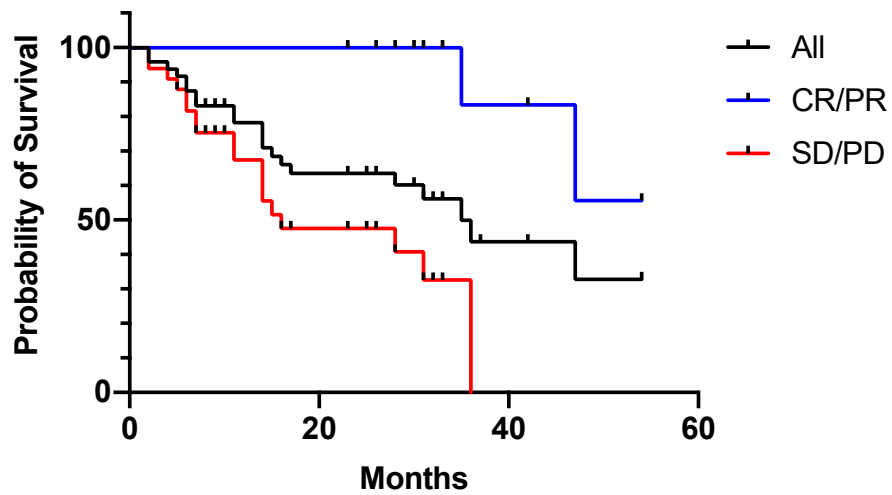


Figure S1: Patient selection flowchart.



	Median OS (months)	HR (95% CI)	P-value
CR/PR	undefined	0.1309	0.0003
SD/PD	16	(0.0543 to 0.3155)	

Figure S2: Overall survival of all patients, responders (CR/PR) and nonresponders (SD/PD). CR, complete response; PR, partial response; SD, stable disease; PD, progressive disease; HR, hazard ratio; *P*-value by Log-rank (Mantel-Cox) test.

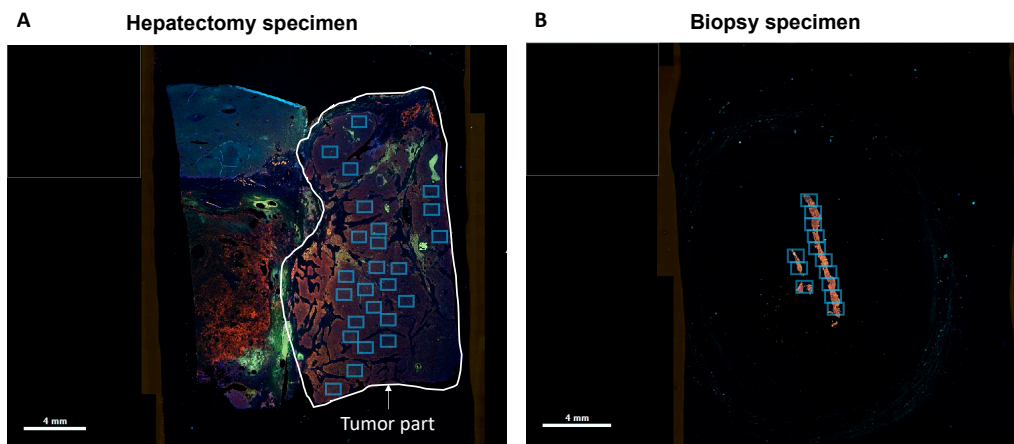


Figure S3: Selection of multispectral regions of interest. Each blue rectangle indicates a region of interest (200 \times magnification field).

Table S1: Clinical trials of immune checkpoint blockade-based immunotherapy for advanced hepatocellular carcinoma during 2015-2019.

Study name	Phase	Treatment group	Registration number
CheckMate 040	I/II	-- Nivolumab -- Ipilimumab -- Nivolumab plus ipilimumab (3 arms)	NCT01658878
D4190C00022	II	-- Durvalumab -- Tremelimumab -- Durvalumab plus tremelimumab (2 regimens) -- Durvalumab plus bevacizumab	NCT02519348
GO30140	Ib	-- Atezolizumab -- Atezolizumab plus bevacizumab	NCT02715531
HIMALAYA	III	-- Durvalumab -- Durvalumab plus tremelimumab (2 regimens) -- Sorafenib	NCT03298451
BGB-A317-208	II	-- Tislelizumab	NCT03419897
MSD/GC207JG	I	-- Atezolizumab plus codrituzumab	JapicCTI-163325

Table S2: Characteristics of archived tumors and their multispectral imaging acquisition.

	All tumors (N=48)	Surgical specimens (N=26)	Biopsy specimens (N=22)
Organ			
Liver	40	21	19
Lung	4	2	2
Lymph node	2	1	1
Bone	1	1	0
Chest wall	1	1	0

Sample age (month)			
Median	7.2	17.2	0.9
Range	0.2-144.4	0.4-144	0.2-60.4
Number of multispectral regions of interest			
Average	18.7	28.4	7.3
SD	17.2	16.5	9.1

SD: standard deviation.