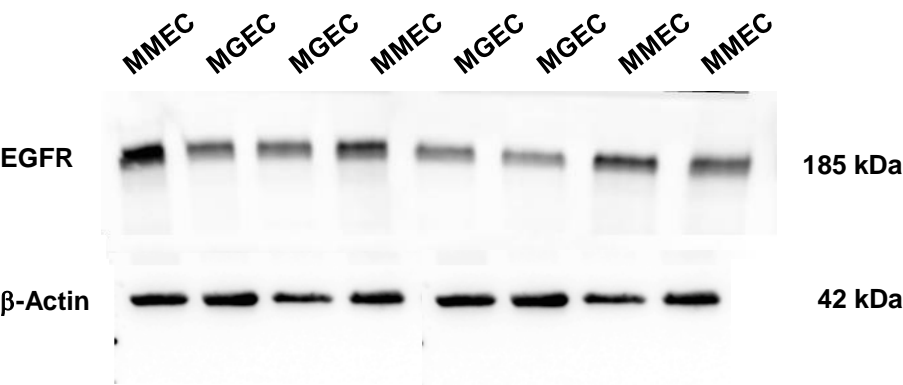
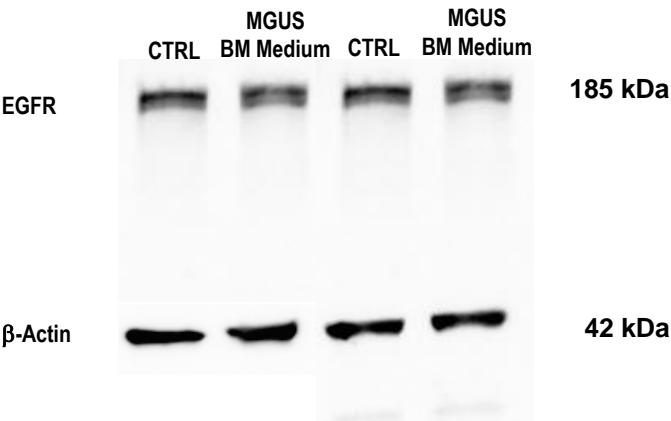


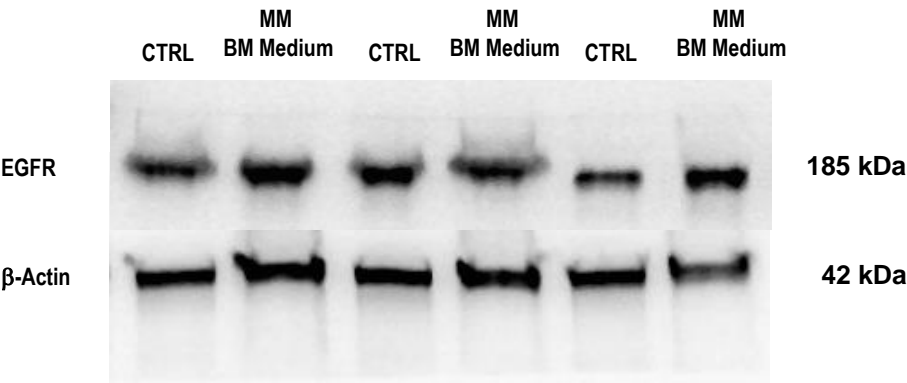
**FIG. 1B**



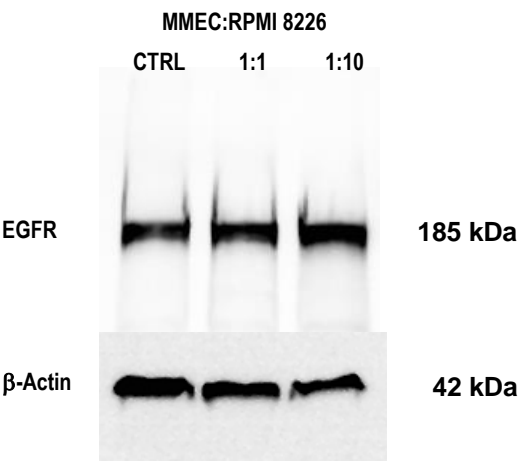
**FIG. 2A**



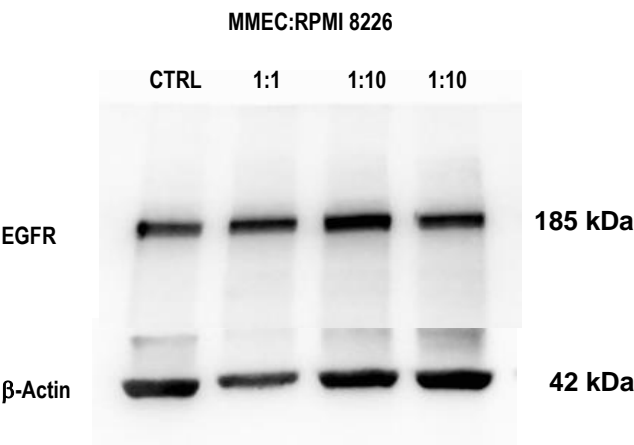
**FIG. 2B**



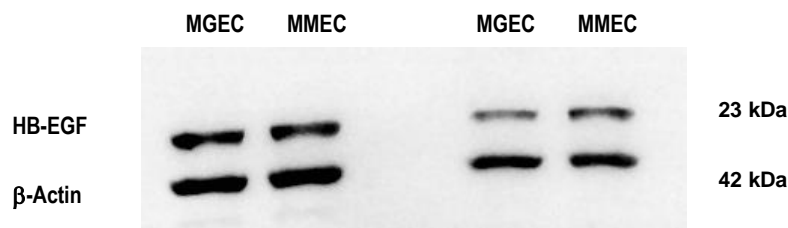
**FIG. 2C**



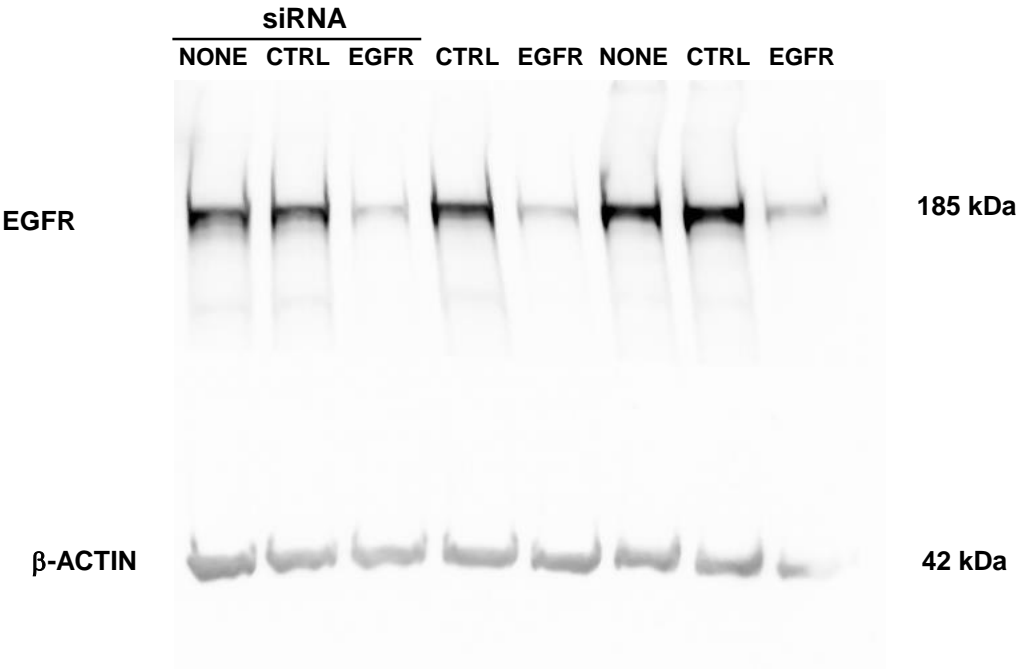
**FIG. 2D**



**FIG. 2E**



**FIG. 5E**



In each western blotting analysis we usually insert pre-stained standard markers with a defined molecular weight. Since these markers are not chemiluminescent and are not visible during detection, we use to make small signs in correspondence to the markers before the immunodetection. Therefore, we have included the molecular weights in the western blots of supplemental materials.