

Supplementary material: Matryoshka-type liposomes offer the improved delivery of temoporfin to tumor spheroids

Ilya Yakavets, Marie Millard, Laureline Lamy, Aurelie Francois, Dietrich Scheglmann, Arno Wiehe, Henri-Pierre Lassalle, Vladimir Zorin, Lina Bezdetnaya

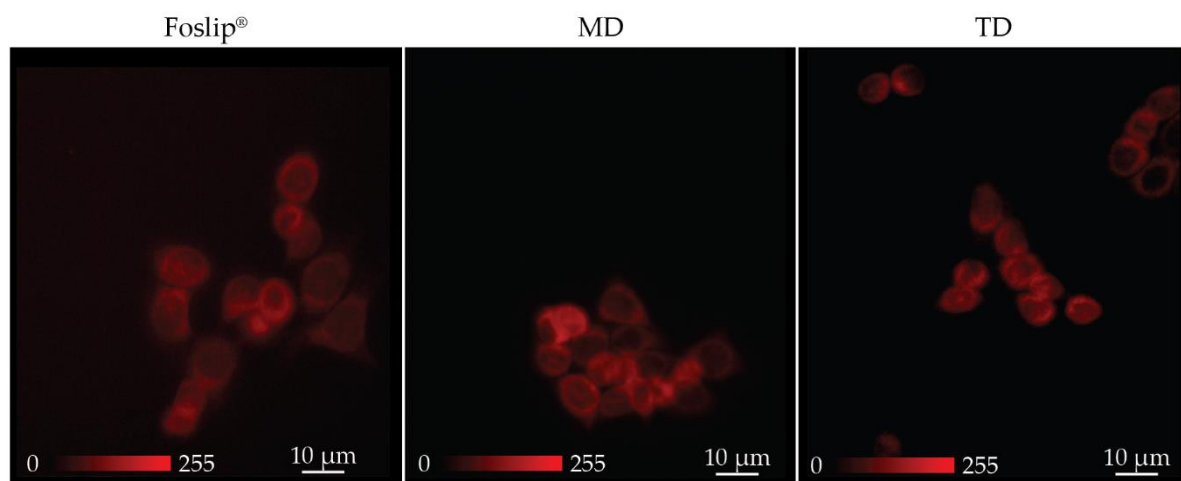


Figure S1. Typical epifluorescence images of mTHPC fluorescence in FaDu monolayer cells at 3h post-incubation with Foslip®, MD and TD. Scale bar: 10 μm . The concentration of mTHPC was 1.5 μM . Serum concentration was 2 %.

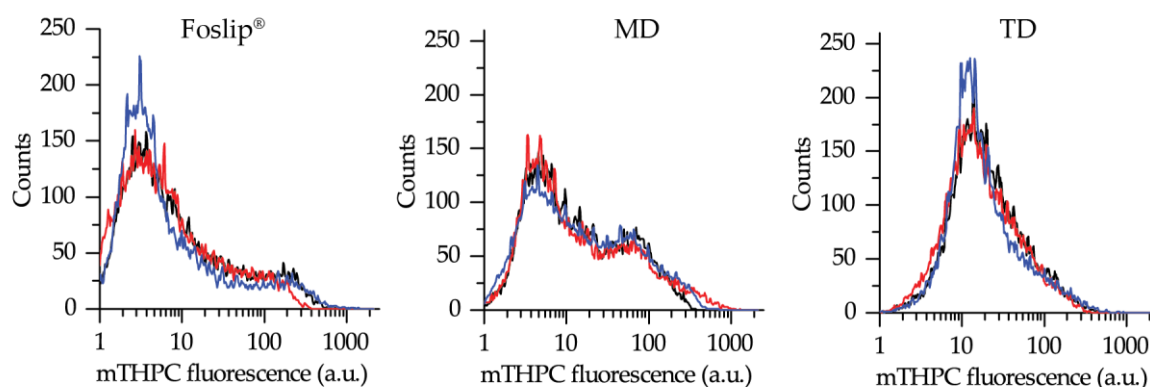


Figure S2. Flow cytometry histograms of HT29 spheroids treated with Foslip®, MD and TD for 24h. Each plot represents 3 independent experiments. mTHPC concentration was 4.5 μM . Serum concentration was 2 %.

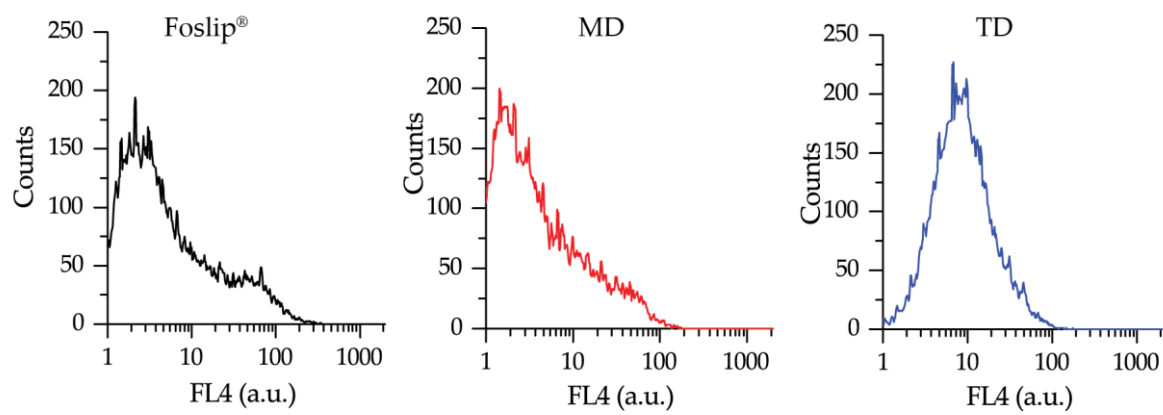


Figure S3. Typical flow cytometry histograms of FaDu spheroids treated with Foslip®, MD and TD for 24h. mTHPC concentration was 4.5 μ M. Serum concentration was 2 %.

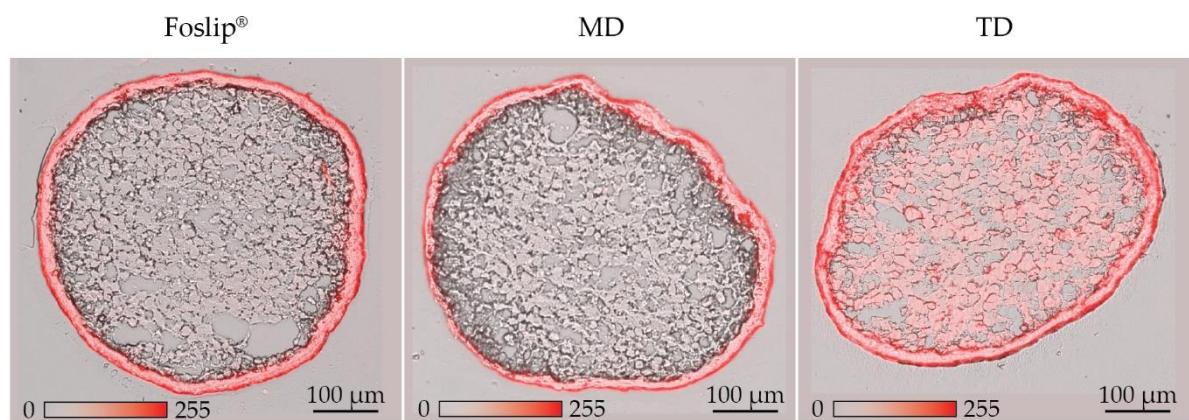


Figure S4. Typical brightfield/fluorescence overlay images of mTHPC in FaDu spheroids cryosections after 24h incubation with various mTHPC formulations (Foslip®, MD and TD). mTHPC concentration was 4.5 μ M. Serum concentration was 2 %. Fluorescence of mTHPC is displayed in red-color.



© 2019 by the authors. Licensee MDPI, Basel, Switzerland. This article is an open access article distributed under the terms and conditions of the Creative Commons Attribution (CC BY) license (<http://creativecommons.org/licenses/by/4.0/>).