

Supplementary Information

**Figure S1.** LC-MS and MS/MS analysis of MC-LR in the different tissues of adult *Lycopersicon esculentum* plants, roots (a); green tomatoes (b); red tomatoes (c) and leaves (d). MC-LR reference fragment ions (#).

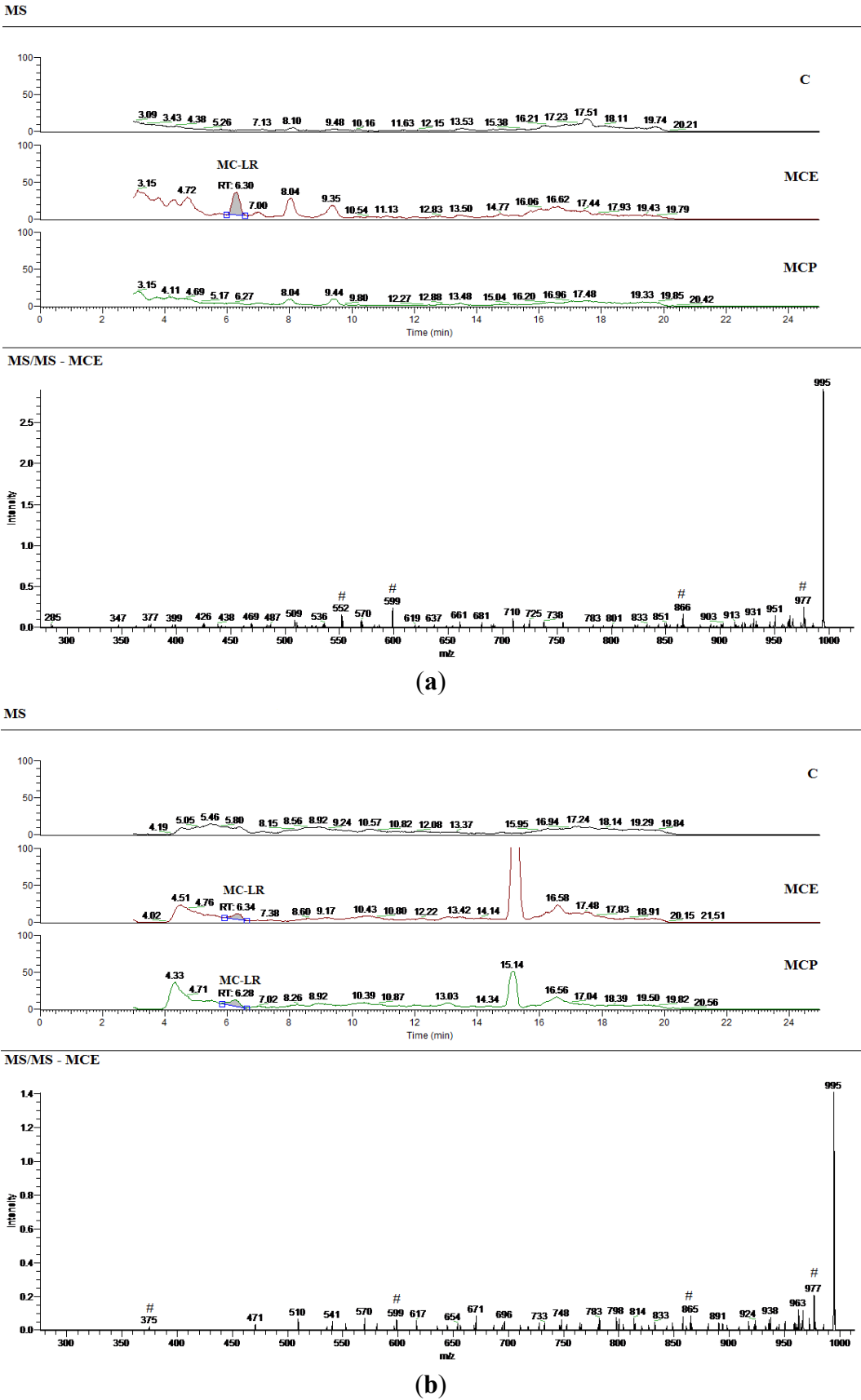
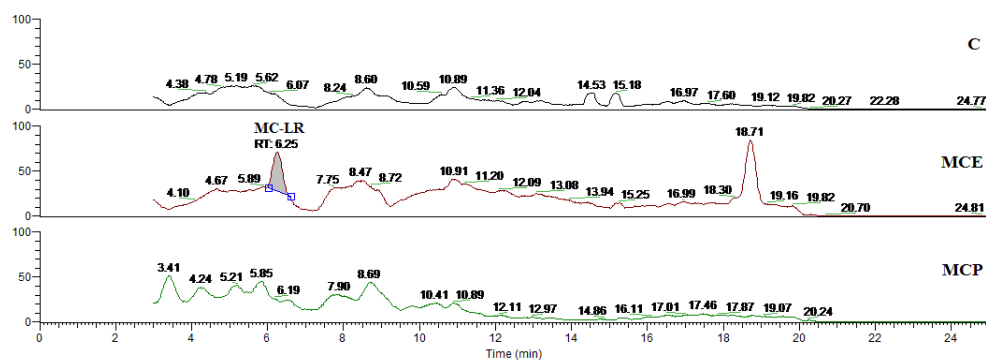
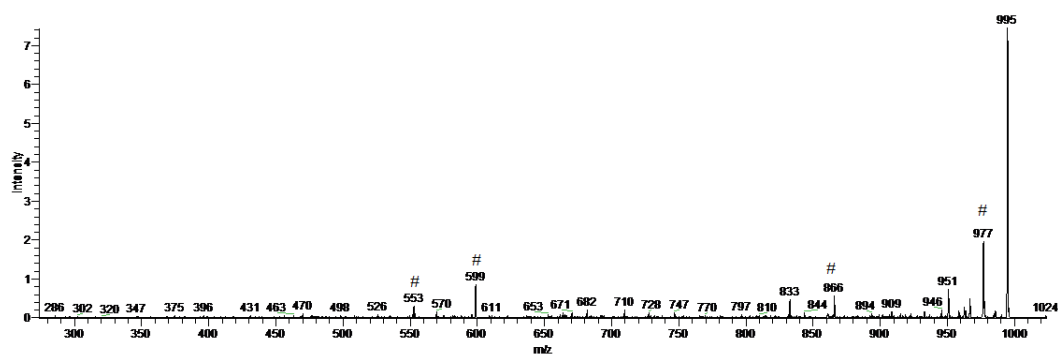


Figure S1. Cont.

MS

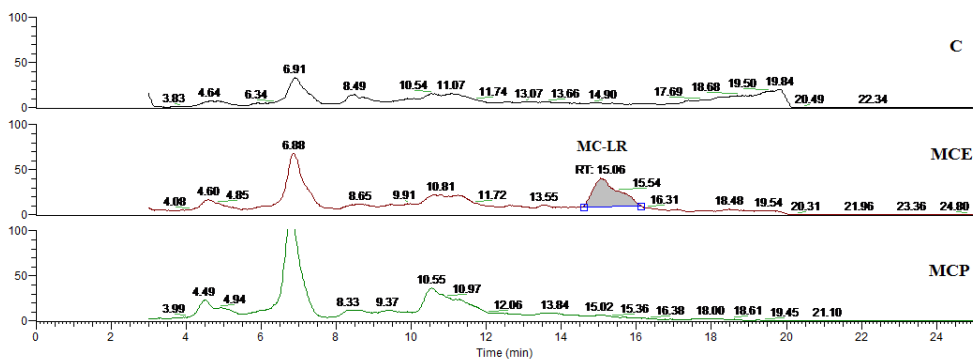


MS/MS - MCE

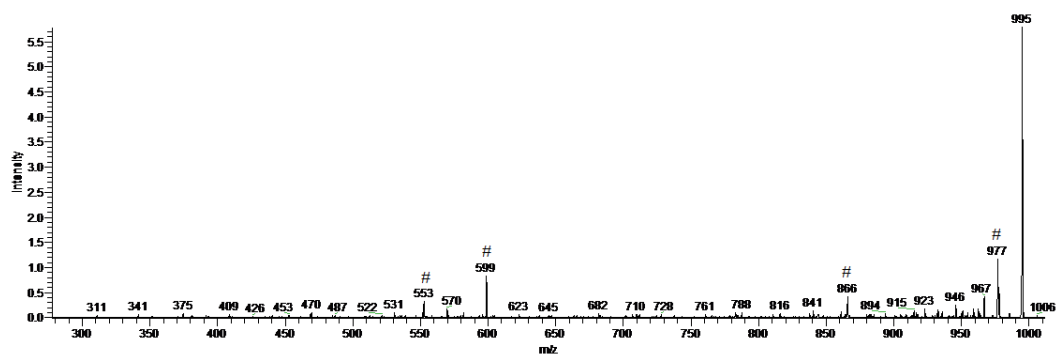


(c)

MS



MS/MS - MCE



(d)