

Supplementary Information

Figure S1. Library construction (A) The fragments ~700 bp containing VHH gene were amplified by first PCR; (B) The fragments ~400 bp were amplified by second PCR extension; (C) 24 colonies were randomly selected from constructed library to estimate the correct insertion rate by performing PCR.

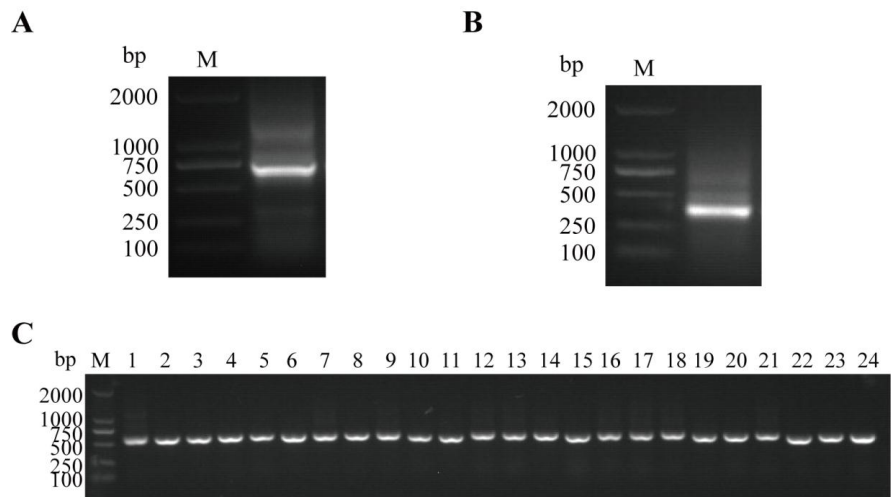


Figure S2. The VHH genes against Cry 1Ac were selected from phage display library. (A) Cry1Ac protein detected by SDS-PAGE; (B) After two rounds of panning, Cry1Ac-specific VHHs were enriched 200 folds; (C) 95 colonies were randomly selected from two rounds of panning by Periplasmic extract ELISA to detect the positive colonies. The ratio higher than 2 was considered as positive.

