

Supplementary Information

Figure S1. HeLa cells were treated with the indicated concentrations of TcdB for 4 h. The cytopathic effect was quantified as the number of rounded per total cells. Cell rounding was reflected by a reduced length of the longitudinal cell axis.

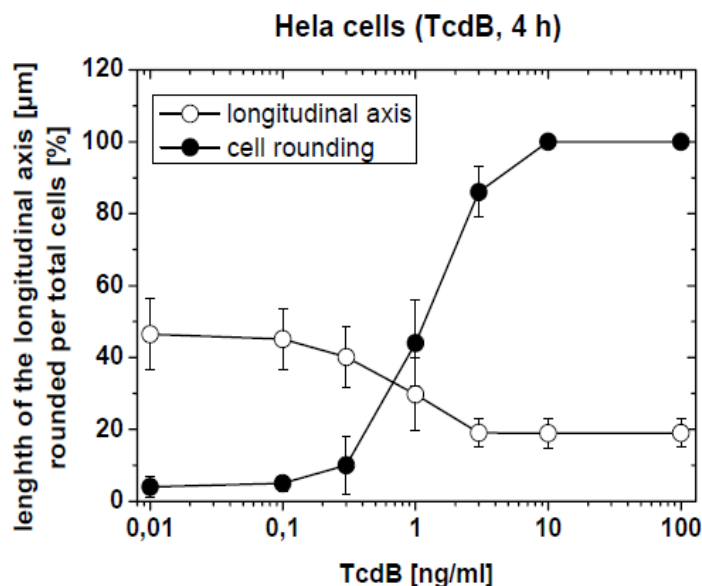


Figure S2. HEp-G2 cells were treated with the indicated concentrations of TcdB for 4 h. the cytopathic effect was quantified as the number of rounded per total cells. The F-actin concentration was measured by the rhodamine-phalloidin assay. The cellular level of F-actin in non-treated cells was set 100. Values are the mean \pm SD from three independent experiments made in triplicates.

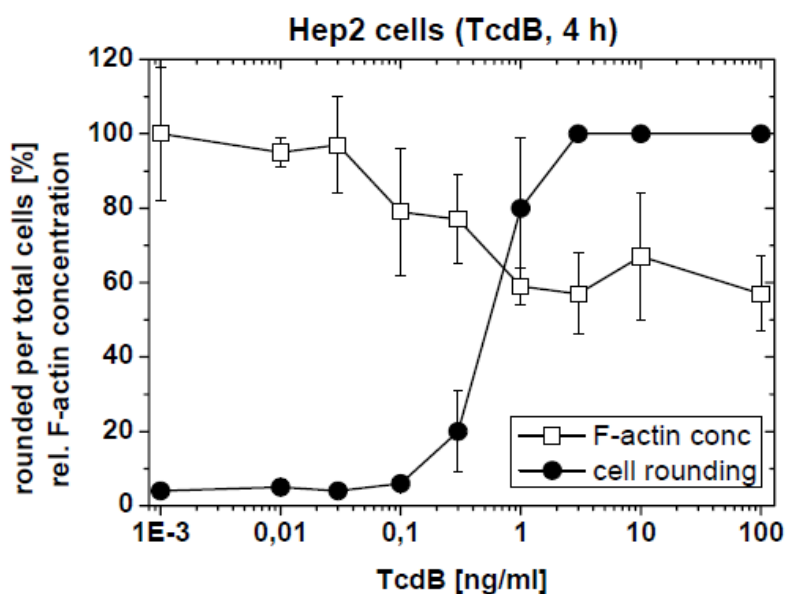


Figure S3. Rat basophilic leukemia (RBL) cells were treated with the indicated concentrations of TcdB for 4 h. The cytopathic effect was quantified as the number of rounded per total cells. The F-actin concentration was measured by the rhodamine-phalloidin assay. The cellular level of F-actin in non-treated cells was set 100. Values are the mean \pm SD from three independent experiments made in triplicates.

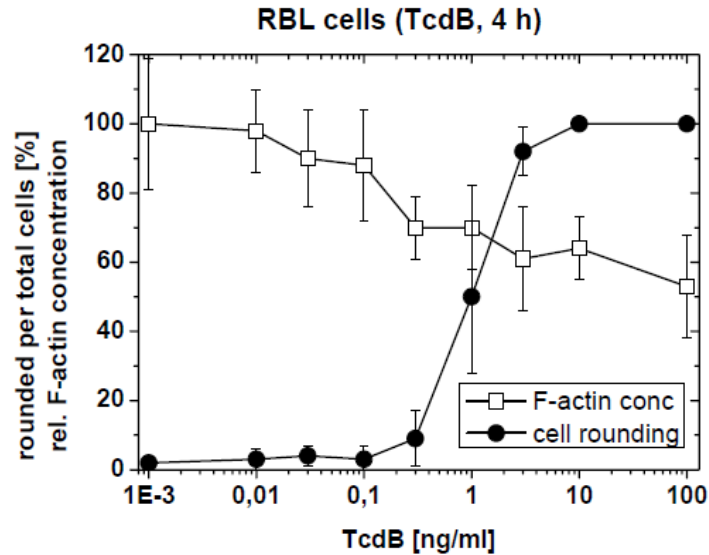


Figure S4. HeLa cells were treated with the indicated toxins for 4 h. Cells were lysed in F-actin stabilization buffer, followed by centrifugation to separate the F-actin (particular fraction P) from the G-actin pool (soluble fraction S). Actin signals were densitometrically quantified and given as the ratio of F-actin per G-actin. Values are the mean \pm SD from three independent experiments.

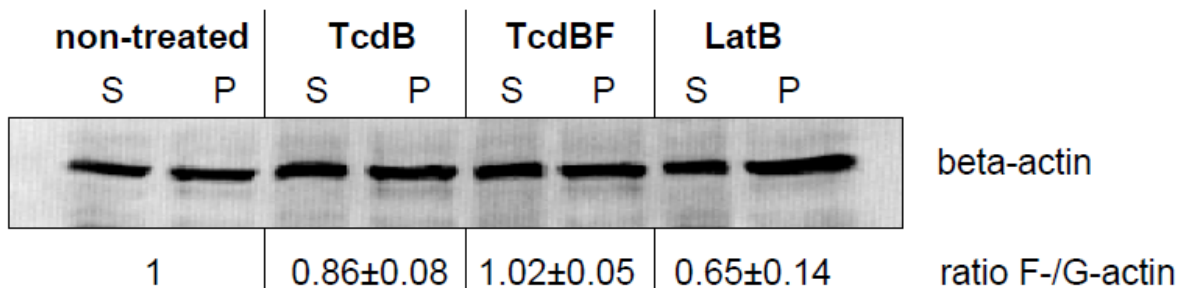
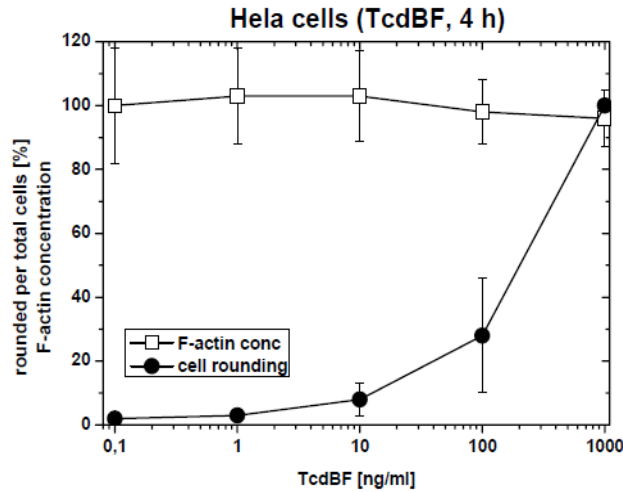


Figure S5. HeLa cells were treated with the indicated concentrations of TcdBF for 4 h. The cytopathic effect was quantified as the number of rounded per total cells. The F-actin concentration was measured by the rhodamine-phalloidin assay. The level of F-actin in non-treated cells was set 100. Values are the mean \pm SD from three independent experiments made in triplicates.



© 2013 by the authors; licensee MDPI, Basel, Switzerland. This article is an open access article distributed under the terms and conditions of the Creative Commons Attribution license (<http://creativecommons.org/licenses/by/3.0/>).